

**DURABLE 4 INCH WHITE LINE, TYPE A TAPE AND TEMPORARY 4 INCH WHITE LINE, PAINT**  
 (ALL LINES WILL INCLUDE EDGE LINE BREAKS AND RADIUS FOR TOWN HIGHWAYS)  
 SPRINGFIELD:  
 STA S 186+27.84 - STA S 191+50.00 EDGE LINE LT & RT  
 STA S 187+70.40 EDGE LINES RT, TH-340  
 STA S 187+70.40 SOLID LANE LINE RT, TH-340  
 STA S 188+00.00 - STA S 190+50.00 SOLID LANE LINE LT  
 STA S 190+50.00 - STA S 191+50.00 DOTTED LANE LINE LT

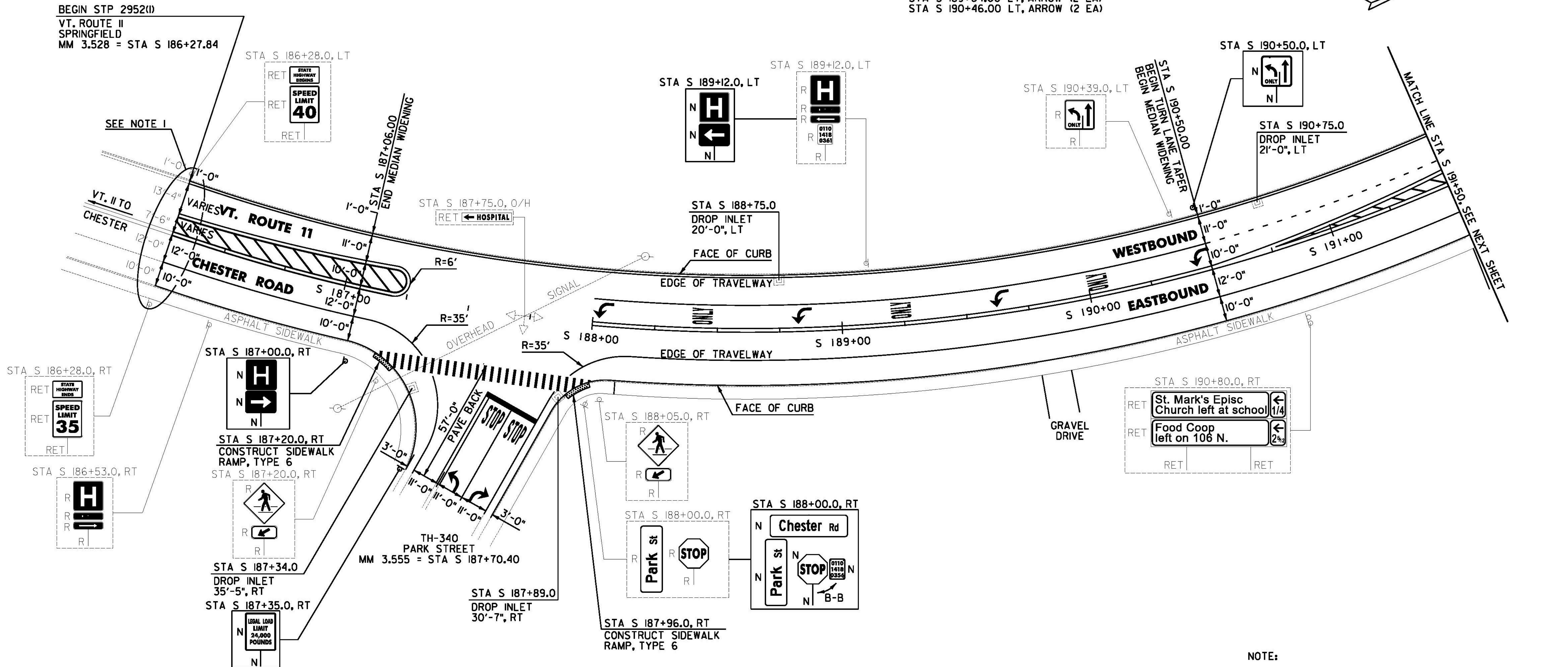
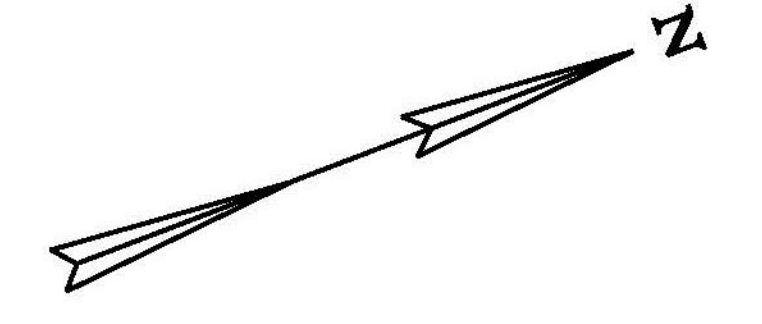
**DURABLE 4 INCH YELLOW LINE, TYPE A TAPE AND TEMPORARY 4 INCH YELLOW LINE, PAINT**  
 (ALL LINES WILL INCLUDE C/L LINE BREAKS FOR TOWN HIGHWAYS)  
 S = SOLID, D = DASHED  
 SPRINGFIELD:  
 STA S 188+00.00 - STA S 190+50.00 LT & RT  
 STA S 186+27.84 - STA S 187+25.00 DOUBLE SOLID MEDIAN LT/CL  
 STA S 190+50.00 - STA S 191+50.00 DOUBLE SOLID MEDIAN LT/CL  
 STA S 187+70.40 DOUBLE SOLID RT, TH-340

**DURABLE LETTER OR SYMBOL, TYPE D TAPE**  
 SPRINGFIELD:  
 STA S 187+70.40 RT, TH-340 "S,T,O,P" (4 EA)  
 STA S 187+70.40 RT, TH-340 "S,T,O,P" (4 EA)  
 STA S 187+70.40 RT, TH-340 ARROW (1 EA)  
 STA S 187+70.40 RT, TH-340 ARROW (1 EA)  
 STA S 188+04.00 LT, ARROW (1 EA)  
 STA S 188+44.00 LT, "O,N,L,Y" (4 EA)  
 STA S 188+84.00 LT, ARROW (1 EA)  
 STA S 189+24.00 LT, "O,N,L,Y" (4 EA)  
 STA S 189+64.00 LT, ARROW (1 EA)  
 STA S 190+04.00 LT, "O,N,L,Y" (4 EA)  
 STA S 190+46.00 LT, ARROW (1 EA)

**DURABLE 8 INCH YELLOW LINE, TYPE A TAPE**  
 SPRINGFIELD:  
 STA S 186+27.84 - STA S 187+25.00 HATCHED MEDIAN LT  
 STA S 190+50.00 - STA S 191+50.00 HATCHED MEDIAN LT  
**DURABLE 24 INCH STOP BAR, TYPE A TAPE AND TEMPORARY 24 INCH STOP BAR, PAINT**  
 SPRINGFIELD:  
 STA S 187+70.40 RT, TH-340  
**DURABLE CROSSWALK MARKING, TYPE A TAPE AND TEMPORARY CROSSWALK MARKING, PAINT**  
 SPRINGFIELD:  
 STA S 187+70.40 RT, TH-340

**TEMPORARY LETTER OR SYMBOL, PAINT**  
 SPRINGFIELD:  
 STA S 187+70.40 RT, TH-340 "S,T,O,P" (8 EA)  
 STA S 187+70.40 RT, TH-340 "S,T,O,P" (8 EA)  
 STA S 187+70.40 RT, TH-340 ARROW (2 EA)  
 STA S 187+70.40 RT, TH-340 ARROW (2 EA)  
 STA S 188+04.00 LT, ARROW (2 EA)  
 STA S 188+84.00 LT, ARROW (2 EA)  
 STA S 189+64.00 LT, ARROW (2 EA)  
 STA S 190+46.00 LT, ARROW (2 EA)

**REMOVING SIGNS**  
 AS SHOWN - 14



BEGIN STP 2952(1)  
 VT. ROUTE 11  
 SPRINGFIELD  
 MM 3.528 = STA S 186+27.84

**REHAB. DROP INLETS, CATCH BASINS, OR MANHOLES, CLASS I, II, OR III**  
 SPRINGFIELD:  
 STA S 187+34.0 RT  
 STA S 187+89.0 RT  
 STA S 188+75.0 LT  
 STA S 190+75.0 LT

**PORTLAND CEMENT CONCRETE SIDEWALK, 5 INCH**  
 SPRINGFIELD:  
 STA S 187+20.0 RT  
 STA S 187+96.0 RT  
**DETECTABLE WARNING SURFACE**  
 SPRINGFIELD:  
 STA S 187+20.0 RT  
 STA S 187+96.0 RT

**SIGN LEGEND**  
 R = REMOVE  
 S = SALVAGE  
 N = NEW  
 RET = RETAIN  
 B-B = BACK TO BACK  
 EXISTING = \_\_\_\_\_  
 NEW = \_\_\_\_\_  
 R = RETURN TO TOWN OF SPRINGFIELD

**NOTE:**  
 I. SEE SHEET 17 FOR SPRINGFIELD VT. ROUTE 11 EASTBOUND APPROACH STRIPING DETAILS.

<b>SPRINGFIELD PROJECT LAYOUT SHEET #1</b>	PROJECT NAME: CHESTER-SPRINGFIELD-ROCKINGHAM-WINDSOR	PLOT DATE: 3/27/2015
	PROJECT NUMBER: STP 2952(1)	DRAWN BY: A. KIRBY
	FILE NAME: z13c518bdr_seg02.dgn	CHECKED BY: J. SHIELDS
	DESIGNED BY: A. HAWKINS	SHEET 108 OF 309