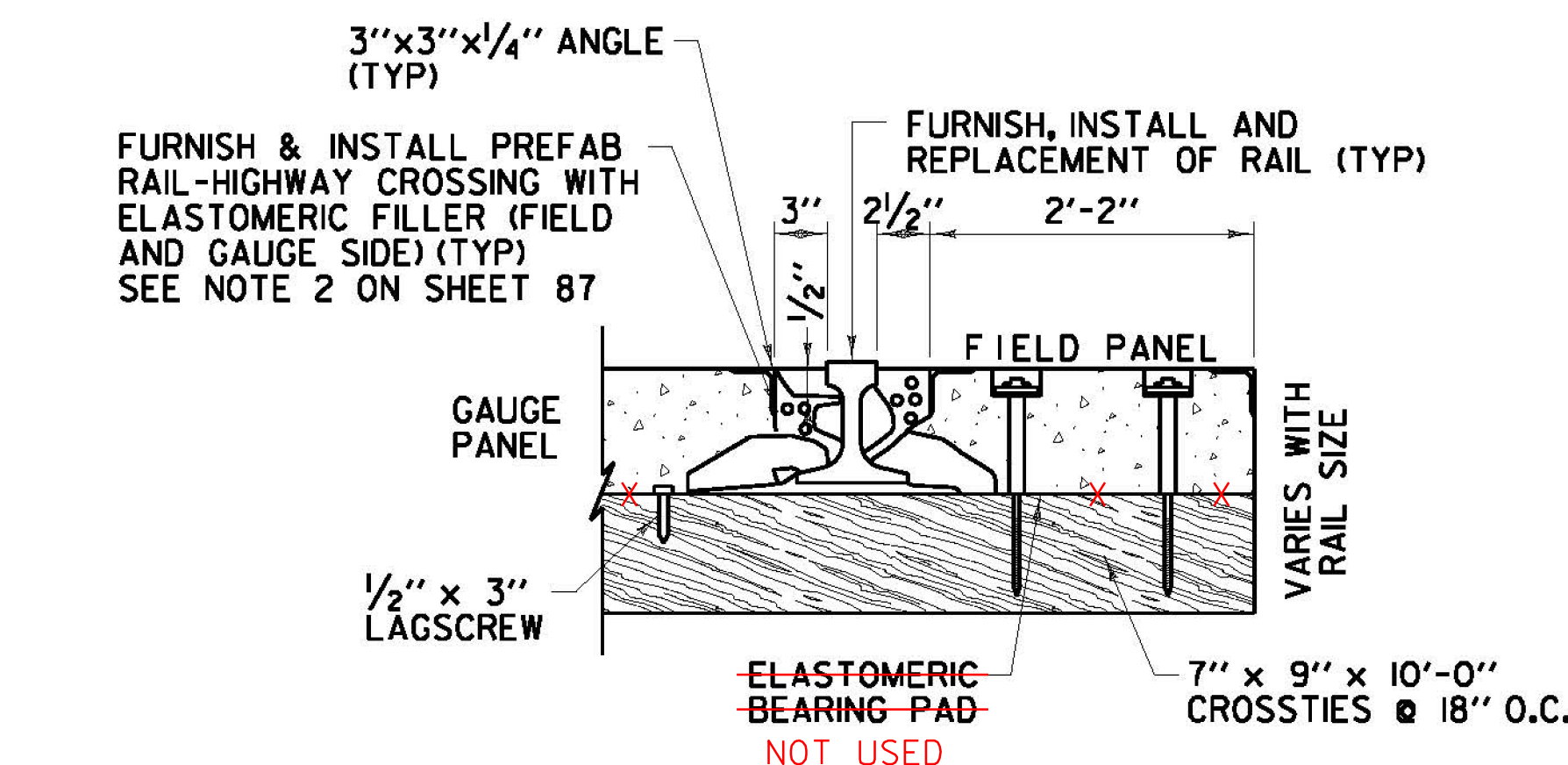


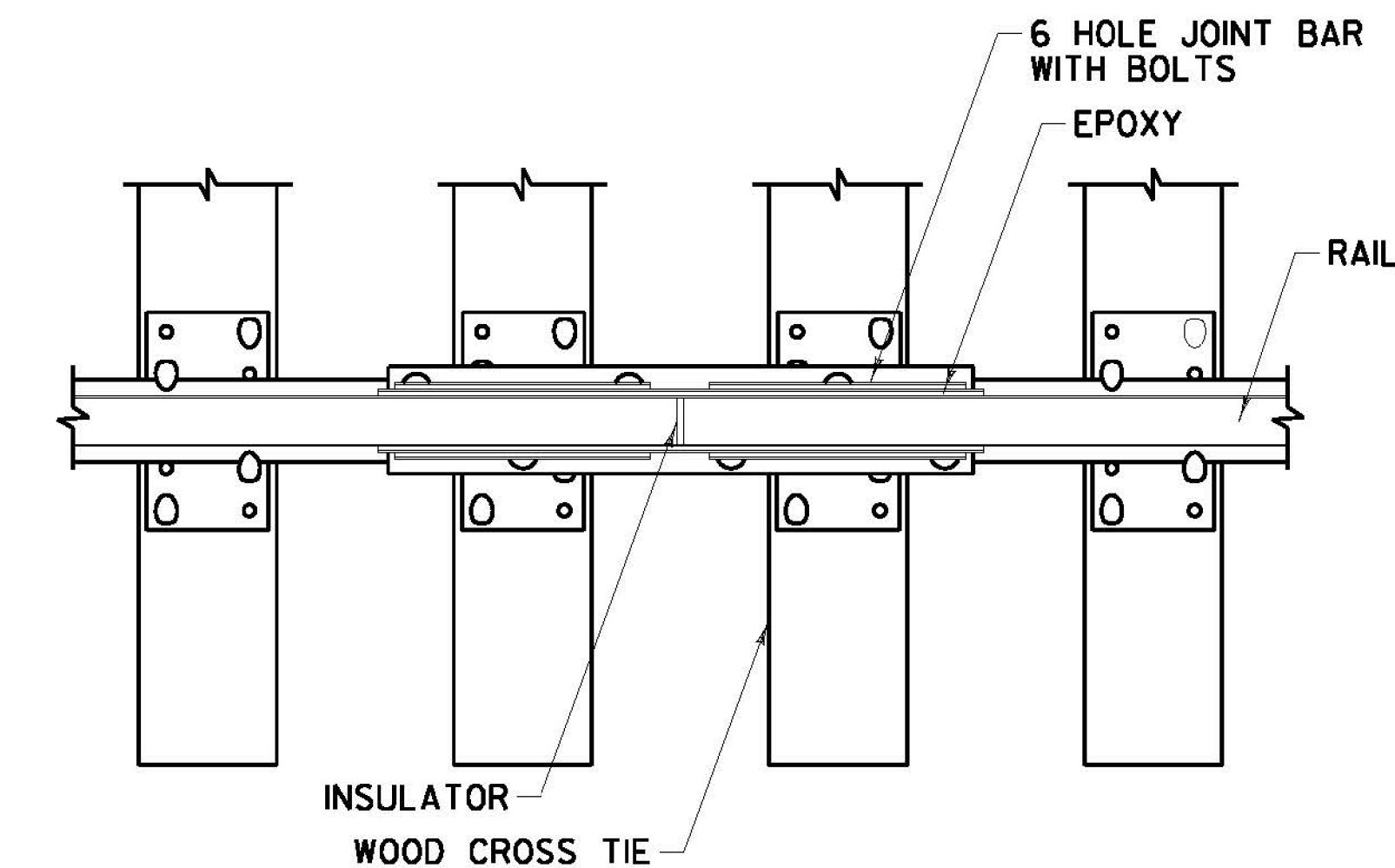
**PAVEMENT ASPHALT TRANSITION FOR CONCRETE GRADE CROSSING PANELS**

NOTE:

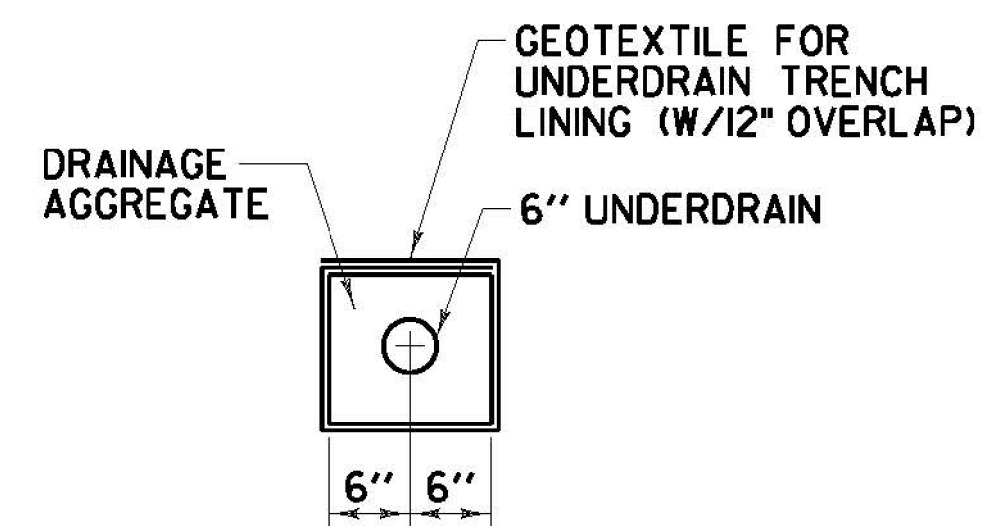
1. CONTRACTOR SHALL COLD PLANE A MINIMUM OF 2" DEEP x 24" WIDE ADJACENT TO THE CONCRETE GRADE CROSSING PANELS AND FILL WITH ASPHALTIC PLUG JOINT MATERIAL AS DIRECTED BY THE ENGINEER. PAYMENT WILL BE MADE UNDER ITEM 900.640 SPECIAL PROVISION (BAND JOINT & PRECAST CONCRETE RAILROAD CROSSING)



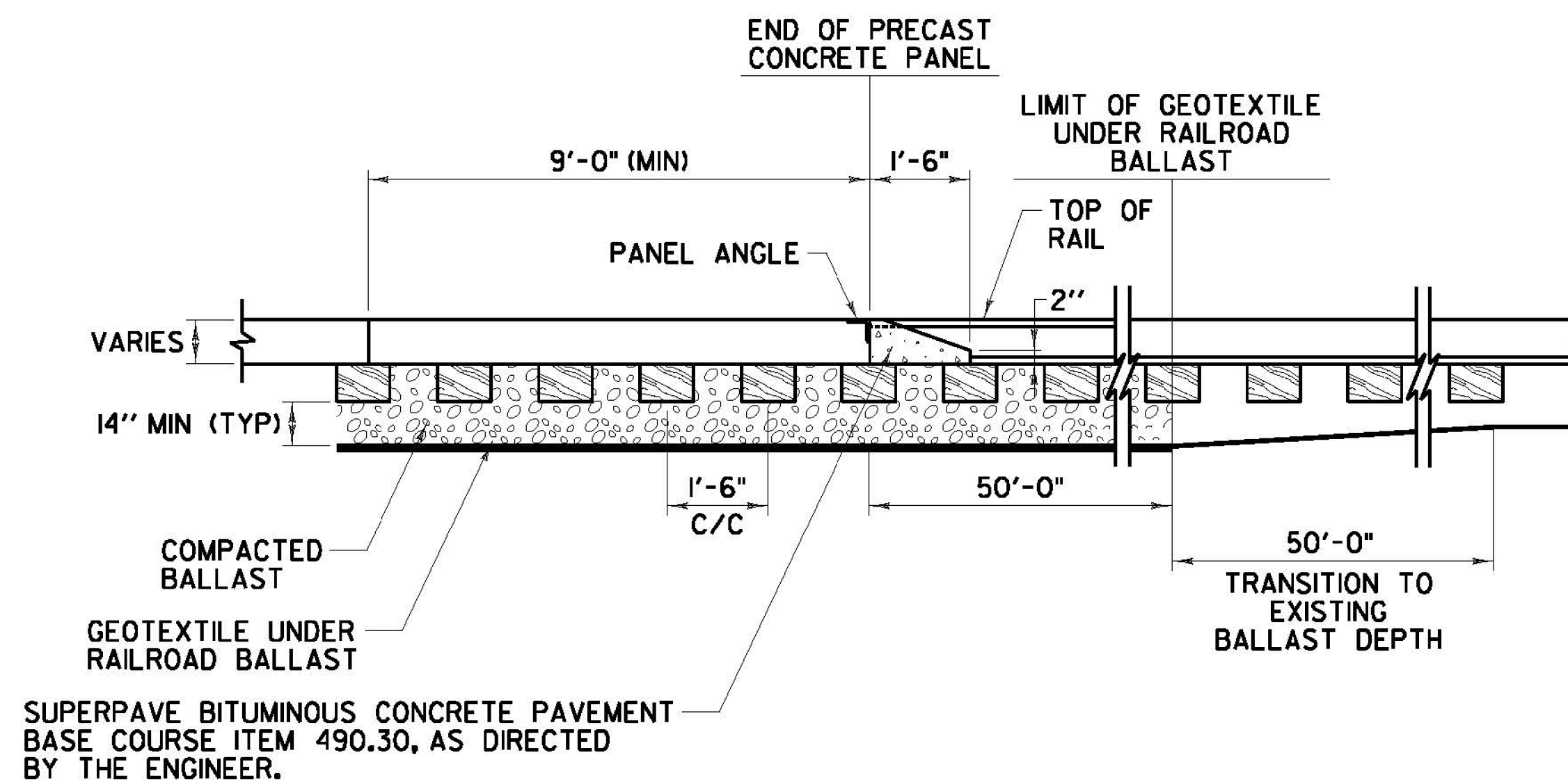
**ENLARGED SECTION AT RAIL SEAL**



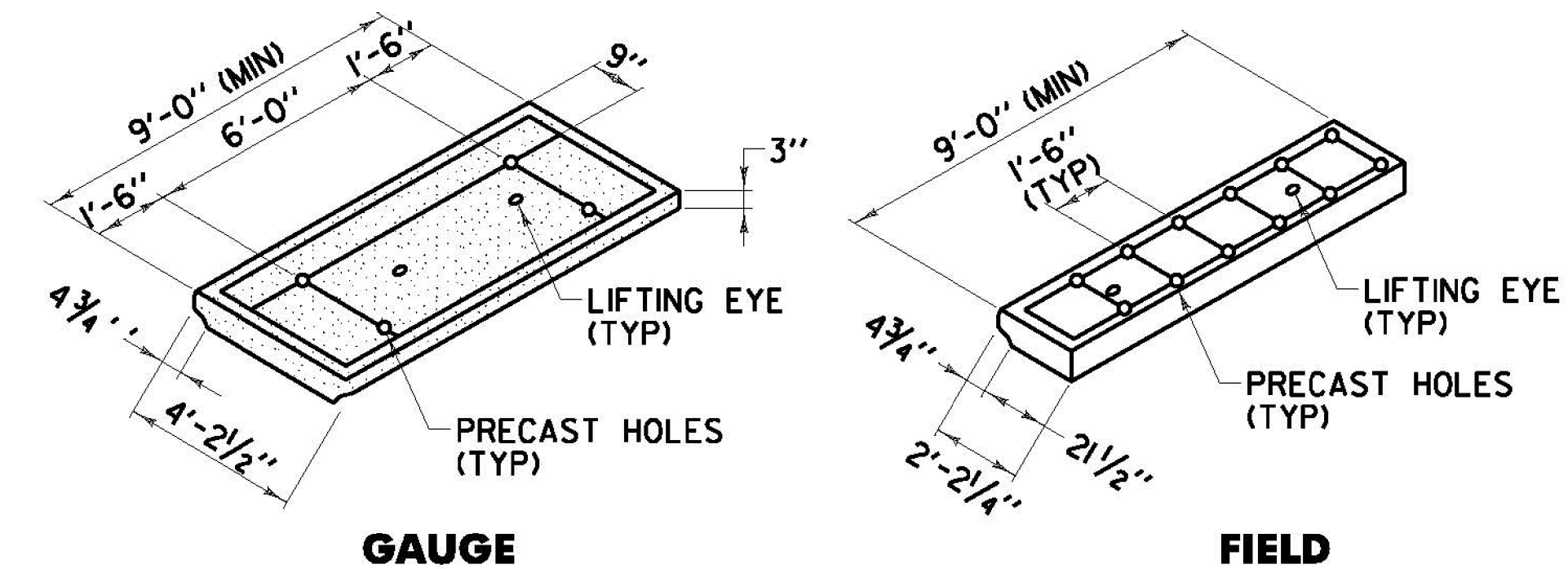
**BONDED INSULATED JOINT DETAIL (SUSPENDED JOINT)**



**CROSS SECTION UNDERDRAIN WITH GEOTEXTILE**  
(SEE NOTE 16 ON SHEET 87)



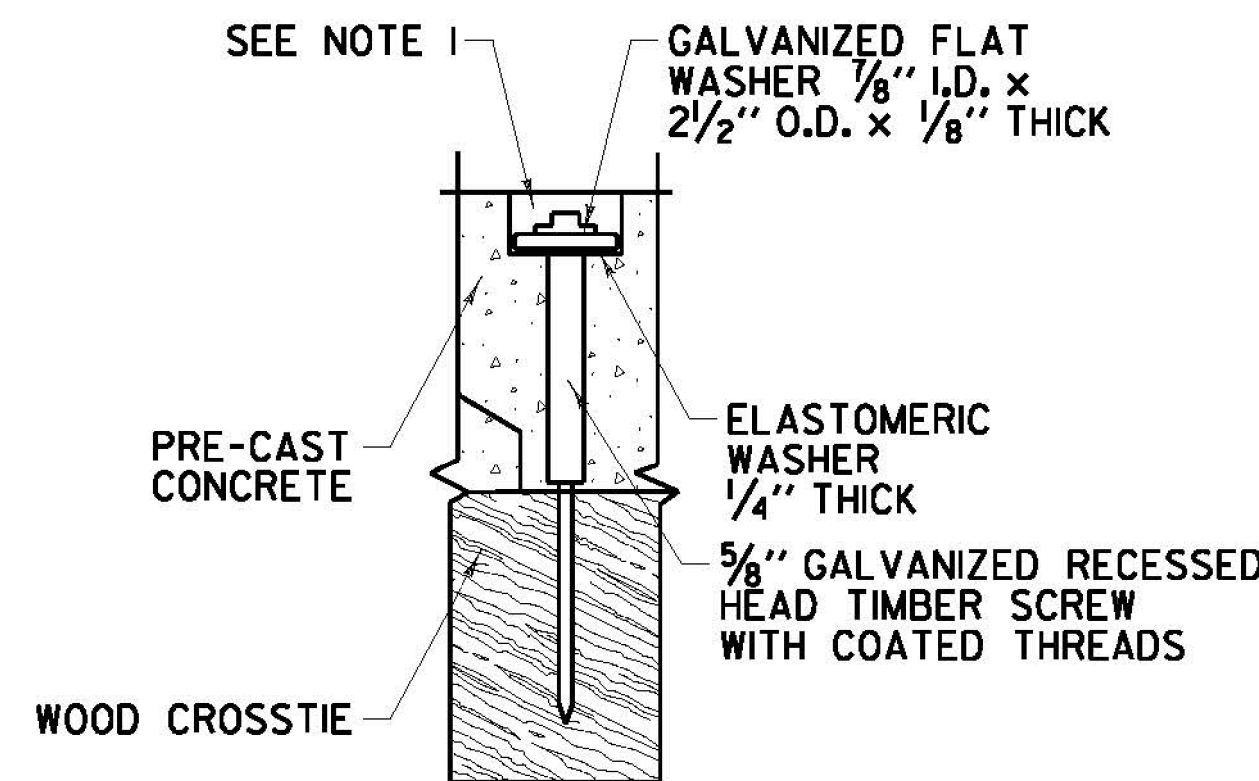
**SECTION VIEW**



**ISOMETRIC VIEWS**

**GAUGE AND FIELD PANEL DETAILS**

MINIMUM PANEL LENGTH	9'-0"
GAUGE PANEL WIDTH	4'-2 1/2"
FIELD PANEL WIDTH	2'-2 1/4"
HEIGHT DETERMINED BY RAIL SIZE	6" TO 8 1/2"
DIMENSION TOLERANCE	± 1/4"
CROSSTIE CENTERS REQUIRED	1'-6"
CROSSTIE LENGTH REQUIRED	10'-0"
CONCRETE	6000 PSI, 28 DAYS MIN.
REINFORCEMENT REBAR	AMERICAN GRADE 72
LIFTING EYES	4000 LBS. CAPACITY EACH
MEETS HS20-44 LOADING SPECS.	



**SCREW DETAIL**

NOTE:

1. CONTRACTOR SHALL FILL TO THE TOP OF CONCRETE PANEL WITH APPROVED POLYURETHANE SEALANT AS DIRECTED BY THE ENGINEER; PAYMENT SHALL BE INCIDENTAL TO THE APPROPRIATE ITEM 900.645 SPECIAL PROVISION (PRECAST CONCRETE PANEL GRADE CROSSING SURFACE).

NOT TO SCALE

**RAIL  
DETAILS  
SHEET**

PROJECT NAME: CHESTER-SPRINGFIELD-ROCKINGHAM-WINDSOR

PROJECT NUMBER: STP 2952(1)

FILE NAME: z13c518rrd1.dgn

PROJECT LEADER: D. GOZALKOWSKI

DESIGNED BY: M. MOKEY

PLOT DATE: 3/27/2015

DRAWN BY: A. KIRBY

CHECKED BY: D. EMERICH

SHEET 93 OF 309