

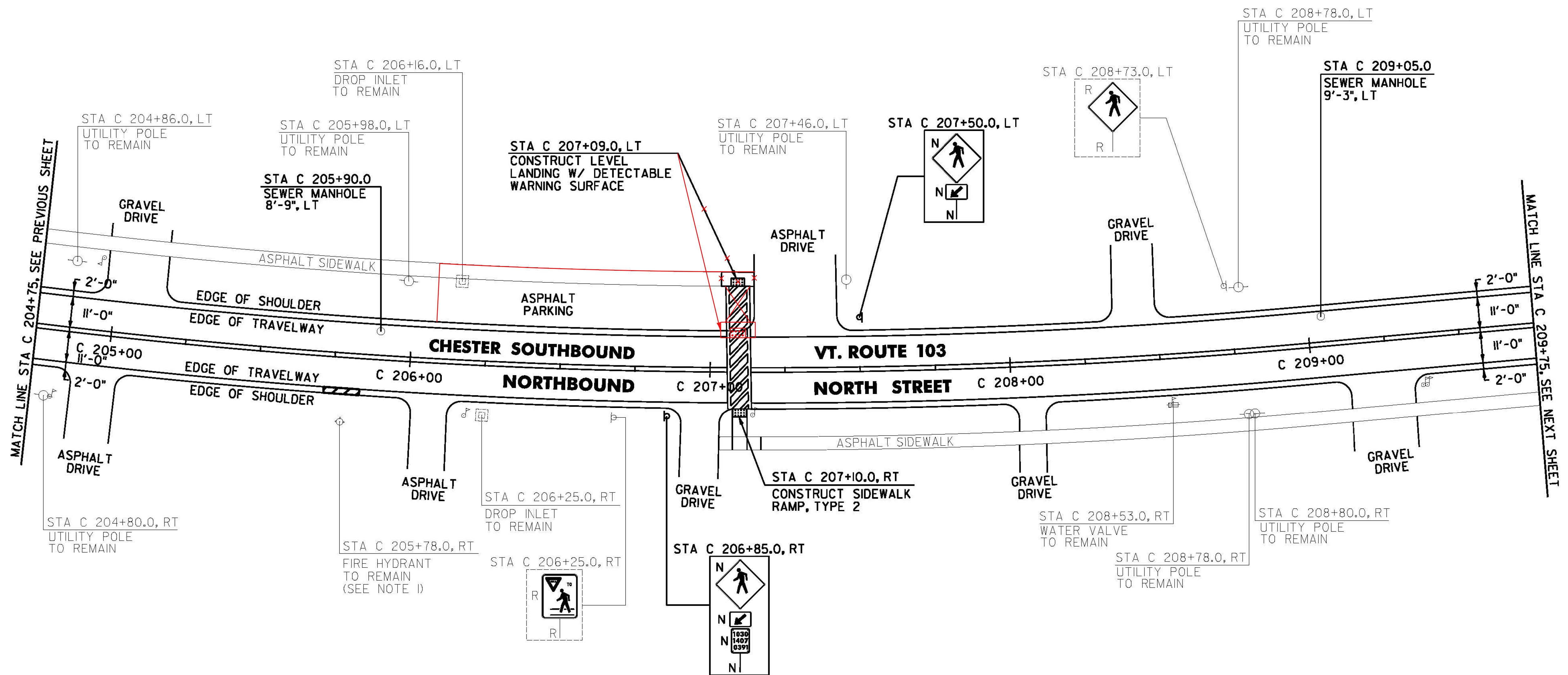
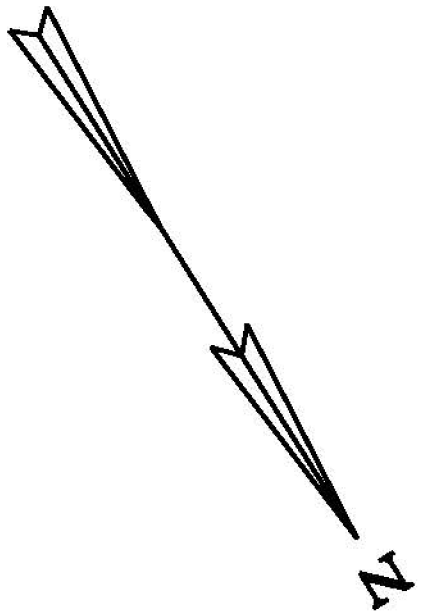
**DURABLE 4 INCH WHITE LINE, TYPE A TAPE AND  
TEMPORARY 4 INCH WHITE LINE, PAINT**  
(ALL LINES WILL INCLUDE EDGE LINE BREAKS AND  
RADIUS FOR TOWN HIGHWAYS)  
CHESTER:  
STA C 204+75.00 - STA C 209+75.00 EDGE LINE LT & RT

**DURABLE 4 INCH YELLOW LINE, TYPE A TAPE AND  
TEMPORARY 4 INCH YELLOW LINE, PAINT**  
(ALL LINES WILL INCLUDE C/L LINE BREAKS FOR TOWN HIGHWAYS)  
S = SOLID, D = DASHED  
CHESTER:  
STA C 204+75.00 - STA C 209+75.00 LT & RT  
S - S

**DURABLE CROSSWALK MARKING, TYPE A TAPE AND  
TEMPORARY CROSSWALK MARKING, PAINT**  
CHESTER:  
STA C 207+09.50 LT/RT

REMOVING SIGNS  
AS SHOWN - 2

**DURABLE 8 INCH WHITE LINE, TYPE A TAPE**  
CHESTER:  
STA C 205+72.00 - STA C 205+84.00 RT, FIRE HYDRANT, NO PARKING



**PORTLAND CEMENT CONCRETE SIDEWALK, 5 INCH**  
CHESTER:  
STA C 207+09.0 LT  
STA C 207+10.0 RT

**DETECTABLE WARNING SURFACE**  
CHESTER:  
STA C 207+09.0 LT  
STA C 207+10.0 RT

**CHANGING ELEVATION OF SEWER MANHOLES**  
CHESTER:  
STA C 205+90.0 LT  
STA C 209+05.0 LT

**SIGN LEGEND**  
R = REMOVE  
S = SALVAGE  
N = NEW  
RET = RETAIN  
B-B = BACK TO BACK  
EXISTING = \_\_\_\_\_  
NEW = \_\_\_\_\_  
R = RETURN TO TOWN  
OF CHESTER

NOTE:

I. SEE SHEET 16 FOR FIRE HYDRANT PAVEMENT MARKING DETAIL.

NOT TO SCALE

**CHESTER  
PROJECT  
LAYOUT  
SHEET #25**

PROJECT NAME: CHESTER-SPRINGFIELD-ROCKINGHAM-WINDSOR

PROJECT NUMBER: STP 2952(1)

FILE NAME: z13c518bdr\_seg01.dgn

PROJECT LEADER: D. GOZALKOWSKI

DESIGNED BY: A. HAWKINS

PLOT DATE: 3/27/2015

DRAWN BY: A. KIRBY

CHECKED BY: J. SHIELDS

SHEET 55 OF 309