

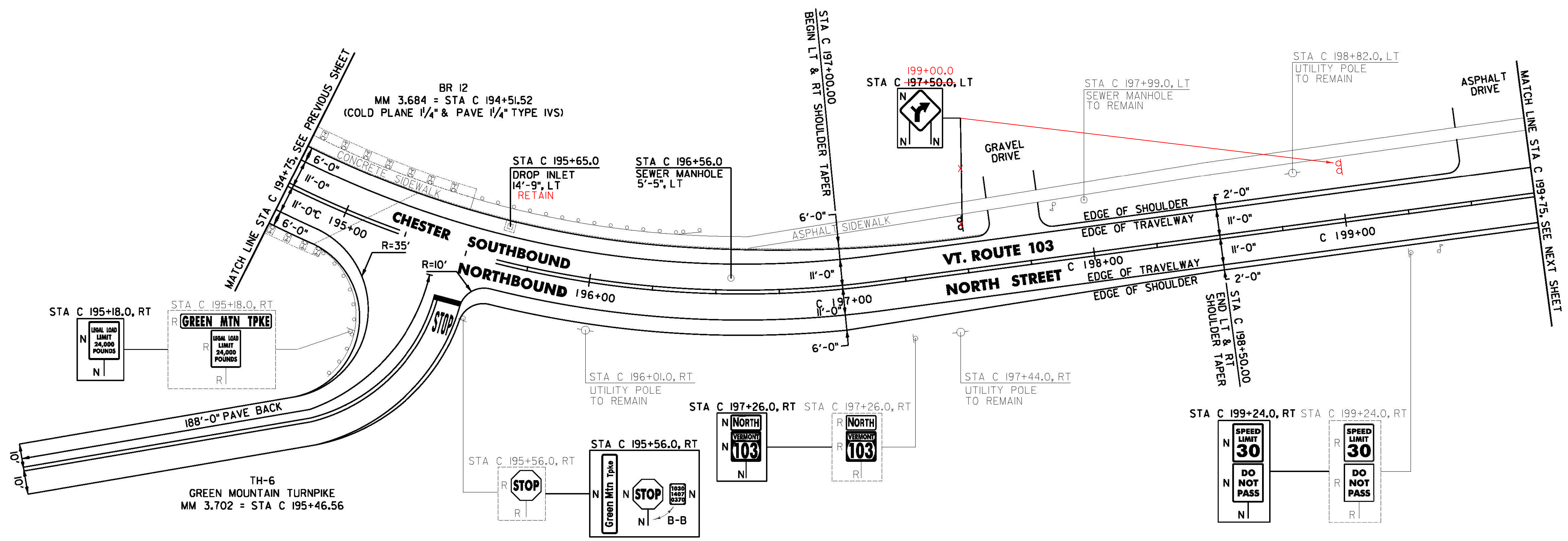
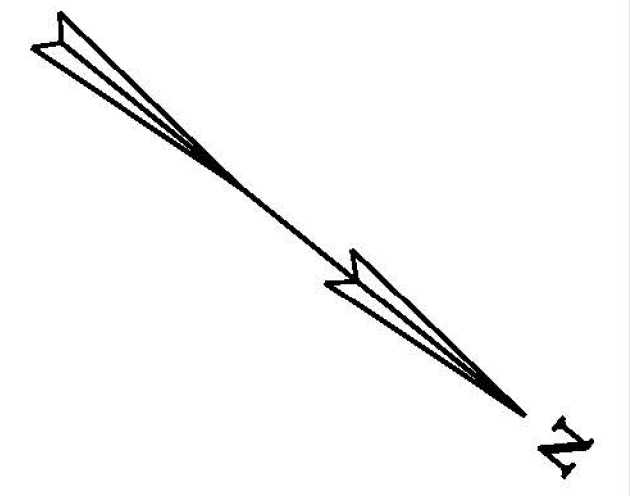
**DURABLE 4 INCH WHITE LINE, TYPE A TAPE AND
TEMPORARY 4 INCH WHITE LINE, PAINT**
(ALL LINES WILL INCLUDE EDGE LINE BREAKS AND
RADIUS FOR TOWN HIGHWAYS)
CHESTER:
STA C 194+75.00 - STA C 199+75.00 EDGE LINE LT & RT
STA C 195+46.56 EDGE LINES RT, TH-6

**DURABLE 4 INCH YELLOW LINE, TYPE A TAPE AND
TEMPORARY 4 INCH YELLOW LINE, PAINT**
(ALL LINES WILL INCLUDE C/L LINE BREAKS FOR TOWN HIGHWAYS)
S = SOLID, D = DASHED
CHESTER:
STA C 194+75.00 - STA C 199+75.00 LT & RT
STA C 195+46.56 DOUBLE SOLID RT, TH-6

DURABLE LETTER OR SYMBOL, TYPE D TAPE
CHESTER:
STA C 195+46.56 RT, TH-6 "S,T,O,P" (4 EA)
TEMPORARY LETTER OR SYMBOL, PAINT
CHESTER:
STA C 195+46.56 RT, TH-6 "S,T,O,P" (8 EA)

**DURABLE 24 INCH STOP BAR, TYPE A TAPE AND
TEMPORARY 24 INCH STOP BAR, PAINT**
CHESTER:
STA C 195+46.56 RT, TH-6

REMOVING SIGNS
AS SHOWN - 7



**REHAB. DROP INLETS, CATCH BASINS,
OR MANHOLES, CLASS I, II OR III**
CHESTER:
- STA C 195+65.0 LT

CHANGING ELEVATION OF SEWER MANHOLES
CHESTER:
STA C 196+56.0 LT

REMOVE AND REPLACE REFLECTOR UNIT
CHESTER:
STA C 194+97.0 RT
STA C 195+18.0 RT
STA C 195+47.0 LT
STA C 195+78.3 LT
STA C 196+09.5 LT

SIGN LEGEND
R = REMOVE
S = SALVAGE
N = NEW
RET = RETAIN
B-B = BACK TO BACK
EXISTING = _____
NEW = _____
O = RETURN TO TOWN
OF CHESTER

NOT TO SCALE

CHESTER PROJECT LAYOUT SHEET #23	PROJECT NAME: CHESTER-SPRINGFIELD-ROCKINGHAM-WINDSOR
	PROJECT NUMBER: STP 2952(1)
	FILE NAME: z13c518bdr_seg01.dgn PROJECT LEADER: D. GOZALKOWSKI DESIGNED BY: A. HAWKINS
	PLOT DATE: 3/27/2015 DRAWN BY: A. KIRBY CHECKED BY: J. SHIELDS SHEET 53 OF 309