

DURABLE 4 INCH WHITE LINE, TYPE A TAPE AND TEMPORARY 4 INCH WHITE LINE, PAINT
 (ALL LINES WILL INCLUDE EDGE LINE BREAKS AND RADIUS FOR TOWN HIGHWAYS)
 CHESTER:
 STA C 170+25.00 - STA C 175+25.00 EDGE LINE LT & RT
 STA C 172+39.20 EDGE LINES RT, TH-125

DURABLE 4 INCH YELLOW LINE, TYPE A TAPE AND TEMPORARY 4 INCH YELLOW LINE, PAINT
 (ALL LINES WILL INCLUDE C/L LINE BREAKS FOR TOWN HIGHWAYS)
 S = SOLID, D = DASHED
 CHESTER:
 STA C 170+25.00 - STA C 175+25.00 LT & RT
 STA C 172+39.20 DOUBLE SOLID RT, TH-125

DURABLE 8 INCH WHITE LINE, TYPE A TAPE
 STA C 166+68.00 - STA C 166+80.00 RT

DURABLE 24 INCH STOP BAR, TYPE A TAPE AND TEMPORARY 24 INCH STOP BAR, PAINT
 CHESTER:
 STA C 172+39.20 RT, TH-125

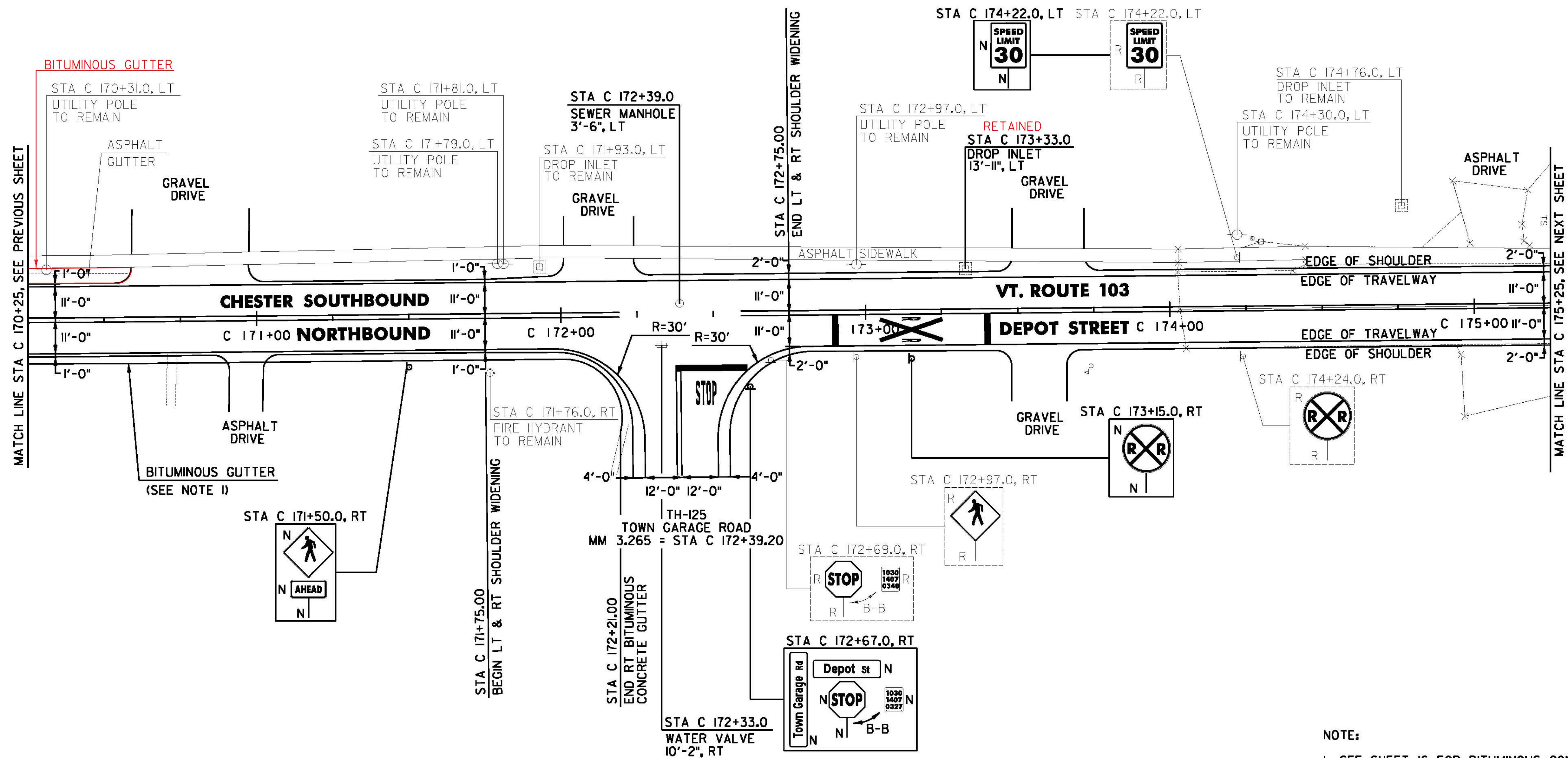
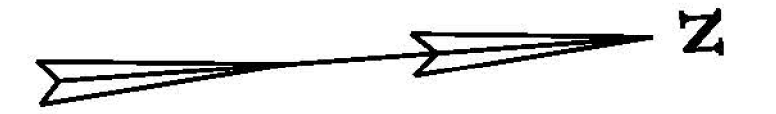
DURABLE LETTER OR SYMBOL, TYPE D TAPE
 CHESTER:
 STA C 172+39.20 RT, TH-125 "S,T,O,P" (4 EA)

TEMPORARY LETTER OR SYMBOL, PAINT
 CHESTER:
 STA C 172+39.20 RT, TH-125 "S,T,O,P" (8 EA)

DURABLE RAILROAD CROSSING SYMBOL, TYPE D TAPE
 CHESTER:
 STA C 173+15.0, RT (1 EA)

TEMPORARY RAILROAD CROSSING SYMBOL, PAINT
 CHESTER:
 STA C 173+15.0, RT (2 EA)

REMOVING SIGNS
 AS SHOWN - 5



REHAB DROP INLETS, CATCH BASINS, OR MANHOLES, CLASS I, II OR III
 CHESTER:
~~STA C 173+33.0 LT~~
CHANGING ELEVATION OF SEWER MANHOLES
 CHESTER:
 STA C 172+39.0 LT

BITUMINOUS CONCRETE GUTTERS AND TRAFFIC ISLANDS
 CHESTER:
 STA C 170+25.0 - STA C 172+21.0 RT (4.9 T)
ADJUST ELEVATION OF VALVE BOX
 CHESTER:
 STA C 172+33.0 RT

SIGN LEGEND
 R = REMOVE
 S = SALVAGE
 N = NEW
 RET = RETAIN
 B-B = BACK TO BACK
 EXISTING = _____
 NEW = _____
 ⊙ = RETURN TO TOWN OF CHESTER

NOTE:
 1. SEE SHEET 16 FOR BITUMINOUS CONCRETE GUTTER DETAIL.

NOT TO SCALE

CHESTER PROJECT LAYOUT SHEET #18	PROJECT NAME: CHESTER-SPRINGFIELD-ROCKINGHAM-WINDSOR
	PROJECT NUMBER: STP 2952(1)
	FILE NAME: z13c518bdr_seg01.dgn
	PLOT DATE: 3/27/2015
	DRAWN BY: A. KIRBY
	CHECKED BY: J. SHIELDS
	SHEET 48 OF 309