

**DURABLE 4 INCH WHITE LINE, TYPE A TAPE AND TEMPORARY 4 INCH WHITE LINE, PAINT**  
 (ALL LINES WILL INCLUDE EDGE LINE BREAKS AND RADIUS FOR TOWN HIGHWAYS)

CHESTER:  
 STA D 7+25.00 - STA D 8+97.00 EDGE LINE LT & RT (NON-PARTICIPATING)  
 STA C 157+50.00 - STA C 160+25.00 EDGE LINE LT & RT  
 STA C 158+98.00 - STA C 160+00.00 DOTTED LANE LINE LT

**DURABLE 4 INCH YELLOW LINE, TYPE A TAPE AND TEMPORARY 4 INCH YELLOW LINE, PAINT**  
 (ALL LINES WILL INCLUDE C/L LINE BREAKS FOR TOWN HIGHWAYS)

S = SOLID, D = DASHED  
 CHESTER:  
 STA D 7+25.00 - STA D 8+97.00 (NON-PARTICIPATING) LT C RT S - S  
 STA C 157+50.00 - STA C 160+25.00 S - S  
 STA D 8+97.00 - STA D 9+84.00 DOUBLE SOLID C/L & RT

**DURABLE 24 INCH STOP BAR, TYPE A TAPE AND TEMPORARY 24 INCH STOP BAR, PAINT**

CHESTER:  
 STA C 157+89.00 LT

**DURABLE LETTER OR SYMBOL, TYPE D TAPE**

CHESTER:  
 STA C 157+89.00 LT, "S,T,O,P" (4 EA)

**TEMPORARY LETTER OR SYMBOL, PAINT**

CHESTER:  
 STA C 157+89.00 LT, "S,T,O,P" (8 EA)

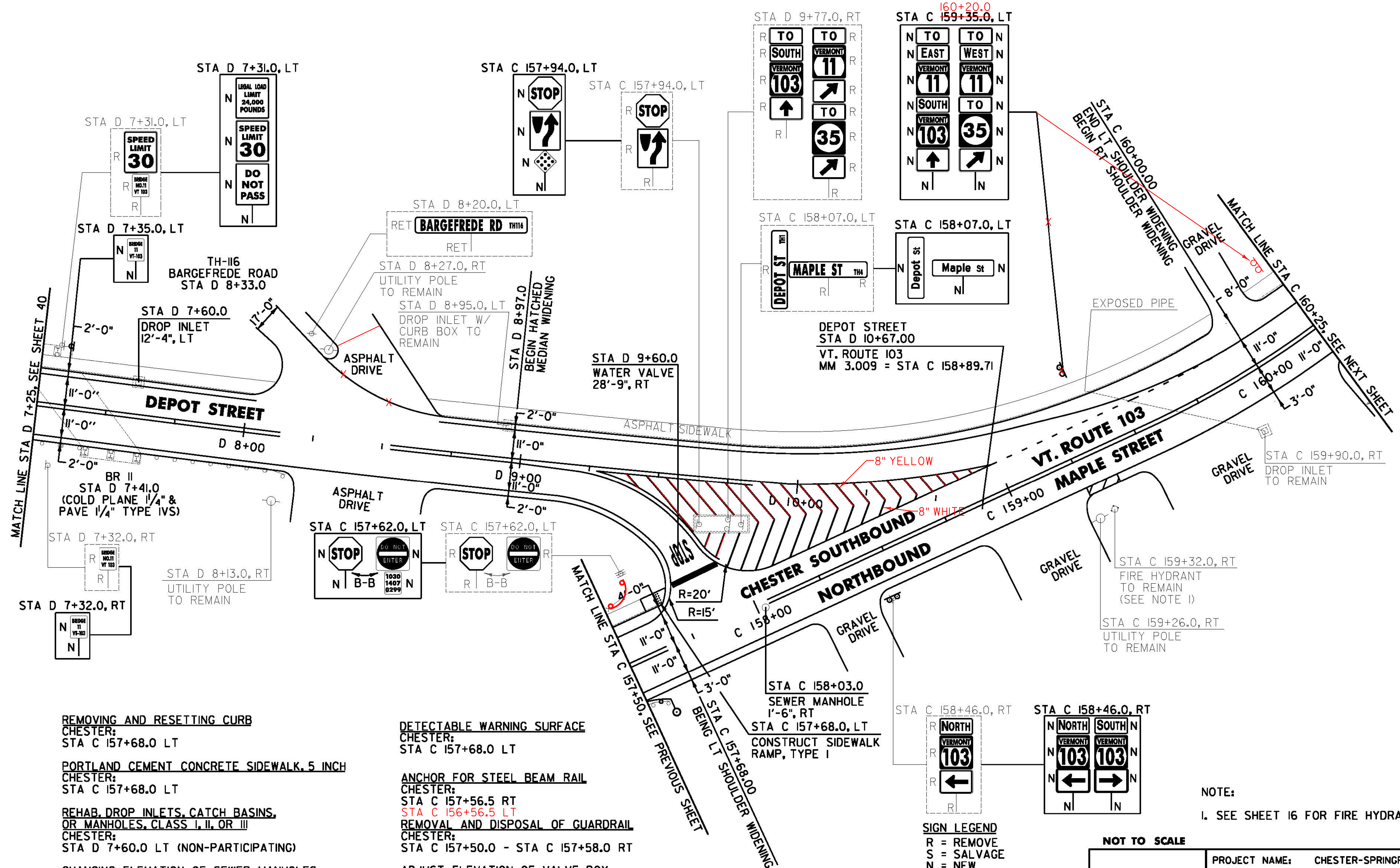
**DURABLE 8 INCH WHITE LINE, TYPE A TAPE**

CHESTER:  
 STA C 157+95.00 - STA C 158+98.00 HATCHED GORE AREA LT  
 STA C 159+26.00 - STA C 159+38.00 RT, FIRE HYDRANT, NO PARKING

**DURABLE 8 INCH YELLOW LINE, TYPE A TAPE**

CHESTER:  
 STA D 8+97.00 - STA D 9+84.00 HATCHED MEDIAN RT (NON-PARTICIPATING)  
 10+67.0

**REMOVING SIGNS AS SHOWN - 22**



**REMOVING AND RESETTING CURB**

CHESTER:  
 STA C 157+68.0 LT

**PORTLAND CEMENT CONCRETE SIDEWALK, 5 INCH**

CHESTER:  
 STA C 157+68.0 LT

**REHAB. DROP INLETS, CATCH BASINS, OR MANHOLES, CLASS I, II, OR III**

CHESTER:  
 STA D 7+60.0 LT (NON-PARTICIPATING)

**CHANGING ELEVATION OF SEWER MANHOLES**

CHESTER:  
 STA C 158+03.0 RT

**STEEL BEAM GUARDRAIL, GALVANIZED**

CHESTER:  
 STA C 157+50.0 - STA C 157+63.0 RT  
 STA C 157+50.0 - STA C 157+63.0 LT

**DETECTABLE WARNING SURFACE**

CHESTER:  
 STA C 157+68.0 LT

**ANCHOR FOR STEEL BEAM RAIL**

CHESTER:  
 STA C 157+56.5 RT  
 STA C 156+56.5 LT  
**REMOVAL AND DISPOSAL OF GUARDRAIL**  
 CHESTER:  
 STA C 157+50.0 - STA C 157+58.0 RT

**ADJUST ELEVATION OF VALVE BOX**

CHESTER:  
 STA D 9+60.0 RT (NON-PARTICIPATING)

**DELINEATOR WITH STEEL POST**

CHESTER:  
 STA C 157+63.0 RT

**SIGN LEGEND**  
 R = REMOVE  
 S = SALVAGE  
 N = NEW  
 RET = RETAIN  
 B-B = BACK TO BACK  
 EXISTING =   
 NEW =   
 R = RETURN TO TOWN OF CHESTER

NOTE:  
 I. SEE SHEET 16 FOR FIRE HYDRANT PAVEMENT MARKING DETAIL.

**NOT TO SCALE**

**CHESTER PROJECT LAYOUT SHEET #15**

PROJECT NAME: CHESTER-SPRINGFIELD-ROCKINGHAM-WINDSOR

PROJECT NUMBER: STP 2952(1)

FILE NAME: z13c51bdr\_seg01.dgn  
 PROJECT LEADER: D. GOZALKOWSKI  
 DESIGNED BY: A. HAWKINS

PLOT DATE: 3/27/2015  
 DRAWN BY: A. KIRBY  
 CHECKED BY: J. SHIELDS  
 SHEET 45 OF 309