

DURABLE 4 INCH YELLOW LINE, RECESSED TYPE A TAPE AND TEMPORARY 4 INCH YELLOW LINE, PAINT
 (ALL LINES WILL INCLUDE C/L LINE BREAKS FOR TOWN HIGHWAYS)
 S = SOLID, D = DASHED
 CHESTER:
 STA C 269+50.00 - STA C 275+00.00 LT @ RT
 STA D 0+73.00 - STA D 2+25.00 (NON-PARTICIPATING) S - S
 STA C 270+12.48 DOUBLE SOLID RT, TH-100

DURABLE 4 INCH WHITE LINE, TYPE A TAPE AND TEMPORARY 4 INCH WHITE LINE, PAINT
 (ALL LINES WILL INCLUDE EDGE LINE BREAKS AND RADIUS FOR TOWN HIGHWAYS)
 CHESTER:
 STA C 269+50.00 - STA C 275+00.00 EDGE LINE LT & RT
 STA D 0+73.00 - STA D 2+25.00 EDGE LINE LT & RT (NON-PARTICIPATING)
 STA C 270+98.00 - STA C 272+73.00 SIDEWALK DESIGNATION LINE LT
 STA C 270+98.00 - STA C 272+73.00 SIDEWALK DESIGNATION LINE RT
 STA C 272+91.00 - STA C 275+00.00 SIDEWALK DESIGNATION LINE LT
 STA C 273+49.00 - STA C 273+71.00 SIDEWALK DESIGNATION LINE LT

DURABLE CROSSWALK MARKING, TYPE A TAPE AND TEMPORARY CROSSWALK MARKING, PAINT
 CHESTER:
 STA C 269+77.00 LT/RT
 STA C 270+12.48 RT, TH-100
 STA C 269+97.00 - STA C 270+89.00 LT

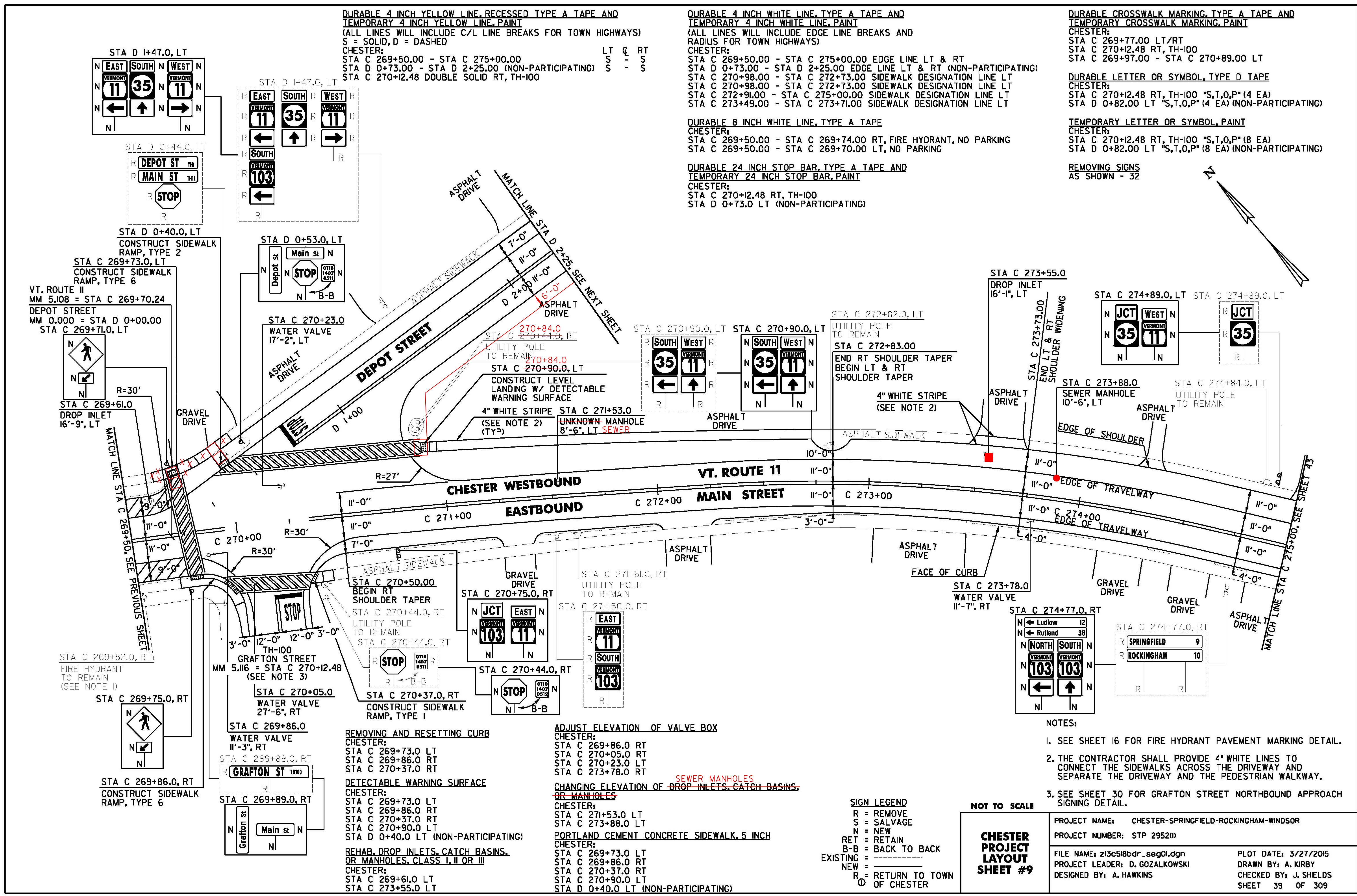
DURABLE 8 INCH WHITE LINE, TYPE A TAPE
 CHESTER:
 STA C 269+50.00 - STA C 269+74.00 RT, FIRE HYDRANT, NO PARKING
 STA C 269+50.00 - STA C 269+70.00 LT, NO PARKING

DURABLE 24 INCH STOP BAR, TYPE A TAPE AND TEMPORARY 24 INCH STOP BAR, PAINT
 CHESTER:
 STA C 270+12.48 RT, TH-100
 STA D 0+73.00 LT (NON-PARTICIPATING)

DURABLE LETTER OR SYMBOL, TYPE D TAPE
 CHESTER:
 STA C 270+12.48 RT, TH-100 "S,T,O,P" (4 EA)
 STA D 0+82.00 LT "S,T,O,P" (4 EA) (NON-PARTICIPATING)

TEMPORARY LETTER OR SYMBOL, PAINT
 CHESTER:
 STA C 270+12.48 RT, TH-100 "S,T,O,P" (8 EA)
 STA D 0+82.00 LT "S,T,O,P" (8 EA) (NON-PARTICIPATING)

REMOVING SIGNS
 AS SHOWN - 32



REMOVING AND RESETTING CURB
 CHESTER:
 STA C 269+73.00 LT
 STA C 269+86.00 RT
 STA C 270+37.00 RT

DETECTABLE WARNING SURFACE
 CHESTER:
 STA C 269+73.00 LT
 STA C 269+86.00 RT
 STA C 270+37.00 RT
 STA D 0+40.00 LT (NON-PARTICIPATING)

REHAB. DROP INLETS, CATCH BASINS, OR MANHOLES, CLASS I, II OR III
 CHESTER:
 STA C 269+61.00 LT
 STA C 273+55.00 LT

ADJUST ELEVATION OF VALVE BOX
 CHESTER:
 STA C 269+86.00 RT
 STA C 270+05.00 RT
 STA C 270+23.00 LT
 STA C 273+78.00 RT

CHANGING ELEVATION OF DROP INLETS, CATCH BASINS, OR MANHOLES
 CHESTER:
 STA C 271+53.00 LT
 STA C 273+88.00 LT

PORTLAND CEMENT CONCRETE SIDEWALK, 5 INCH
 CHESTER:
 STA C 269+73.00 LT
 STA C 269+86.00 RT
 STA C 270+37.00 RT
 STA C 270+90.00 LT
 STA D 0+40.00 LT (NON-PARTICIPATING)

SIGN LEGEND
 R = REMOVE
 S = SALVAGE
 N = NEW
 RET = RETAIN
 B-B = BACK TO BACK
 EXISTING =
 NEW =
 R = RETURN TO TOWN
 OF CHESTER

- NOTES:
- SEE SHEET 16 FOR FIRE HYDRANT PAVEMENT MARKING DETAIL.
 - THE CONTRACTOR SHALL PROVIDE 4" WHITE LINES TO CONNECT THE SIDEWALKS ACROSS THE DRIVEWAY AND SEPARATE THE DRIVEWAY AND THE PEDESTRIAN WALKWAY.
 - SEE SHEET 30 FOR GRAFTON STREET NORTHBOUND APPROACH SIGNING DETAIL.

CHESTER PROJECT LAYOUT SHEET #9

PROJECT NAME: CHESTER-SPRINGFIELD-ROCKINGHAM-WINDSOR
 PROJECT NUMBER: STP 2952(0)
 FILE NAME: z13c51bdr_seg01.dgn
 PROJECT LEADER: D. GOZALKOWSKI
 DESIGNED BY: A. HAWKINS

PLOT DATE: 3/27/2015
 DRAWN BY: A. KIRBY
 CHECKED BY: J. SHIELDS
 SHEET 39 OF 309