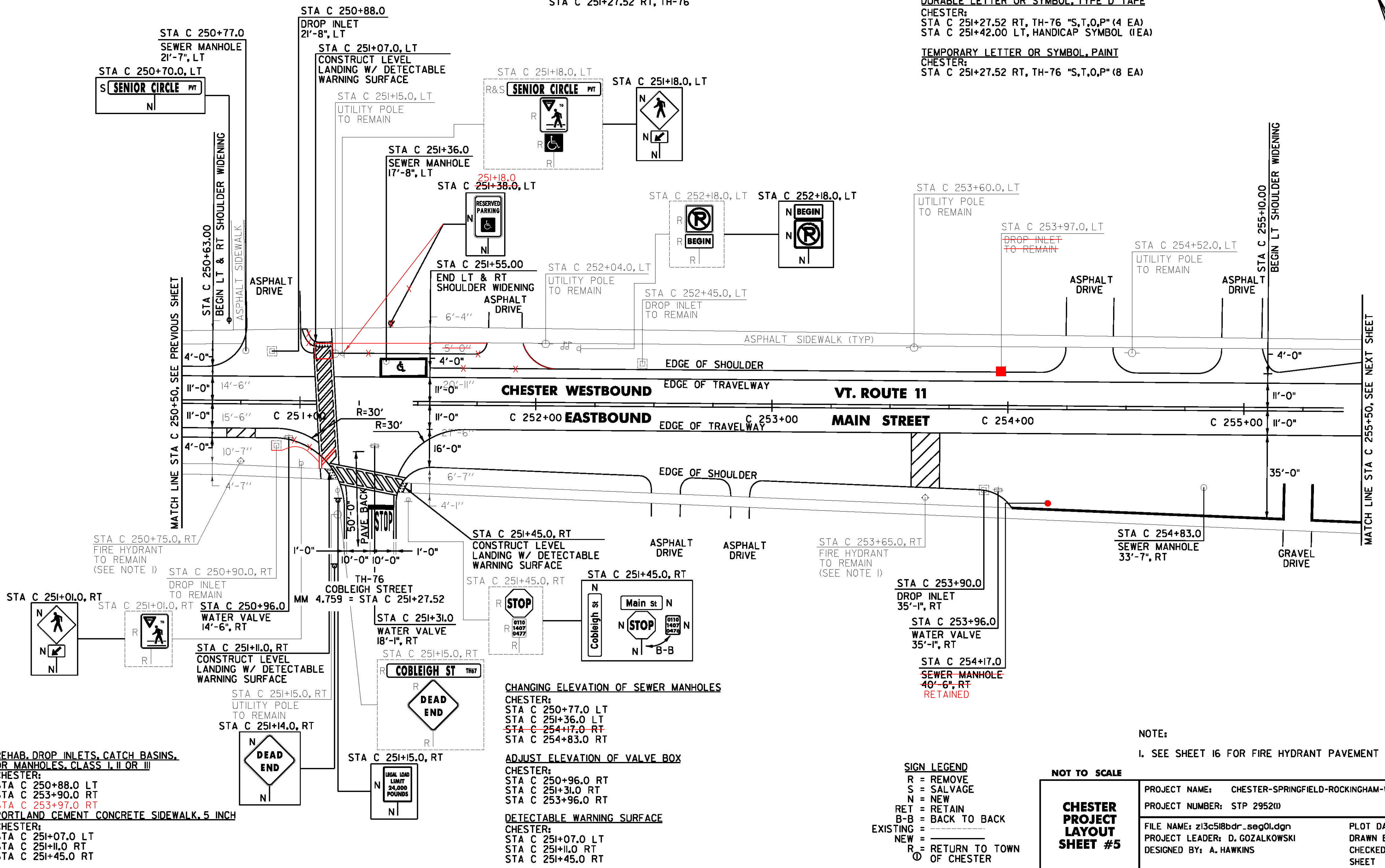
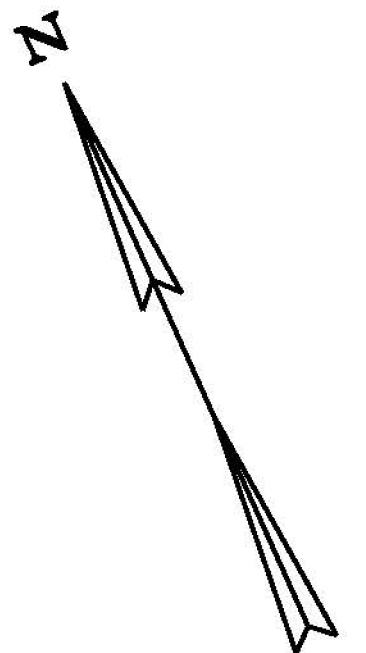


**DURABLE 4 INCH WHITE LINE, TYPE A TAPE AND TEMPORARY 4 INCH WHITE LINE, PAINT**  
 (ALL LINES WILL INCLUDE EDGE LINE BREAKS AND RADIUS FOR TOWN HIGHWAYS)  
 CHESTER:  
 STA C 250+50.00 - STA C 255+50.00 EDGE LINE LT & RT  
 STA C 251+34.00 - STA C 251+54.00 LT, PARKING SPACE  
 STA C 251+27.52 EDGE LINES RT, TH-76  
 STA C 254+02.00 - STA C 255+17.00 SIDEWALK DESIGNATION LINE RT  
 STA C 255+29.00 - STA C 255+50.00 SIDEWALK DESIGNATION LINE RT

**DURABLE 4 INCH YELLOW LINE, TYPE A TAPE AND TEMPORARY 4 INCH YELLOW LINE, PAINT**  
 (ALL LINES WILL INCLUDE C/L LINE BREAKS FOR TOWN HIGHWAYS)  
 S = SOLID, D = DASHED  
 CHESTER:  
 STA C 250+50.00 - STA C 255+50.00 LT & RT  
 STA C 251+27.52 DOUBLE SOLID RT, TH-76  
**DURABLE 24 INCH STOP BAR, TYPE A TAPE AND TEMPORARY 24 INCH STOP BAR, PAINT**  
 CHESTER:  
 STA C 251+27.52 RT, TH-76

**DURABLE 8 INCH WHITE LINE, TYPE A TAPE**  
 CHESTER:  
 STA C 250+69.00 - STA C 250+81.00 RT, FIRE HYDRANT, NO PARKING  
 STA C 253+59.00 - STA C 253+71.00 RT, FIRE HYDRANT, NO PARKING  
**DURABLE CROSSWALK MARKING, TYPE A TAPE AND TEMPORARY CROSSWALK MARKING, PAINT**  
 CHESTER:  
 STA C 251+11.00 LT/RT  
 STA C 251+27.52 RT, TH-76  
**DURABLE LETTER OR SYMBOL, TYPE D TAPE**  
 CHESTER:  
 STA C 251+27.52 RT, TH-76 "S,T,O,P" (4 EA)  
 STA C 251+42.00 LT, HANDICAP SYMBOL (1EA)  
**TEMPORARY LETTER OR SYMBOL, PAINT**  
 CHESTER:  
 STA C 251+27.52 RT, TH-76 "S,T,O,P" (8 EA)

**REMOVING SIGNS AS SHOWN - 10**  
**ERECTING SALVAGED SIGNS AS SHOWN - 1**



**REHAB, DROP INLETS, CATCH BASINS, OR MANHOLES, CLASS I, II OR III**  
 CHESTER:  
 STA C 250+88.0 LT  
 STA C 253+90.0 RT  
 STA C 253+97.0 RT  
**PORTLAND CEMENT CONCRETE SIDEWALK, 5 INCH**  
 CHESTER:  
 STA C 251+07.0 LT  
 STA C 251+11.0 RT  
 STA C 251+45.0 RT

**CHANGING ELEVATION OF SEWER MANHOLES**  
 CHESTER:  
 STA C 250+77.0 LT  
 STA C 251+36.0 LT  
 STA C 254+17.0 RT  
 STA C 254+83.0 RT  
**ADJUST ELEVATION OF VALVE BOX**  
 CHESTER:  
 STA C 250+96.0 RT  
 STA C 251+31.0 RT  
 STA C 253+96.0 RT  
**DETECTABLE WARNING SURFACE**  
 CHESTER:  
 STA C 251+07.0 LT  
 STA C 251+11.0 RT  
 STA C 251+45.0 RT

**SIGN LEGEND**  
 R = REMOVE  
 S = SALVAGE  
 N = NEW  
 RET = RETAIN  
 B-B = BACK TO BACK  
 EXISTING = \_\_\_\_\_  
 NEW = \_\_\_\_\_  
 R = RETURN TO TOWN OF CHESTER

**NOTE:**  
 I. SEE SHEET 16 FOR FIRE HYDRANT PAVEMENT MARKING DETAIL.

**NOT TO SCALE**

<b>CHESTER PROJECT LAYOUT SHEET #5</b>	PROJECT NAME: CHESTER-SPRINGFIELD-ROCKINGHAM-WINDSOR	PLOT DATE: 3/27/2015
	PROJECT NUMBER: STP 2952(1)	DRAWN BY: A. KIRBY
	FILE NAME: z13c518bdr_seg01.dgn PROJECT LEADER: D. GOZALKOWSKI DESIGNED BY: A. HAWKINS	CHECKED BY: J. SHIELDS SHEET 35 OF 309