

GPS CONTROL POINTS

PT #1 DOTTAVIO AZ MK  
 NORTH = 273787.0700  
 EAST = 1619869.4600  
 ELEV. = 577.750

GENERAL LOCATION, 10.4 MI (16.7 KM) NORTHWEST OF BELLOWS FALLS, 6 MI (9.7 KM) SOUTHWEST OF SPRINGFIELD AND 5.5 MI (8.9 KM) NORTH OF GRAFTON. TO REACH FROM THE JUNCTION OF VT ROUTE 103 AND VT ROUTE 11 EAST IN CHESTER, PROCEED SOUTHEAST ON VT ROUTE 103 FOR .8 MI (1.3 KM) TO THE MARK ON THE RIGHT (WEST). THE MARK IS 75.5 FT (23.0 M) SOUTHEAST OF THE SOUTHEAST CORNER OF THE PUTNEY PASTA BUILDING, 70 FT (21.3 M) SOUTH OF A SEWER MANHOLE, 48 FT (14.6 M) WEST OF AND LEVEL WITH THE CENTERLINE OF ROUTE 103, 14 FT (4.3 M) SOUTHEAST OF A FIRE HYDRANT AND 8.5 FT (2.6 M) EAST OF UTILITY POLE NUMBER 3/88/3/40 AND A FIBERGLASS WITNESS POST.

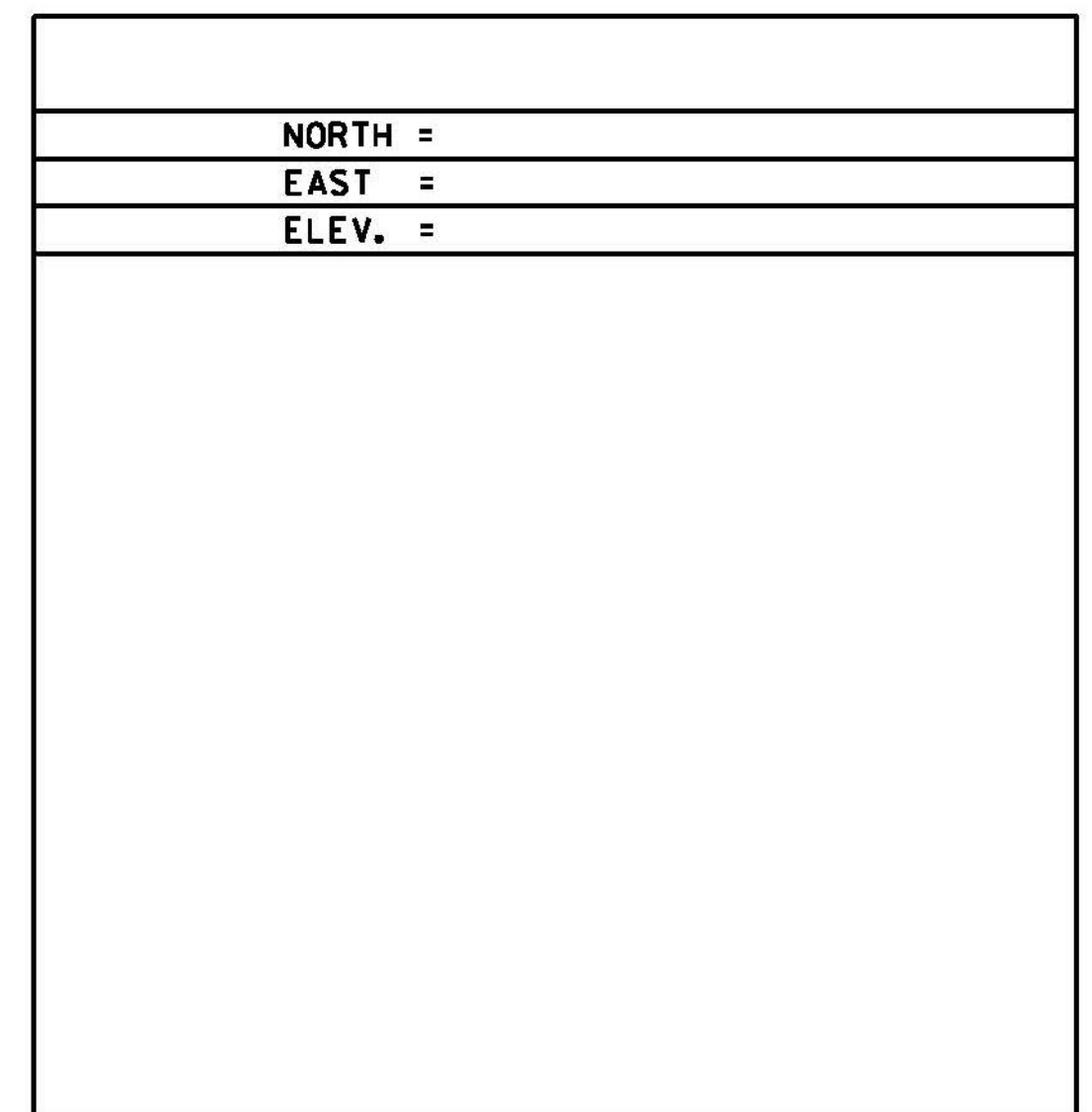
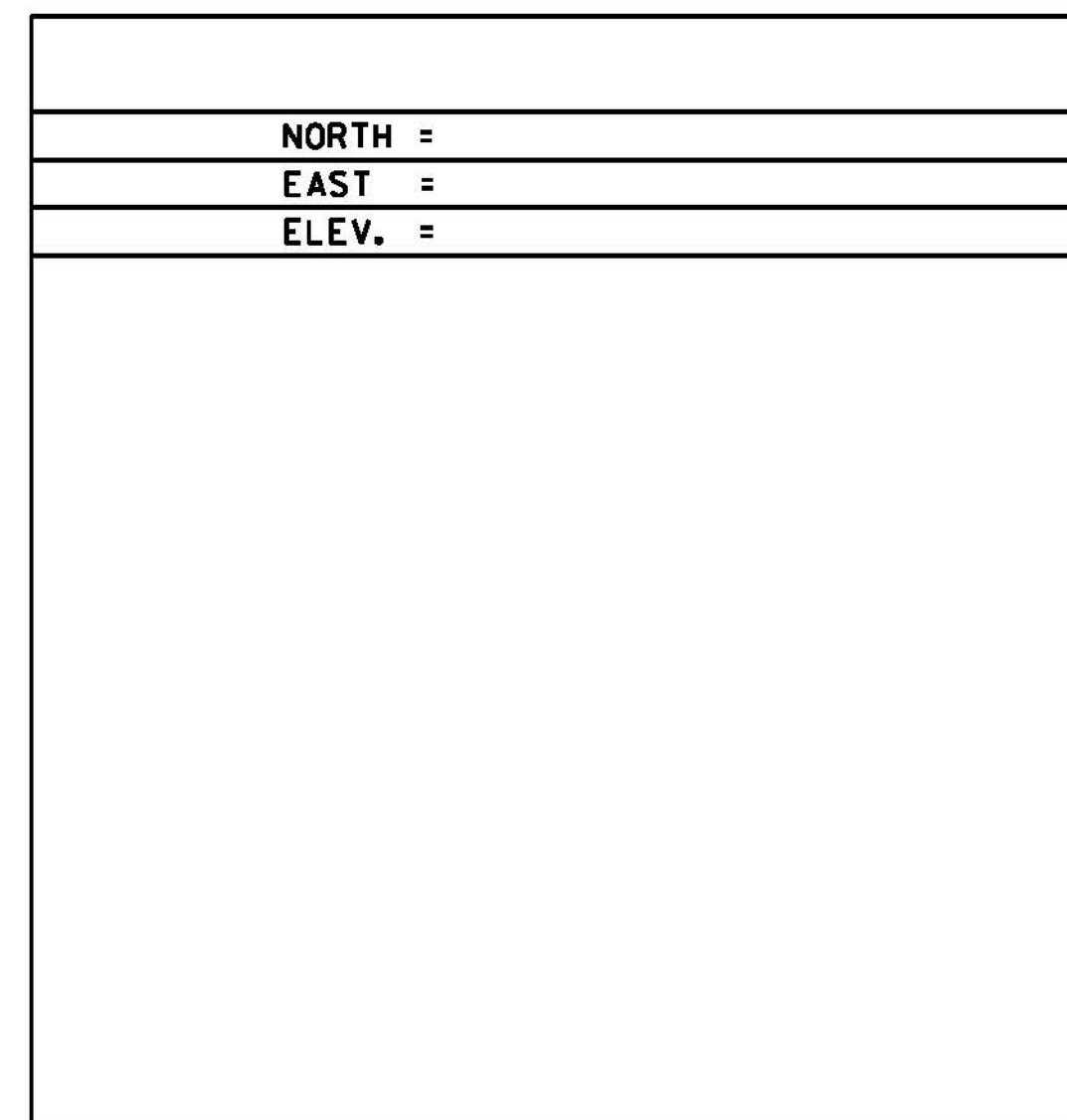
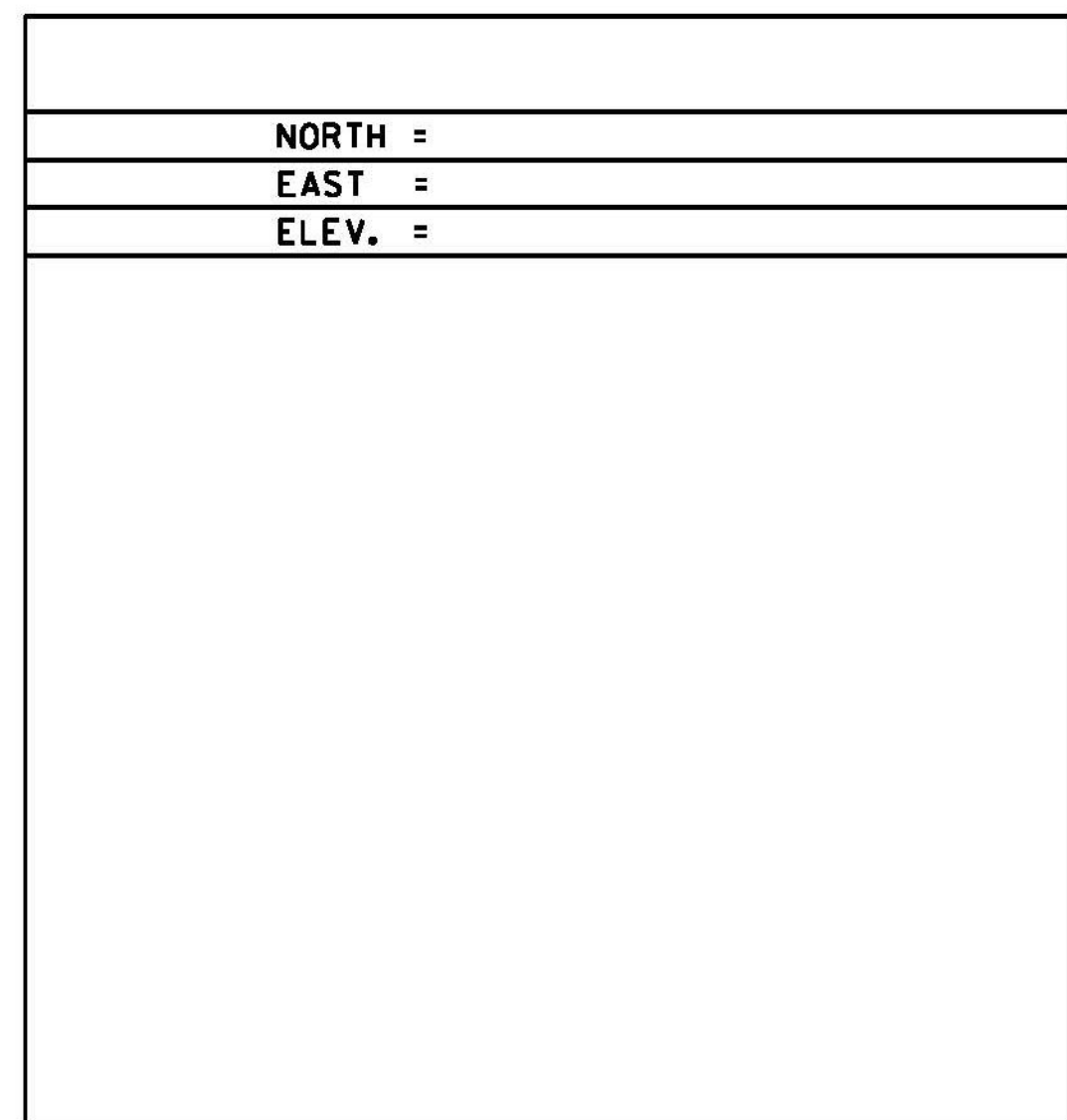
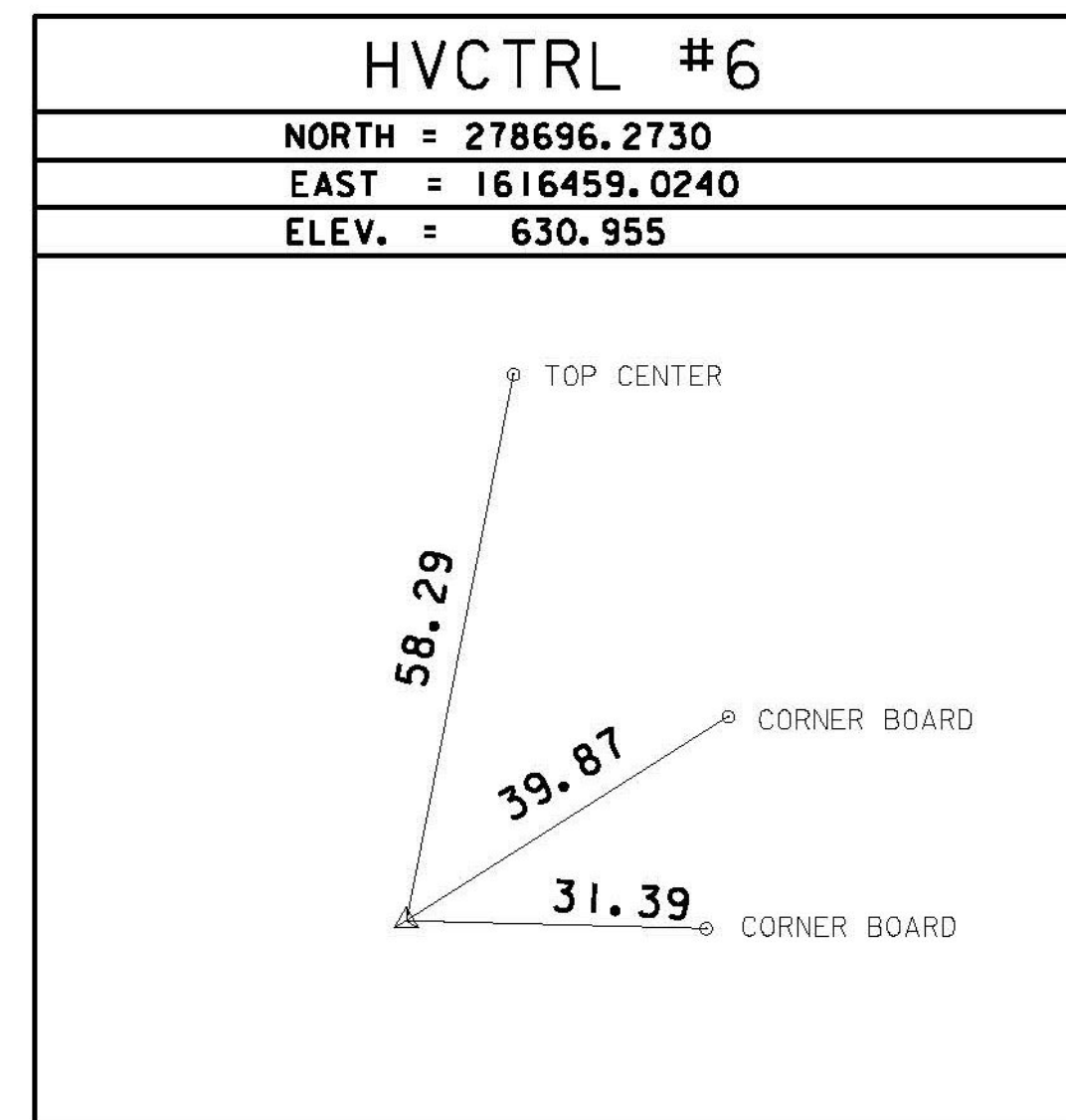
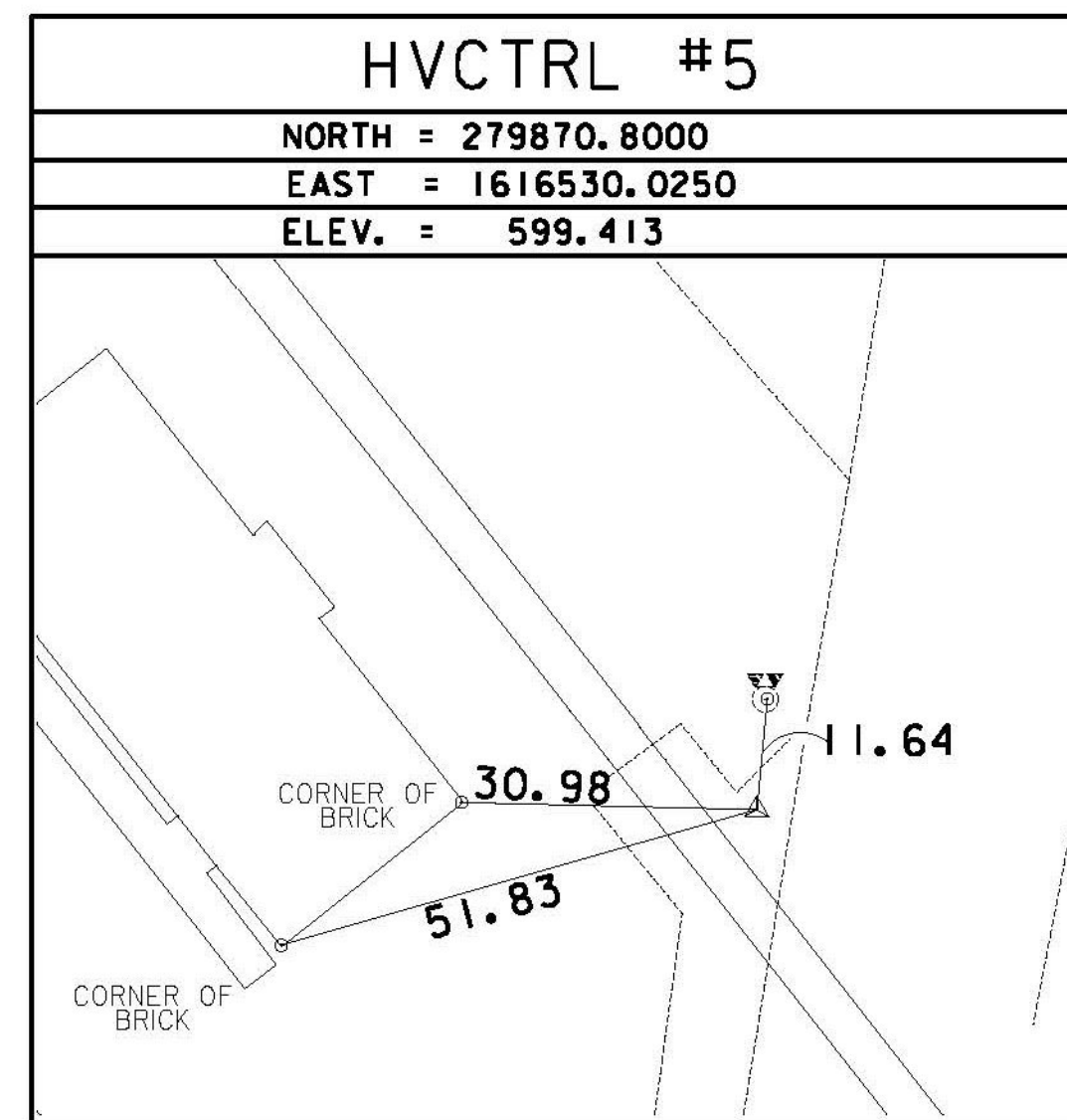
PT #10 J61  
 NORTH = 277755.1860  
 EAST = 1615603.5900  
 ELEV. = 601.700

TO REACH FROM THE INTERSECTION OF VT ROUTE 11 EAST (PLEASANT STREET) AND VT ROUTE 103 SOUTH (SOUTH MAIN STREET), GO NORTHWEST ALONG SOUTH MAIN STREET FOR 0.3 MI (0.5 KM) TO THE INTERSECTION OF MAPLE STREET RIGHT AND THE SITE OF THE MARK ON THE RIGHT. TO REACH FROM THE INTERSECTION OF VT ROUTE 35 (GRAFTON ROAD), VT ROUTE 103 (DEPOT STREET), VT ROUTE 11 (MAIN STREET AND SOUTH MAIN STREET), GO SOUTHEAST ALONG SOUTH MAIN STREET FOR 0.1 MI (0.2 KM) TO THE INTERSECTION OF MAPLE STREET LEFT. THE MARK IS A CENTER PUNCHED METAL ROD ENCASED IN A PLASTIC SLEEVE WITH HINGED ACCESS COVER SET 7 CM (3 INCHES) LOWER THAN THE TOP OF THE SLEEVE AND 9 CM (4 INCHES) BELOW GROUND SURFACE. THE MARK IS IN LINE WITH THE SOUTHWEST FACE OF THE SCOTT REALTY BUILDING. IT IS 16.5 M (54.1 FT) EAST-NORTHEAST OF AND ABOUT 0.2 M (0.7 FT) HIGHER THAN THE CENTERLINE OF SOUTH MAIN STREET, 7.6 M (24.9 FT) SOUTH-SOUTHEAST OF THE CENTERLINE OF MAPLE STREET, 4.8 M (15.7 FT) NORTH-NORTHWEST OF THE WEST CORNER OF THE SCOTT REALTY BUILDING, 10.1 M (33.1 FT) WEST OF THE NORTH CORNER OF THE BUILDING WHERE IT MEETS A PORCH AND 12.9 M (42.3 FT) NORTH OF A 30 CM (12 INCH) MAPLE.

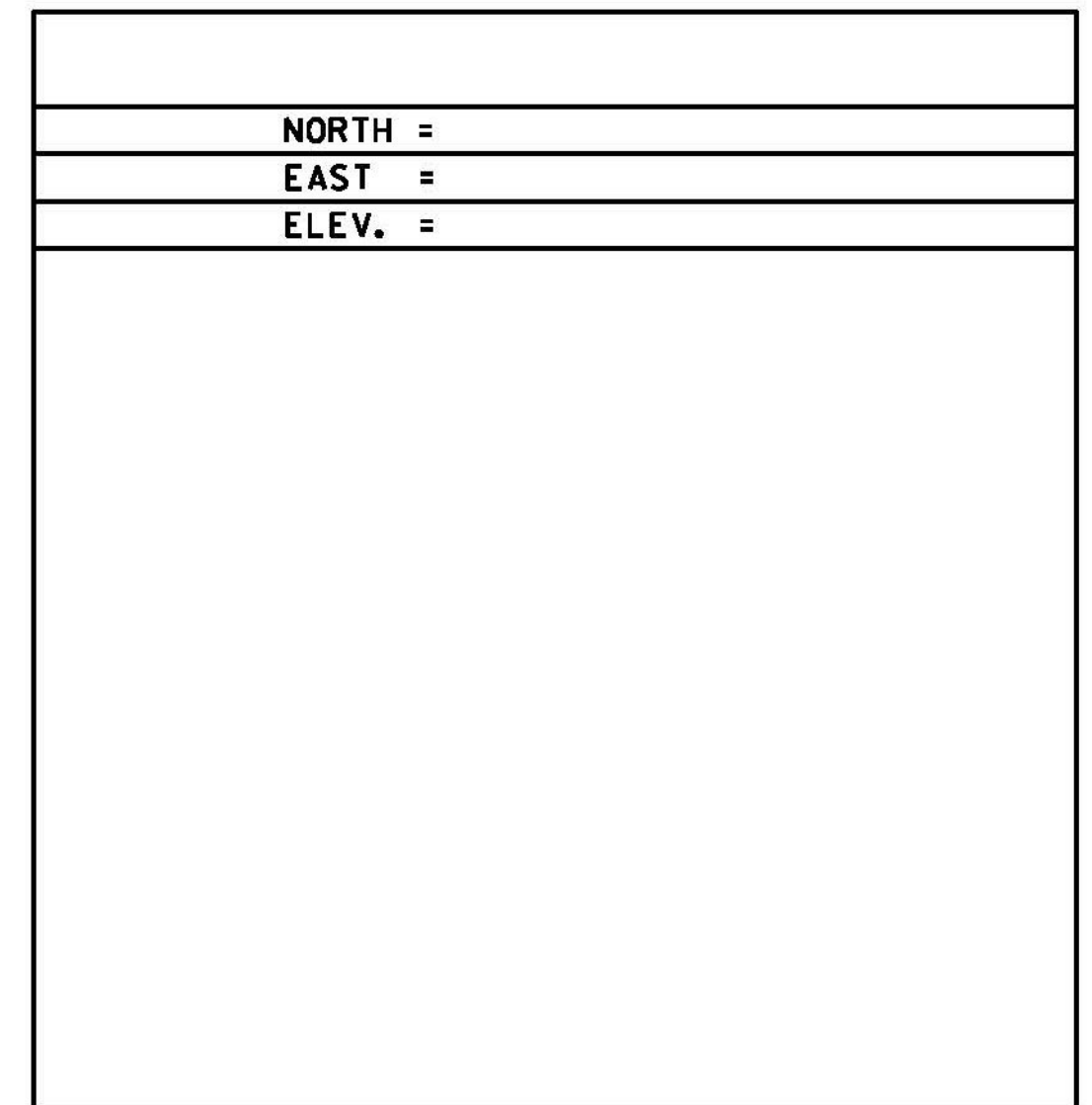
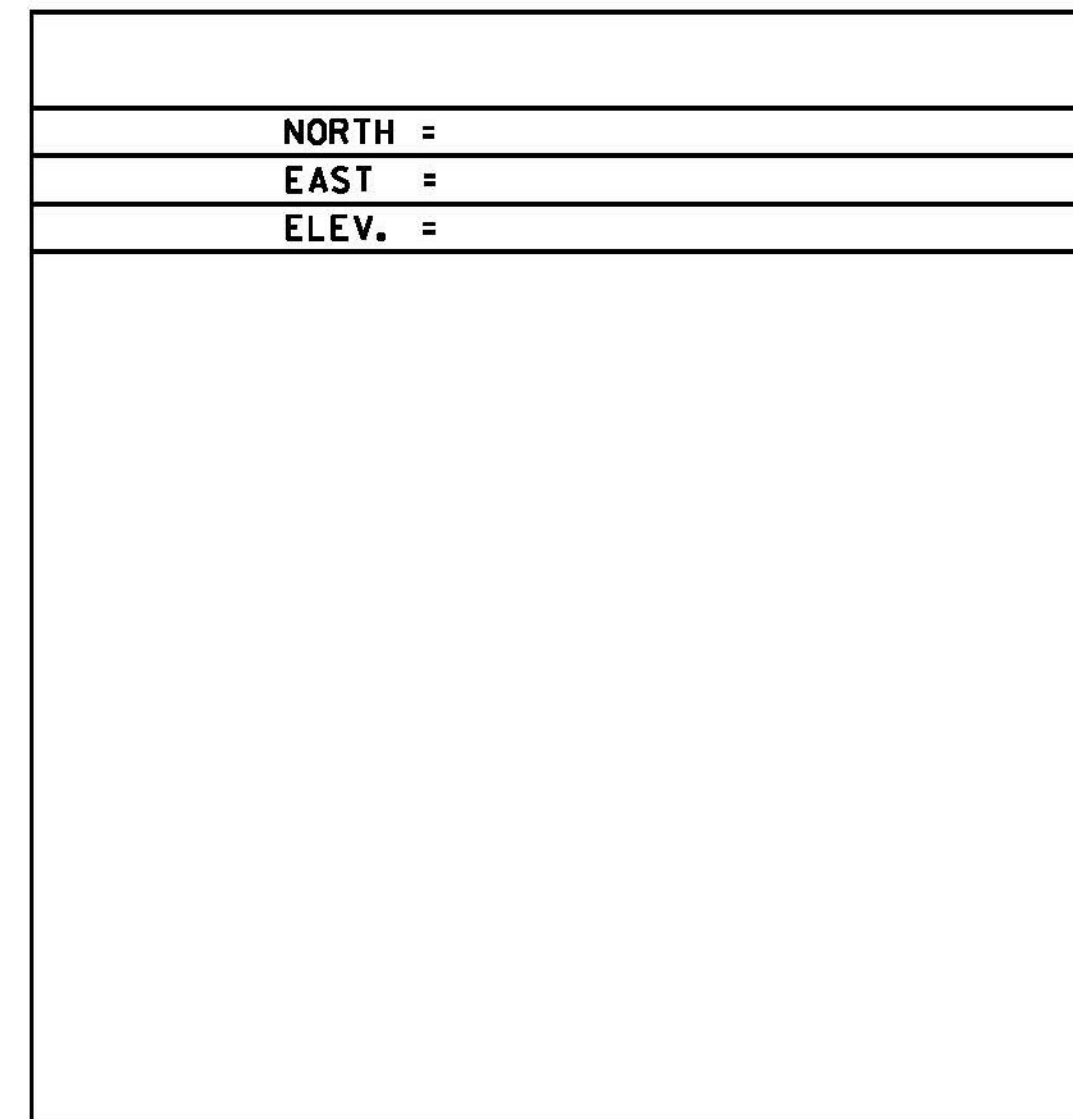
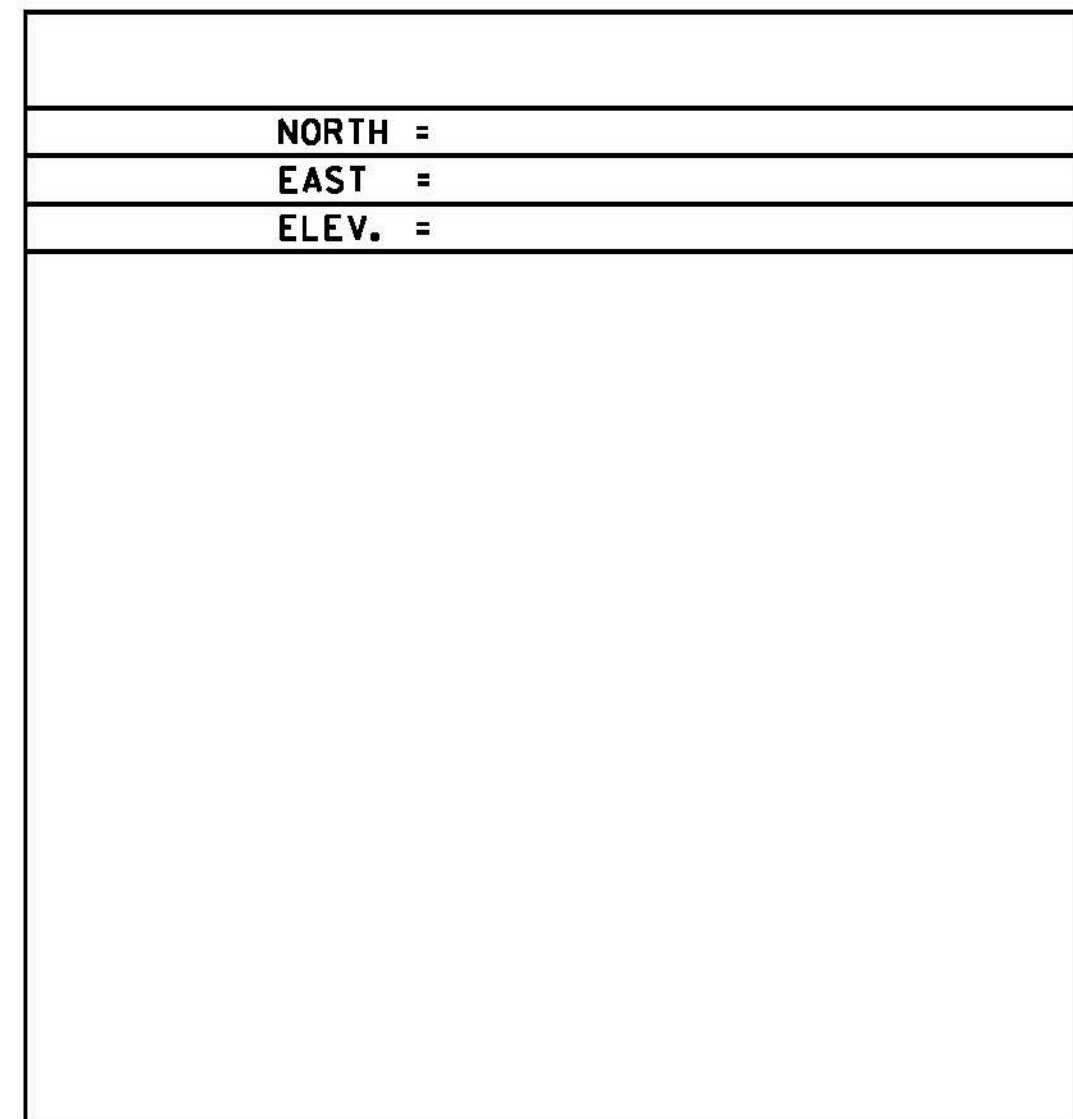
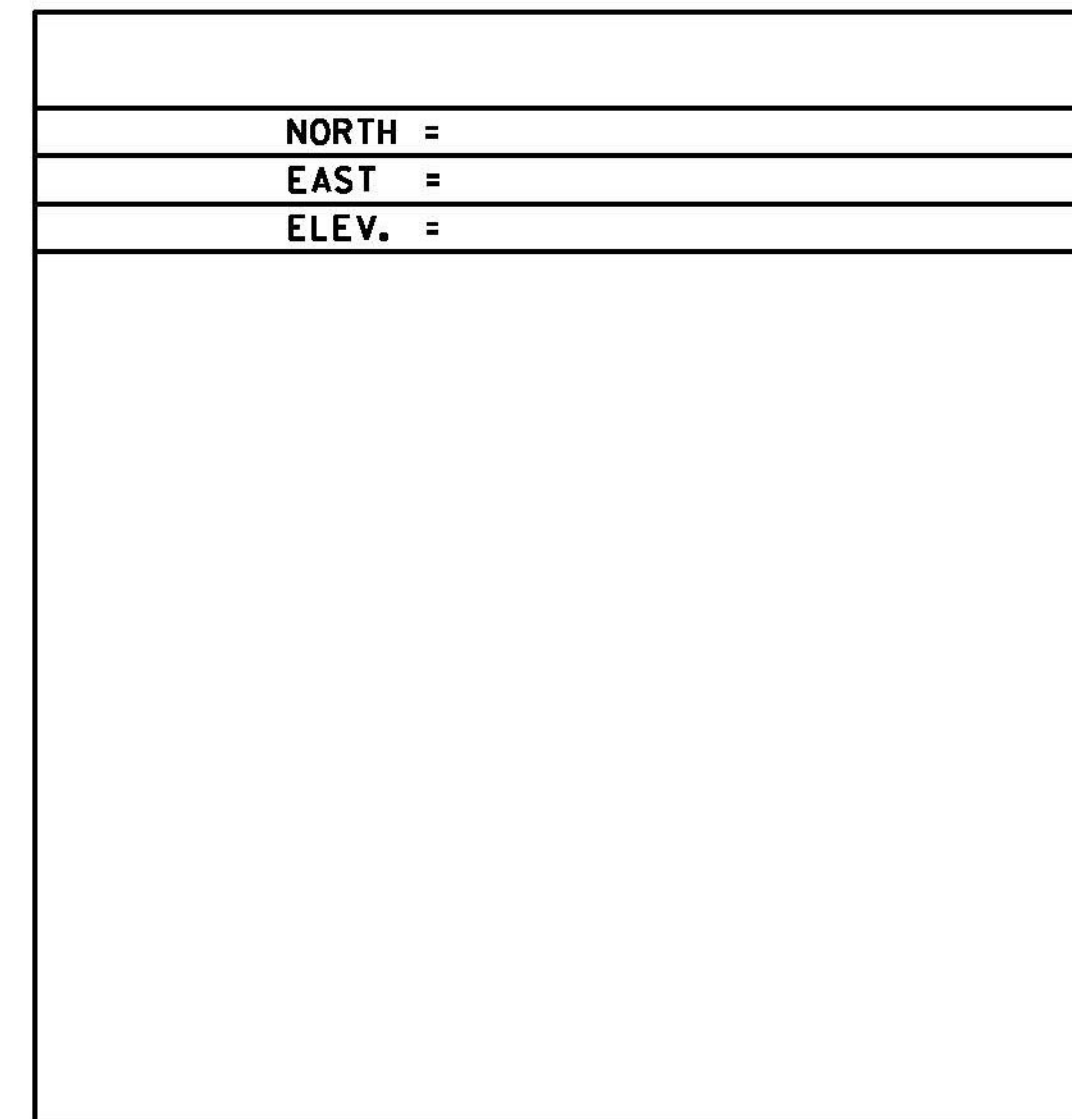
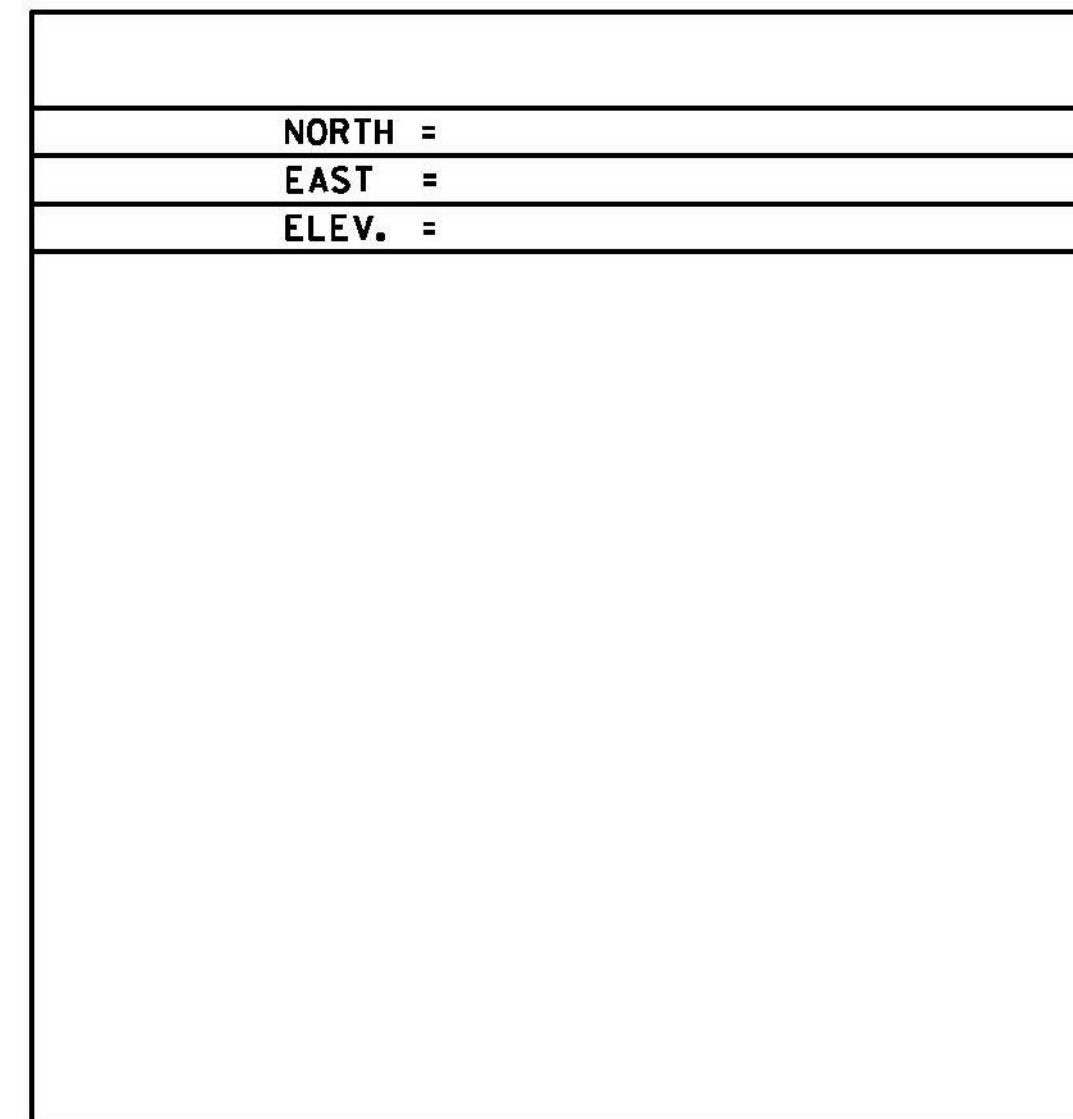
PT #2 DOTTAVIO  
 NORTH = 275233.8900  
 EAST = 1619439.5500  
 ELEV. = 563.370

GENERAL LOCATION, 10.7 MI (17.2 KM) NORTHWEST OF BELLOWS FALLS, 6 MI (9.7 KM) SOUTHWEST OF SPRINGFIELD AND 5.5 MI (8.9 KM) NORTH OF GRAFTON. TO REACH FROM THE JUNCTION OF VT ROUTE 103 AND VT ROUTE 11 (EAST) IN CHESTER PROCEED SOUTHEAST ON VT ROUTE 103 FOR .5 MI (0.8 KM) TO THE MARK ON THE RIGHT (WEST). THE MARK IS 64 FT (19.5 M) NORTHEAST OF THE NORTHEAST CORNER OF DIAMOND JIMS LOG CABIN RESTAURANT, 34.5 FT (10.5 M) WEST OF AND 1 FT (0.3 M) HIGHER THAN THE CENTERLINE OF ROUTE 103, 19 FT (5.8 M) SOUTH OF THE CENTERLINE OF THE NORTHERLY PAVED DRIVE ENTRANCE TO THE SAID RESTAURANT, 10 FT (3.0 M) NORTH OF THE NORTHEAST CORNER OF A PAVED PARKING LOT, AND 6.2 FT (1.9 M) NORTHEAST OF UTILITY POLE NUMBER 79-1 AND A FIBERGLASS WITNESS POST.

TRAVERSE TIES



ALIGNMENT TIES



DATUM  
 VERTICAL NAVD 88  
 HORIZONTAL NAD83(92)  
 ADJUSTMENT COMPASS

NOT TO SCALE

**TIE SHEET #2**

PROJECT NAME: CHESTER-SPRINGFIELD-ROCKINGHAM-WINDSOR  
 PROJECT NUMBER: STP 2952(1)  
 FILE NAME: z13c5i8b1+02.dgn  
 PROJECT LEADER: D. GOZALKOWSKI  
 DESIGNED BY: A. HAWKINS  
 PLOT DATE: 3/27/2015  
 DRAWN BY: A. KIRBY  
 CHECKED BY: J. SHIELDS  
 SHEET 6 OF 309