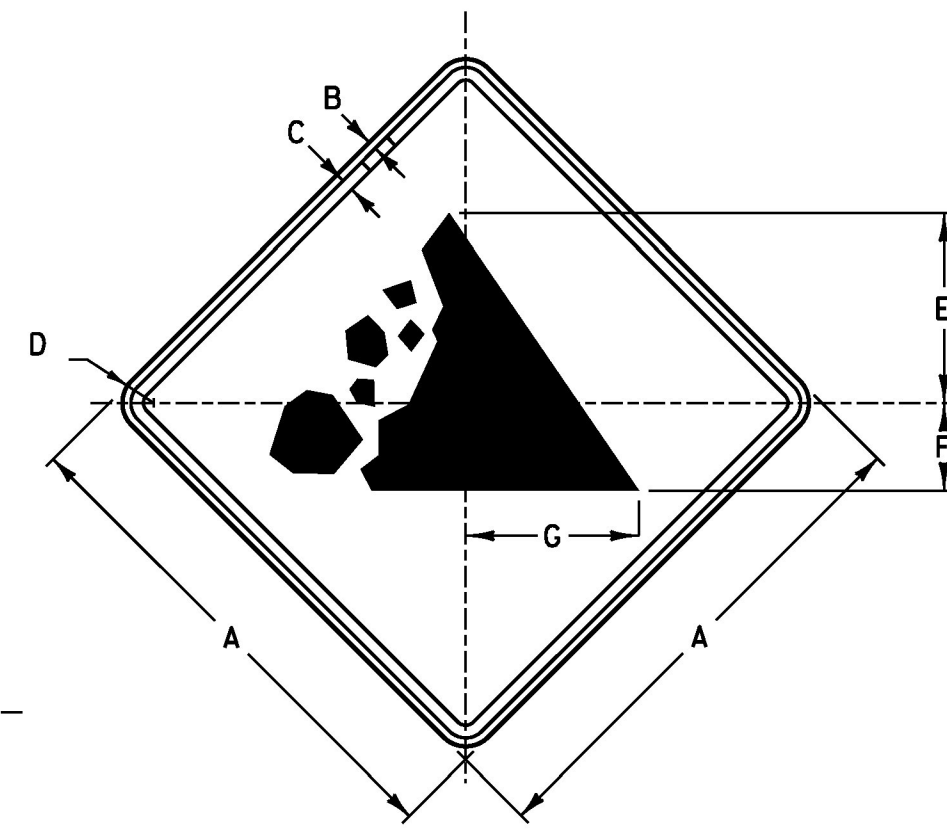
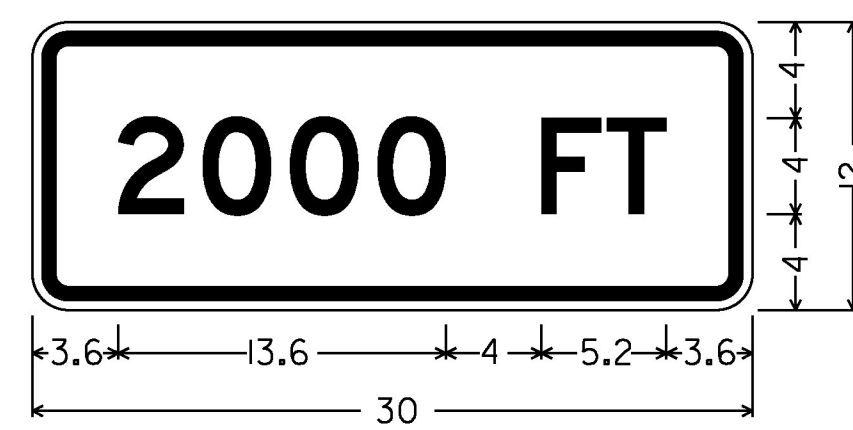


1 SQUARE = 1"



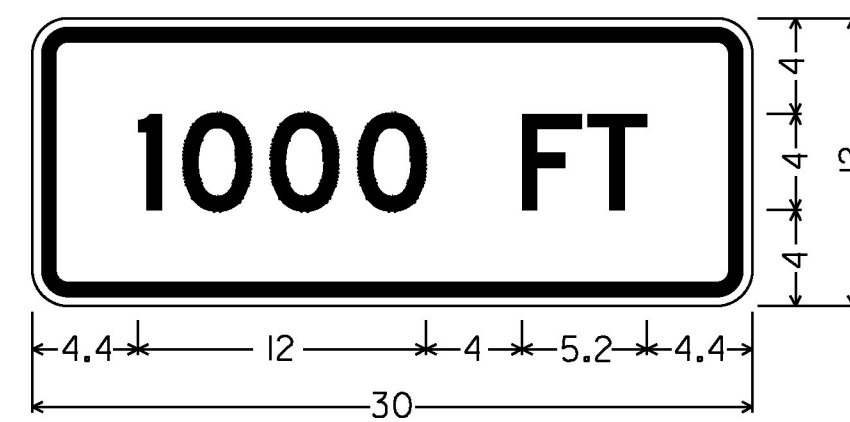
VW-285  
COLORS  
TEXT AND BORDER - BLACK (NON-REFL.)  
BACKGROUND - YELLOW (REFL.)

SIGN	DIMENSIONS (INCHES)						
	A	B	C	D	E	F	G
STD.	30	1/2	3/4	1/2	11/4	5/4	10 3/4
SPECIAL	48	3/4	1/4	3	18	8 3/8	16 1/2



1.5" Radius, 0.6" Border, 0.4" Indent,  
Black on Yellow:  
"2000 FT" D 2K

**W16-2aP**



1.5" Radius, 0.6" Border, 0.4" Indent,  
Black on Yellow:  
"1000 FT" D 2K

**W16-2aP**

**NOTES:**

**DESIGN**

LETTERS, DIGITS, ARROWS, SYMBOLS, SPACING, AND TEXT DIMENSIONS SHALL CONFORM WITH THE STANDARD HIGHWAY SIGN BOOK AND DESIGNS PRESCRIBED IN THE MANUAL OF UNIFORM TRAFFIC CONTROL DEVICES (MUTCD) ADOPTED BY THE U.S. DEPARTMENT OF TRANSPORTATION, FEDERAL HIGHWAY ADMINISTRATION (FHWA).

**MATERIALS**

THE SIGN BASE MATERIALS USED FOR THESE WARNING SIGNS SHALL BE 0.080" FLAT SHEET ALUMINUM.

**REFLECTORIZATION**

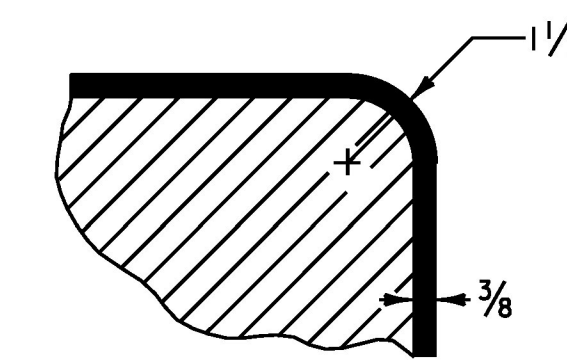
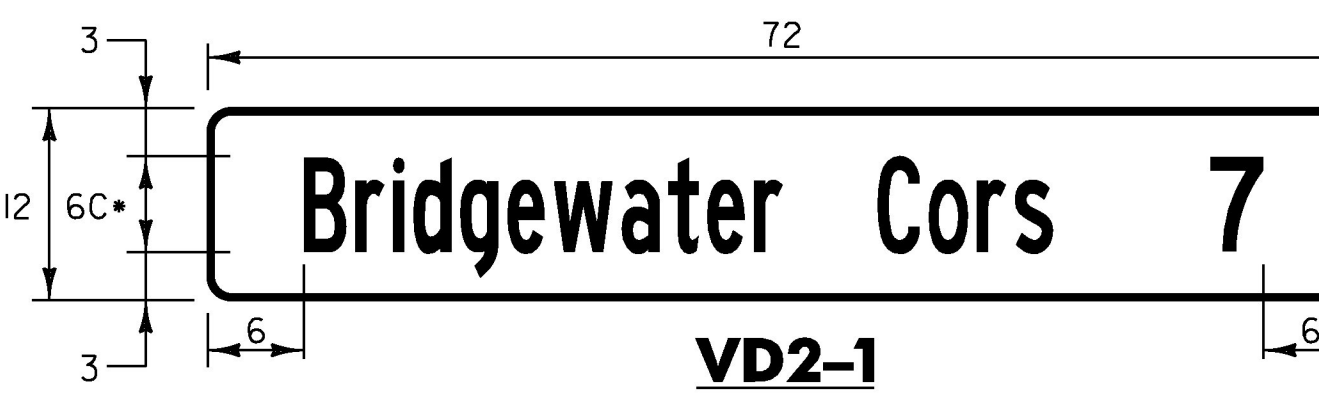
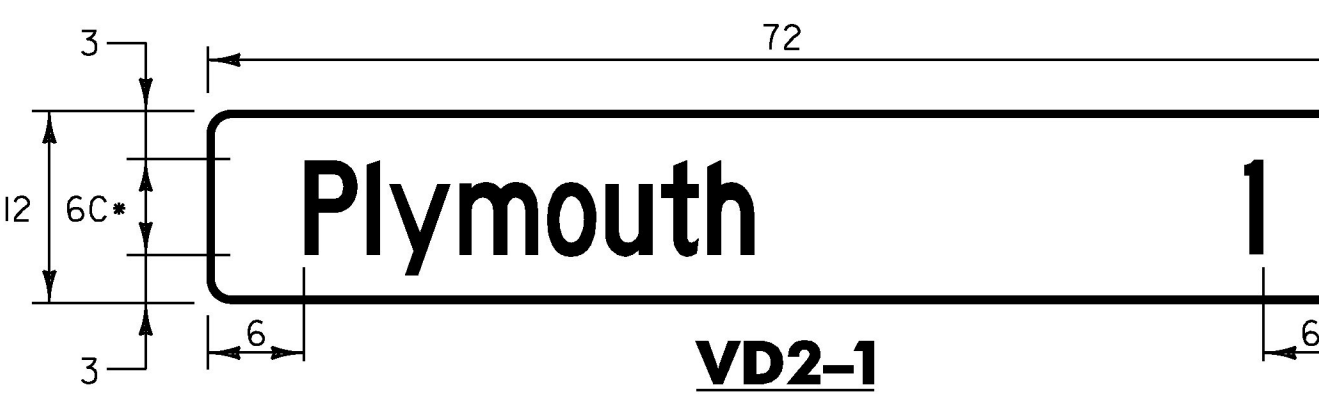
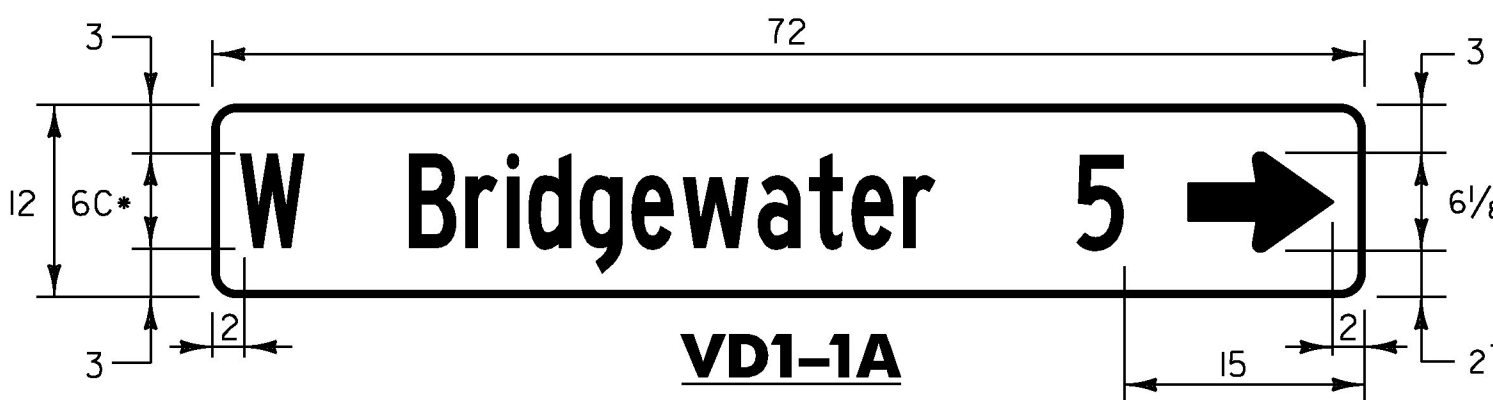
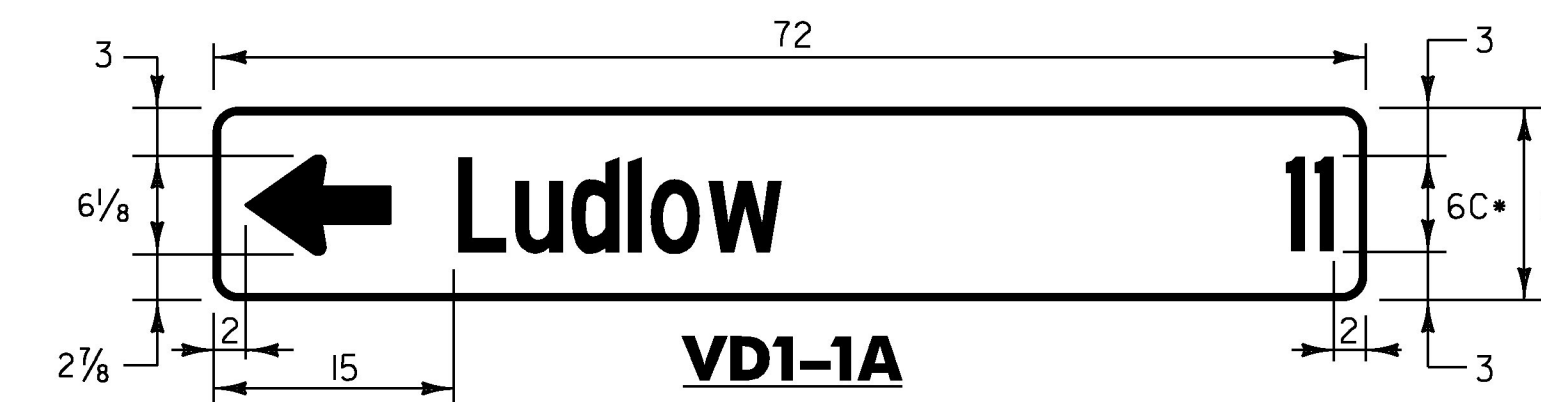
THE BACKGROUND RETROREFLECTIVE SHEETING MATERIAL SHALL BE APPLIED TO THE ENTIRE SIGN. THE TEXT, BORDERS, AND SYMBOLS SHALL BE LETTERING FILM OR SILK SCREENED. SEE STANDARD SHEET T-2.

**COLORS**

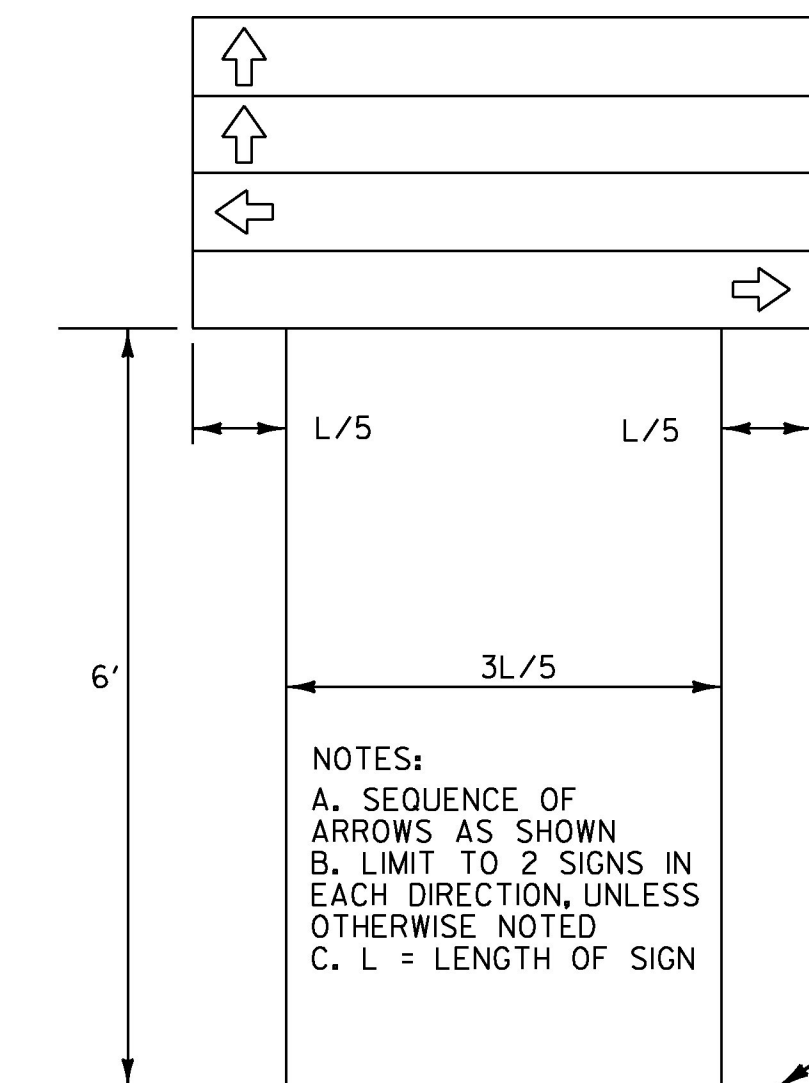
WARNING SIGNS SHALL HAVE BLACK TEXT, BORDERS, AND SYMBOLS ON RETROREFLECTIVE YELLOW BACKGROUND. COLOR SHALL CONFORM TO THE COLORS ADOPTED BY AASHTO AND APPROVED BY FHWA SPECIFICATIONS. WARNING SIGNS SHALL MEET THE VERMONT STANDARD SPECIFICATIONS.

**SPECIFICATIONS**

WARNING SIGNS SHALL MEET THE VERMONT STANDARD SPECIFICATIONS FOR CONSTRUCTION "TRAFFIC SIGNS" AND STANDARD SHEET T-2

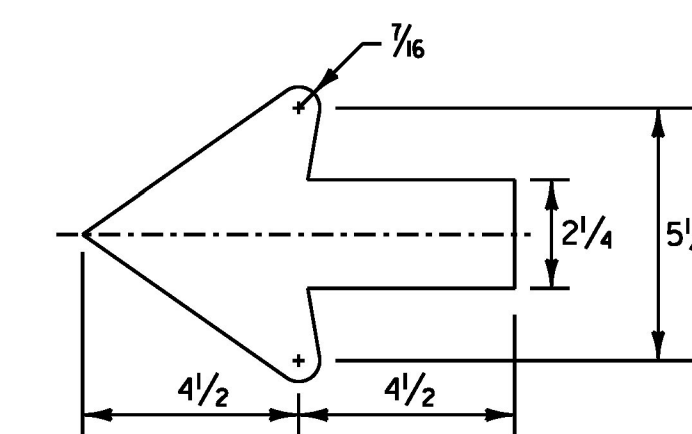


**BORDER DETAIL**  
TRIM CORNERS



NOTES:  
A. SEQUENCE OF ARROWS AS SHOWN  
B. LIMIT TO 2 SIGNS IN EACH DIRECTION, UNLESS OTHERWISE NOTED  
C. L = LENGTH OF SIGN

**DESTINATION ASSEMBLY**



**STANDARD SHSM 2.25" ARROW**

• SEE NOTE 2 BELOW:

**STANDARD DESTINATION SIGN NOTES**  
**VD1-1, VD1-1A, VD2-1**

1.) THE DESTINATION SIGNS SHOWN ON THIS SHEET SHALL HAVE WHITE RETROREFLECTIVE ASTM TYPE III OR IV TEXT, ARROWS AND BORDERS ON A GREEN RETROREFLECTIVE ASTM TYPE III OR IV BACKGROUND.

2.) USE THE LARGEST LETTER / THICKEST FONT AVAILABLE THAT WILL SATISFY THE MINIMUM SPACING REQUIREMENTS, AS SHOWN IN THE DETAILS ABOVE; I.E. IF A 6" SERIES C LETTER DOES NOT WORK, DUE TO THE LENGTH OF THE WORD, USE A 6" SERIES B LETTER. IF A 6" SERIES B LETTER DOES NOT WORK, USE A 5" SERIES C. USE NO LESS THAN 80% KERNING.



PROJECT NAME: PLYMOUTH	PLOT DATE: 5/17/2016
PROJECT NUMBER: ER 0149(6)	DRAWN BY: J. SANTACRUCE
FILE NAME: z13c318sd+.dgn	CHECKED BY: B. COLBURN
PROJECT LEADER: J. SANTACRUCE	SHEET 51 OF 68
DESIGNED BY: J. SANTACRUCE	
SIGN DETAIL SHEET	