

TEMPORARY STONE CHECK DAM, TYPE I  
STA 5+25, RT TO STA 10+75, RT

EROSION LOG

STA 5+25, LT TO STA 5+96, LT  
STA 9+58, RT TO STA 10+75, RT

PROJECT DEMARCATION FENCE

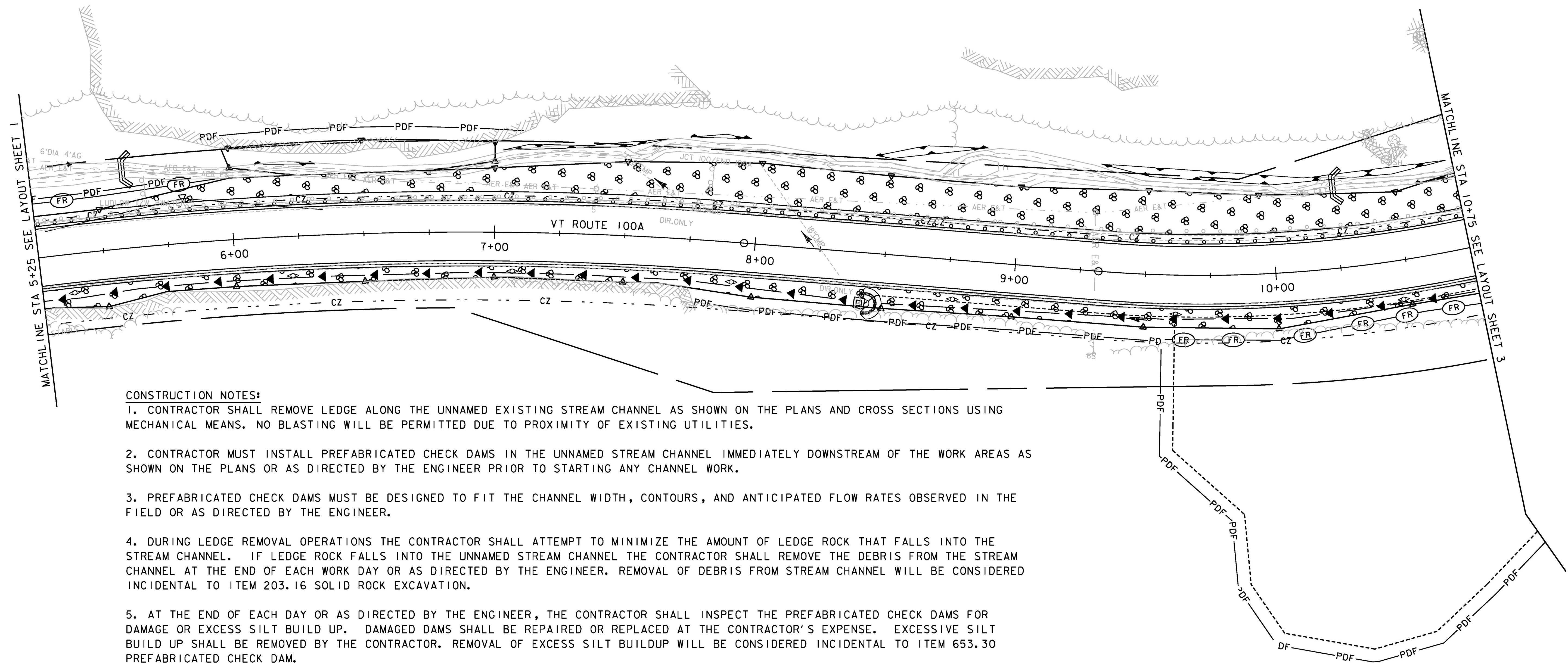
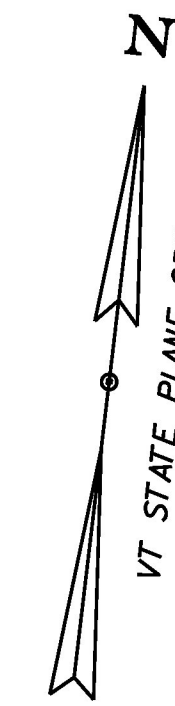
STA 5+90, LT TO STA 7+00, LT  
STA 7+75, RT TO STA 10+75, RT

INLET PROTECTION DEVICE, TYPE I

STA 8+41, RT

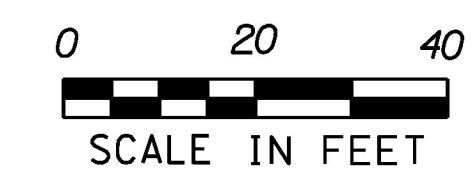
PREFABRICATED CHECK DAM

STA 5+60.0, LT  
STA 10+25.0, LT



CONSTRUCTION NOTES:

1. CONTRACTOR SHALL REMOVE LEDGE ALONG THE UNNAMED EXISTING STREAM CHANNEL AS SHOWN ON THE PLANS AND CROSS SECTIONS USING MECHANICAL MEANS. NO BLASTING WILL BE PERMITTED DUE TO PROXIMITY OF EXISTING UTILITIES.
2. CONTRACTOR MUST INSTALL PREFABRICATED CHECK DAMS IN THE UNNAMED STREAM CHANNEL IMMEDIATELY DOWNSTREAM OF THE WORK AREAS AS SHOWN ON THE PLANS OR AS DIRECTED BY THE ENGINEER PRIOR TO STARTING ANY CHANNEL WORK.
3. PREFABRICATED CHECK DAMS MUST BE DESIGNED TO FIT THE CHANNEL WIDTH, CONTOURS, AND ANTICIPATED FLOW RATES OBSERVED IN THE FIELD OR AS DIRECTED BY THE ENGINEER.
4. DURING LEDGE REMOVAL OPERATIONS THE CONTRACTOR SHALL ATTEMPT TO MINIMIZE THE AMOUNT OF LEDGE ROCK THAT FALLS INTO THE STREAM CHANNEL. IF LEDGE ROCK FALLS INTO THE UNNAMED STREAM CHANNEL THE CONTRACTOR SHALL REMOVE THE DEBRIS FROM THE STREAM CHANNEL AT THE END OF EACH WORK DAY OR AS DIRECTED BY THE ENGINEER. REMOVAL OF DEBRIS FROM STREAM CHANNEL WILL BE CONSIDERED INCIDENTAL TO ITEM 203.16 SOLID ROCK EXCAVATION.
5. AT THE END OF EACH DAY OR AS DIRECTED BY THE ENGINEER, THE CONTRACTOR SHALL INSPECT THE PREFABRICATED CHECK DAMS FOR DAMAGE OR EXCESS SILT BUILD UP. DAMAGED DAMS SHALL BE REPAIRED OR REPLACED AT THE CONTRACTOR'S EXPENSE. EXCESSIVE SILT BUILD UP SHALL BE REMOVED BY THE CONTRACTOR. REMOVAL OF EXCESS SILT BUILDUP WILL BE CONSIDERED INCIDENTAL TO ITEM 653.30 PREFABRICATED CHECK DAM.
6. CONTRACTOR SHALL PROPERLY DISPOSE OF ALL ACCUMULATED SILT MATERIAL REMOVED FROM BEHIND THE PREFABRICATED CHECK DAMS IN CONFORMANCE WITH VERMONT WATER QUALITY STANDARDS. COST TO DISPOSE OF SILT MATERIAL WILL BE CONSIDERED INCIDENTAL TO ITEM 653.30 PREFABRICATED CHECK DAM.
7. CONTRACTOR MAY PROPOSE AN ALTERNATE LEDGE REMOVAL PROCEDURE TO THE RESIDENT ENGINEER. ALL WORK PROPOSED WILL BE PAID UNDER ITEM 203.16 SOLID ROCK EXCAVATION OR APPROPRIATE EROSION PREVENTION AND SEDIMENT CONTROL ITEMS.



PROJECT NAME: PLYMOUTH	PLOT DATE: 5/17/2016
PROJECT NUMBER: ER 0149(6)	DRAWN BY: M. LOVETT
FILE NAME: z13c318bdr_ero.dgn	CHECKED BY: B. COLBURN
PROJECT LEADER: J.SANTACRUCE	SHEET 40 OF 68
DESIGNED BY: M. HASKINS	
EPSC CONSTRUCTION LAYOUT SHEET 2	