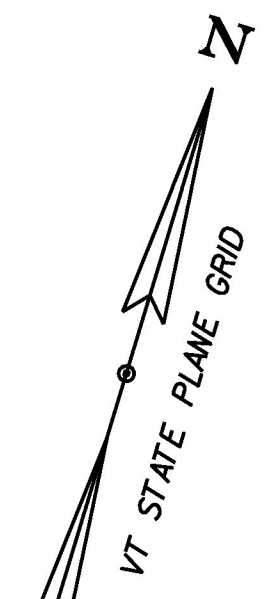
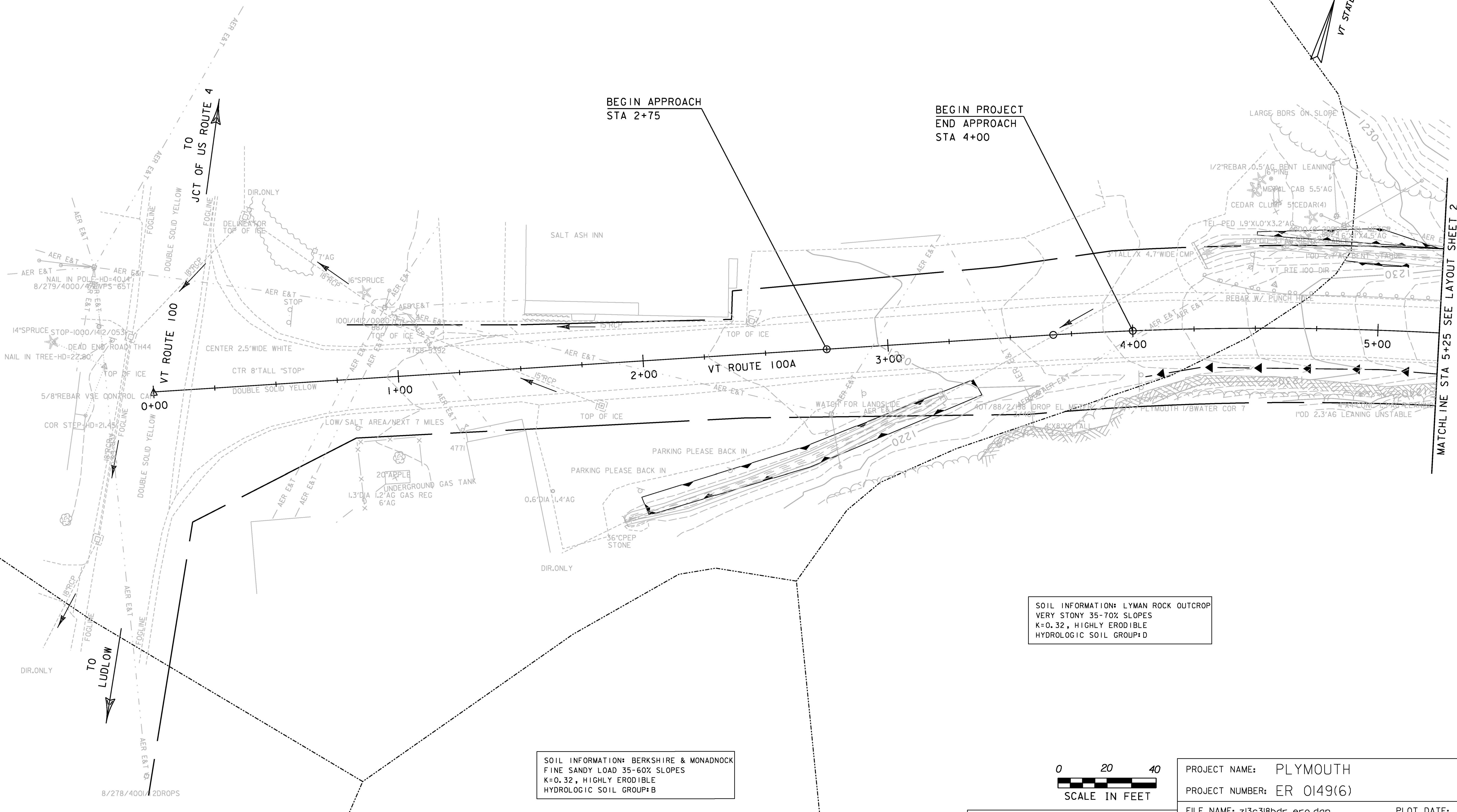


SOIL INFORMATION: COLTON FINE SANDY LOAM 3-8% SLOPES
K=0.15, POTENTIALLY HIGHLY ERODIBLE
HYDROLOGIC SOIL GROUP: A



BEGIN APPROACH
STA 2+75

BEGIN PROJECT
END APPROACH
STA 4+00



MATCH LINE STA 5+25 SEE LAYOUT SHEET 2

SOIL INFORMATION: BERKSHIRE & MONADNOCK
FINE SANDY LOAM 35-60% SLOPES
K=0.32, HIGHLY ERODIBLE
HYDROLOGIC SOIL GROUP: B

SOIL INFORMATION: LYMAN ROCK OUTCROP
VERY STONY 35-70% SLOPES
K=0.32, HIGHLY ERODIBLE
HYDROLOGIC SOIL GROUP: D



PROJECT NAME: PLYMOUTH	PLOT DATE: 5/17/2016
PROJECT NUMBER: ER 0149(6)	DRAWN BY: M. LOVETT
FILE NAME: z13c318bdr_ero.dgn	CHECKED BY: B. COLBURN
PROJECT LEADER: J. SANTACRUCE	SHEET 35 OF 68
DESIGNED BY: M. HASKINS	
EPSC EXISTING LAYOUT SHEET 1	