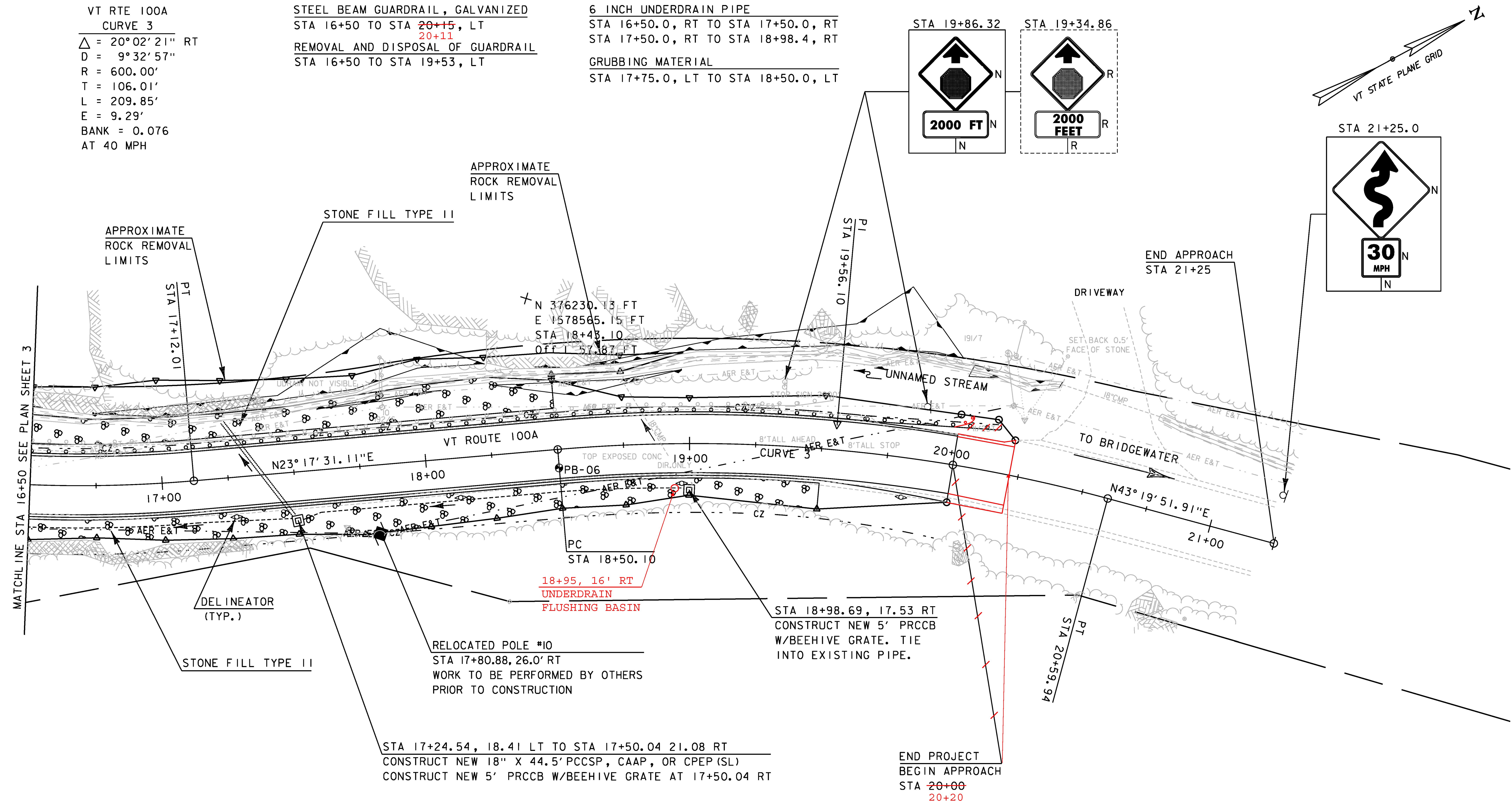


VT RTE 100A
 CURVE 3
 $\Delta = 20^{\circ}02'21''$ RT
 $D = 9^{\circ}32'57''$
 $R = 600.00'$
 $T = 106.01'$
 $L = 209.85'$
 $E = 9.29'$
 $BANK = 0.076$
 AT 40 MPH

STEEL BEAM GUARDRAIL, GALVANIZED
 STA 16+50 TO STA 20+15, LT
 20+11
 REMOVAL AND DISPOSAL OF GUARDRAIL
 STA 16+50 TO STA 19+53, LT

6 INCH UNDERDRAIN PIPE
 STA 16+50.0, RT TO STA 17+50.0, RT
 STA 17+50.0, RT TO STA 18+98.4, RT
 GRUBBING MATERIAL
 STA 17+75.0, LT TO STA 18+50.0, LT

REMOVE SIGNS: 2



DURABLE 4" YELLOW LINE, POLYUREA
 (ALL LINES SHALL INCLUDE C BREAKS FOR SIDEROADS)
 STA 16+50, LT TO STA 20+00, LT (SOLID)
 STA 16+50, RT TO STA 20+00, RT (SOLID)

DURABLE 4" WHITE LINE, POLYUREA
 (ALL LINES SHALL INCLUDE EDGE LINE BREAKS
 AND RADII FOR SIDEROADS)
 STA 16+50, LT TO STA 20+00, LT (SOLID)
 STA 16+50, RT TO STA 20+00, RT (SOLID)

SIGN LEGEND
 R = REMOVE
 S = SALVAGE
 N = NEW
 RET = RETAIN
 B-B = BACK TO BACK
 EXISTING - - - - -
 NEW - - - - -



McFarland Johnson

PROJECT NAME: PLYMOUTH
 PROJECT NUMBER: ER 0149(6)
 FILE NAME: z13c318bdr.dgn
 PROJECT LEADER: J. SANTACRUZE
 DESIGNED BY: M. HASKINS
 PLAN SHEET 4
 PLOT DATE: 5/17/2016
 DRAWN BY: M. LOVETT
 CHECKED BY: B. COLBURN
 SHEET 25 OF 68