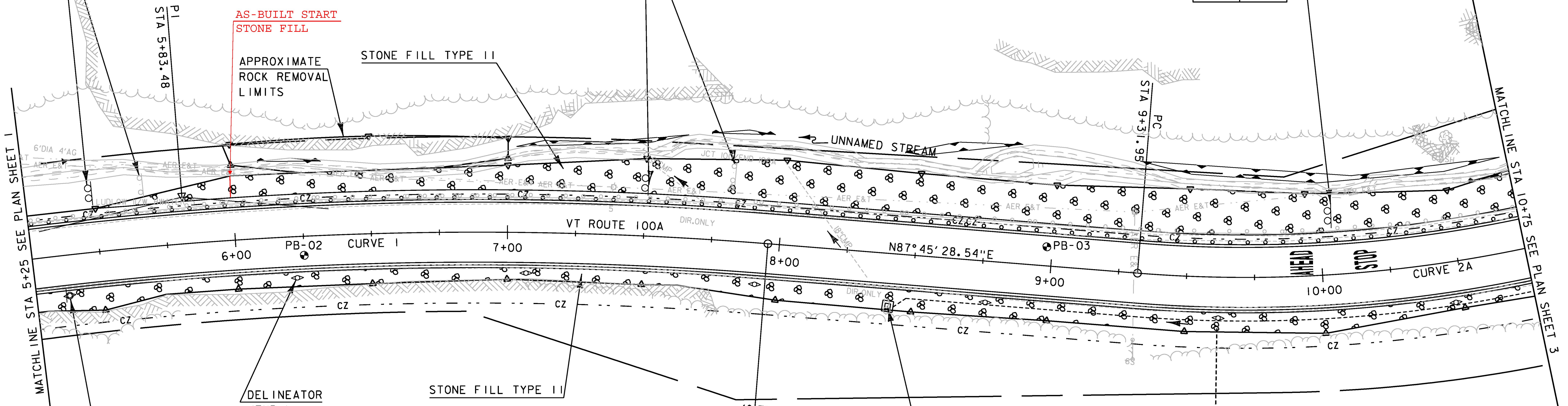
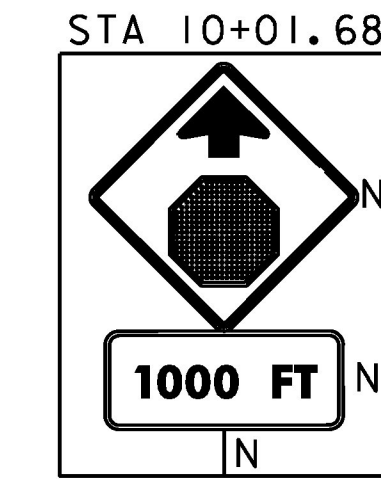
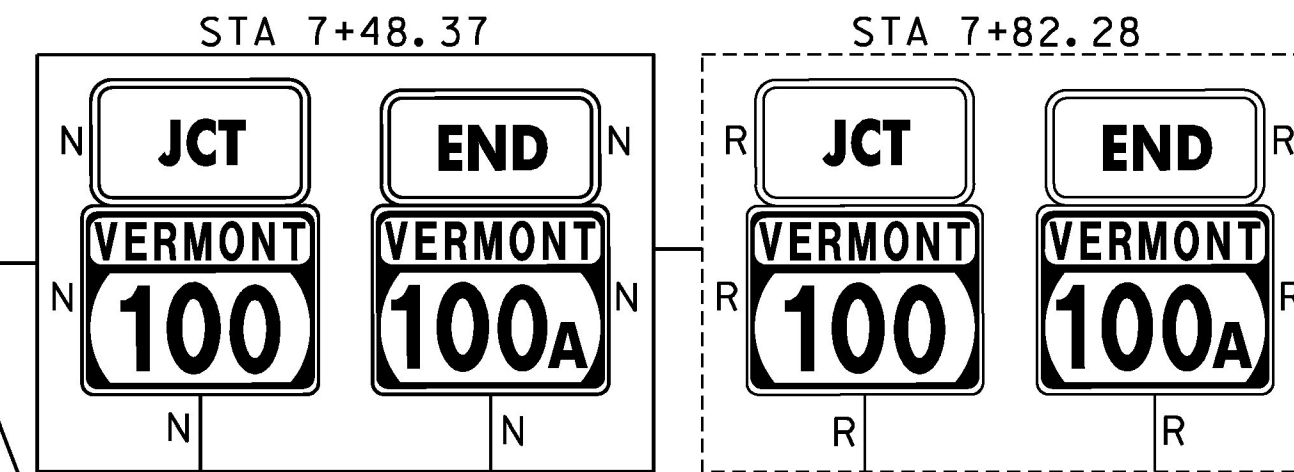
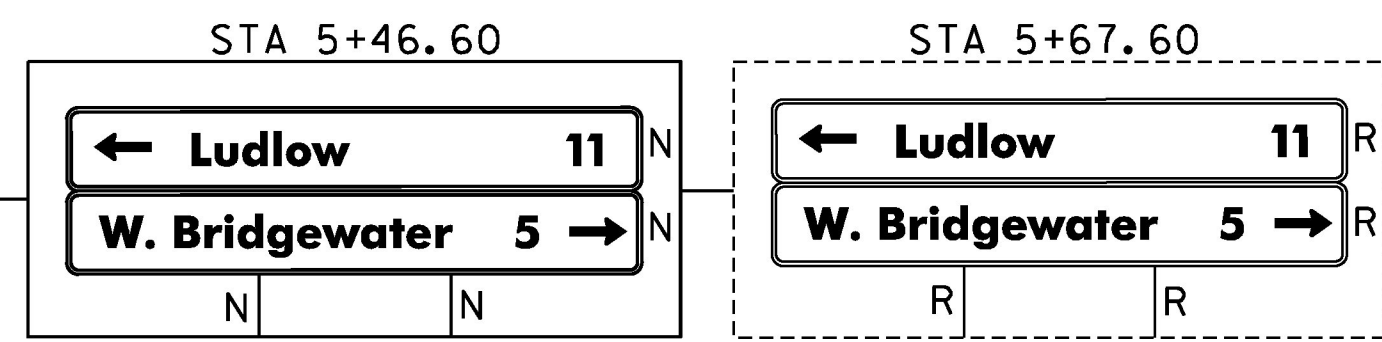
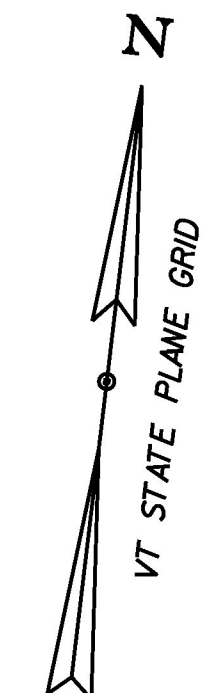


STEEL BEAM GUARDRAIL, GALVANIZED  
 STA 5+25 TO STA 10+75, LT  
 REMOVAL AND DISPOSAL OF GUARDRAIL  
 STA 5+25 TO STA 10+75, LT  
 6 INCH UNDERDRAIN PIPE  
 STA 8+41.4, RT TO STA 10+75.0, RT

GRUBBING MATERIAL  
 STA 7+00.0, LT TO STA 9+00.0, LT

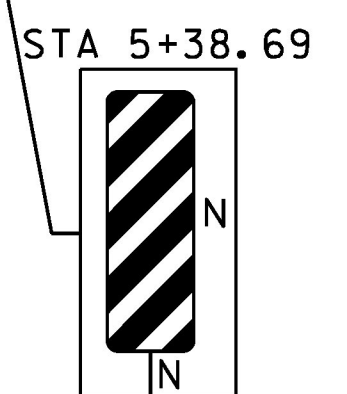
REMOVE SIGNS: 6

VT RTE 100A  
 CURVE 2A  
 $\Delta = 33^{\circ}37'02''$  LT  
 $D = 11^{\circ}27'33''$   
 $R = 500.00'$   
 $T = 151.04'$   
 $L = 293.36'$   
 $E = 22.32'$   
 BANK = 0.080  
 AT 40 MPH



MATCHLINE STA 5+25 SEE PLAN SHEET 1

MATCHLINE STA 10+75 SEE PLAN SHEET 3



VT RTE 100A  
 CURVE 1  
 $\Delta = 18^{\circ}10'27''$  RT  
 $D = 4^{\circ}14'39''$   
 $R = 1350.00'$   
 $T = 215.92'$   
 $L = 428.22'$   
 $E = 17.16'$   
 BANK = 0.066

**DURABLE LETTER AND SYMBOL, POLYUREA**  
 STA 9+86, LT (AHEAD)  
 STA 10+26, LT (STOP)

**DURABLE 4" YELLOW LINE, POLYUREA**  
 (ALL LINES SHALL INCLUDE  $\frac{1}{4}$  BREAKS FOR SIDEROADS)  
 STA 5+25, LT TO STA 10+75, LT (SOLID)  
 STA 5+25, RT TO STA 10+75, RT (SOLID)

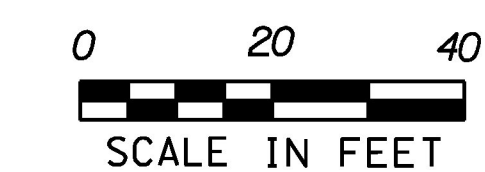
**DURABLE 4" WHITE LINE, POLYUREA**  
 (ALL LINES SHALL INCLUDE EDGE LINE BREAKS AND RADII FOR SIDEROADS)  
 STA 5+25, LT TO STA 10+75, LT (SOLID)  
 STA 5+25, RT TO STA 10+75, RT (SOLID)

**SIGN LEGEND**  
 R = REMOVE  
 S = SALVAGE  
 N = NEW  
 RET = RETAIN  
 B-B = BACK TO BACK  
 EXISTING - - - - -  
 NEW - - - - -

STA 8+41.39, 19.37 RT  
 CONSTRUCT NEW 5' PRCCB  
 W/BEEHIVE GRATE. TIE  
 INTO EXISTING PIPE.

WEST SLIDE

APPROXIMATE LIMITS  
 OF SLOPE STABILIZATION  
 (SEE SLOPE STABILITY  
 PLANS FOR MORE INFORMATION)



PROJECT NAME: PLYMOUTH  
 PROJECT NUMBER: ER 0149(6)  
 FILE NAME: z13c318bdr.dgn  
 PROJECT LEADER: J. SANTACRUCE  
 DESIGNED BY: M. HASKINS  
 PLAN SHEET 2

PLOT DATE: 5/17/2016  
 DRAWN BY: M. LOVETT  
 CHECKED BY: B. COLBURN  
 SHEET 23 OF 68