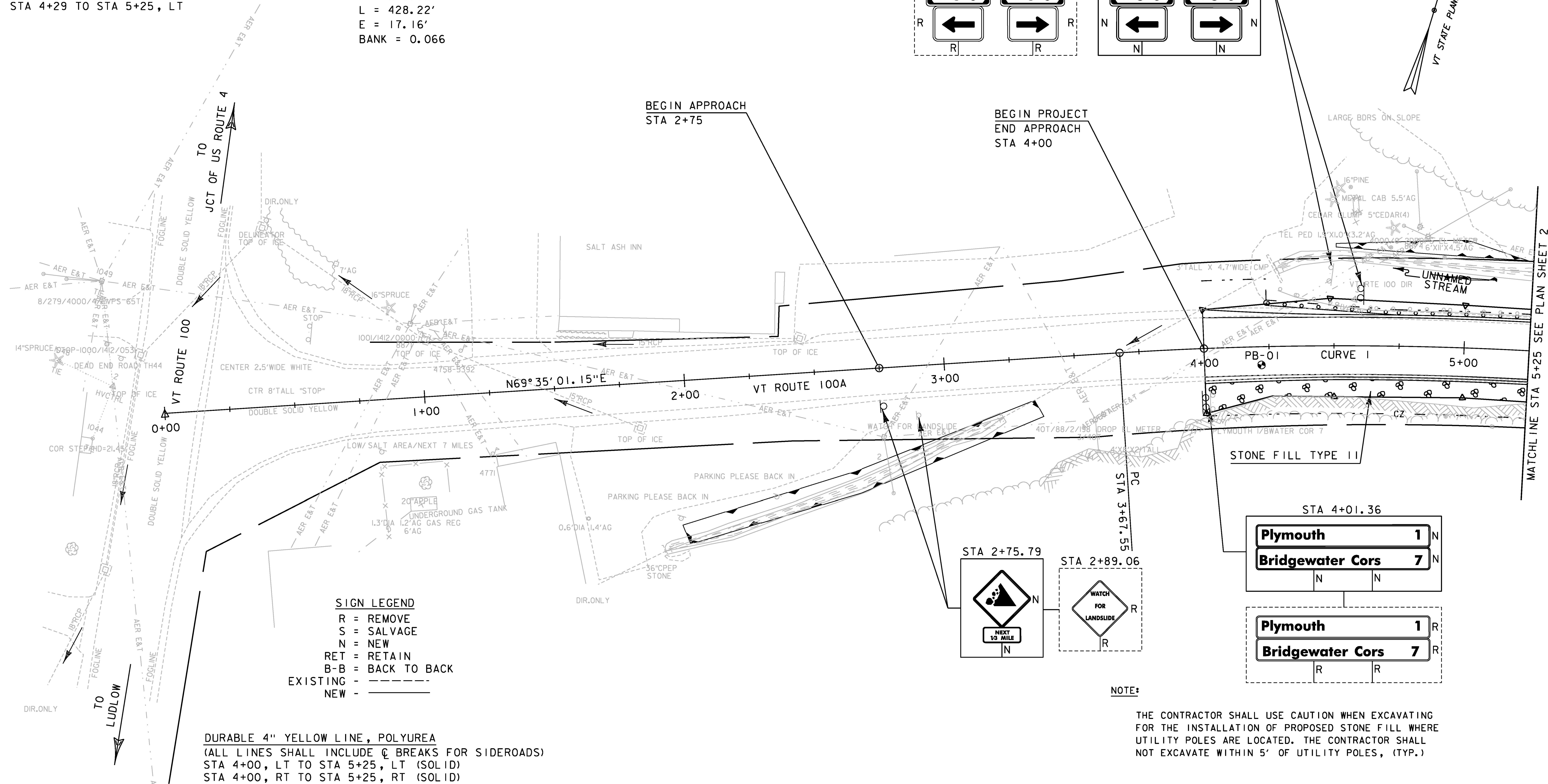
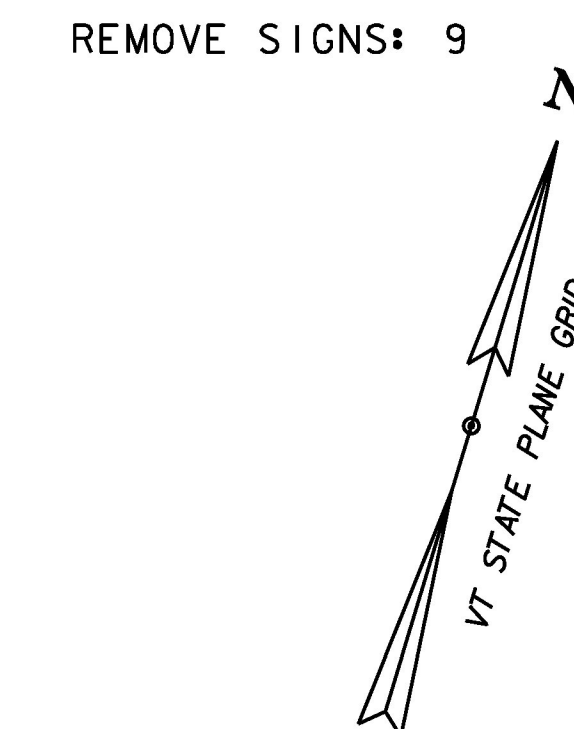
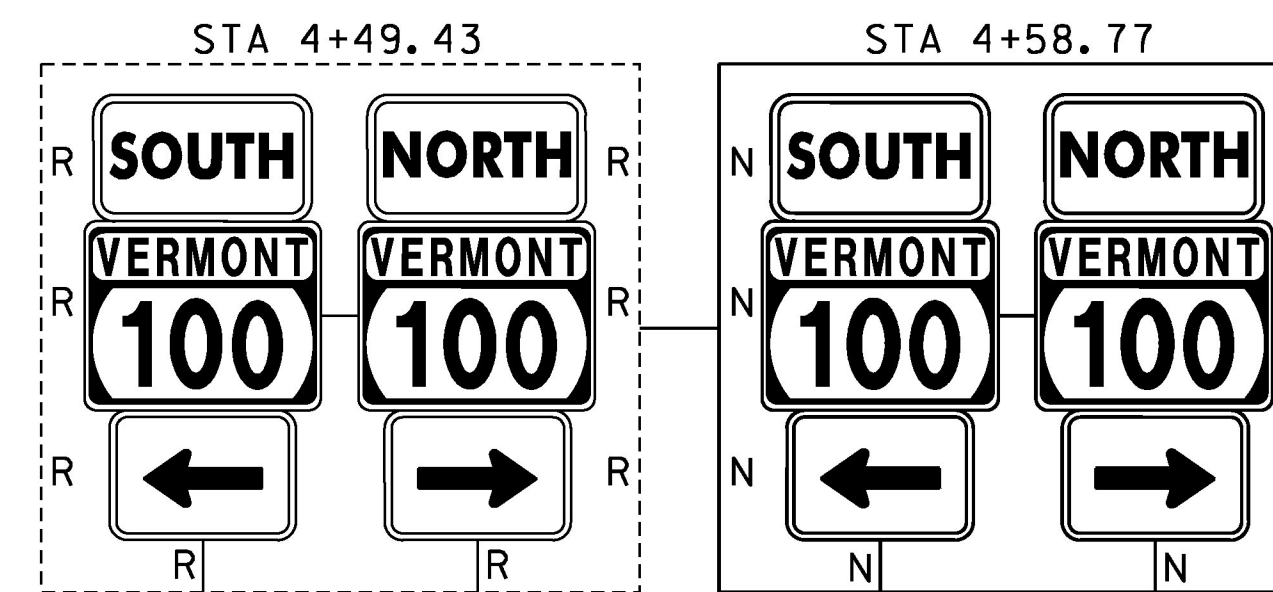


STEEL BEAM GUARDRAIL, GALVANIZED
 STA 4+23 TO STA 5+25, LT

REMOVAL AND DISPOSAL OF GUARDRAIL
 STA 4+29 TO STA 5+25, LT

VT RTE 100A
 CURVE 1

$\Delta = 18^\circ 10' 27''$ RT
 $D = 4^\circ 14' 39''$
 $R = 1350.00'$
 $T = 215.92'$
 $L = 428.22'$
 $E = 17.16'$
 $BANK = 0.066$



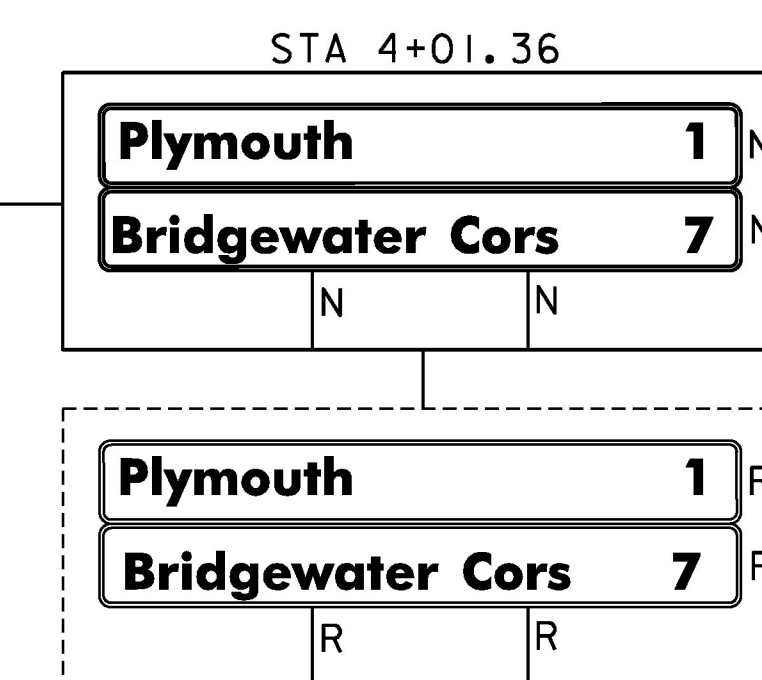
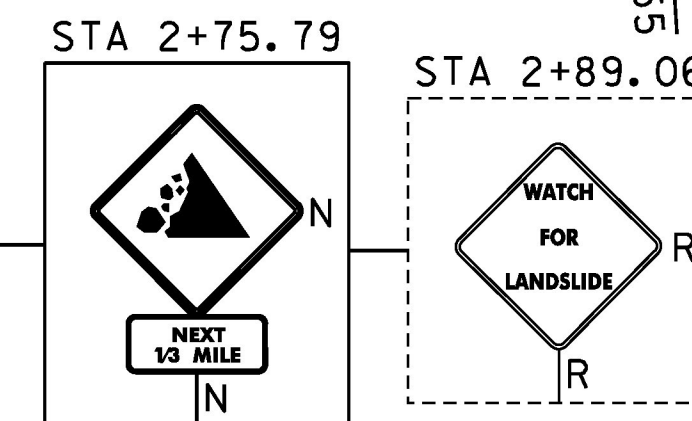
SIGN LEGEND

R = REMOVE
 S = SALVAGE
 N = NEW
 RET = RETAIN
 B-B = BACK TO BACK

EXISTING - - - - -
 NEW - - - - -

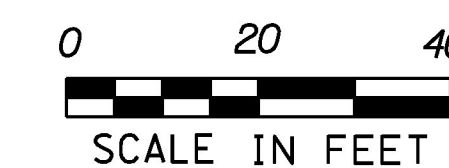
DURABLE 4" YELLOW LINE, POLYUREA
 (ALL LINES SHALL INCLUDE \odot BREAKS FOR SIDEROADS)
 STA 4+00, LT TO STA 5+25, LT (SOLID)
 STA 4+00, RT TO STA 5+25, RT (SOLID)

DURABLE 4" WHITE LINE, POLYUREA
 (ALL LINES SHALL INCLUDE EDGE LINE BREAKS
 AND RADI FOR SIDEROADS)
 STA 4+00, LT TO STA 5+25, LT (SOLID)
 STA 4+00, RT TO STA 5+25, RT (SOLID)



NOTE:

THE CONTRACTOR SHALL USE CAUTION WHEN EXCAVATING FOR THE INSTALLATION OF PROPOSED STONE FILL WHERE UTILITY POLES ARE LOCATED. THE CONTRACTOR SHALL NOT EXCAVATE WITHIN 5' OF UTILITY POLES, (TYP.)



PROJECT NAME: PLYMOUTH
 PROJECT NUMBER: ER 0149(6)
 FILE NAME: z13c318bdr.dgn
 PROJECT LEADER: J. SANTACRUCE
 DESIGNED BY: M. HASKINS
 PLAN SHEET 1

PLOT DATE: 5/17/2016
 DRAWN BY: M. LOVETT
 CHECKED BY: B. COLBURN
 SHEET 22 OF 68