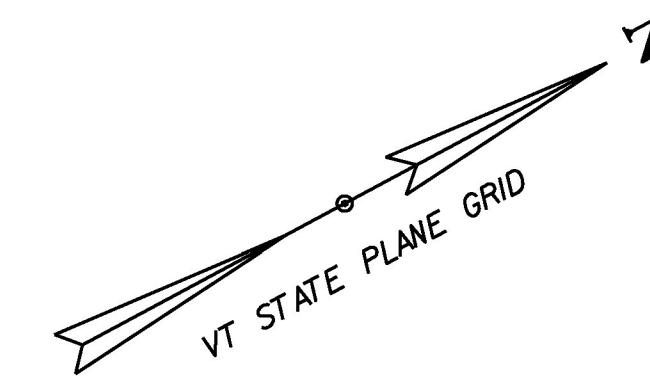


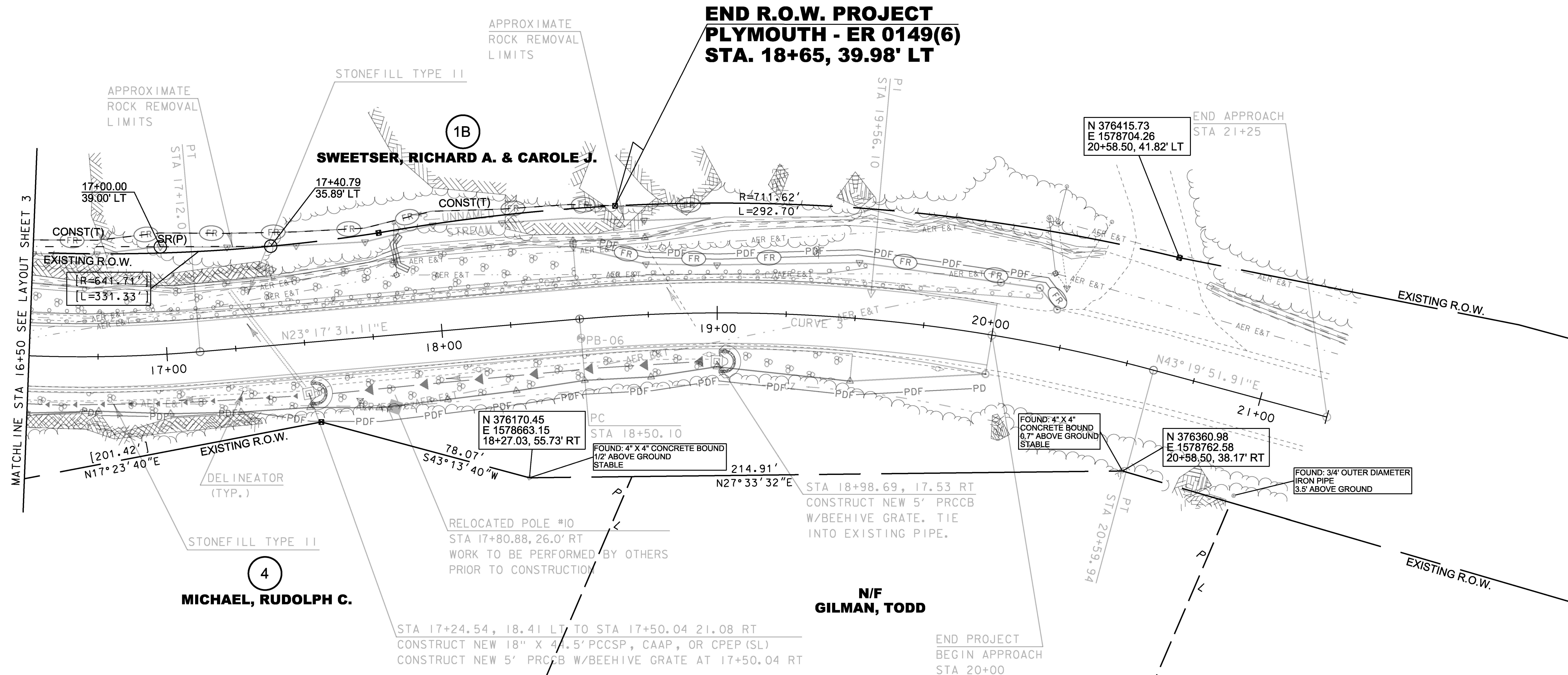
VT RTE 100A
 CURVE 3
 $\Delta = 20^{\circ}02'21''$
 $D = 9^{\circ}32'57''$
 $R = 600.00'$
 $T = 106.01'$
 $L = 209.85'$
 $E = 9.29'$

STEEL BEAM GUARDRAIL, GALVANIZED
 STA 16+50 TO STA 19+90, LT
 MANUFACTURED TERMINAL SECTION, FLARED
 STA 19+90 TO STA 20+15, LT
 REMOVAL AND DISPOSAL OF GUARDRAIL
 STA 16+50 TO STA 19+53, LT

6 INCH UNDERDRAIN PIPE
 STA 16+50.0, RT TO STA 17+50.0, RT
 STA 17+50.0, RT TO STA 18+98.4, RT
 GRUBBING MATERIAL
 STA 17+75.0, LT TO STA 18+50.0, LT



**END R.O.W. PROJECT
 PLYMOUTH - ER 0149(6)
 STA. 18+65, 39.98' LT**

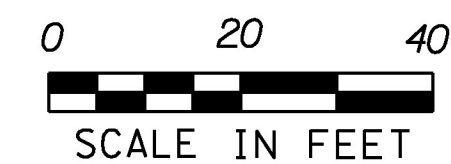


DURABLE 4" YELLOW LINE, POLYUREA
 (ALL LINES SHALL INCLUDE C BREAKS FOR SIDEROADS)
 STA 16+50, LT TO STA 20+00, LT (SOLID)
 STA 16+50, RT TO STA 20+00, RT (SOLID)

DURABLE 4" WHITE LINE, POLYUREA
 (ALL LINES SHALL INCLUDE EDGE LINE BREAKS
 AND RADII FOR SIDEROADS)
 STA 16+50, LT TO STA 20+00, LT (SOLID)
 STA 16+50, RT TO STA 20+00, RT (SOLID)

LINES SHOWN ON THIS PLAN AS EXISTING
 PROPERTY LINES P/L ARE BELIEVED TO
 BE ACCURATE BUT SHOULD NOT BE RELIED
 UPON FOR PURPOSES UNRELATED TO THE
 STATE OF VERMONT'S ACQUISITION OF LAND
 AND RIGHTS FOR THIS PROJECT.

**FOR R.O.W.
 USE ONLY**



PROJECT NAME: PLYMOUTH	PLOT DATE: 26-MAY-2015
PROJECT NUMBER: ER 0149(6)	DRAWN BY: A. EGIZI
FILE NAME: r13c318lay4.dgn	CHECKED BY: R. CLOUTIER
R.O.W. LAYOUT SHEET 4 OF 4	SHEET 21 OF 68