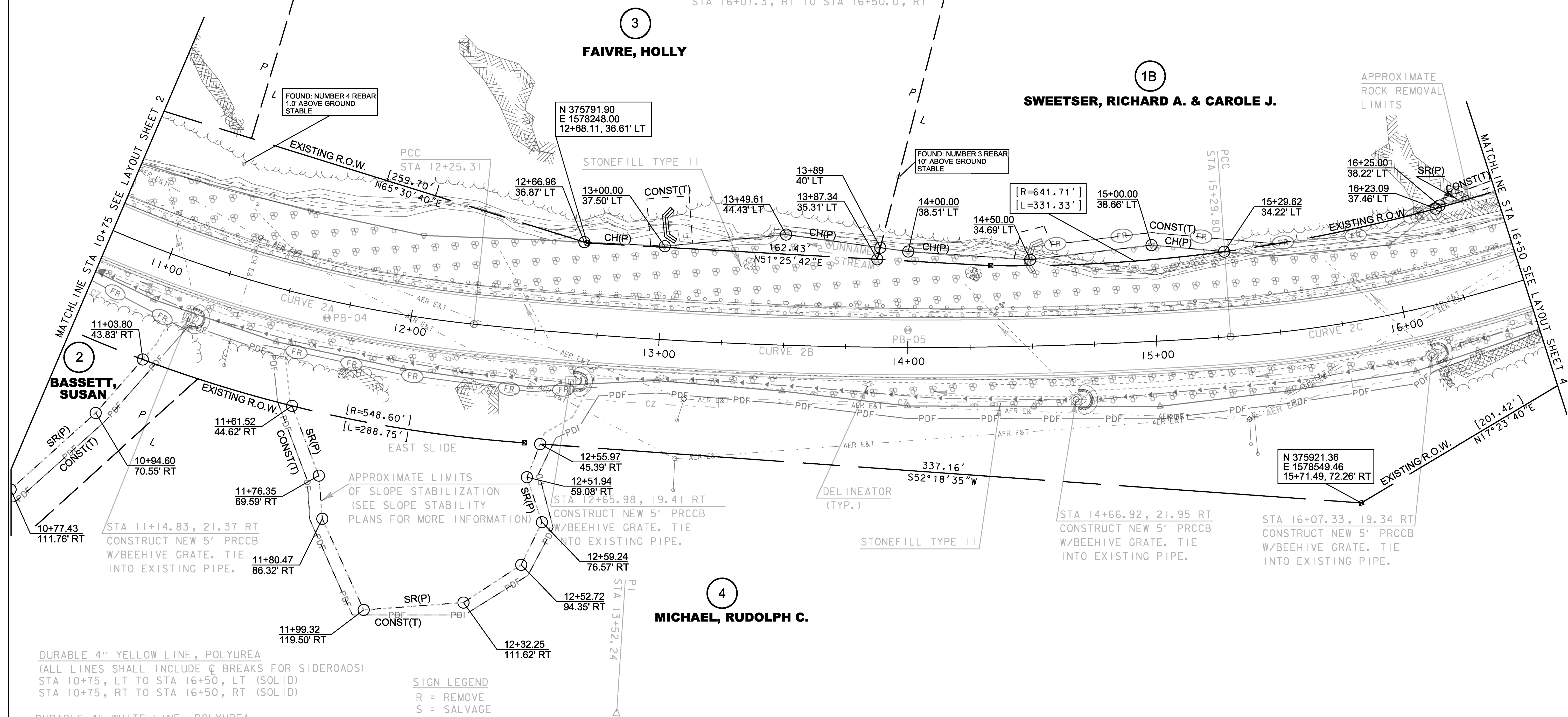
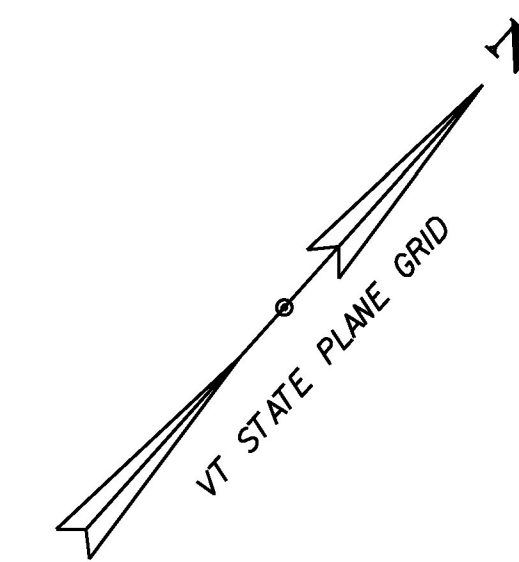


VT RTE 100A CURVE 2A	VT RTE 100A CURVE 2B	VT RTE 100A CURVE 2C
$\Delta = 33^\circ 37' 02''$	$\Delta = 09^\circ 58' 09''$	$\Delta = 20^\circ 52' 47''$
$D = 11^\circ 27' 33''$	$D = 3^\circ 16' 27''$	$D = 11^\circ 27' 33''$
$R = 500.00'$	$R = 1750.00'$	$R = 500.00'$
$T = 151.04'$	$T = 152.63'$	$T = 92.13'$
$L = 293.36'$	$L = 304.49'$	$L = 182.21'$
$E = 22.32'$	$E = 6.64'$	$E = 8.42'$

STEEL BEAM GUARDRAIL, GALVANIZED
STA 10+75 TO STA 16+50, LT

REMOVAL AND DISPOSAL OF GUARDRAIL
STA 10+75 TO STA 16+50, LT

6 INCH UNDERDRAIN PIPE
STA 10+75.0, RT TO STA 11+14.8, RT
STA 11+14.8, RT TO STA 12+65.9, RT
STA 12+66.0, RT TO STA 14+66.9, RT
STA 14+66.9, RT TO STA 16+07.3, RT
STA 16+07.3, RT TO STA 16+50.0, RT



DURABLE 4" YELLOW LINE, POLYUREA
(ALL LINES SHALL INCLUDE \odot BREAKS FOR SIDEROADS)
STA 10+75, LT TO STA 16+50, LT (SOLID)
STA 10+75, RT TO STA 16+50, RT (SOLID)

DURABLE 4" WHITE LINE, POLYUREA
(ALL LINES SHALL INCLUDE EDGE LINE BREAKS AND RADII FOR SIDEROADS)
STA 10+75, LT TO STA 16+50, LT (SOLID)
STA 10+75, RT TO STA 16+50, RT (SOLID)

SIGN LEGEND

R	= REMOVE
S	= SALVAGE
N	= NEW
RET	= RETAIN
B-B	= BACK TO BACK
EXISTING	- - - - -
NEW	—————

LINES SHOWN ON THIS PLAN AS EXISTING PROPERTY LINES P/L ARE BELIEVED TO BE ACCURATE BUT SHOULD NOT BE RELIED UPON FOR PURPOSES UNRELATED TO THE STATE OF VERMONT'S ACQUISITION OF LAND AND RIGHTS FOR THIS PROJECT.



FOR R.O.W. USE ONLY

PROJECT NAME: PLYMOUTH	PLOT DATE: 26-MAY-2015
PROJECT NUMBER: ER 0149(6)	DRAWN BY: A. EGIZI
FILE NAME: r13c318lay3.dgn	CHECKED BY: R. CLOUTIER
R.O.W. LAYOUT SHEET 3 OF 4	SHEET 20 OF 68