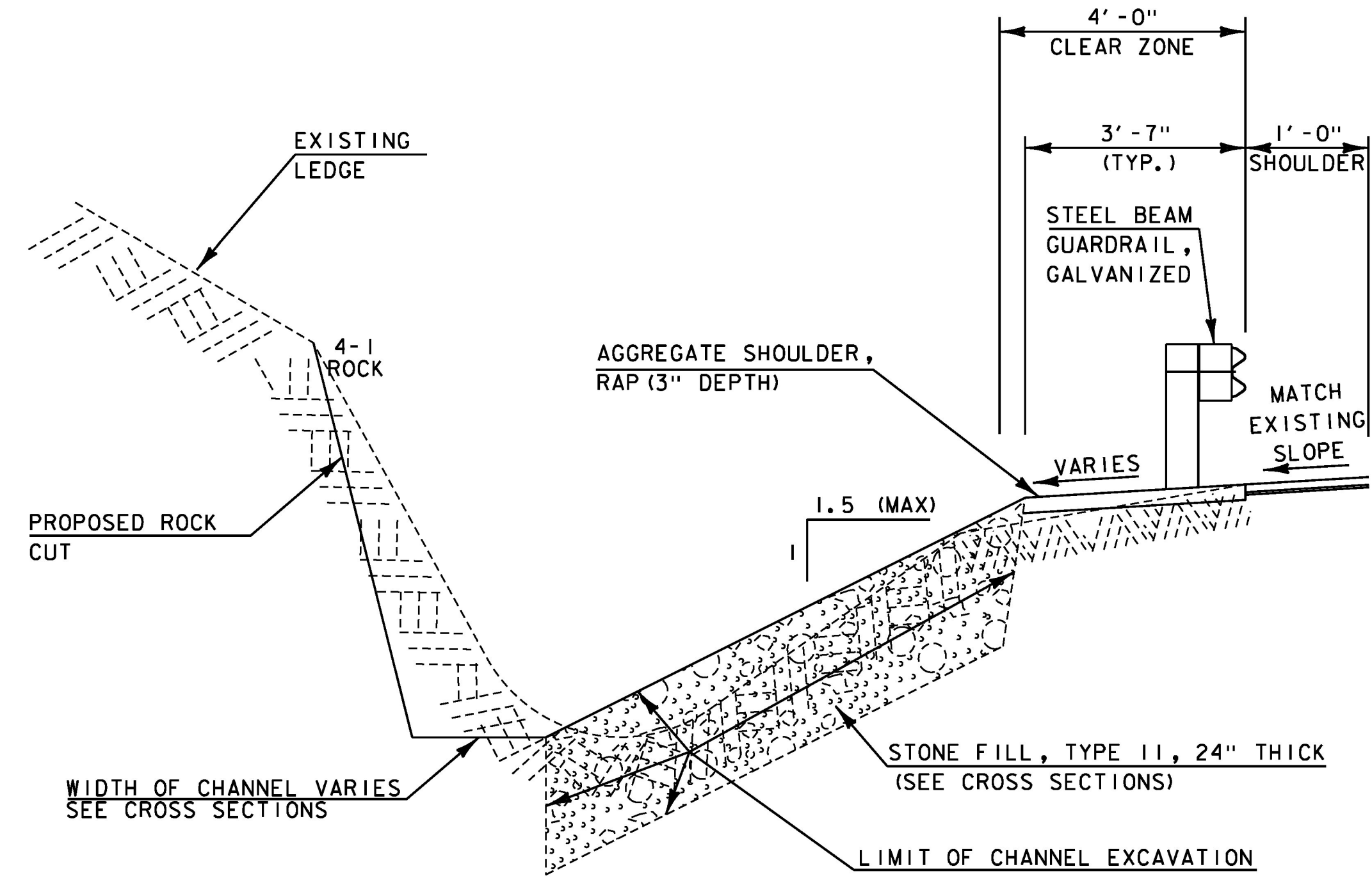
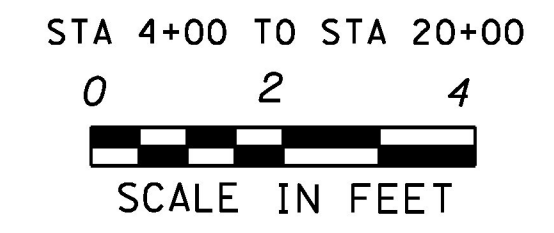
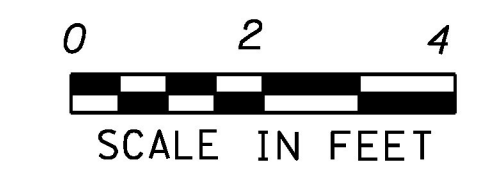


VT ROUTE 100A TYPICAL SECTION - COLD PLANE & OVERLAY



LEDGE CUT

STA 6+00 TO STA 7+00
STA 16+15 TO STA 18+75



MATERIAL TOLERANCES

SURFACE	TOTAL DEPTH
- PAVEMENT (TOTAL THICKNESS)	+/- 1/4"
- AGGREGATE SHOULDER, RAP	+/- 1/2"

NOTES:

- IF DAMAGE TO THE EXISTING PAVEMENT STRUCTURE BELOW THE 2" COLD PLANE OCCURS DUE TO HEAVY EQUIPMENT USE, THE CONTRACTOR SHALL MAKE REPAIRS AS REQUIRED BY THE ENGINEER AT THE CONTRACTOR'S EXPENSE AT NO ADDITIONAL COST TO THE STATE.
- USE 2" TOPSOIL ON SLOPES FLATTER THAN 1:3 BEHIND GUARDRAIL BETWEEN STATION 18+75 LT AND STATION 20+23 LT AND ON ALL SLOPES BETWEEN STATION 19+50 RT AND STATION 20+00 RT.
- ALL BITUMINOUS CONCRETE PAVEMENT WILL BE PAID UNDER ITEM 900.620 SPECIAL PROVISION (BITUMINOUS CONCRETE PAVEMENT, SMALL QUANTITY).
- EMULSIFIED ASPHALT SHALL BE APPLIED BETWEEN ALL PAVEMENT LAYERS AT A RATE OF 0.01 TO 0.03 GAL/CUBIC YARD AND WILL BE PAID FOR UNDER ITEM 404.65 EMULSIFIED ASPHALT OR ITEM 900.683 SPECIAL PROVISION (EMULSIFIED ASPHALT) (RS-1H OR CRS-1H)



PROJECT NAME: PLYMOUTH	PLOT DATE: 5/17/2016
PROJECT NUMBER: ER 0149(6)	DRAWN BY: M. LOVETT
FILE NAME: z13c318+yp1.dgn	CHECKED BY: B. COLBURN
PROJECT LEADER: J. SANTACRUCE	SHEET 4 OF 68
DESIGNED BY: M. HASKINS	
TYPICAL SECTION SHEET	