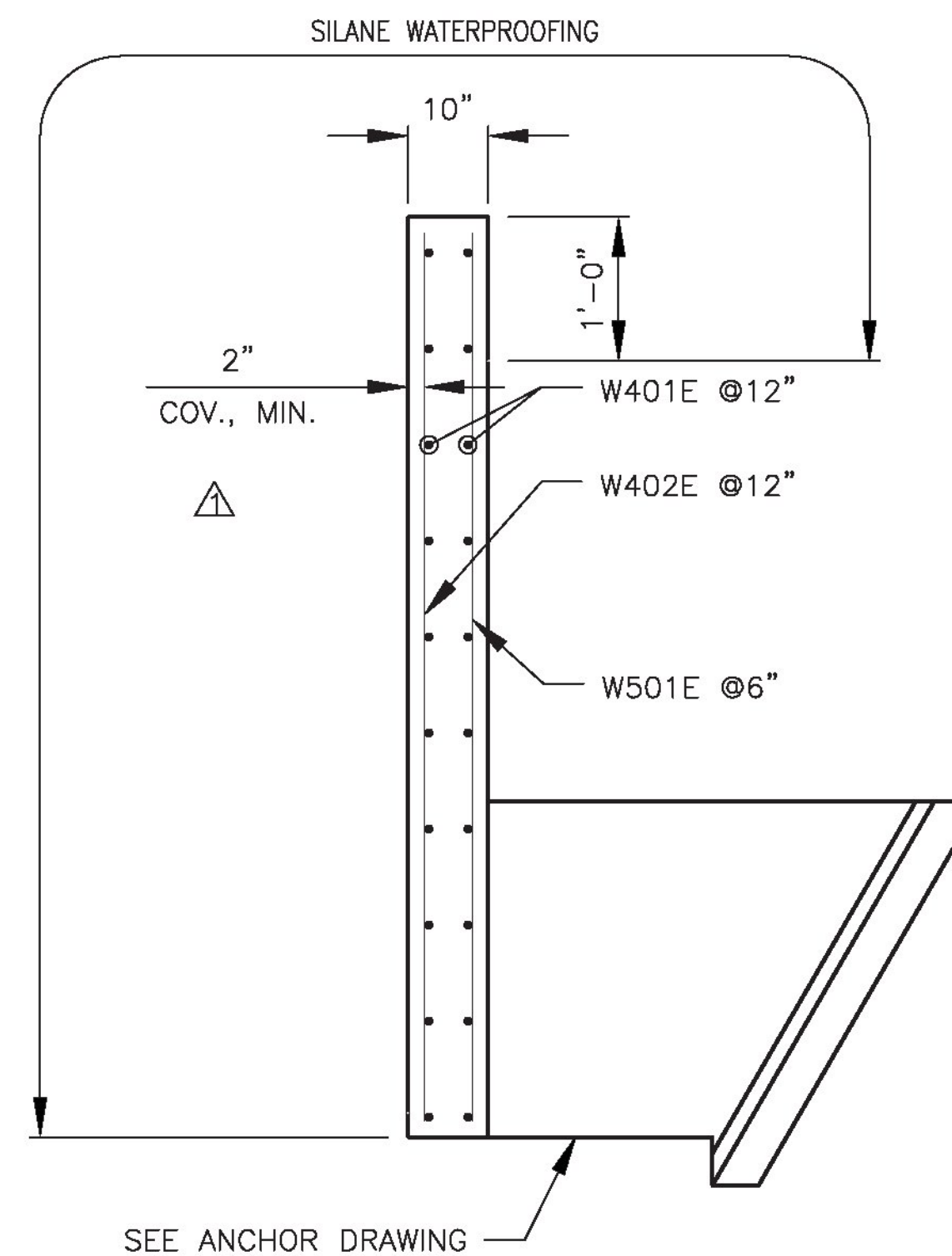
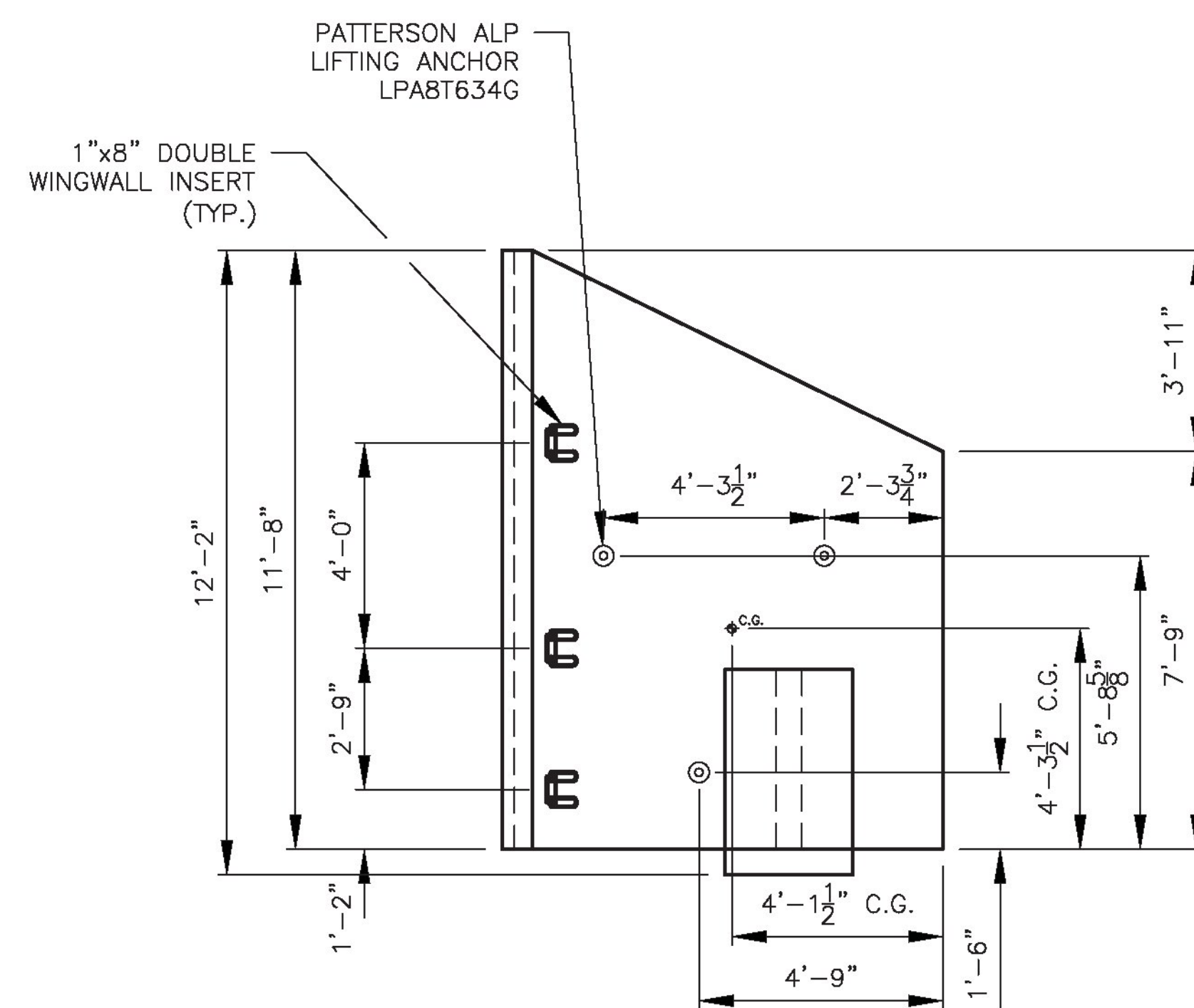
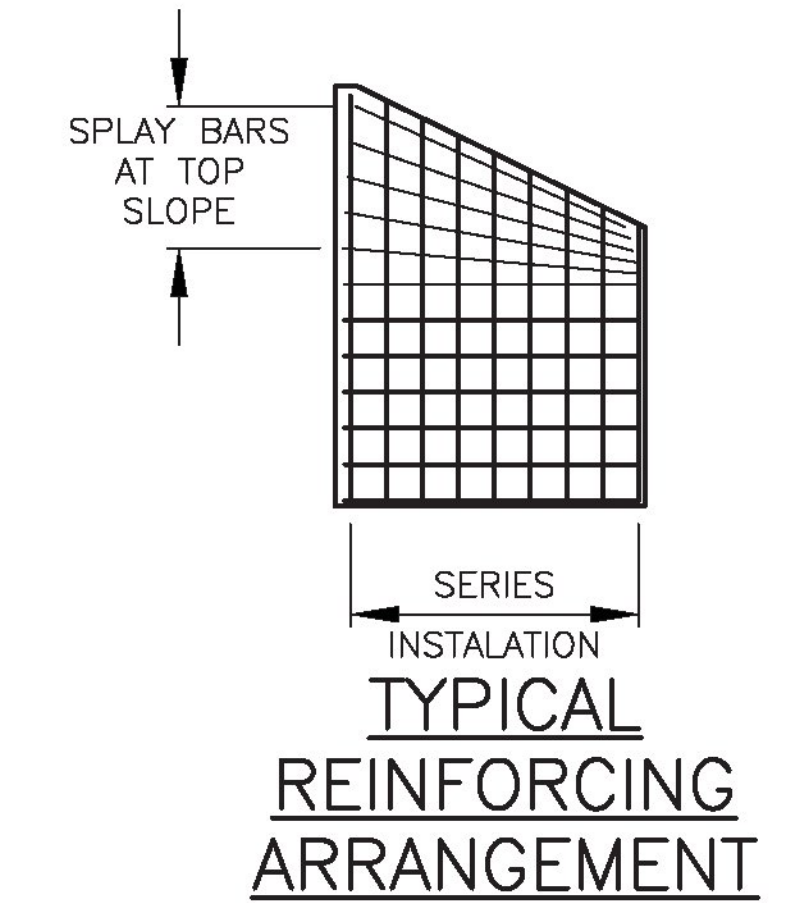


WINGWALL WW1



WINGWALL SECTION



WINGWALL WW1
ELEVATION
SHOWING BACK FACE OF WALL

WINGWALL WW1							
PART	MARK	QTY	SIZE	SPC	NOTE	LEN	TYPE
WW (H)	W401E	24	#4	12"	-	94"	STR
WW (V)	W402E	9	#4	12"	SERIES	136" TO 90"	STR
WW (V)	W501E	18	#5	6"	SERIES	136" TO 90"	STR

NOTE: ALL BAR COVER 2" UNLESS NOTED OTHERWISE. QUANTITIES ARE FOR ONE WINGWALL.



5/8/18

PREPARED BY: DELTA SPECIALTY PRECAST CONCRETE ENGINEERS 860 HOOPER ROAD, ENDWELL, NY 13760 TEL: (607) 231-6600 FAX: (607) 231-6650		PREPARED FOR: CAMP PRECAST CONCRETE PRODUCTS 78 PRECAST RD MILTON, VT 05468 PHONE: (802)893-2401 FAX: (802)893-1542	
DATE: 3/29/18 SCALE: N.T.S.		SHEET TITLE: WINGWALL WW1 DETAILS	
PROJECT: WATERFORD, VT 16' x 8' BOX CULVERT BF 0225(5) VT RT. 18 BRIDGE #2		DRWN BY: BJC CKD BY: RJA	
CONTRACTOR: DELTA PROJ. NO.: 2018.477.003		DWG. I.D.: PD-01 SHT. NO.: 6 OF 13	