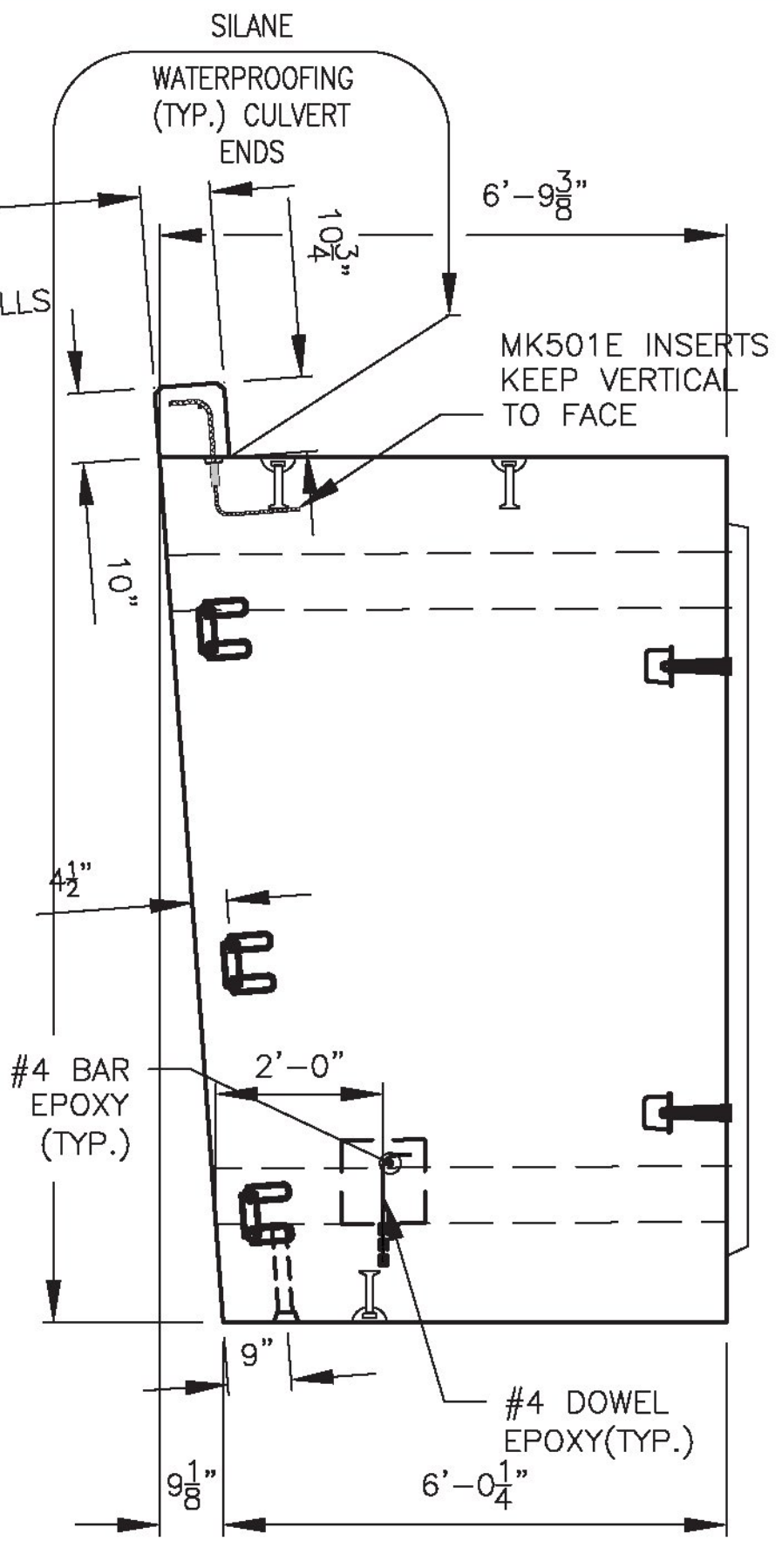
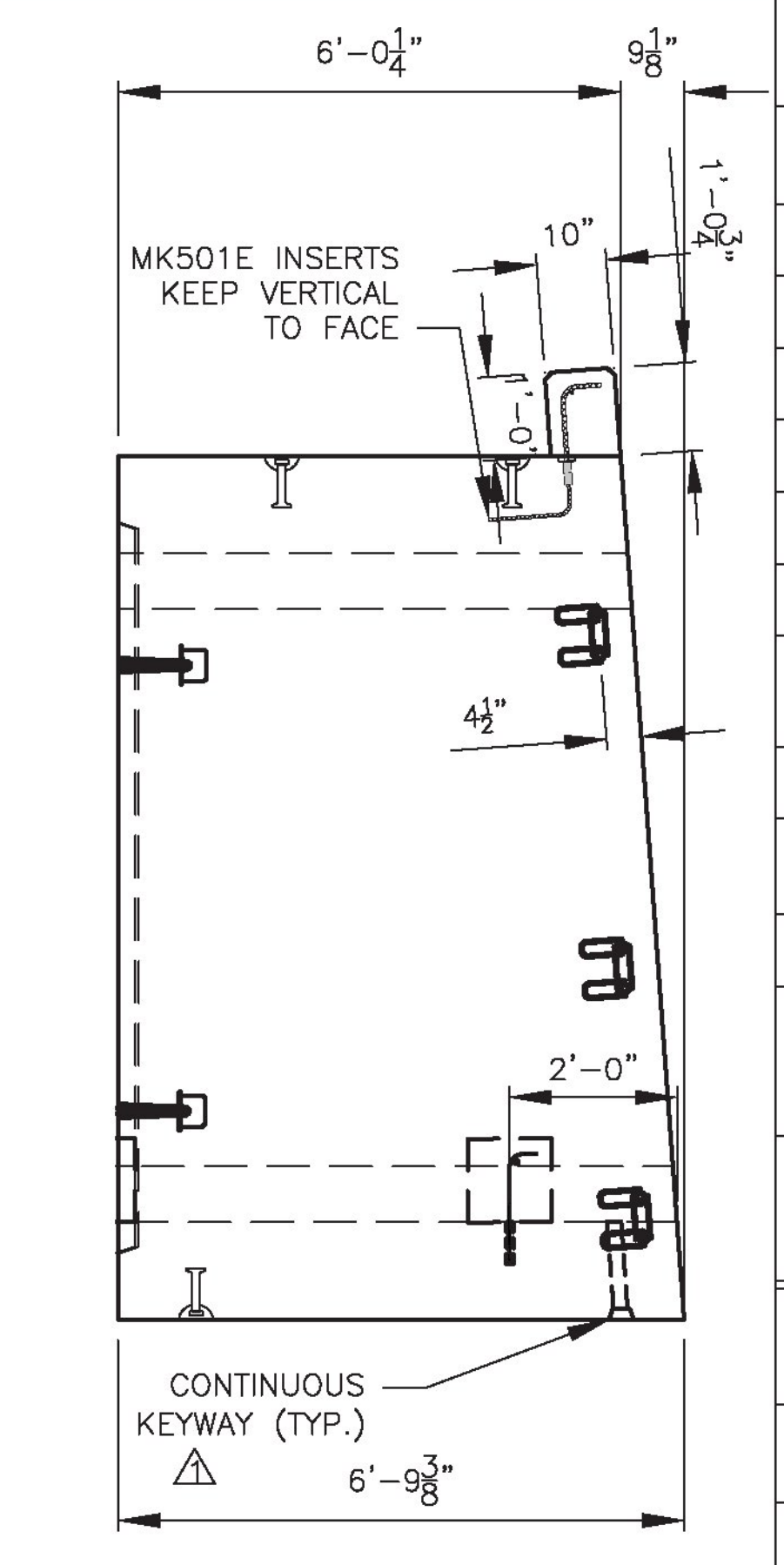


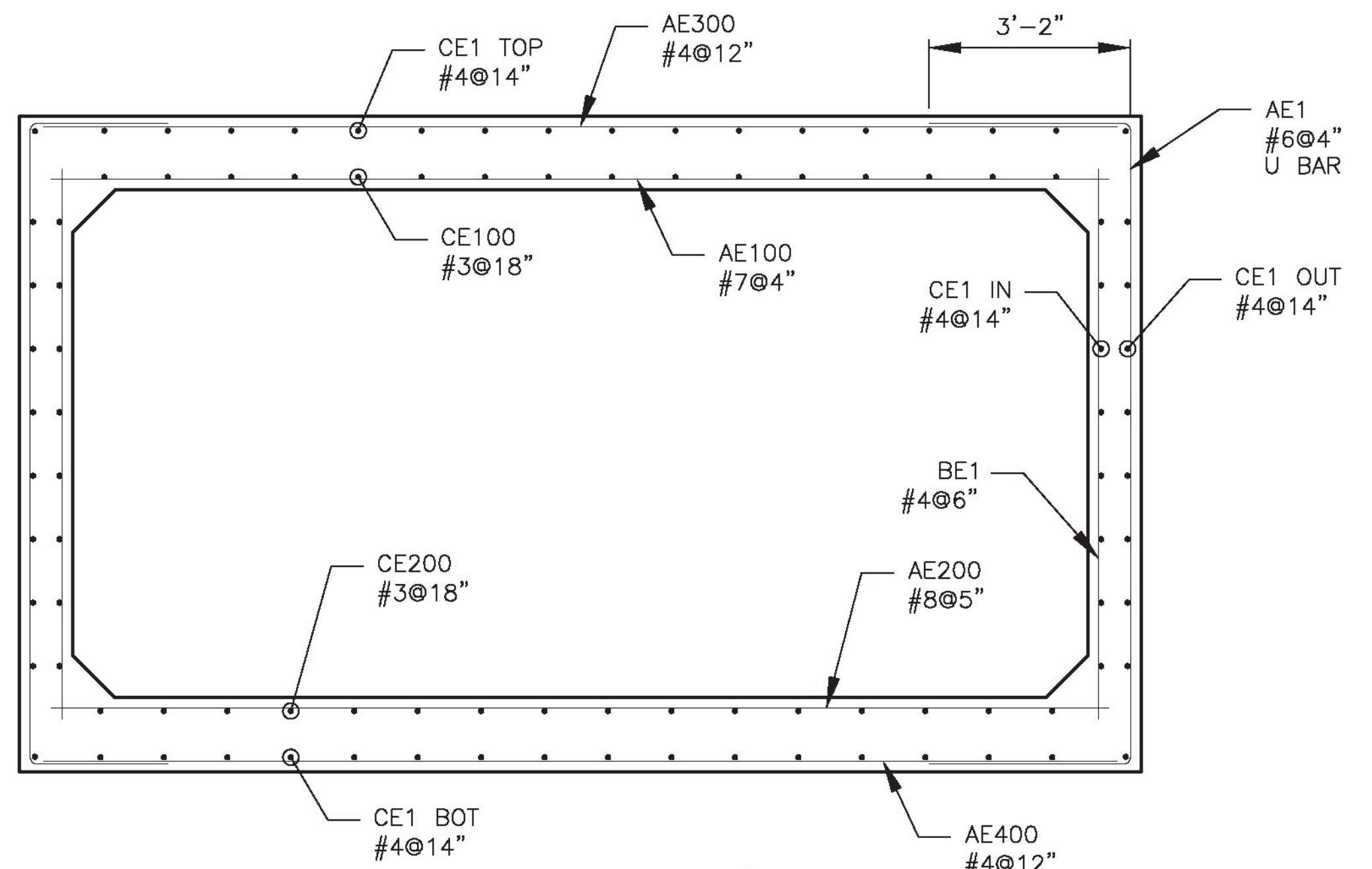
SECTION



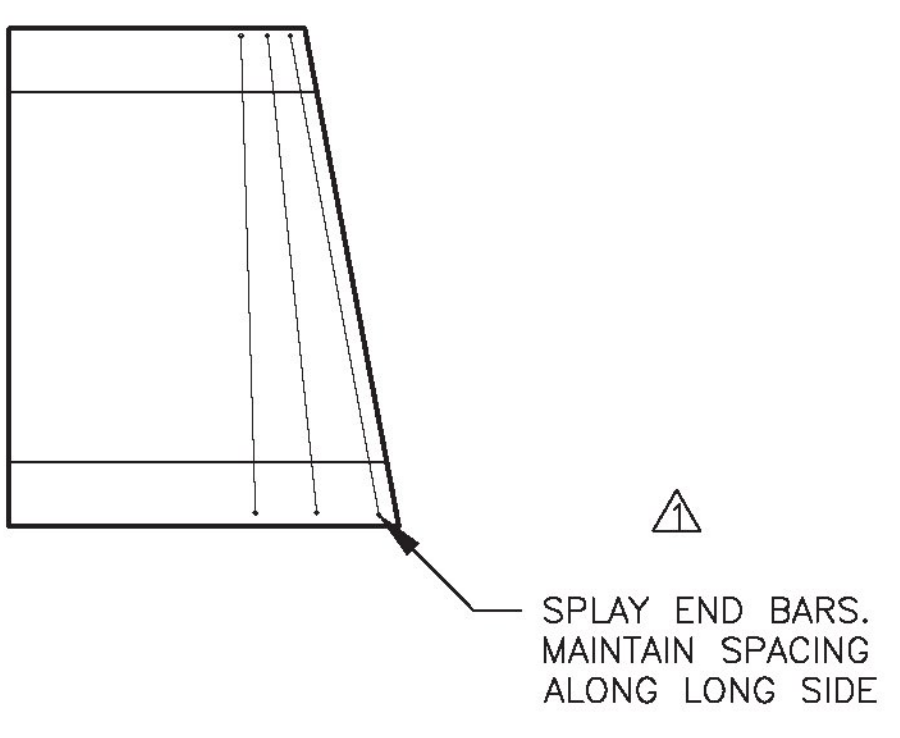
BC-3 ELEVATION



BC-1 ELEVATION



REINFORCING SECTION
(2" CLEAR, MIN.)
(ALL EPOXY BAR)



BC-1 BAR SCHEDULE

MARK	QTY.	BAR SIZE	MAX. SPACING	LENGTH	TYPE	B	C
AE100	17	#7	4"	17'-3"	STR	-	-
AE200	16	#8	5"	17'-3"	STR	-	-
AE300	7	#4	12"	17'-3"	STR	-	-
AE400	8	#4	12"	17'-3"	STR	-	-
AE1	38	#6	4"	16'-4"	"U"	3'-2"	10'-0"
BE1	28	#4	6"	4'-8"	STR	-	-
CE100	11	#3	18"	5'-4"	STR	-	-
CE200	11	#3	18"	6'-1 1/2"	STR	-	-
CE1 TOP	15	#4	14"	5'-8"	STR	-	-
CE1 BOT	15	#4	14"	6'-5 1/2"	STR	-	-
CE1 OUT	16	#4	14"	SERIES 5'-9 1/4" TO 6'-4 1/2"	STR	-	-
CE1 IN	16	#4	14"	SERIES 5'-5 1/4" TO 6'-0 1/4"	STR	-	-

BC-3 BAR SCHEDULE

MARK	QTY.	BAR SIZE	MAX. SPACING	LENGTH	TYPE	B	C
AE100	21	#7	4"	17'-3"	STR	-	-
AE200	14	#8	5"	17'-3"	STR	-	-
AE300	8	#4	12"	17'-3"	STR	-	-
AE400	7	#4	12"	17'-3"	STR	-	-
AE1	38	#6	4"	16'-4"	"U"	3'-2"	10'-0"
BE1	28	#4	6"	4'-8"	STR	-	-
CE100	11	#3	18"	5'-4"	STR	-	-
CE200	11	#3	18"	6'-1 1/2"	STR	-	-
CE1 TOP	15	#4	14"	5'-8"	STR	-	-
CE1 BOT	15	#4	14"	6'-5 1/2"	STR	-	-
CE1 OUT	16	#4	14"	SERIES 5'-9 1/4" TO 6'-4 1/2"	STR	-	-
CE1 IN	16	#4	14"	SERIES 6'-0 1/4" TO 6'-8 1/4"	STR	-	-

ALL EPOXY BAR



5/8/18

PREPARED BY:

860 HOOPER ROAD, ENDWELL, NY 13760
TEL: (607) 231-6600 FAX: (607) 231-6650

PREPARED FOR: **CAMP PRECAST CONCRETE PRODUCTS**

78 PRECAST RD
MILTON, VT 05468
PHONE: (802)893-2401
FAX: (802)893-1542

DATE: 3/29/18 SHEET TITLE: **BC-1 AND BC-3 DETAILS** DRWN BY: BJC
SCALE: N.T.S. CKD BY: RJA

PROJECT: WATERFORD, VT
16' x 8' BOX CULVERT BF 0225(5)
VT RT. 18 BRIDGE #2

CONTRACTOR: DELTA PROJ. NO.: 2018.477.003 DWG. ID. PD-01 SHT. NO. 5 OF 13