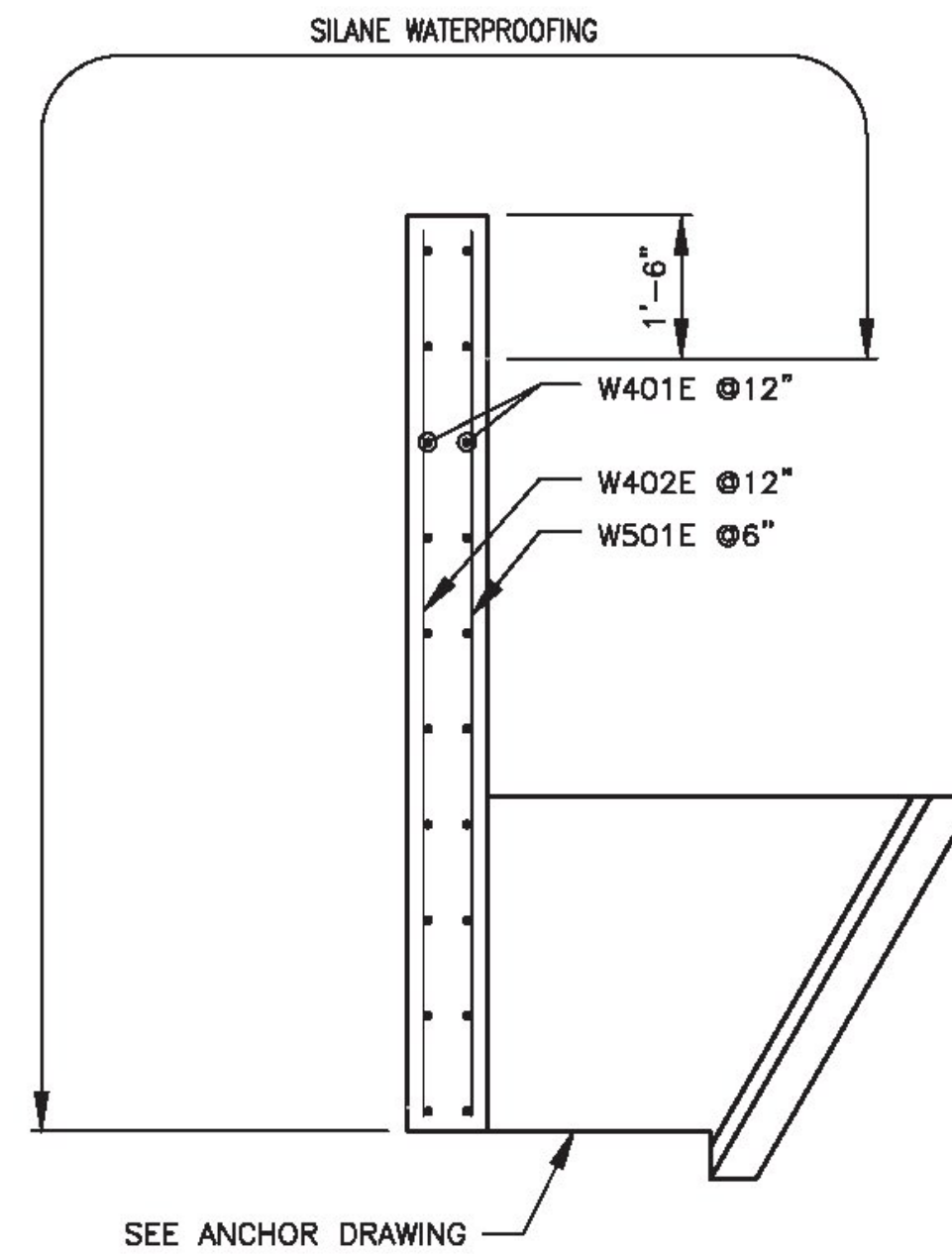
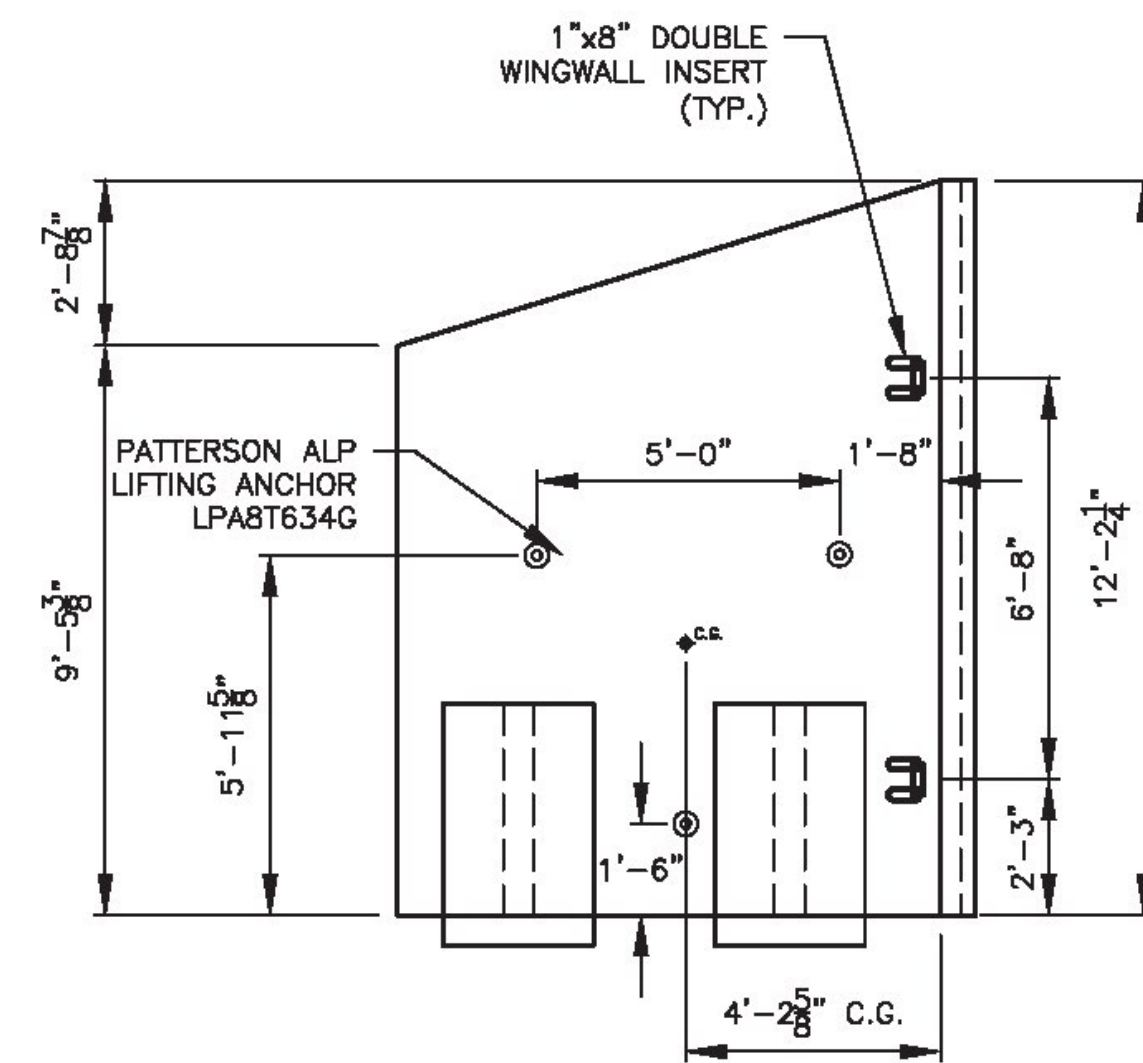
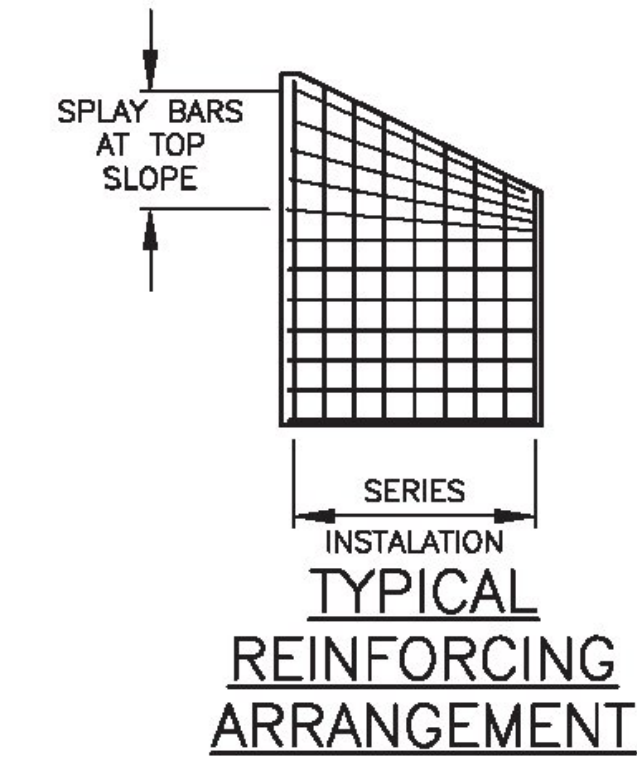


WINGWALL WW4



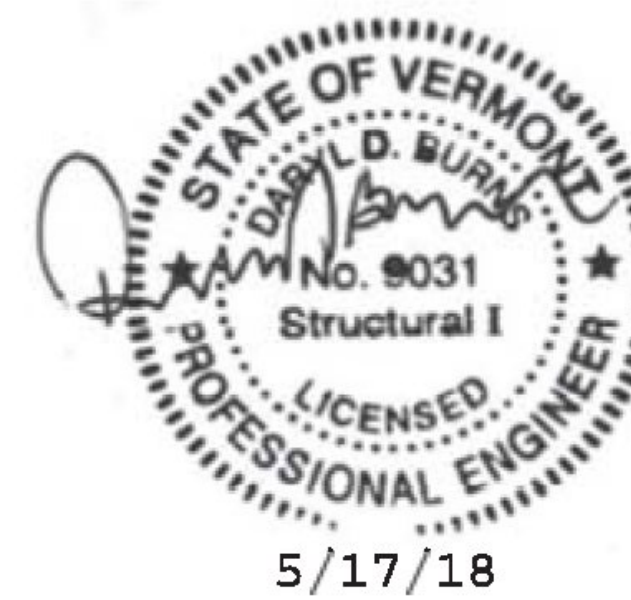
WINGWALL SECTION



WINGWALL WW4 ELEVATION
SHOWING BACK FACE OF WALL

WINGWALL WW4							
PART	MARK	QTY	SIZE	SPC	NOTE	LEN	TYPE
WW (H)	W401E	24	#4	12"	-	104"	STR
WW (V)	W402E	10	#4	12"	SERIES	142 TO 109"	STR
WW (V)	W501E	19	#5	6"	SERIES	142 TO 109"	STR

NOTE: ALL BAR COVER 2" MIN. UNLESS NOTED OTHERWISE. QUANTITIES ARE FOR ONE WINGWALL.



REV. NO.		DATE	REVISION	PREPARED FOR:		CAMP PRECAST CONCRETE PRODUCTS	
				78 PRECAST RD MILTON, VT 05468 PHONE: (802)893-2401 FAX: (802)893-1542			
DATE: 4/20/18		SHEET TITLE: WINGWALL WW4 DETAILS		DRAWN BY: BJC		CHKD BY: RPJ/RJA	
SCALE: N.T.S.		PROJECT: TOWN OF WATERFORD, CALEDONIA, VT 16' x 8' BOX CULVERT VT RT. 18 BRIDGE #7		CONTRACTOR:		DWG. I.D. PD-02	
PREPARED BY: DELTA SPECIALTY PRECAST CONCRETE ENGINEERS 880 HOOPER ROAD, ENDWELL, NY 13760 TEL: (607) 231-6600 FAX: (607) 231-6650		DELTA PROJ. NO.: 2018.477.003		SHT. NO. 11 OF 16			