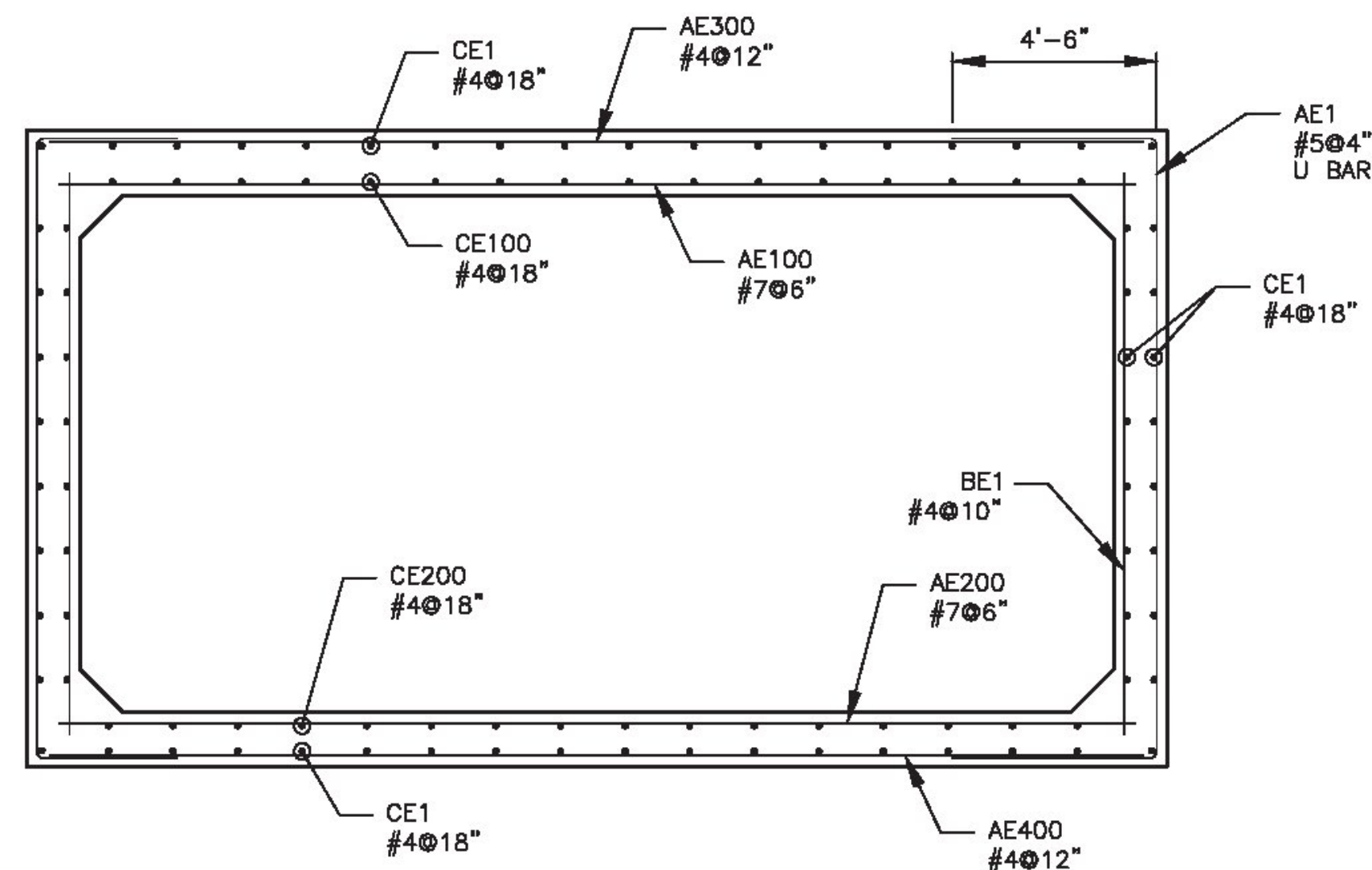


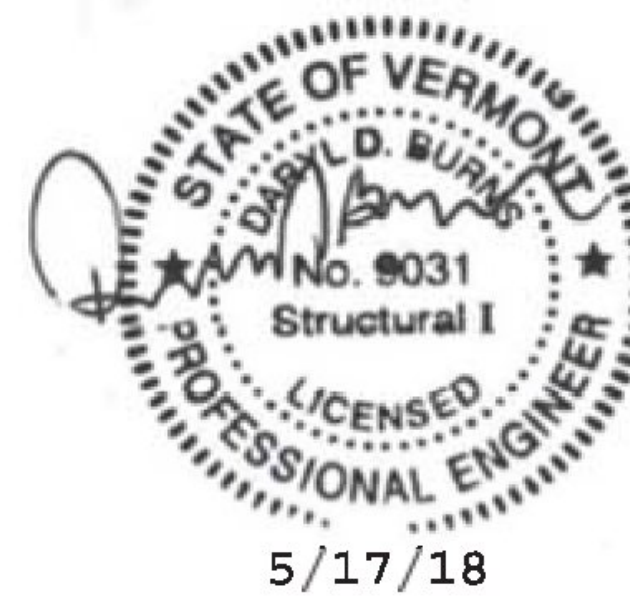
JOINT DETAILS
(ELEVATION VIEW)
(SEE SHEET 15)

BC-2 BAR SCHEDULE						B	C	B
						"U" BAR		
MARK	QTY.	BAR SIZE	MAX. SPACING	LENGTH	TYPE	B	C	
AE100	14	#7	6"	17'-4"	STR	-	-	
AE200	14	#7	6"	17'-4"	STR	-	-	
AE300	7	#4	12"	17'-4"	STR	-	-	
AE400	7	#4	12"	17'-4"	STR	-	-	
AE1	42	#5	4"	18'-6"	"U"	4'-6"	9'-6"	
BE1	18	#4	10"	8'-6"	STR	-	-	
CE100	11	#4	18"	6'-5"	STR	-	-	
CE200	11	#4	18"	6'-5"	STR	-	-	
CE1	48	#4	18"	6'-5"	STR	-	-	

ALL EPOXY BAR



REINFORCING SECTION
(2" MIN. CLEAR)
(ALL EPOXY BAR)



PREPARED FOR:		CAMP PRECAST CONCRETE PRODUCTS	
		78 PRECAST RD MILTON, VT 05468 PHONE: (802)893-2401 FAX: (802)893-1542	
DATE: 4/20/18	SHEET TITLE: BC-2 REINFORCING AND DETAILS	DRWN BY: BJC	CHKD BY: RPJ/RJA
SCALE: N.T.S.	PROJECT: TOWN OF WATERFORD, CALEDONIA, VT 16' x 8' BOX CULVERT BF 0225(4) VT RT. 18 BRIDGE #7		
CONTRACTOR: DELTA SPECIALTY PRECAST CONCRETE ENGINEERS	DWG. NO. 2018.477.003	DWG. T.D. PD-02	SHT. NO. 4 OF 16

DELTA
SPECIALTY PRECAST CONCRETE ENGINEERS
680 HOOPER ROAD, ENDWELL, NY 13760
TEL: (607) 231-6600 FAX: (607) 231-6650