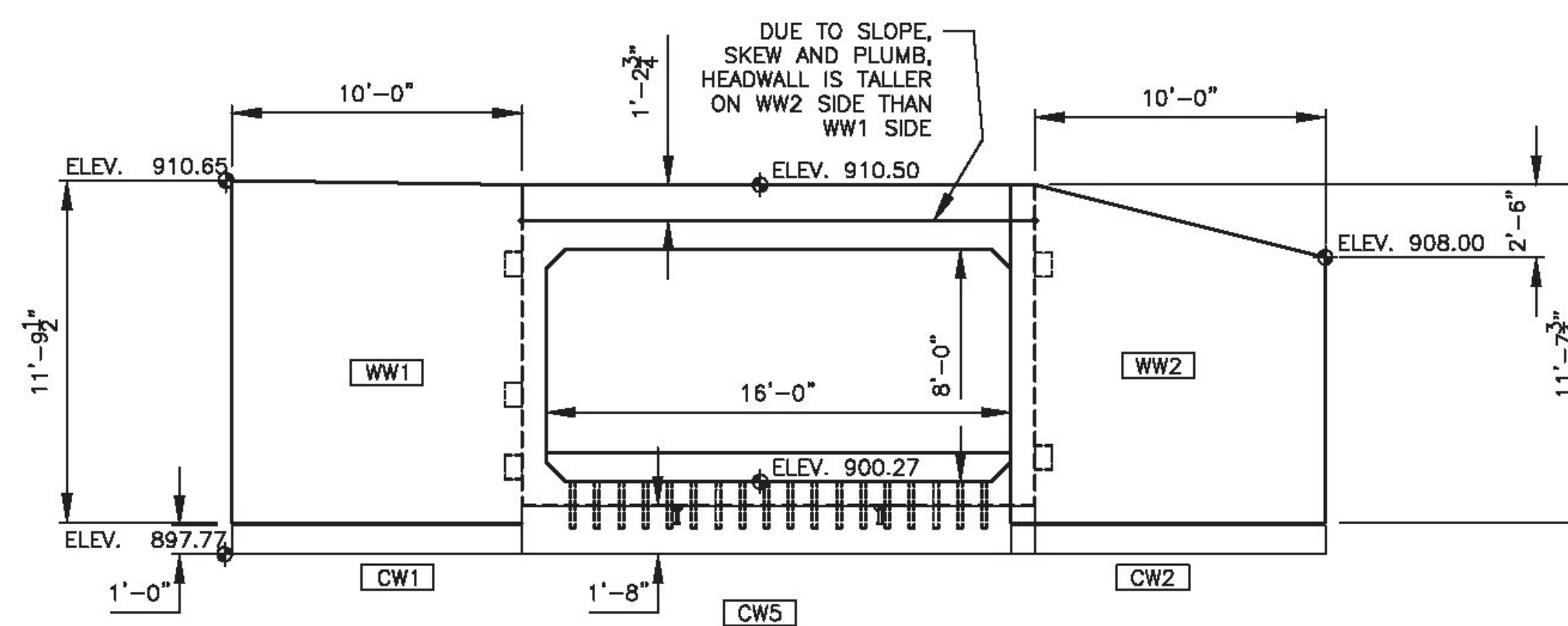


INLET END VIEW



OUTLET END VIEW  
(SECTION BC-1 IS SLOPED, SKEWED, AND PLUMB)

TABLE OF UNITS				
MARK	QTY	LONGEST LENGTH	VOL (CY)	WEIGHT (LBS)
* BC-1	1	7'-6"	8.19	38,759
ATTACHED	1	HEADWALL ON ABOVE	.81	
ATTACHED	1	BAFFLE EACH	0.57	
* BC-2	6	6'-9 5/8"	11.74	49,856
* BC-3	1	6'-7"	10.75	49,370
ATTACHED	1	HEADWALL ON ABOVE	.87	
WW1	1	10'-0"	4.8	19,602
WW2	1	10'-0"	4.4	17,901
WW3	1	9'-0"	4.3	17,456
WW4	1	9'-0"	4.3	17,456
CW1	1	17'-8"	0.94	3,807
CW2	1	17'-8"	0.98	3,969
CW3	1	8'-10 1/4"	0.85	3,443
CW4	1	8'-10 1/4"	0.85	3,443
CW5	1	8'-10 1/4"	2.85	11,543
CW6	1	13'-10 1/4"	2.70	10,935

\* VOLUME FOR CULVERT ONLY. WEIGHT PER SHIPPING PIECE INCLUDES HEADWALL AND BAFFLE.



5/17/18

PREPARED BY:		PREPARED FOR:	
 880 HOOPER ROAD, ENDWELL, NY 13760 TEL: (607) 231-6600 FAX: (607) 231-6650		<b>CAMP PRECAST CONCRETE PRODUCTS</b> 78 PRECAST RD MILTON, VT 05468 PHONE: (802)893-2401 FAX: (802)893-1542	
REV. NO.	DATE	REVISION	
DATE:	4/20/18	SHEET TITLE:	END VIEWS
SCALE:	N.T.S.	DRWN BY:	BJC
PROJECT:		CHKD BY: RPJ/RJA	
TOWN OF WATERFORD, CALEDONIA, VT		16' x 8' BOX CULVERT BF 0225(4)	
VT RT. 18 BRIDGE #7		CONTRACTOR:	
DELTA PROJ. NO.: 2018.477.003		DWS. I.D. PD-02	
		SHT. NO. 3 OF 16	