

CONTROL POINTS

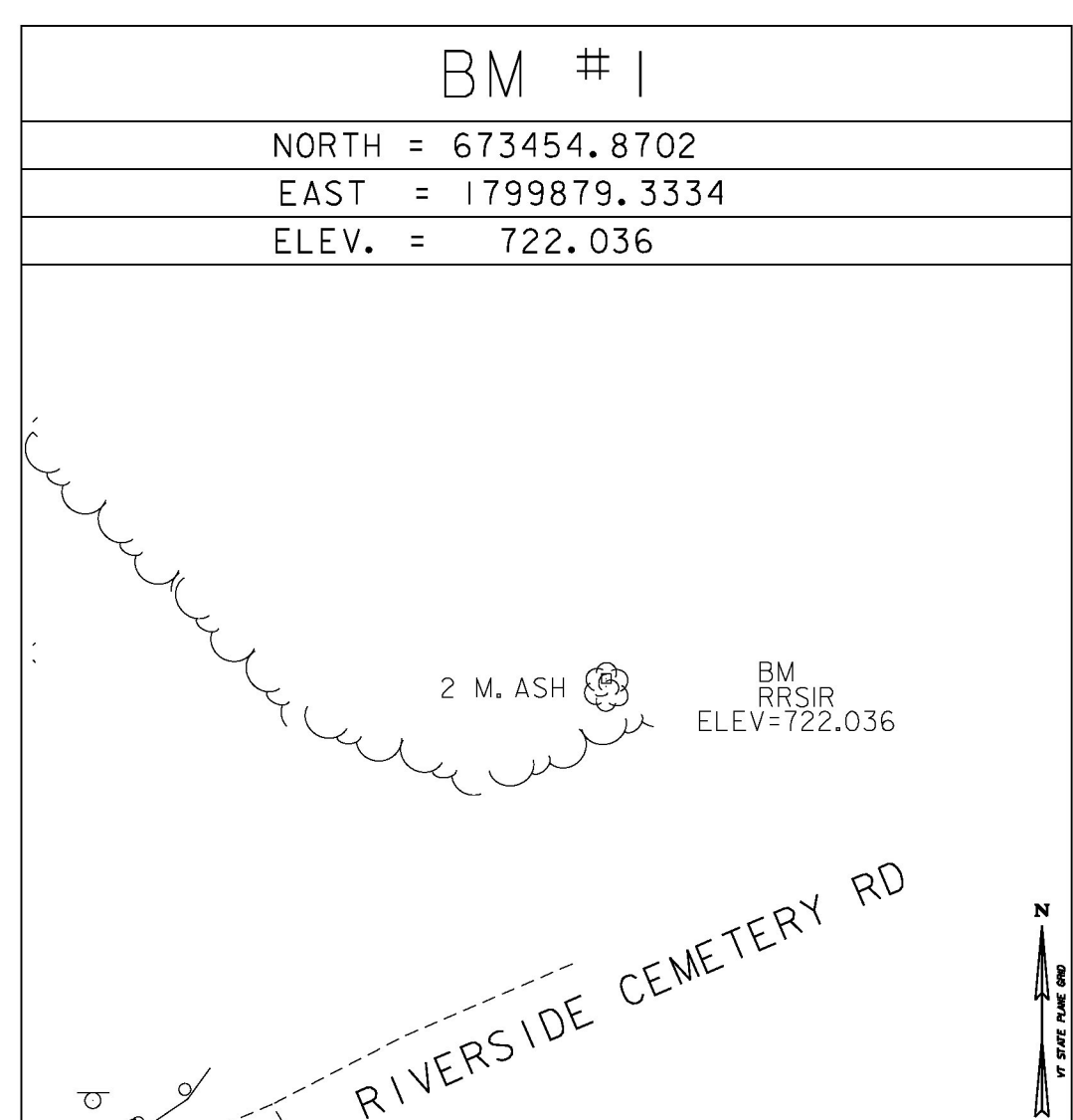
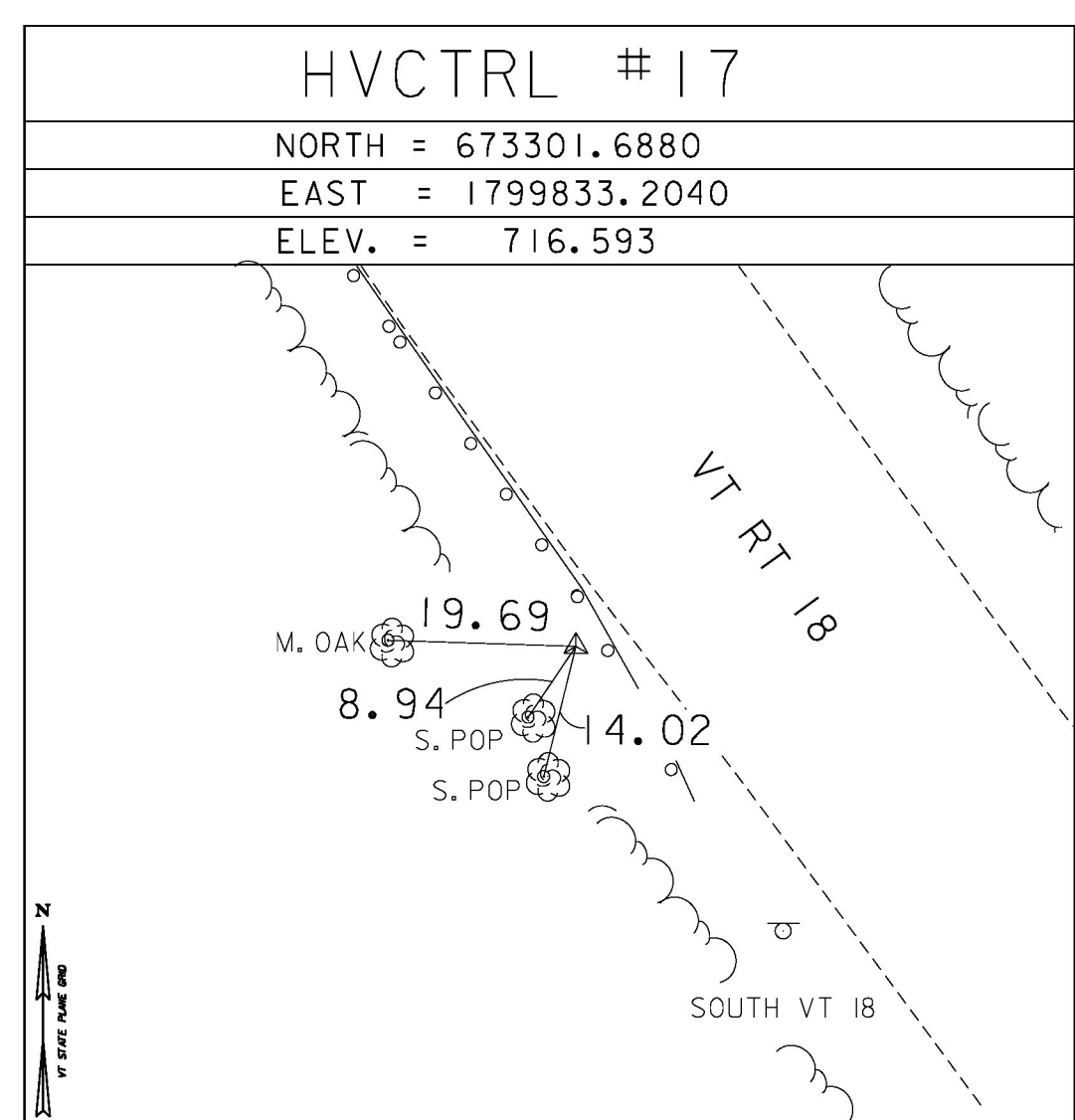
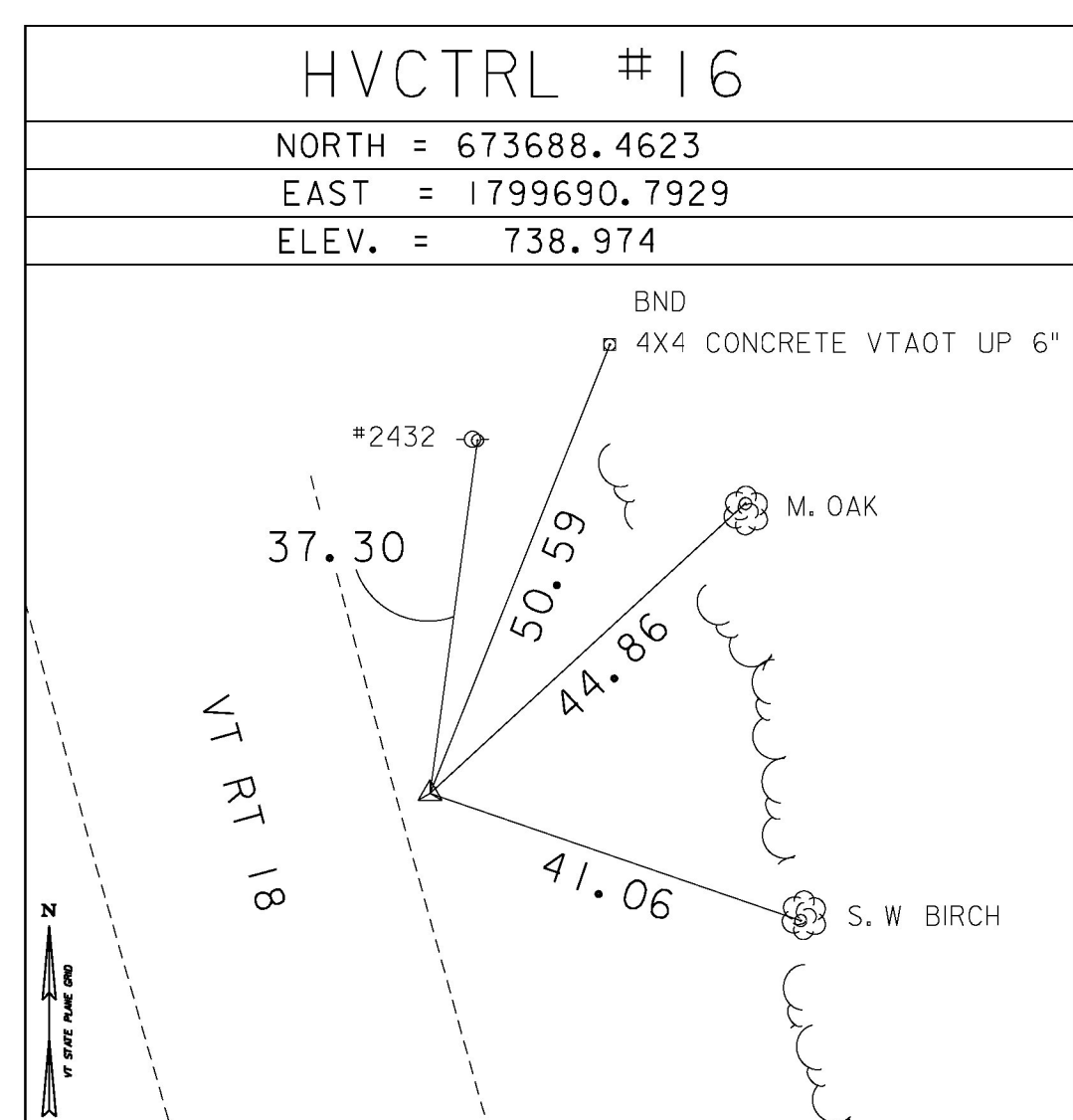
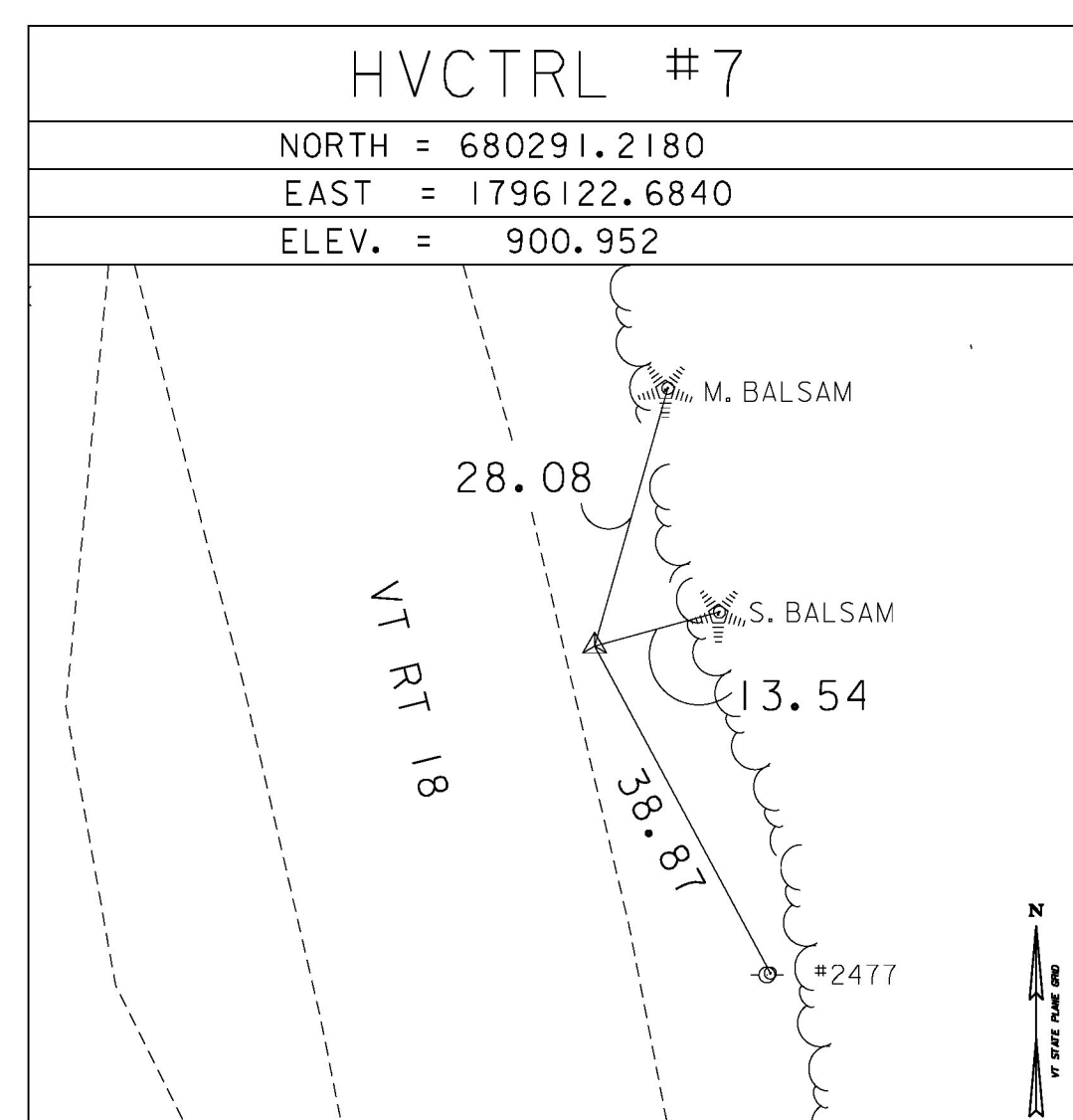
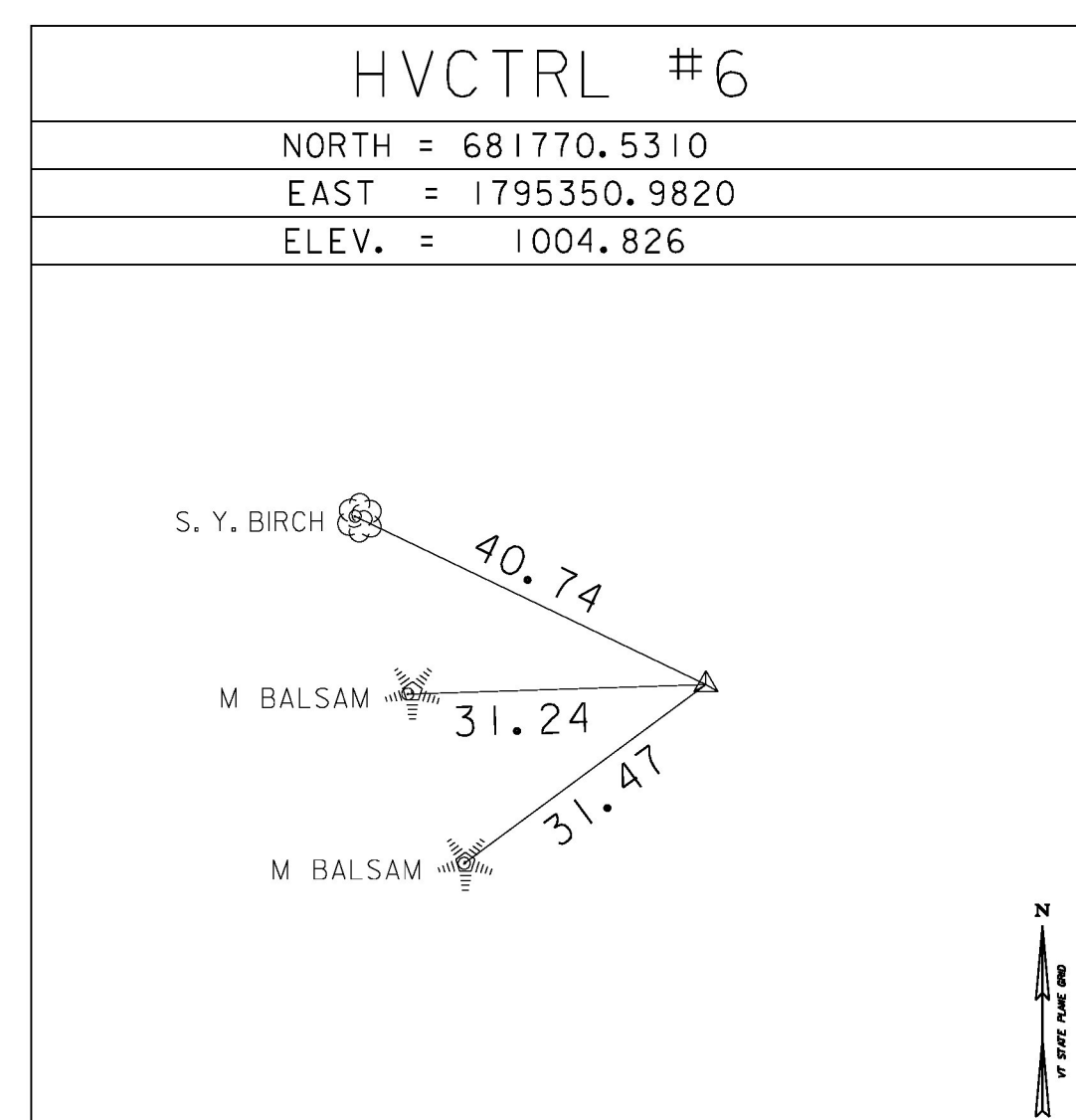
PT #1 REMICK  
 NORTH = 685606.947  
 EAST = 1791789.540  
 ELEV. = 1353.599

PT #2 REMICK AZ MK  
 NORTH = 684854.031  
 EAST = 1793272.968  
 ELEV. = 1250.614

GENERAL LOCATION, WATERFORD, VT.  
 TO REACH FROM THE VT ROUTE 18 BRIDGE OVER INTERSTATE 93 AT EXIT 1 GO  
 SOUTHEAST ALONG VT ROUTE 18 FOR 4.1 MI (6.6 KM) TO THE INTERSECTION  
 OF REMICK ROAD RIGHT AND THE SITE OF THE MARK ON THE RIGHT.  
 THE MARK IS SET 15 CM (6 INCHES) BELOW GROUND SURFACE IN THE TOP OF  
 A FENO STYLE MONUMENT. IT IS 22.5 M (73.8 FT) WEST OF AND 2.5 M  
 (8.2 FT) HIGHER THAN THE CENTERLINE OF VT ROUTE 18, 13.0 M (42.7 FT)  
 NORTH OF THE CENTERLINE OF REMICK ROAD, 8.7 M (28.5 FT) NORTHWEST OF  
 A ROAD SIGN (LEGAL LOAD LIMIT), 5.5 M (18.0 FT) SOUTH OF A POLE GUY  
 WITH SHEATH AND 8.5 M (27.9 FT) SOUTH-SOUTHWEST OF POLE NO  
 73-1/250 AND A POLE STUB AND A FIBERGLASS WITNESS POST.

GENERAL LOCATION, WATERFORD, VT.  
 TO REACH FROM THE VT ROUTE 18 BRIDGE OVER INTERSTATE 93 AT EXIT 1 GO  
 SOUTHEAST ALONG VT ROUTE 18 FOR 4.1 MI (6.6 KM) TO THE INTERSECTION  
 OF REMICK ROAD RIGHT. CONTINUE STRAIGHT AHEAD AND GO SOUTHEAST  
 ALONG VT ROUTE 18 FOR 0.3 MI (0.5 KM) TO THE SITE OF THE MARK ON THE  
 LEFT.  
 THE MARK IS SET IN THE TOP OF A 0.5 M (1.6 FT) X 0.7 M (2.3 FT) ROCK  
 OUTCROP WHICH PROJECTS SLIGHTLY ABOVE GROUND SURFACE. IT IS 14.4 M  
 (47.2 FT) NORTHEAST OF AND 0.2 M (0.7 FT) LOWER THAN THE CENTERLINE  
 OF VT ROUTE 18, 9.3 M (30.5 FT) EAST-SOUTHEAST OF THE CENTER OF A  
 50 CM (20 INCH) SQUARE STEEL DROP INLET, 26.2 M (86.0 FT) SOUTHEAST  
 OF MILE MARKER 0180/0316/0300, 24.8 M (81.4 FT) NORTH OF THE  
 NORTHWEST END OF A STEEL BEAM GUARD RAIL, 62.4 M (204.7 FT)  
 NORTHWEST OF AN ANGLE POINT WITH BRACES IN A WIRE RIGHT-OF-WAY FENCE  
 AND 2.1 M (6.9 FT) SOUTHWEST OF THE RIGHT-OF-WAY FENCE AND A  
 FIBERGLASS WITNESS POST.

TRAVERSE TIES



ALIGNMENT TIES

NORTH =
EAST =
ELEV. =

NORTH =
EAST =
ELEV. =

NORTH =
EAST =
ELEV. =

NORTH =
EAST =
ELEV. =

NORTH =
EAST =
ELEV. =

DATUM  
 VERTICAL NAVD 88  
 HORIZONTAL NAD83(2011)  
 ADJUSTMENT COMPASS

PROJECT NAME: WATERFORD  
 PROJECT NUMBER: BF 0225(5)  
 FILE NAME: xi5b05H1D.dgn PLOT DATE: 09/27/2017  
 PROJECT LEADER: T. LEVINS DRAWN BY: C. CYR  
 DESIGNED BY: VTRANS CHECKED BY: P. BEYOR  
 TIE SHEET SHEET 38 OF 63