

GPS CONTROL POINTS

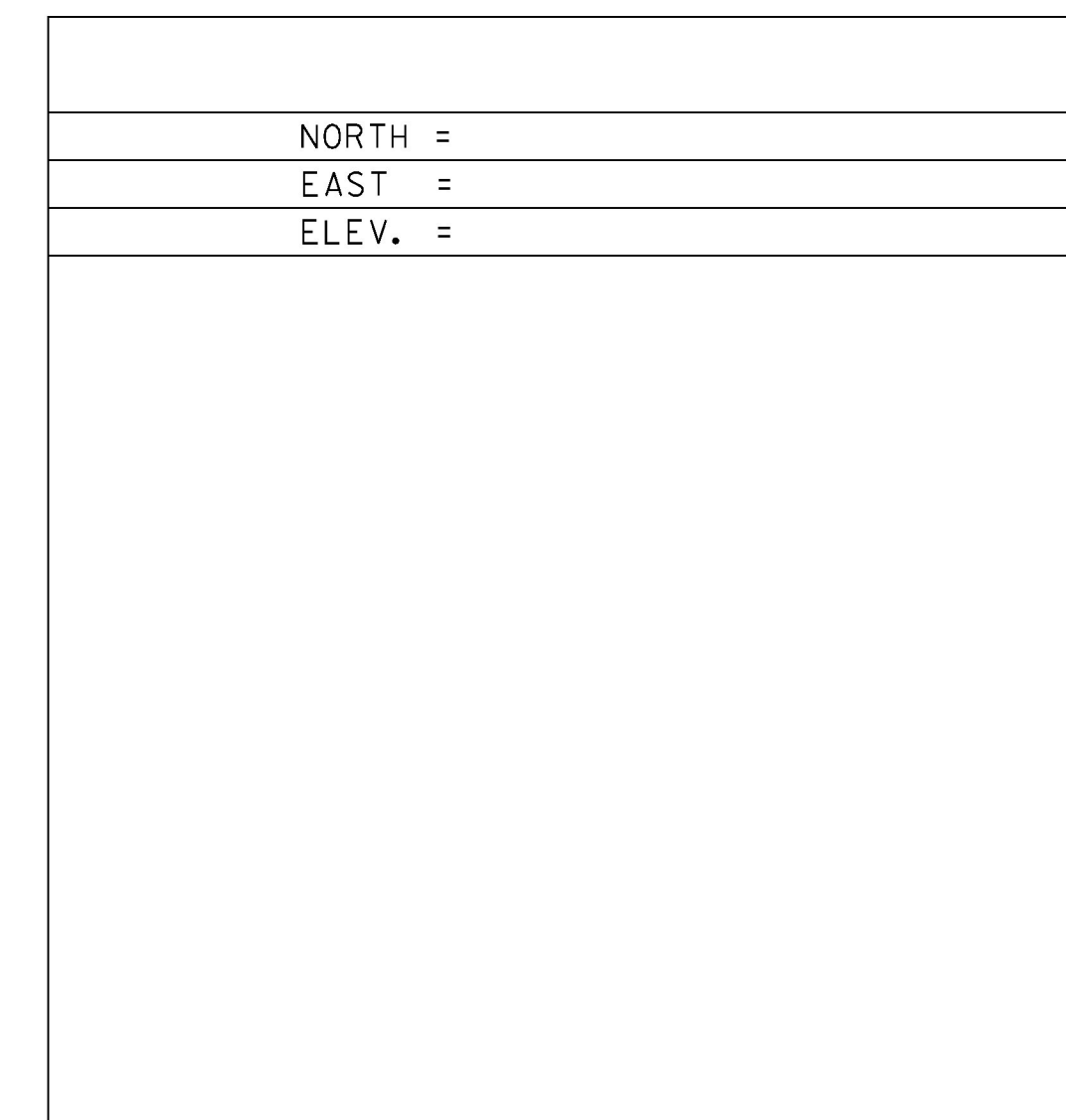
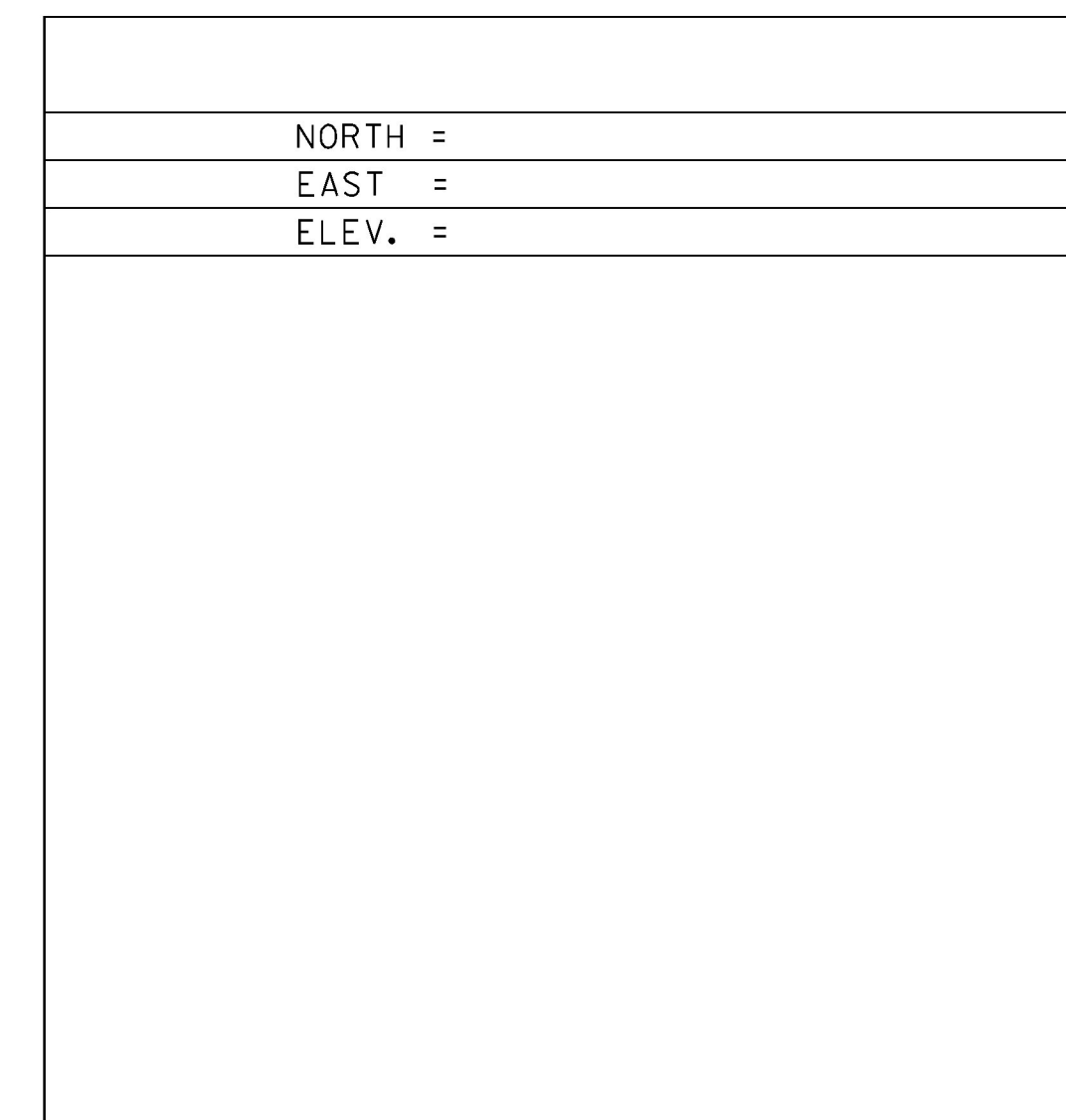
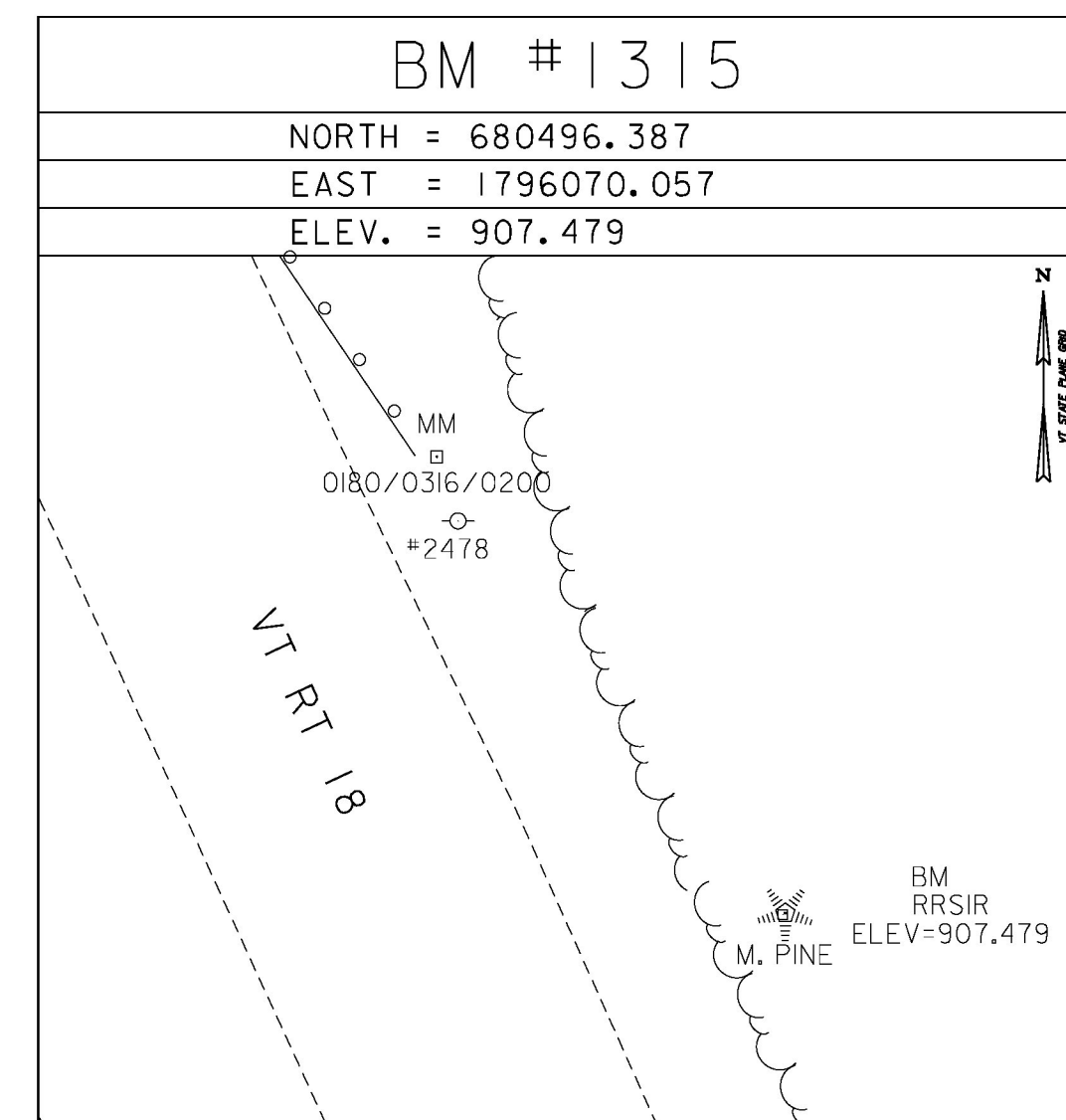
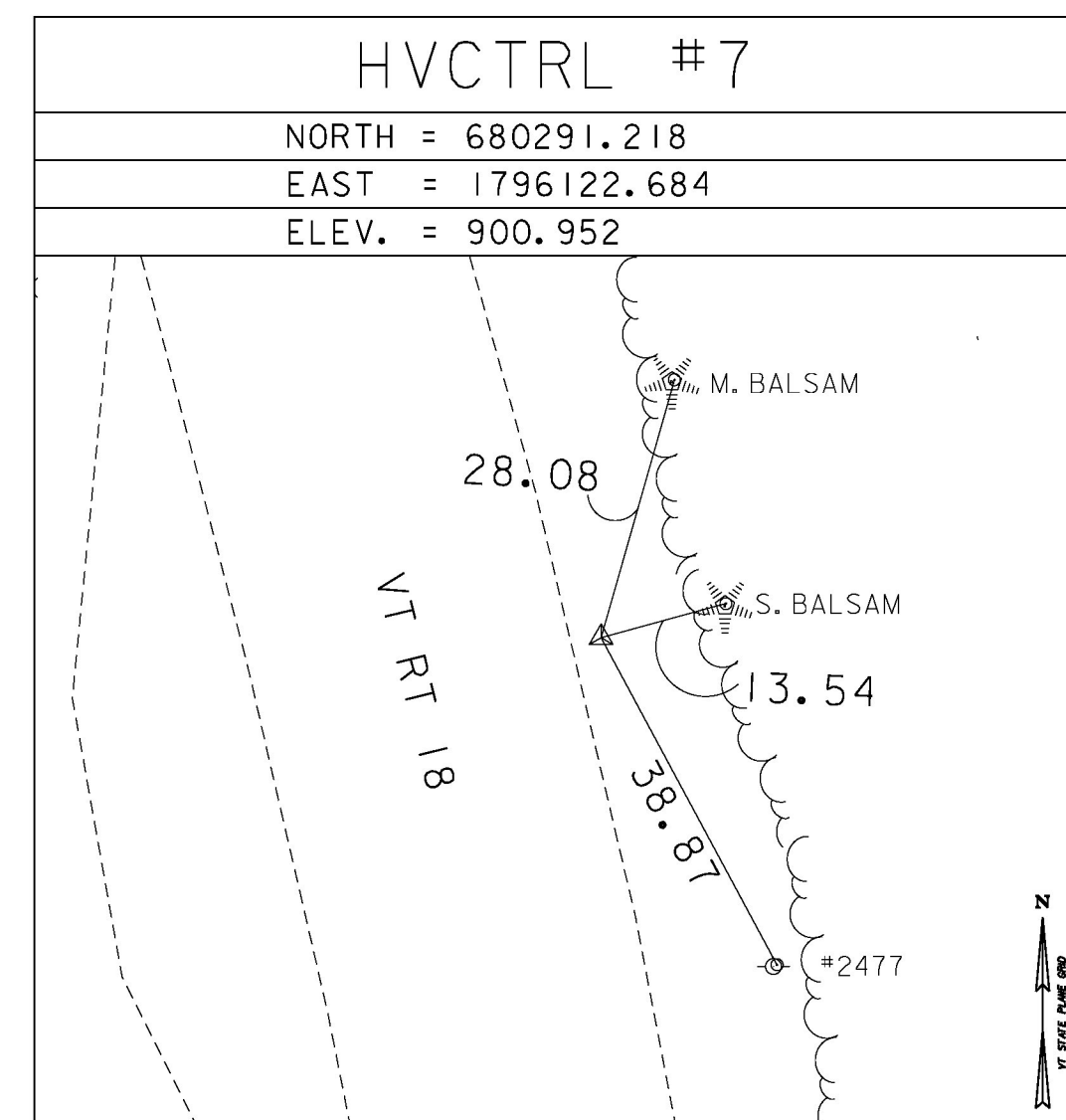
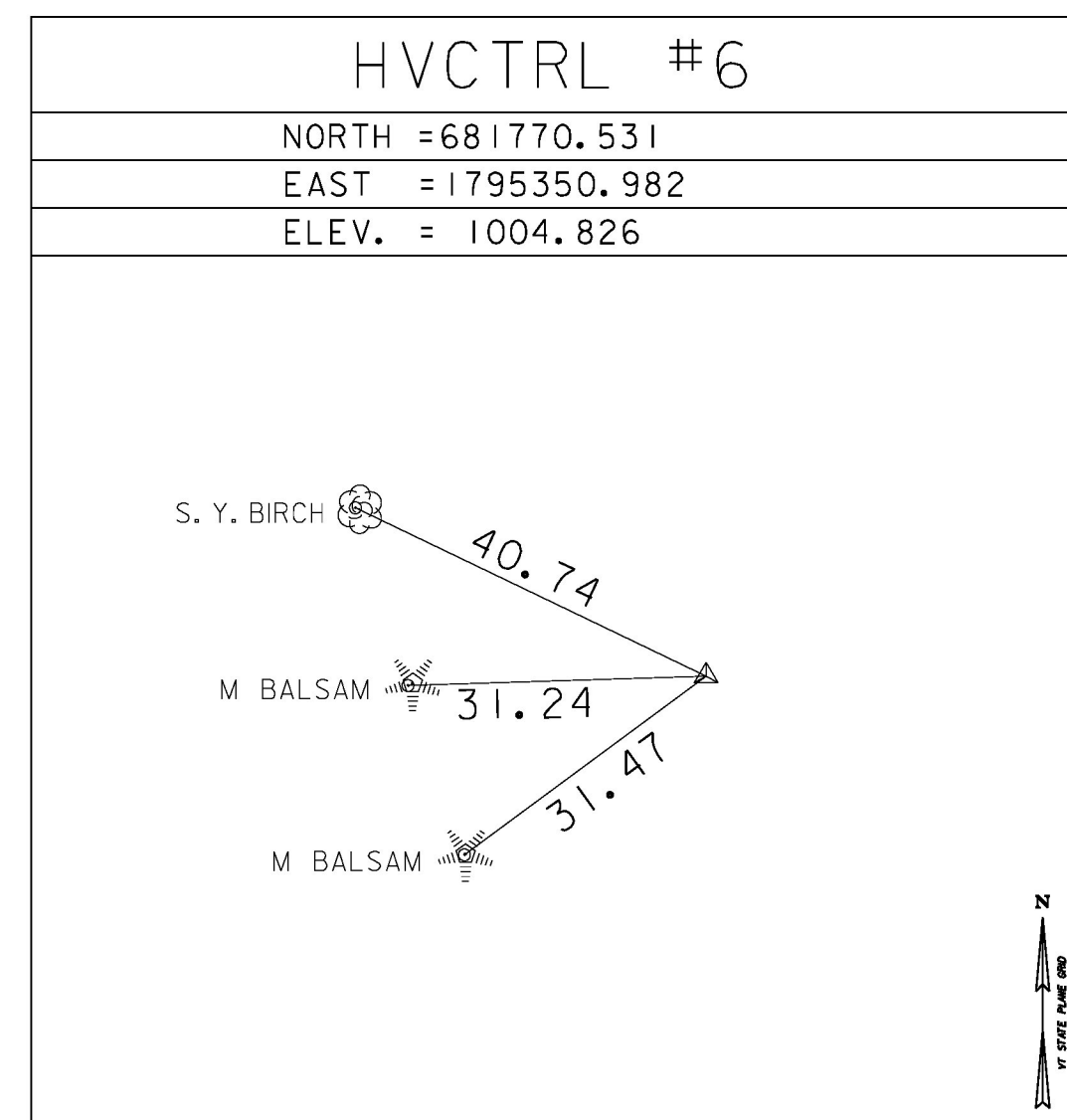
PT #1 REMICK
 NORTH = 685606.947
 EAST = 1791789.540
 ELEV. = 1353.599

GENERAL LOCATION, WATERFORD, VT.
 TO REACH FROM THE VT ROUTE 18 BRIDGE OVER INTERSTATE 93 AT EXIT 1 GO
 SOUTHEAST ALONG VT ROUTE 18 FOR 4.1 MI (6.6 KM) TO THE INTERSECTION
 OF REMICK ROAD RIGHT AND THE SITE OF THE MARK ON THE RIGHT.
 THE MARK IS SET 15 CM (6 INCHES) BELOW GROUND SURFACE IN THE TOP OF
 A FENO STYLE MONUMENT. IT IS 22.5 M (73.8 FT) WEST OF AND 2.5 M
 (8.2 FT) HIGHER THAN THE CENTERLINE OF VT ROUTE 18, 13.0 M (42.7 FT)
 NORTH OF THE CENTERLINE OF REMICK ROAD, 8.7 M (28.5 FT) NORTHWEST OF
 A ROAD SIGN (LEGAL LOAD LIMIT), 5.5 M (18.0 FT) SOUTH OF A POLE GUY
 WITH SHEATH AND 8.5 M (27.9 FT) SOUTH-SOUTHWEST OF POLE NO
 73-1/250 AND A POLE STUB AND A FIBERGLASS WITNESS POST.

PT #2 REMICK AZ MK
 NORTH = 684854.031
 EAST = 1793272.968
 ELEV. = 1250.614

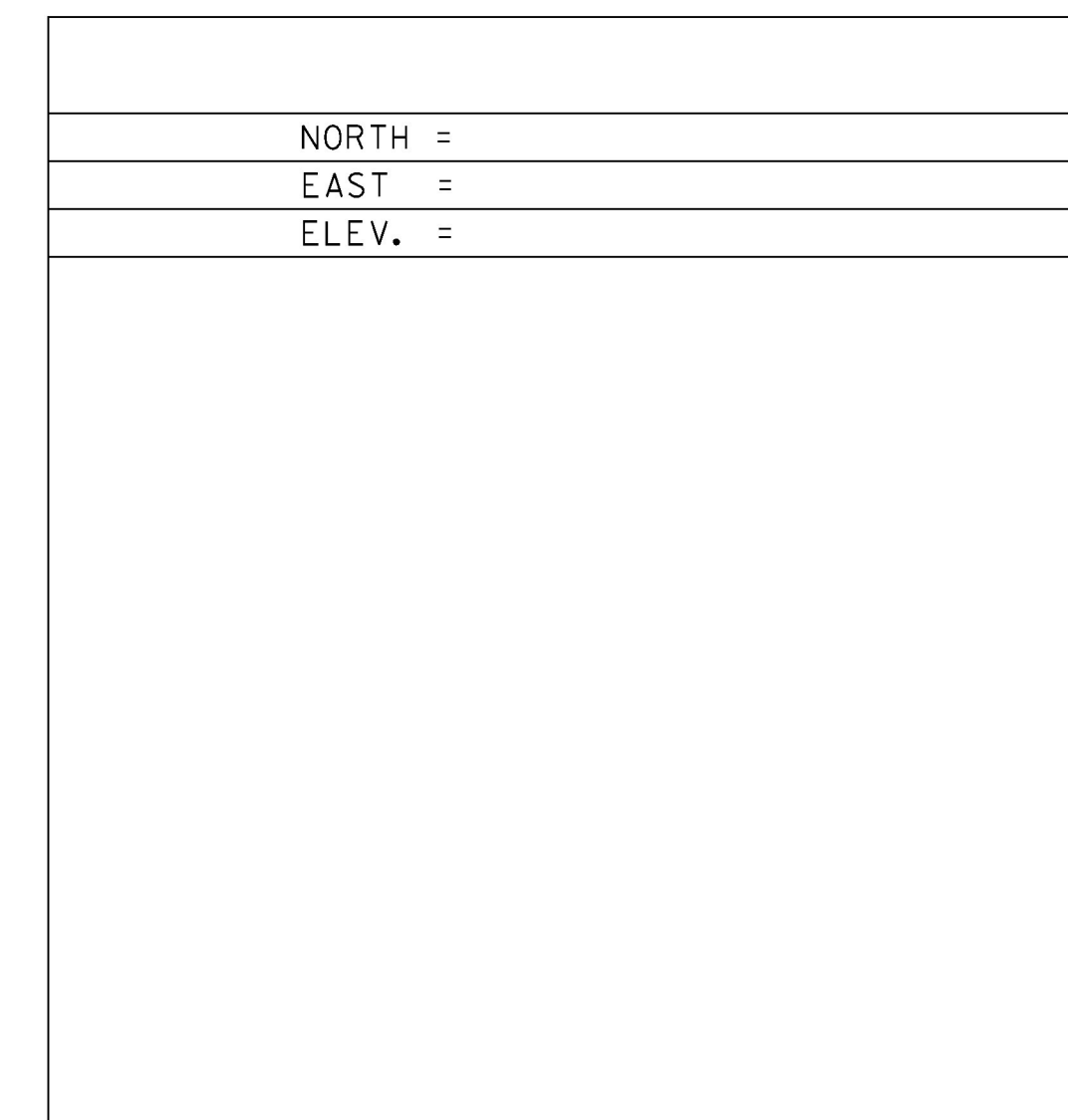
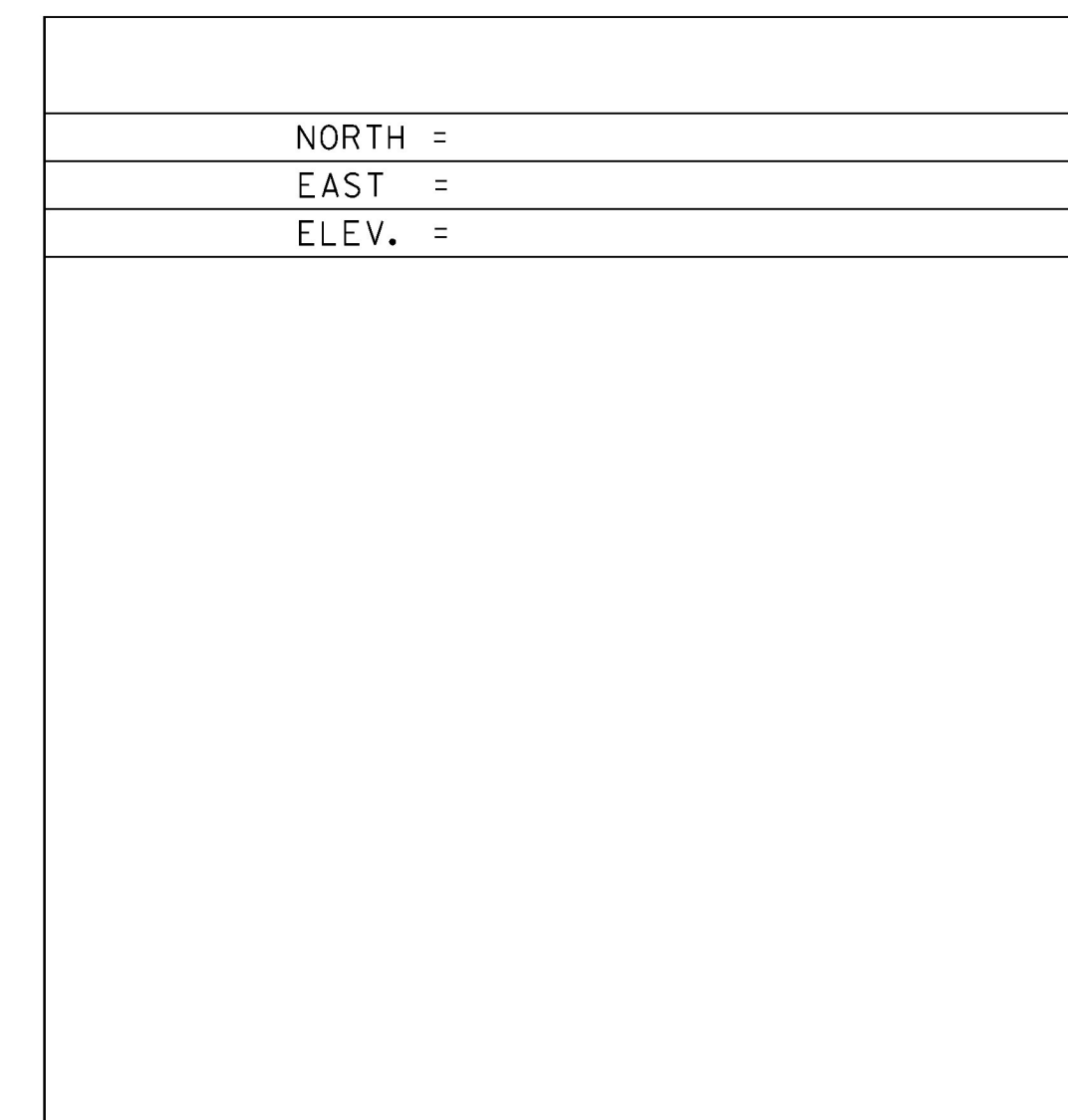
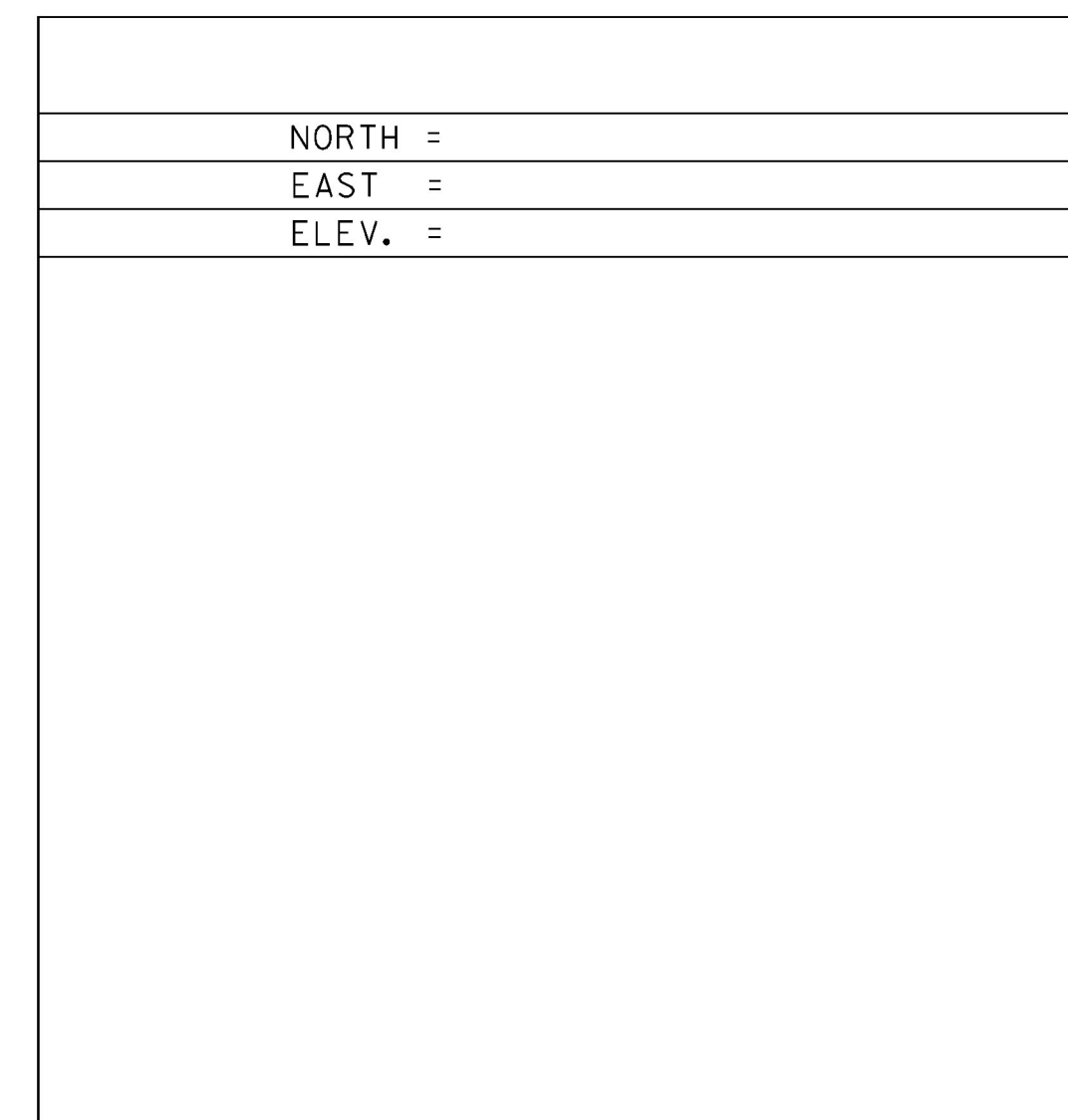
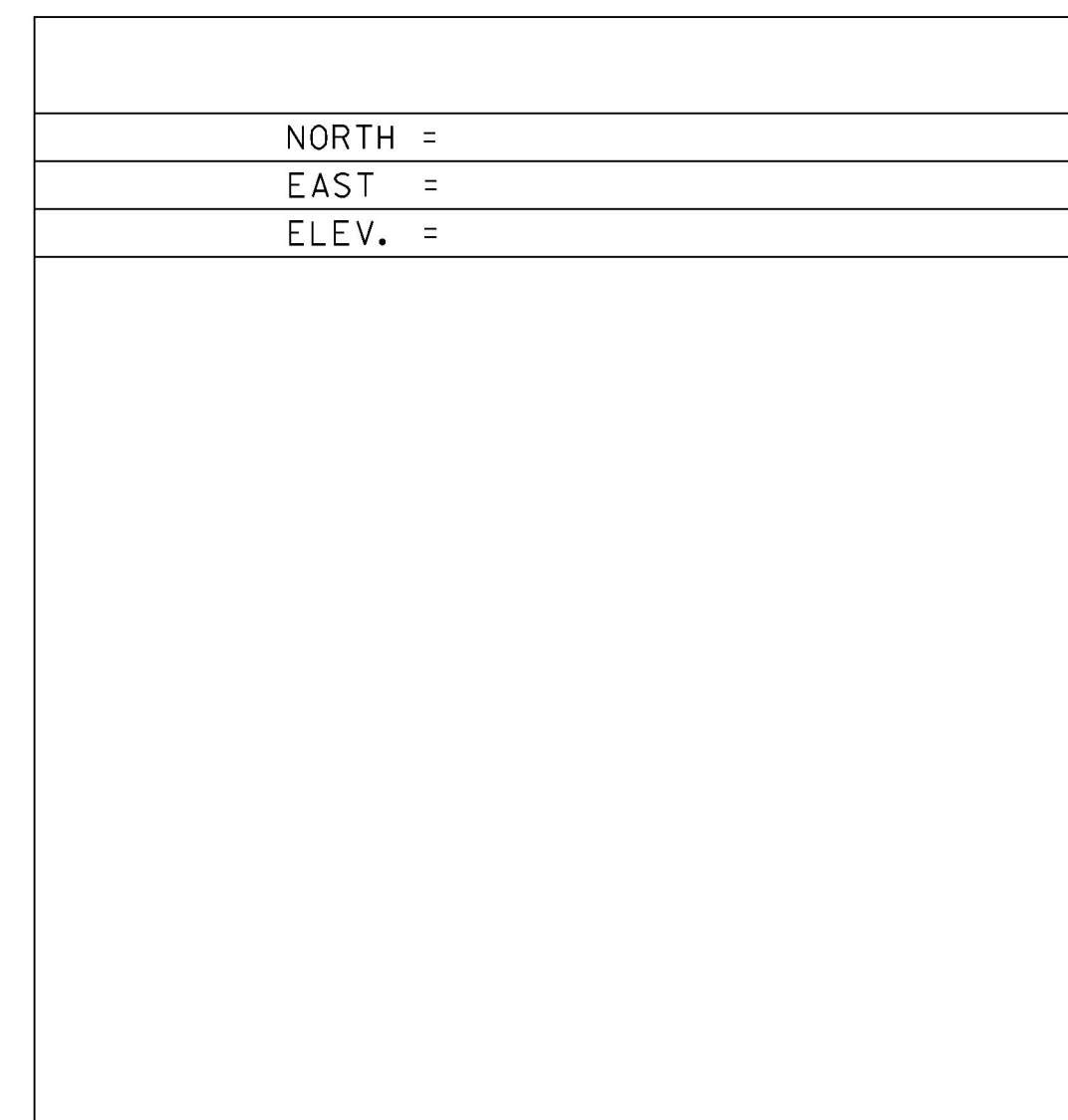
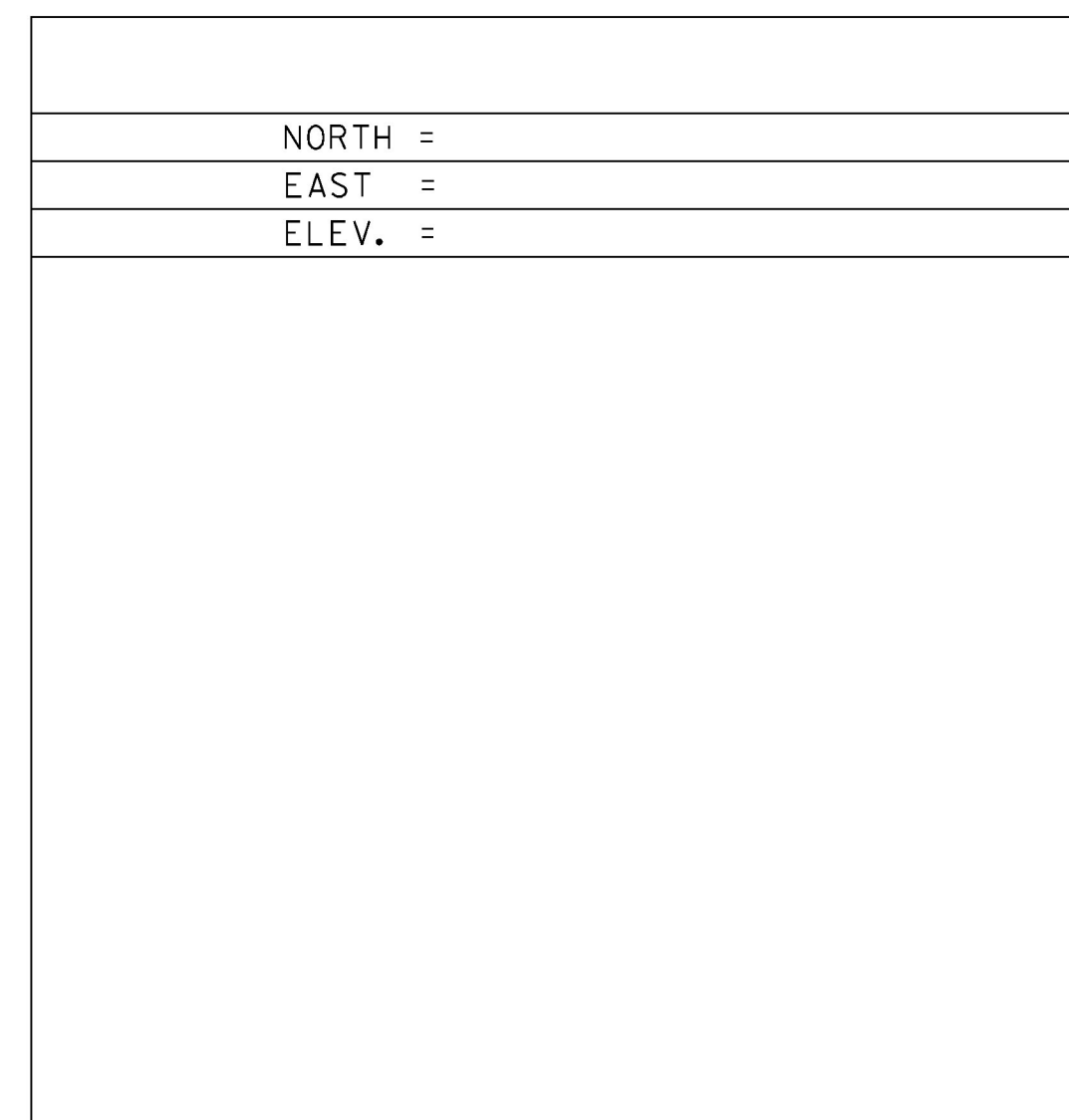
GENERAL LOCATION, WATERFORD, VT.
 TO REACH FROM THE VT ROUTE 18 BRIDGE OVER INTERSTATE 93 AT EXIT 1 GO
 SOUTHEAST ALONG VT ROUTE 18 FOR 4.1 MI (6.6 KM) TO THE INTERSECTION
 OF REMICK ROAD RIGHT. CONTINUE STRAIGHT AHEAD AND GO SOUTHEAST
 ALONG VT ROUTE 18 FOR 0.3 MI (0.5 KM) TO THE SITE OF THE MARK ON THE
 LEFT.
 THE MARK IS SET IN THE TOP OF A 0.5 M (1.6 FT) X 0.7 M (2.3 FT) ROCK
 OUTCROP WHICH PROJECTS SLIGHTLY ABOVE GROUND SURFACE. IT IS 14.4 M
 (47.2 FT) NORTHEAST OF AND 0.2 M (0.7 FT) LOWER THAN THE CENTERLINE
 OF VT ROUTE 18, 9.3 M (30.5 FT) EAST-SOUTHEAST OF THE CENTER OF A
 50 CM (20 INCH) SQUARE STEEL DROP INLET, 26.2 M (86.0 FT) SOUTHEAST
 OF MILE MARKER 0180/0316/0300, 24.8 M (81.4 FT) NORTH OF THE
 NORTHWEST END OF A STEEL BEAM GUARD RAIL, 62.4 M (204.7 FT)
 NORTHWEST OF AN ANGLE POINT WITH BRACES IN A WIRE RIGHT-OF-WAY FENCE
 AND 2.1 M (6.9 FT) SOUTHWEST OF THE RIGHT-OF-WAY FENCE AND A
 FIBERGLASS WITNESS POST.

TRAVERSE TIES



MAIN TRAVERSE COMPLETED 5/20/2013 BY R. GILMAN P.C. & P. WINTERS

ALIGNMENT TIES



DATUM	
VERTICAL	NAVD 88
HORIZONTAL	NAD83(2011)
ADJUSTMENT	COMPASS

PROJECT NAME: WATERFORD	
PROJECT NUMBER: BF 0225(4)	
FILE NAME: survey\13C268T1.dgn	PLOT DATE: 09/27/2017
PROJECT LEADER: C. WILLIAMS	DRAWN BY: C. CYR
DESIGNED BY: VTRANS	CHECKED BY: P. BEYOR
TIE SHEET	SHEET 9 OF 63