

MILLED RUMBLE STRIPS
STA. 100+00 TO 105+00, C

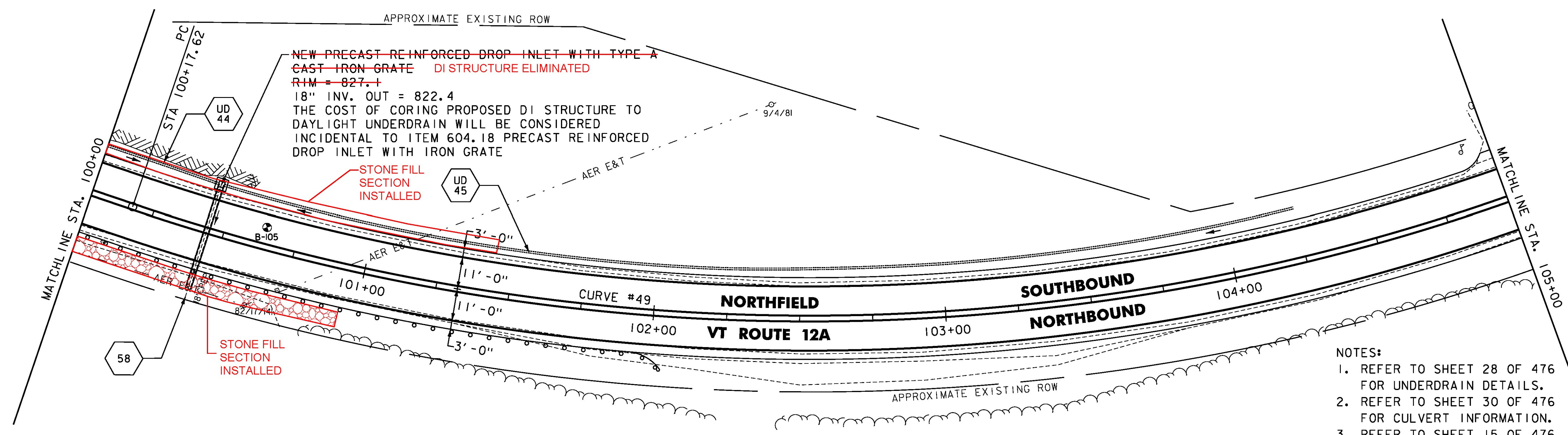
DURABLE 4 INCH WHITE LINE (OPTION BID ITEM)
TEMPORARY 4 INCH WHITE LINE, PAINT
(ALL LINES SHALL INCLUDE EDGE LINE BREAKS
AND RADII FOR SIDE ROADS)
STA. 100+00 TO 105+00, SOLID LT & RT

DURABLE 4 INCH YELLOW LINE (OPTION BID ITEM)
TEMPORARY 4 INCH YELLOW LINE, PAINT
(ALL LINES SHALL INCLUDE CENTER LINE BREAKS
FOR SIDE ROADS)
STA. 100+00 TO 105+00, SOLID LT & RT

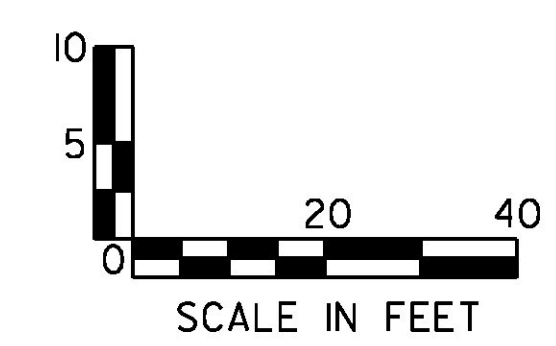
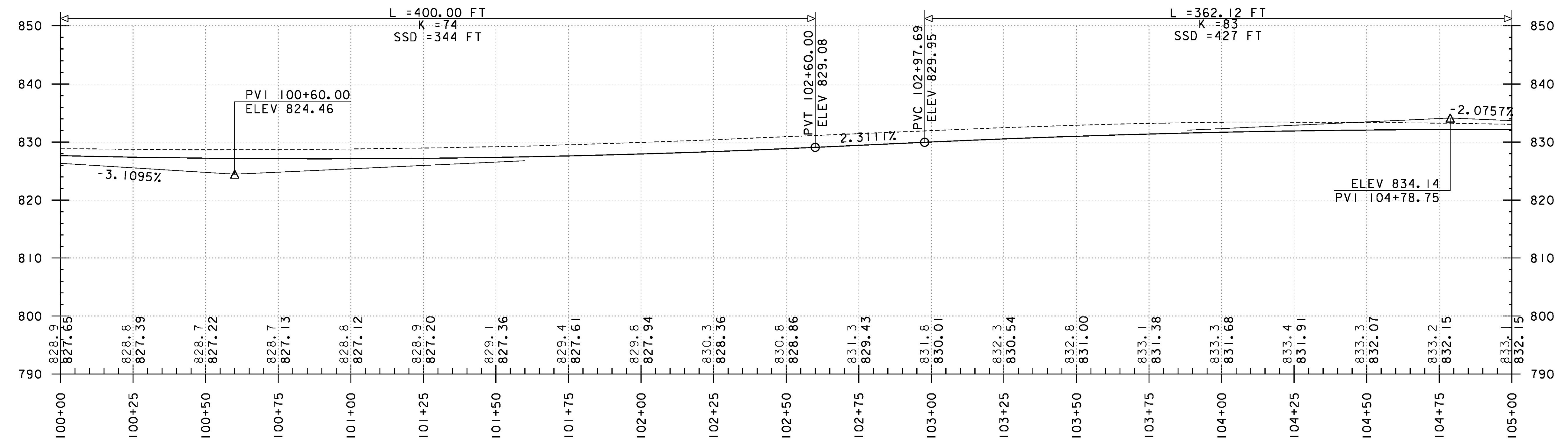
STEEL BEAM GUARDRAIL, GALVANIZED
STA. 101+78.4 TO 102+03.4, RT
STONE FILL, TYPE I & GRUBBING MATERIAL, 6"
STA. 100+00 TO 101+43, LT
STA. 100+00 TO 100+83, RT

STEEL BEAM GUARDRAIL, GALVANIZED
W/8 FEET POSTS
STA. 100+00.0 TO 101+78.4, RT

ANCHOR FOR STEEL BEAM RAIL
STA. 102+03.4, RT



- NOTES:
- REFER TO SHEET 28 OF 476 FOR UNDERDRAIN DETAILS.
 - REFER TO SHEET 30 OF 476 FOR CULVERT INFORMATION.
 - REFER TO SHEET 15 OF 476 FOR CURVE DATA.
 - REFER TO SHEET 17 OF 476 FOR SOIL BORING DATA.



PROJECT NAME:	ROXBURY - NORTHFIELD
PROJECT NUMBER:	ER STP 0187(13)
FILE NAME:	z13cl84bdr.dgn
PROJECT LEADER:	M. FOISY
DESIGNED BY:	G. BURGMEIER
PLANNING & PROFILE SHEET 80	
PLOT DATE:	5/25/2016
DRAWN BY:	G. BARRETT
CHECKED BY:	G. EDWARDS
SHEET	130 OF 476