

STONE FILL TYPE I & GRUBBING MATERIAL (6")  
~~STA. 48+00 TO 48+50, RT~~  
 STA. 49+94 TO 50+00, RT

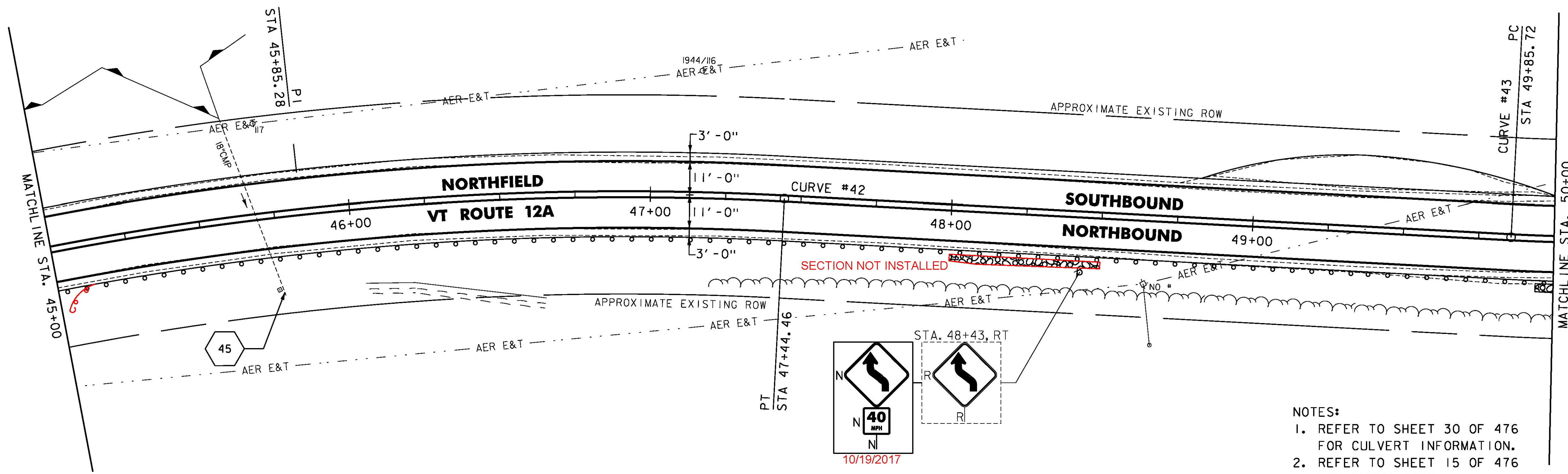
DURABLE 4 INCH WHITE LINE (OPTION BID ITEM)  
 TEMPORARY 4 INCH WHITE LINE, PAINT  
 (ALL LINES SHALL INCLUDE EDGE LINE BREAKS AND RADII FOR SIDE ROADS)  
 STA. 45+00 TO 50+00, SOLID LT & RT

DURABLE 4 INCH YELLOW LINE (OPTION BID ITEM)  
 TEMPORARY 4 INCH YELLOW LINE, PAINT  
 (ALL LINES SHALL INCLUDE CENTER LINE BREAKS FOR SIDE ROADS)  
 STA. 45+00 TO 50+00, SOLID LT & RT

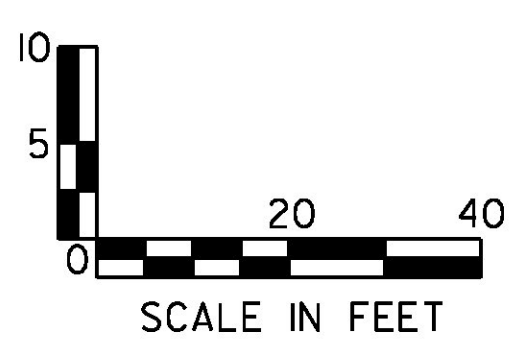
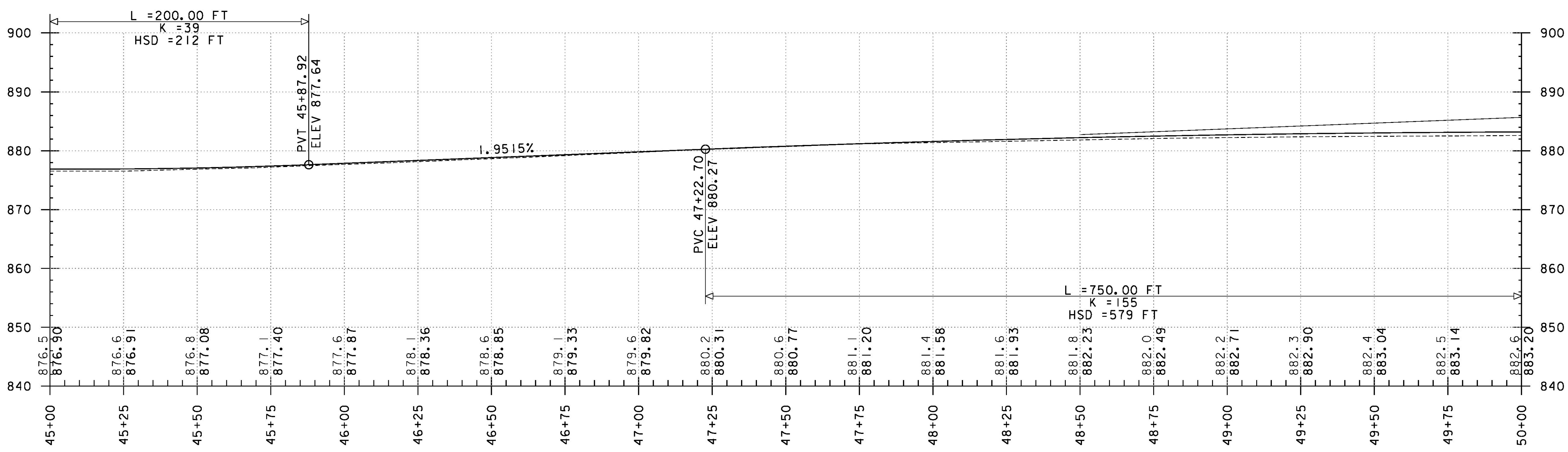
REMOVING SIGNS  
 AS SHOWN - 1  
  
 MILLED RUMBLE STRIPS  
 STA. 45+00 TO 50+00, C

STEEL BEAM GUARDRAIL, GALVANIZED  
~~STA. 49+25.9 TO 49+50.9, RT~~  
~~45+00.0 TO 45+25.0, RT~~  
  
 STEEL BEAM GUARDRAIL, GALVANIZED  
 W/8 FEET POSTS  
~~STA. 45+00.0 TO 49+25.9, RT~~  
~~25.0 50+00.0~~

ANCHOR FOR STEEL BEAM RAIL  
 STA. 49+50.9, RT  
 45+00.0, RT



NOTES:  
 1. REFER TO SHEET 30 OF 476 FOR CULVERT INFORMATION.  
 2. REFER TO SHEET 15 OF 476 FOR CURVE DATA.



PROJECT NAME: ROXBURY - NORTHFIELD  
 PROJECT NUMBER: ER STP 0187(13)  
 FILE NAME: z13cl84bdr.dgn  
 PROJECT LEADER: M. FOISY  
 DESIGNED BY: G. BURGMIEIER  
 PLAN & PROFILE SHEET 69  
 PLOT DATE: 5/25/2016  
 DRAWN BY: G. BARRETT  
 CHECKED BY: G. EDWARDS  
 SHEET 119 OF 476