

STONE FILL TYPE I & GRUBBING MATERIAL (6")
 STA. 10+00 TO 13+06, LT
 STA. 10+50 TO 11+00, RT
 STA. 14+15 TO 15+00, RT

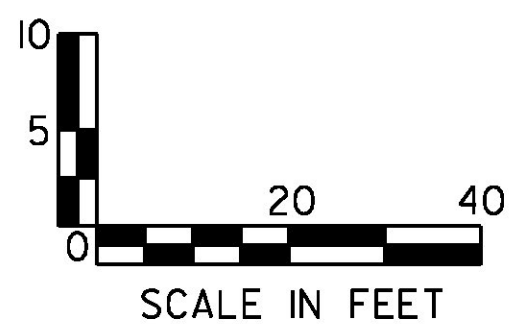
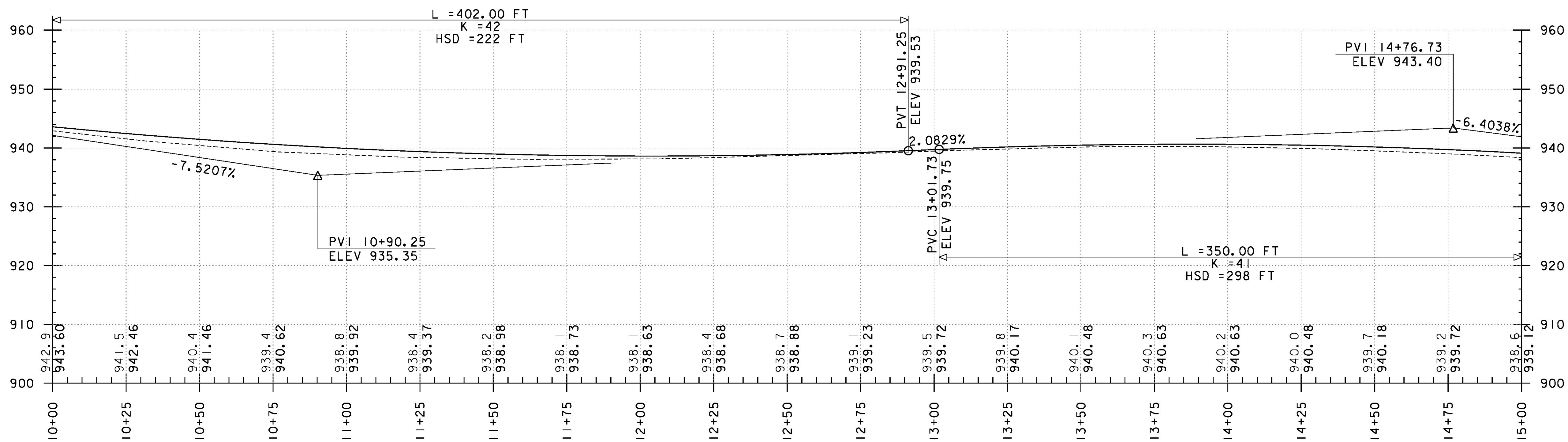
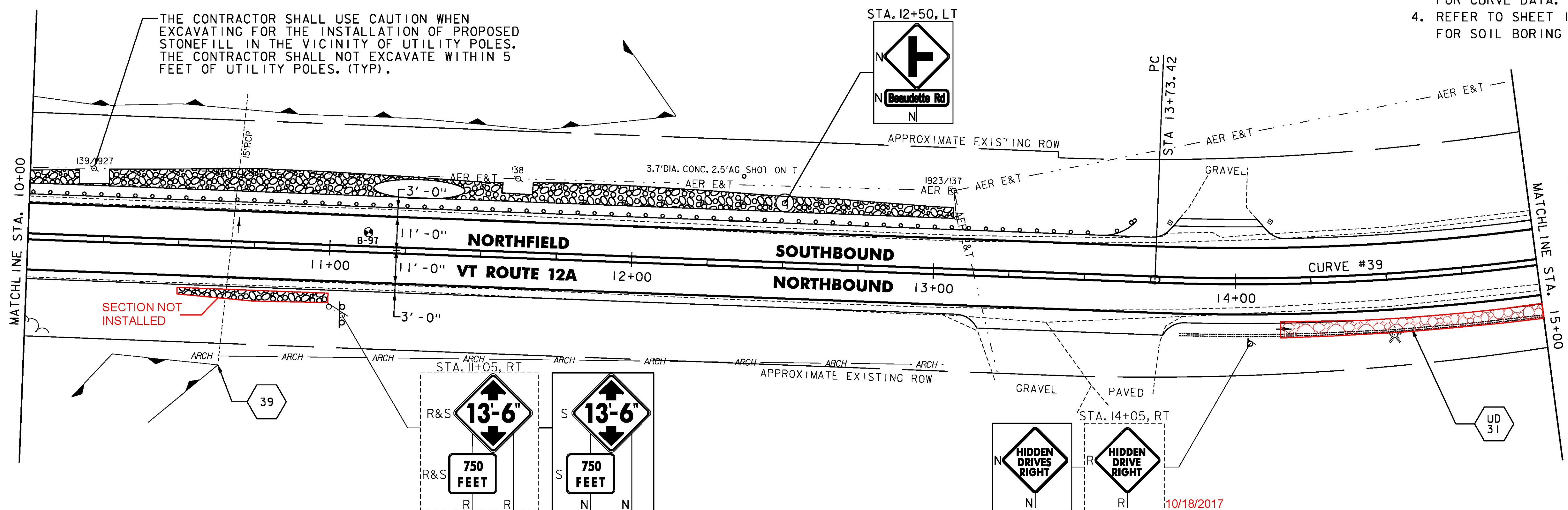
DURABLE 4 INCH WHITE LINE (OPTION BID ITEM)
 TEMPORARY 4 INCH WHITE LINE, PAINT
 (ALL LINES SHALL INCLUDE EDGE LINE BREAKS AND RADII FOR SIDE ROADS)
 STA. 10+00 TO 15+00, SOLID LT & RT

DURABLE 4 INCH YELLOW LINE (OPTION BID ITEM)
 TEMPORARY 4 INCH YELLOW LINE, PAINT
 (ALL LINES SHALL INCLUDE CENTER LINE BREAKS FOR SIDE ROADS)
 STA. 10+00 TO 15+00, SOLID LT & RT

REMOVING SIGNS
 AS SHOWN - 3
 ERECTING SALVAGED SIGNS
 AS SHOWN - 2
 MILLED RUMBLE STRIPS
 STA. 10+00 TO 14+00, C

STEEL BEAM GUARDRAIL, GALVANIZED
 STA. 10+00.0 TO 13+66.0, LT
 ANCHOR FOR STEEL BEAM RAIL
 STA. 13+66.0, LT

- NOTES:
1. REFER TO SHEET 27 OF 476 FOR UNDERDRAIN DETAILS.
 2. REFER TO SHEET 30 OF 476 FOR CULVERT INFORMATION.
 3. REFER TO SHEET 15 OF 476 FOR CURVE DATA.
 4. REFER TO SHEET 17 OF 476 FOR SOIL BORING DATA.



PROJECT NAME: ROXBURY - NORTHFIELD
 PROJECT NUMBER: ER STP 0187(13)

FILE NAME: z13cl84bdr.dgn
 PROJECT LEADER: M. FOISY
 DESIGNED BY: G. BURGMEIER
 PLAN & PROFILE SHEET 62

PLOT DATE: 5/25/2016
 DRAWN BY: G. BARRETT
 CHECKED BY: G. EDWARDS
 SHEET 112 OF 476