

DURABLE 4 INCH WHITE LINE (OPTION BID ITEM)  
 TEMPORARY 4 INCH WHITE LINE, PAINT  
 (ALL LINES SHALL INCLUDE EDGE LINE BREAKS AND RADI FOR SIDE ROADS)  
 STA. 4+50 TO 10+00, SOLID LT & RT  
 STA. 4+94, RT (EVANS RD)

DURABLE 4 INCH YELLOW LINE (OPTION BID ITEM)  
 TEMPORARY 4 INCH YELLOW LINE, PAINT  
 (ALL LINES SHALL INCLUDE CENTER LINE BREAKS FOR SIDE ROADS)  
 STA. 4+50 TO 10+00, SOLID LT & RT  
 STA. 4+94, DOUBLE SOLID RT (EVANS RD)

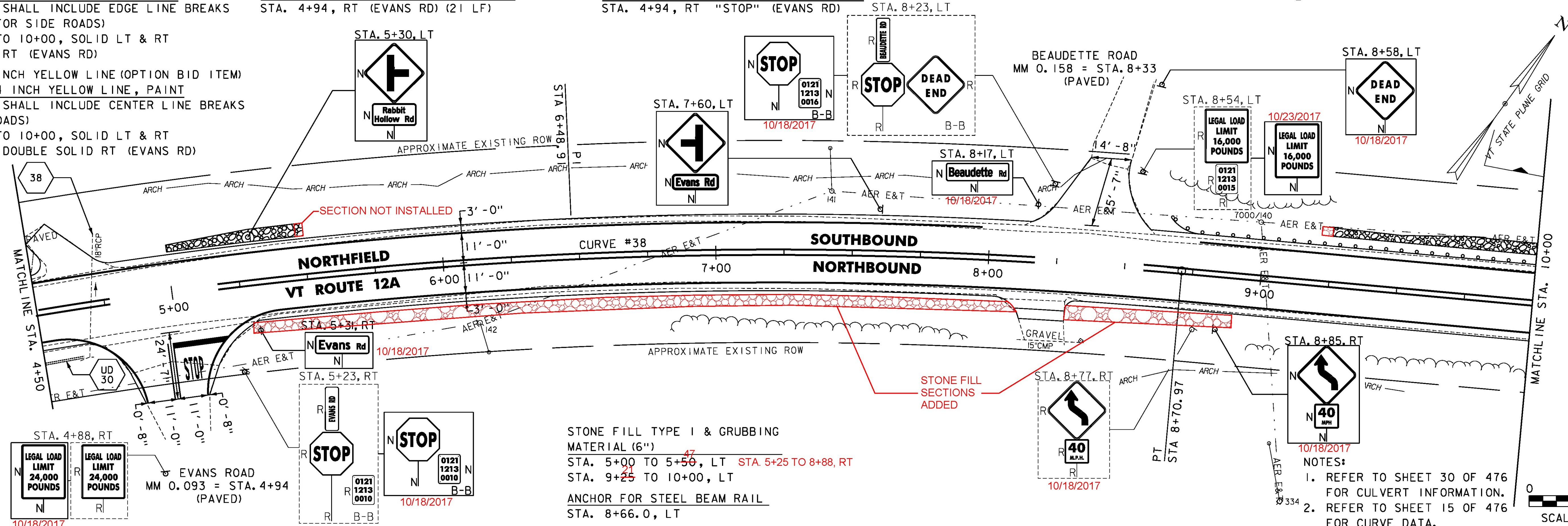
DURABLE 24 INCH STOP BAR (OPTION BID ITEM)  
 TEMPORARY 24 INCH STOP BAR, PAINT  
 STA. 4+94, RT (EVANS RD) (21 LF)

DURABLE LETTER OR SYMBOL (OPTION BID ITEM)  
 TEMPORARY LETTER OR SYMBOL, PAINT  
 STA. 4+94, RT "STOP" (EVANS RD)

REMOVING SIGNS  
 AS SHOWN - 11

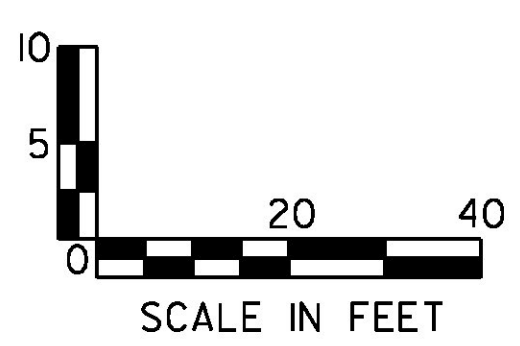
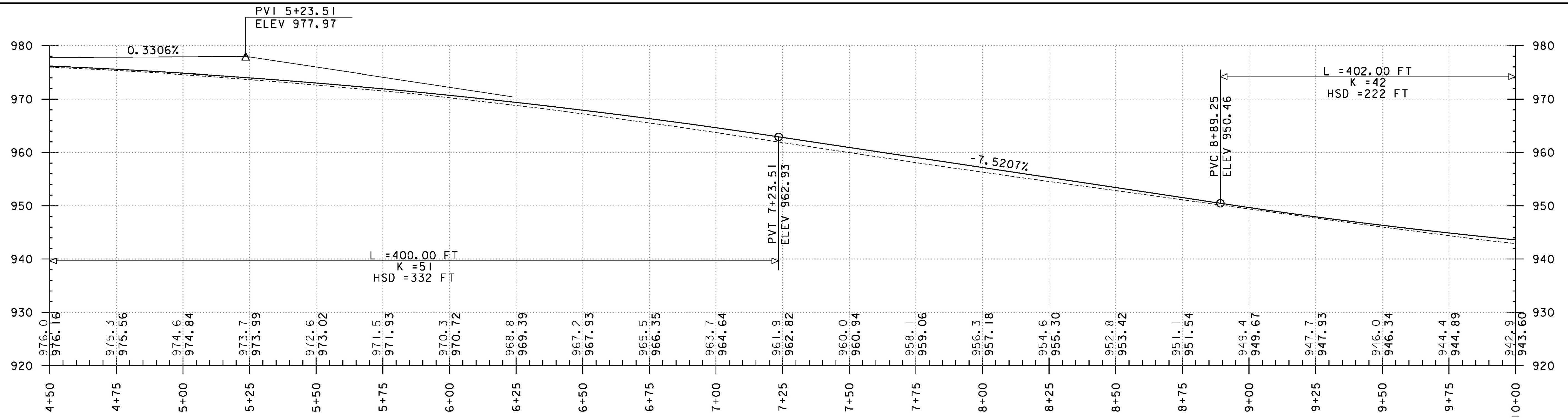
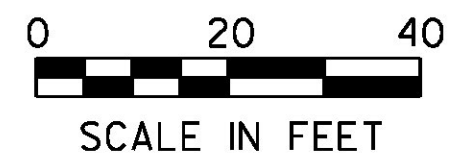
MILLED RUMBLE STRIPS  
 STA. 8+58 TO 10+00, C

STEEL BEAM GUARDRAIL, GALVANIZED  
 STA. 8+66.0 TO 10+00.0, LT



STONE FILL TYPE I & GRUBBING MATERIAL (6")  
 STA. 5+00 TO 5+50, LT STA. 5+25 TO 8+88, RT  
 STA. 9+25 TO 10+00, LT  
 ANCHOR FOR STEEL BEAM RAIL  
 STA. 8+66.0, LT

NOTES:  
 1. REFER TO SHEET 30 OF 476 FOR CULVERT INFORMATION.  
 2. REFER TO SHEET 15 OF 476 FOR CURVE DATA.



PROJECT NAME: ROXBURY - NORTHFIELD  
 PROJECT NUMBER: ER STP 0187(13)  
 FILE NAME: z13cl84bdr.dgn  
 PROJECT LEADER: M. FOISY  
 DESIGNED BY: G. BURGMEIER  
 PLAN & PROFILE SHEET 61  
 PLOT DATE: 5/25/2016  
 DRAWN BY: G. BARRETT  
 CHECKED BY: G. EDWARDS  
 SHEET III OF 476