

RELOCATE MAILBOX, SINGLE SUPPORT
 STA. 3+43, RT
 STA. 3+46, RT

STONE FILL TYPE I & GRUBBING MATERIAL (6")
 STA. 0+20 TO 2+25, LT

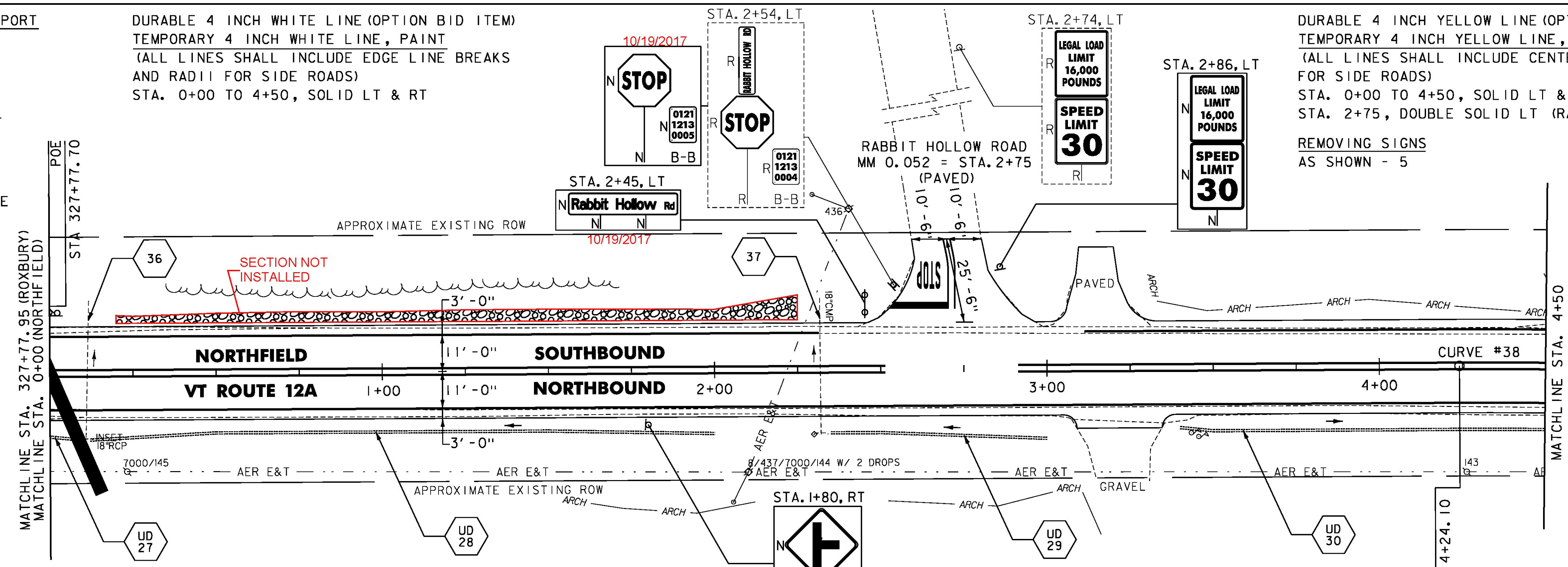
MILLED RUMBLE STRIPS
 STA. 0+00 TO 2+52, C

CLEANING CULV. PIPE, IN-PLACE (0 TO 24IN., INCL.)
 CULVERT #36, 41LF
 CULVERT #37, 41LF
 CULVERT #38, 46LF

DURABLE 4 INCH WHITE LINE (OPTION BID ITEM)
 TEMPORARY 4 INCH WHITE LINE, PAINT
 (ALL LINES SHALL INCLUDE EDGE LINE BREAKS AND RADII FOR SIDE ROADS)
 STA. 0+00 TO 4+50, SOLID LT & RT

DURABLE 4 INCH YELLOW LINE (OPTION BID ITEM)
 TEMPORARY 4 INCH YELLOW LINE, PAINT
 (ALL LINES SHALL INCLUDE CENTER LINE BREAKS FOR SIDE ROADS)
 STA. 0+00 TO 4+50, SOLID LT & RT
 STA. 2+75, DOUBLE SOLID LT (RABBIT HOLLOW RD)

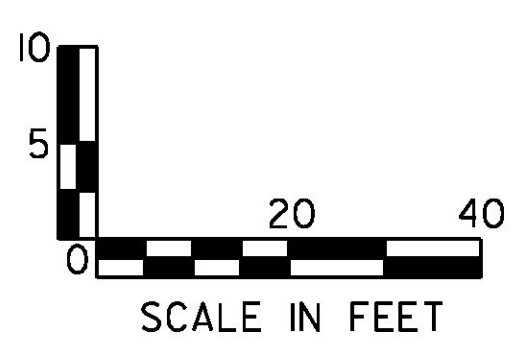
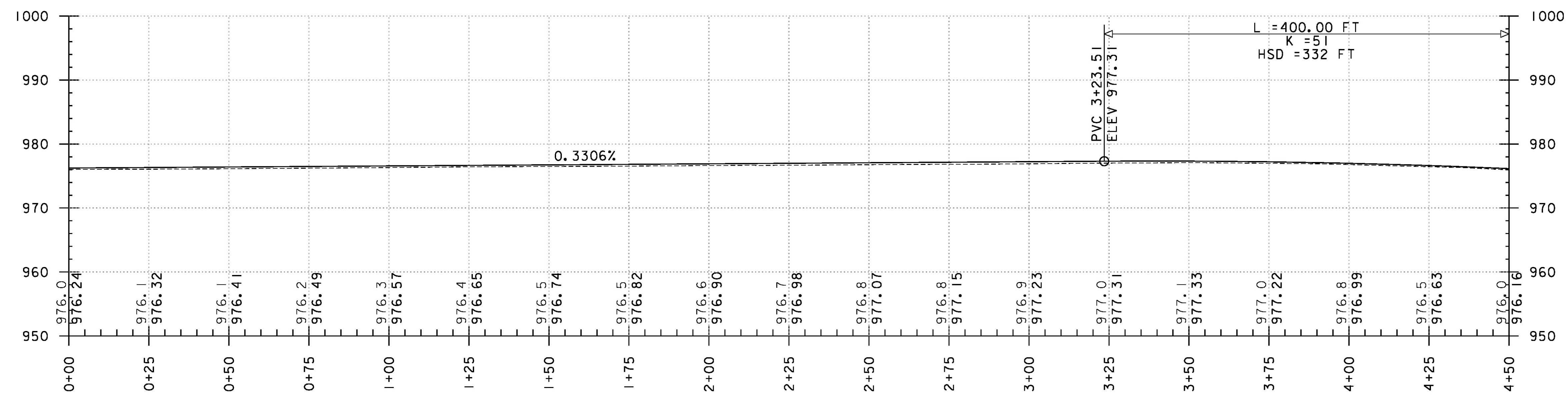
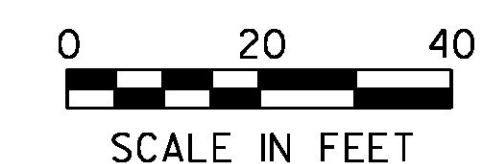
REMOVING SIGNS AS SHOWN - 5



DURABLE 24 INCH STOP BAR, THERMOPLASTIC
 DURABLE 24 INCH STOP BAR, POLYUREA
 TEMPORARY 24 INCH STOP BAR, PAINT
 STA. 2+75, LT (RABBIT HOLLOW RD) (18 LF)

DURABLE LETTER OR SYMBOL, THERMOPLASTIC
 DURABLE LETTER OR SYMBOL, POLYUREA
 TEMPORARY LETTER OR SYMBOL, PAINT
 STA. 2+75, LT "STOP" (RABBIT HOLLOW RD)

- NOTES:
- REFER TO SHEET 27 OF 476 FOR UNDERDRAIN DETAILS.
 - REFER TO SHEET 30 OF 476 FOR CULVERT INFORMATION.
 - REFER TO SHEET 15 OF 476 FOR CURVE DATA.



PROJECT NAME: ROXBURY - NORTHFIELD	PLOT DATE: 5/25/2016
PROJECT NUMBER: ER STP 0187(13)	DRAWN BY: G. BARRETT
FILE NAME: z13cl84bdr.dgn	CHECKED BY: G. EDWARDS
DESIGNED BY: G. BURGMEIER	SHEET 110 OF 476
PLAN & PROFILE SHEET 60	