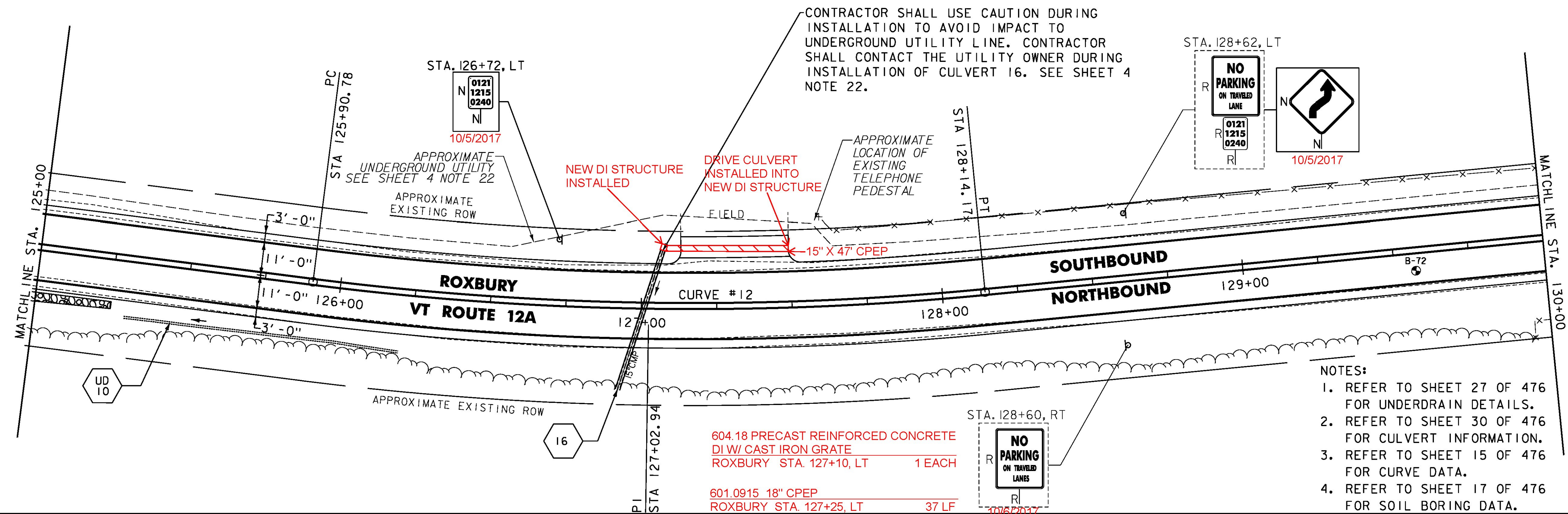
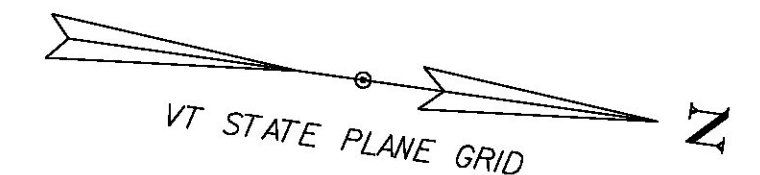


STONE FILL TYPE I & GRUBBING
MATERIAL (6")
STA. 125+00 TO 125+25, RT

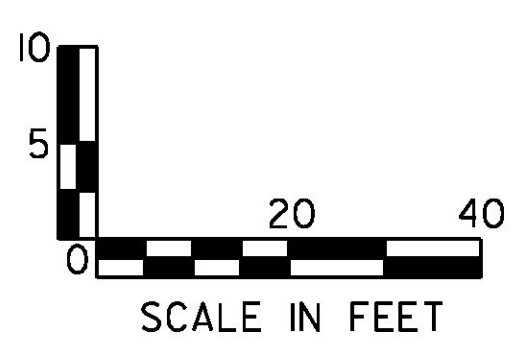
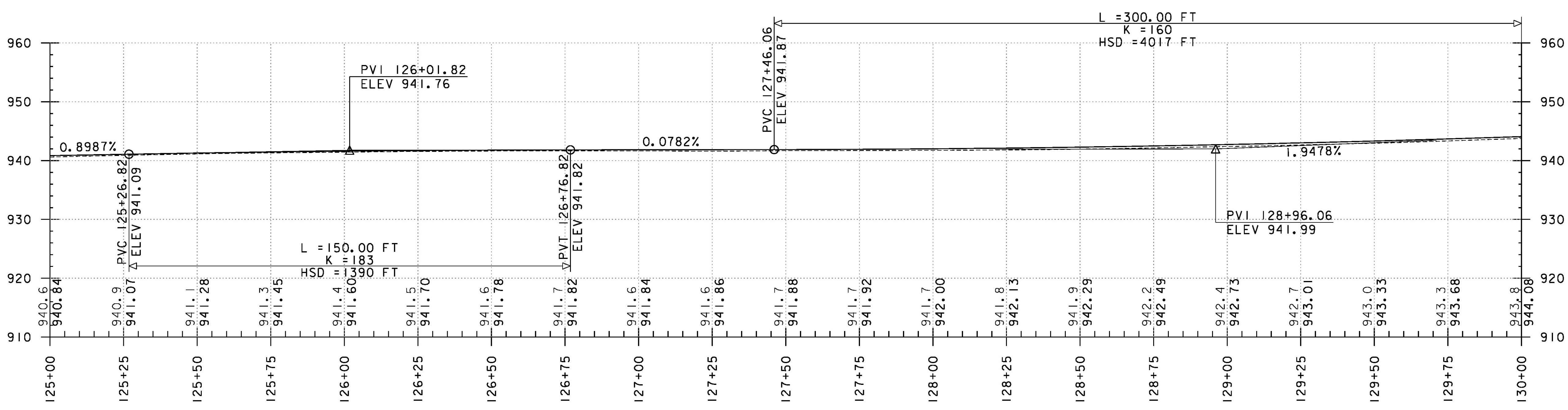
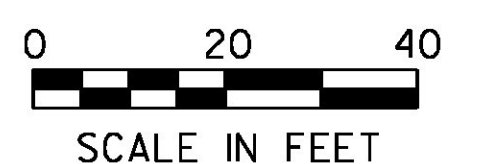
DURABLE 4 INCH WHITE LINE (OPTION BID ITEM)
TEMPORARY 4 INCH WHITE LINE, PAINT
(ALL LINES SHALL INCLUDE EDGE LINE BREAKS
AND RADII FOR SIDE ROADS)
STA. 125+00 TO 130+00, SOLID LT & RT

DURABLE 4 INCH YELLOW LINE (OPTION BID ITEM)
TEMPORARY 4 INCH YELLOW LINE, PAINT
(ALL LINES SHALL INCLUDE CENTER LINE BREAKS
FOR SIDE ROADS)
STA. 125+00 TO 130+00, SOLID LT & RT

REMOVING SIGNS
AS SHOWN - 3



- NOTES:
1. REFER TO SHEET 27 OF 476 FOR UNDERDRAIN DETAILS.
 2. REFER TO SHEET 30 OF 476 FOR CULVERT INFORMATION.
 3. REFER TO SHEET 15 OF 476 FOR CURVE DATA.
 4. REFER TO SHEET 17 OF 476 FOR SOIL BORING DATA.



PROJECT NAME:	ROXBURY - NORTHFIELD
PROJECT NUMBER:	ER STP 0187(13)
FILE NAME:	z13cl84bdr.dgn
PROJECT LEADER:	M. FOISY
DESIGNED BY:	G. BURGMEIER
PLAN & PROFILE SHEET I9	
PLOT DATE:	5/25/2016
DRAWN BY:	G. BARRETT
CHECKED BY:	G. EDWARDS
SHEET	69 OF 476