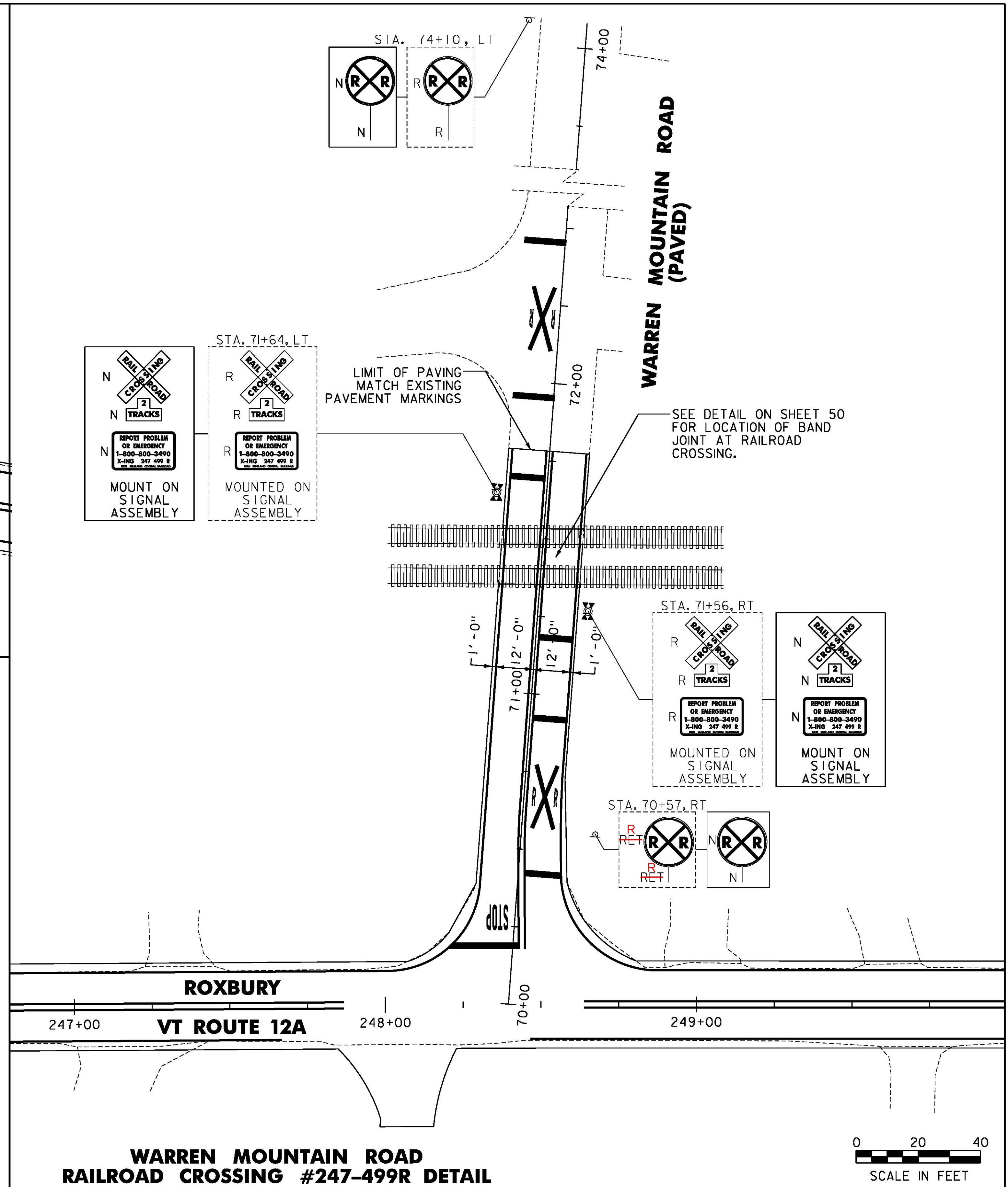
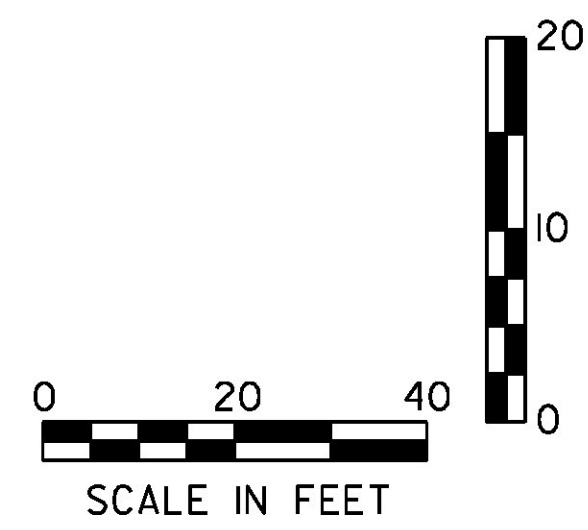
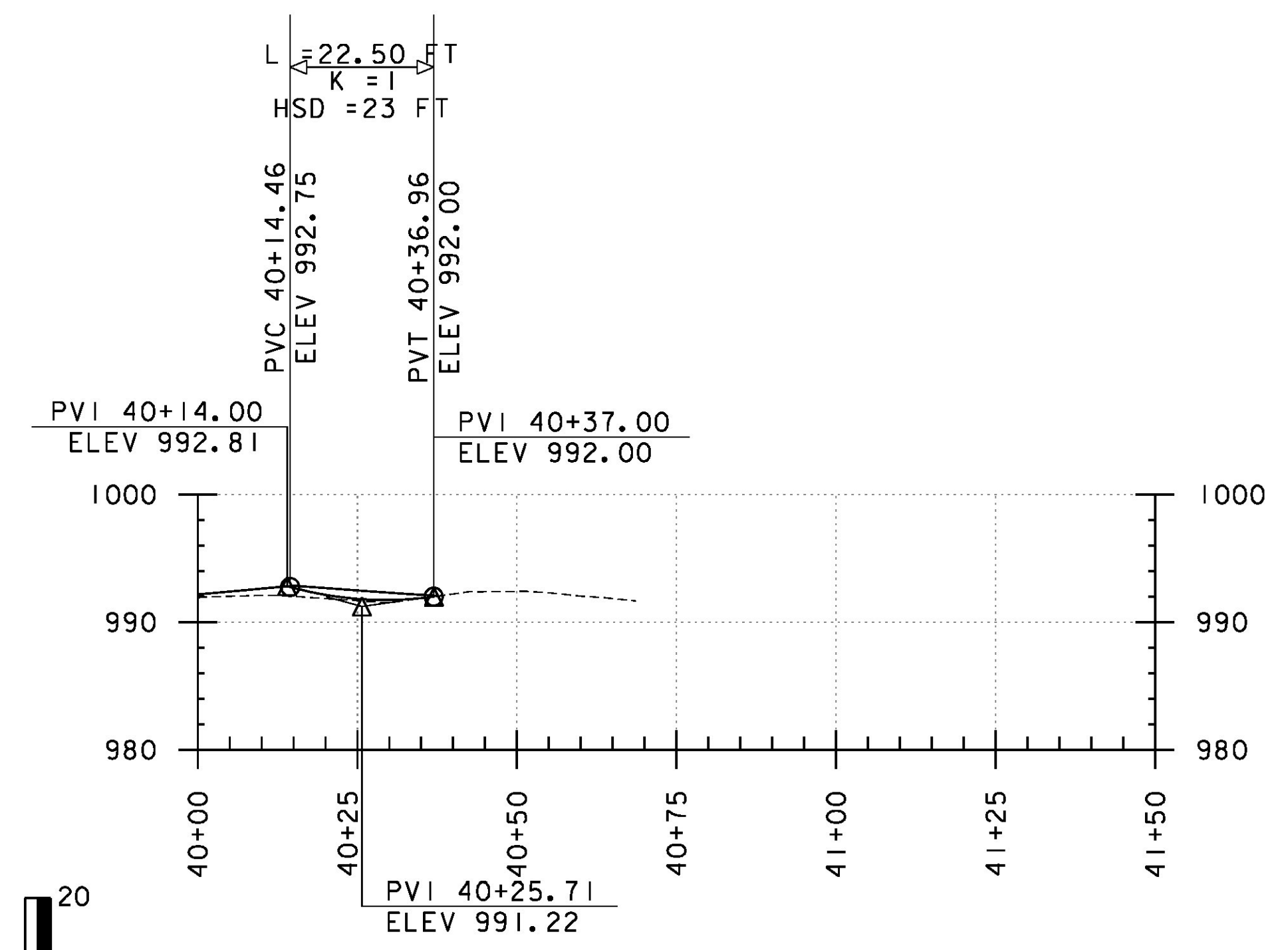


**CARRIE HOWE ROAD RAILROAD CROSSING #247-498J DETAIL ROXBURY STA. 163+93, LT**

REMOVING SIGNS AS SHOWN - 2



**WARREN MOUNTAIN ROAD RAILROAD CROSSING #247-499R DETAIL ROXBURY STA. 248+40, LT**

DURABLE & TEMPORARY RAILROAD CROSSING SYMBOL  
WARREN MOUNTAIN ROAD STA. 70+68, RT  
WARREN MOUNTAIN ROAD STA. 72+20, LT

REMOVING SIGNS AS SHOWN - 7



PROJECT NAME: ROXBURY-NORTHFIELD	PLOT DATE: 5/25/2016
PROJECT NUMBER: ER STP 0187(13)	DRAWN BY: G. BARRETT
FILE NAME: z13ci84typ.dgn	CHECKED BY: G. EDWARDS
DESIGNED BY: G. BARRETT	RAILROAD CROSSING DETAIL SHEET 2 SHEET 49 OF 476