

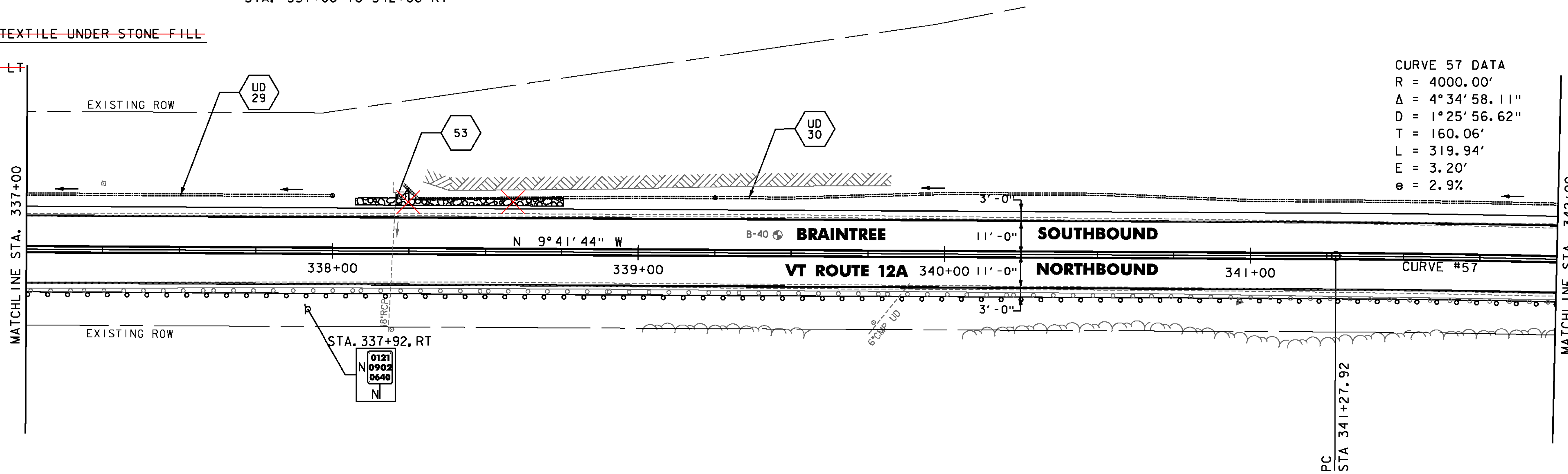
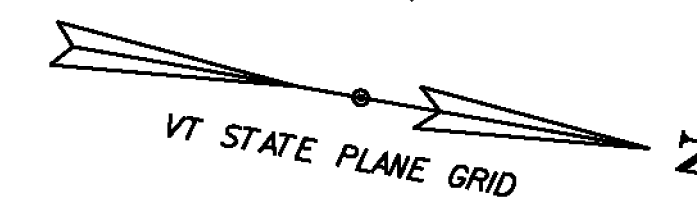
~~SOLID ROCK EXCAVATION~~  
~~STA. 338+30 TO 339+85, LT~~  
~~UNDERDRAIN FLUSHING BASIN~~  
~~STA. 338+00, LT~~  
~~STA. 339+25, LT~~  
~~STONE FILL TYPE I, GEOTEXTILE UNDER STONE FILL~~  
~~& GRUBBING MATERIAL~~  
~~STA. 338+07 TO 338+75, LT~~

STEEL BEAM GUARDRAIL, GALVANIZED W/ 8 FEET POSTS  
 STA. 337+00.0 TO 342+00.0, RT  
 REMOVAL AND DISPOSAL OF GUARDRAIL  
 STA. 337+00 TO 342+00 RT

DURABLE 4 INCH WHITE LINE, THERMOPLASTIC  
 DURABLE 4 INCH WHITE LINE, POLYUREA  
 TEMPORARY 4 INCH WHITE LINE, PAINT  
 STA. 337+00 TO 342+00, SOLID LT & RT

DURABLE 4 INCH YELLOW LINE, THERMOPLASTIC  
 DURABLE 4 INCH YELLOW LINE, POLYUREA  
 TEMPORARY 4 INCH YELLOW LINE, PAINT  
 STA. 337+00 TO 342+00, SOLID LT & RT

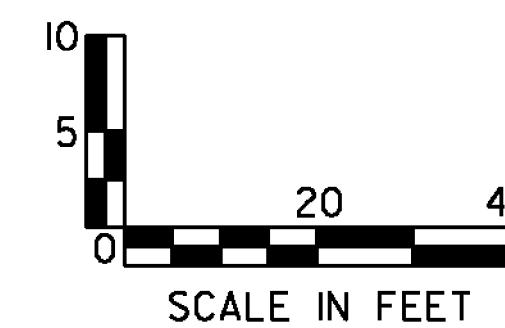
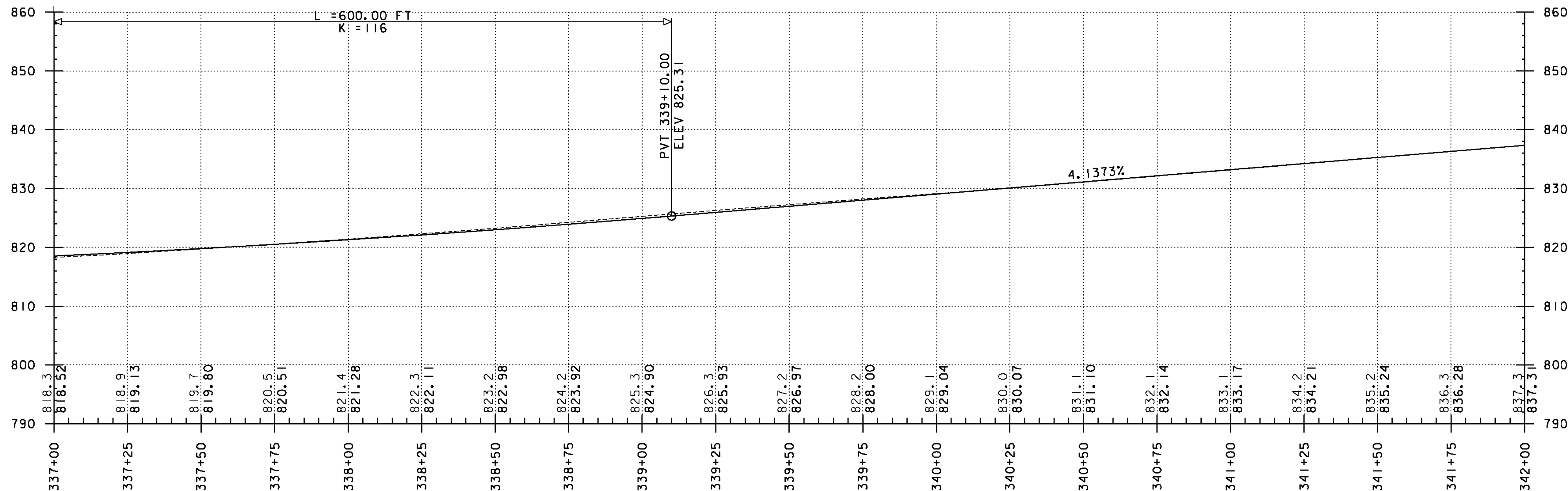
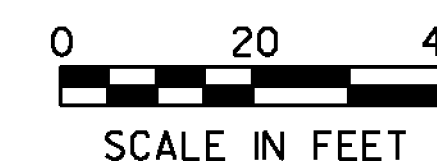
EROSION LOG  
 STA. 337+00 TO 342+00, LT



SOIL BORING DATA			
BORING*	DEPTH (FT.)	PCC	COMMENTS
B-40	3.5'	NO	

UD 30 STA 338+25, LT TO 342+25, LT  
 CONSTRUCT 6 INCH UNDERDRAIN PIPE,  
 SEE SHEET 8 FOR DETAIL AND  
 ASSOCIATED QUANTITIES.

NOTE:  
 1. REFER TO SHEET 27 OF 545  
 FOR CULVERT INFORMATION.



PROJECT NAME: RANDOLPH-ROXBURY  
 PROJECT NUMBER: ER STP 0187(II)

FILE NAME: z13cl82bdr.dgn  
 PROJECT LEADER: M. FOISY  
 DESIGNED BY: I. MAYNARD

PLOT DATE: 11/17/2014  
 DRAWN BY: G. BURGMEIER  
 CHECKED BY: M. FOISY

PLAN & PROFILE SHEET 77

SHEET 118 OF 545