

UNDERDRAIN FLUSHING BASIN

STA. 177+25, RT STA. 177+04, RT

RELOCATE MAILBOX, SINGLE SUPPORT
STA. 177+56, RT

STEEL BEAM GUARDRAIL, GALVANIZED
STA. 178+54.0 TO 178+79.0, LT

STEEL BEAM GUARDRAIL, GALVANIZED W/ 8 FEET POSTS
STA. 178+79.0 TO 180+00.0, LT

ANCHOR FOR STEEL BEAM RAIL
STA. 178+54.0, LT

REMOVAL AND DISPOSAL OF GUARDRAIL
STA. 178+55 TO 180+00 LT

DURABLE 4 INCH WHITE LINE, THERMOPLASTIC
DURABLE 4 INCH WHITE LINE, POLYUREA
TEMPORARY 4 INCH WHITE LINE, PAINT
STA. 175+00 TO 180+00, SOLID LT & RT

STONE FILL TYPE I, & GRUBBING MATERIAL
STA. 175+00 TO 175+56, LT
STA. 176+27 TO 176+39, LT

DURABLE 4 INCH YELLOW LINE, THERMOPLASTIC
DURABLE 4 INCH YELLOW LINE, POLYUREA
TEMPORARY 4 INCH YELLOW LINE, PAINT
STA. 175+00 TO 180+00, SOLID LT & RT

EROSION LOG
STA. 175+00 TO 176+50, RT

REMOVING SIGNS
AS SHOWN - 4

CURVE 36 DATA

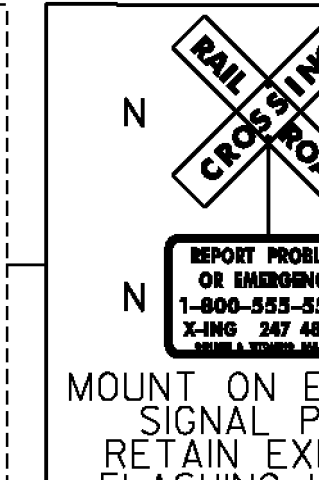
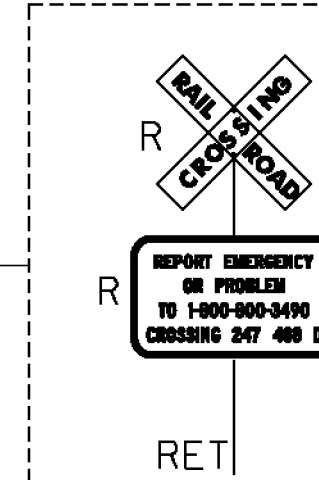
R = 920.00'
Δ = 11° 48' 20.41"
D = 6° 13' 40.09"
T = 95.12'
L = 189.56'
E = 4.90'
e = 3.1%

CURVE 35 DATA

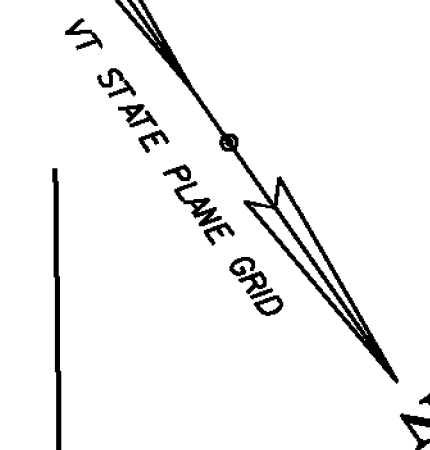
R = 500.00'
Δ = 20° 53' 06.32"
D = 11° 27' 32.96"
T = 92.15'
L = 182.26'
E = 8.42'
e = 4.0%

RETAIN EXISTING
RAILROAD SIGNAL
AND GATES

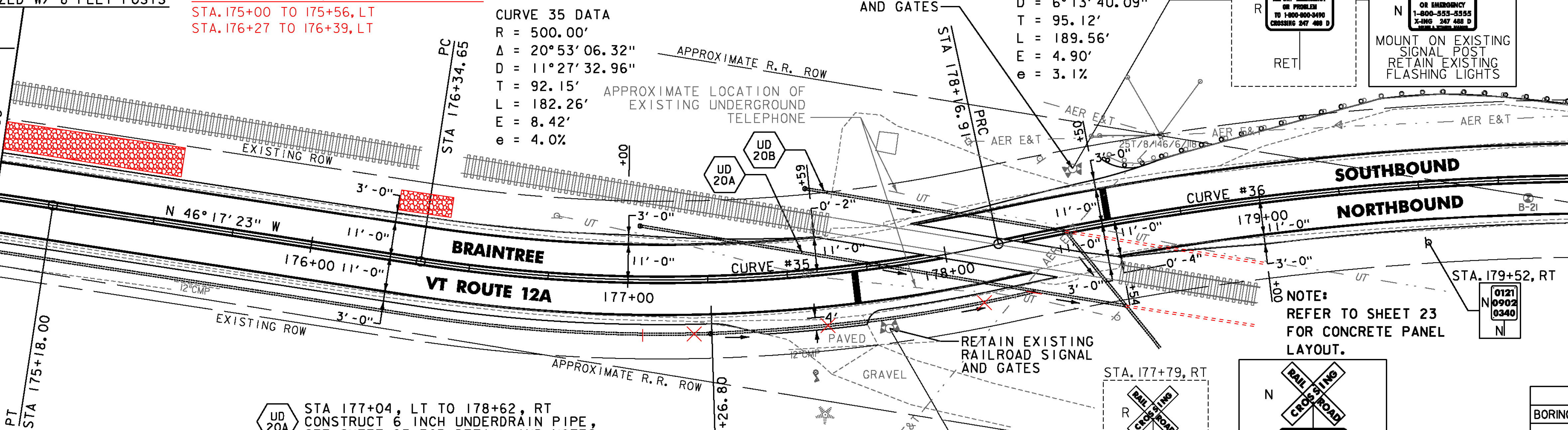
STA. 178+44, LT



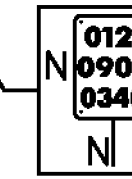
MOUNT ON EXISTING
SIGNAL POST
RETAIN EXISTING
FLASHING LIGHTS



MATCHLINE STA. 175+00
PT STA 175+18.00



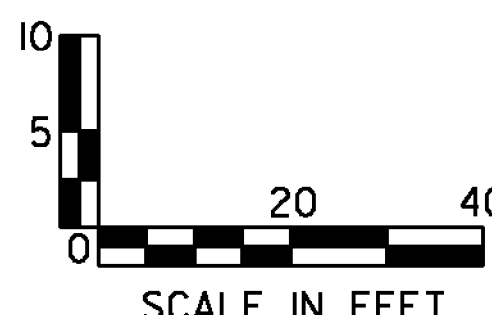
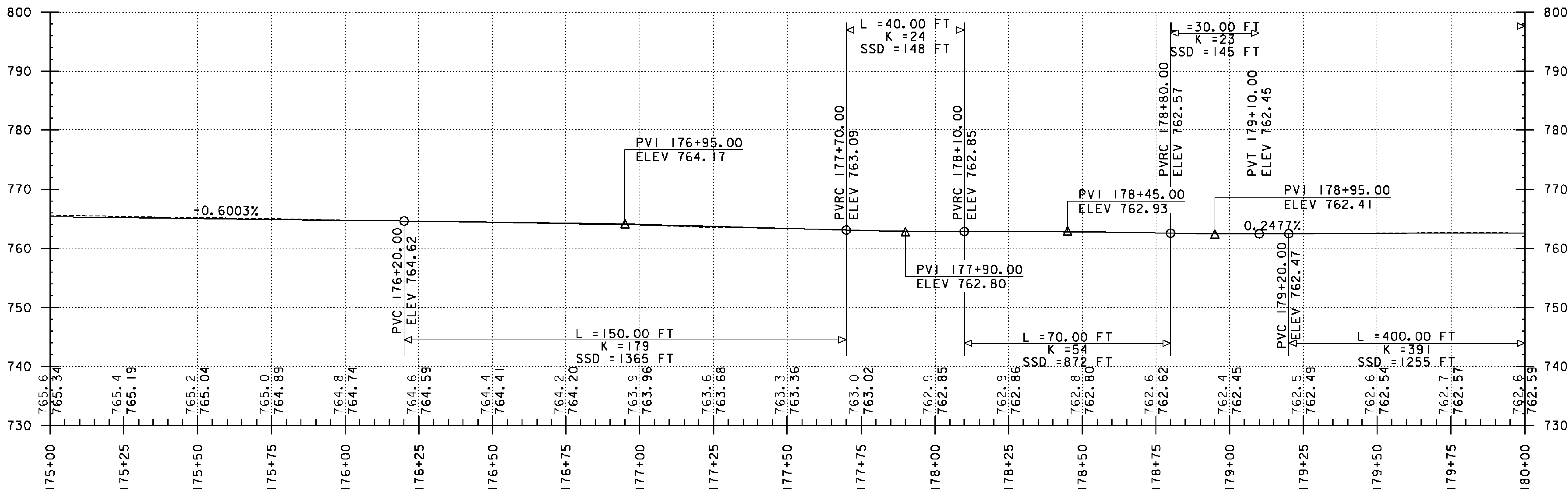
NOTE:
REFER TO SHEET 23
FOR CONCRETE PANEL
LAYOUT.



SOIL BORING DATA			
BORING#	DEPTH (FT.)	PCC	COMMENTS
B-21	5.0'	NO	



- UD 20A STA 177+04, LT TO 178+62, RT
CONSTRUCT 6 INCH UNDERDRAIN PIPE,
SEE SHEET 23 FOR DETAIL AND NOTES.
- UD 20A STA 177+58, LT TO 178+53, RT
CONSTRUCT 6 INCH UNDERDRAIN PIPE,
SEE SHEET 23 FOR DETAIL AND NOTES.



PROJECT NAME: RANDOLPH-ROXBURY
 PROJECT NUMBER: ER STP 0187(II)
 FILE NAME: z13cl82bdr.dgn PLOT DATE: 12/15/2014
 PROJECT LEADER: M. FOISY DRAWN BY: G. BURGMEIER
 DESIGNED BY: I. MAYNARD CHECKED BY: M. FOISY
 PLAN & PROFILE SHEET 45 SHEET 86 OF 545