

GPS/NGS CONTROL POINTS

VTGS DISK C02027

PID DM1729
 N = 531966.76
 E = 1579362.28
 ELEV = 769.55

DESCRIBED BY VERMONT GEODETIC SURVEY 2002. GENERAL LOCATION, BRAINTREE VT. OWNERSHIP, CHARLES KEEHN, 4162 VT ROUTE 12A, BRAINTREE, VT 05060. TO REACH FROM THE INTERSECTION OF VT ROUTE 12 AND VT ROUTE 12A IN RANDOLPH, GO NORTH ALONG VT ROUTE 12A FOR 4.5 MI (7.2 KM) TO THE SITE THE MARK ON THE RIGHT AT THE SOUTHWEST EDGE OF A WOODS. IT IS 0.15 MI (0.2 KM) SOUTH OF THE VT ROUTE 12A CROSSING OF THE NEW ENGLAND CENTRAL RAILROAD. THE MARK IS SET IN A SMALL SHELVE ON THE SOUTHWEST SIDE OF A MASSIVE ROCK OUTCROP. IT IS 29.2 M (95.8 FT) NORTHEAST OF AND ABOUT 0.3 M (1.0 FT) HIGHER THAN THE CENTERLINE OF VT ROUTE 12A, 37.0 M (121.4 FT) NORTHEAST OF POLE NO 141/113, 65.7 M (215.6 FT) EAST SOUTHEAST OF POLE NO 8/142/6P114, AND 0.9 M (3.0 FT) NORTHEAST OF A FIBERGLASS WITNESS POST.

VTAT DISK C02026

PID DM1728
 N = 534106.71
 E = 1576727.85
 ELEV = 766.82

DESCRIBED BY VERMONT GEODETIC SURVEY 2002. GENERAL LOCATION, BRAINTREE, VT. TO REACH FROM THE INTERSECTION OF VT ROUTE 12 AND VT ROUTE 12A IN RANDOLPH, GO NORTH ALONG VT ROUTE 12A FOR 4.7 MI (7.6 KM) TO THE VT ROUTE 12A CROSSING OF THE NEW ENGLAND CENTRAL RAILROAD. CONTINUE STRAIGHT AHEAD AND GO NORTH ALONG VT ROUTE 12A FOR 0.5 MI (0.8 KM) TO THE SOUTH END OF THE VT ROUTE 12A BRIDGE OVER THE THIRD BRANCH OF THE WHITE RIVER AND THE SITE OF THE MARK ON THE RIGHT, SET IN THE TOP OF THE WING WALL AT THE SOUTHWEST CORNER OF THE BRIDGE, DIRECTLY ABOVE THE BRIDGE DATE PLAQUE. IT IS ABOUT 35 M (114.8 FT) NORTH OF THE INTERSECTION OF VT ROUTE 12A AND GRANTSWORTH ROAD RIGHT AND 0.65 MI (1.0 KM) SOUTH OF THE INTERSECTION OF VT ROUTE 12A AND NORTH ROAD IN WEST BRAINTREE VILLAGE. IT IS 6.3 M (20.7 FT) EAST OF AND ABOUT 0.3 M (1.0 FT) LOWER THE CENTERLINE OF VT ROUTE 12A, 1.3 M (4.3 FT) EAST OF THE EAST EDGE OF THE BRIDGE CURB, 0.3 M (1.0 FT) SOUTHWEST OF THE NORTHWEST FACE OF THE ABUTMENT AND 0.3 M (1.0 FT) SOUTHWEST OF THE NORTHEAST EDGE OF THE ABUTMENT.

VTAT DISK BRAINDEAD

PID AB4455
 N = 543049.42
 E = 1573849.56
 ELEV = 802.88

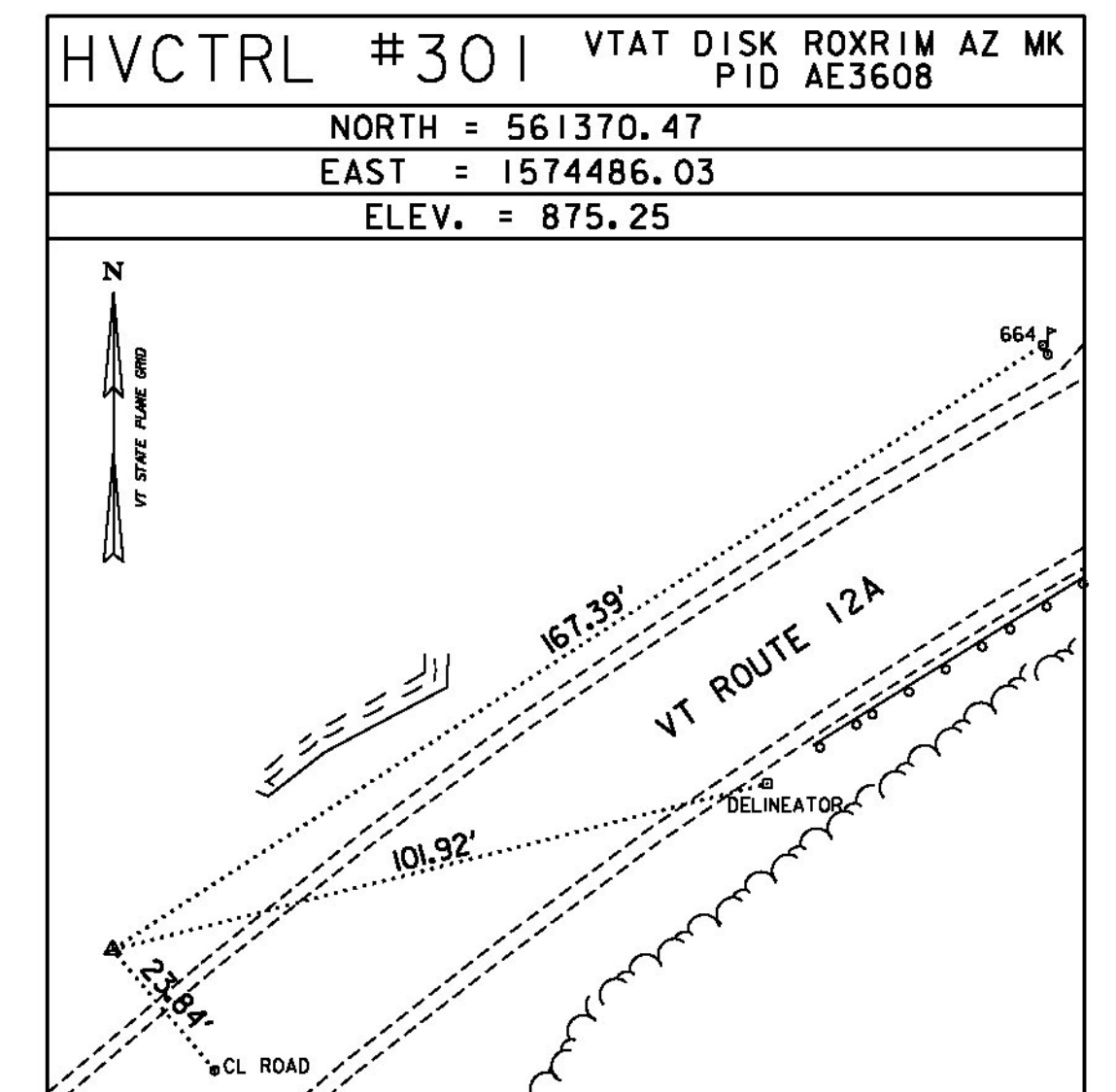
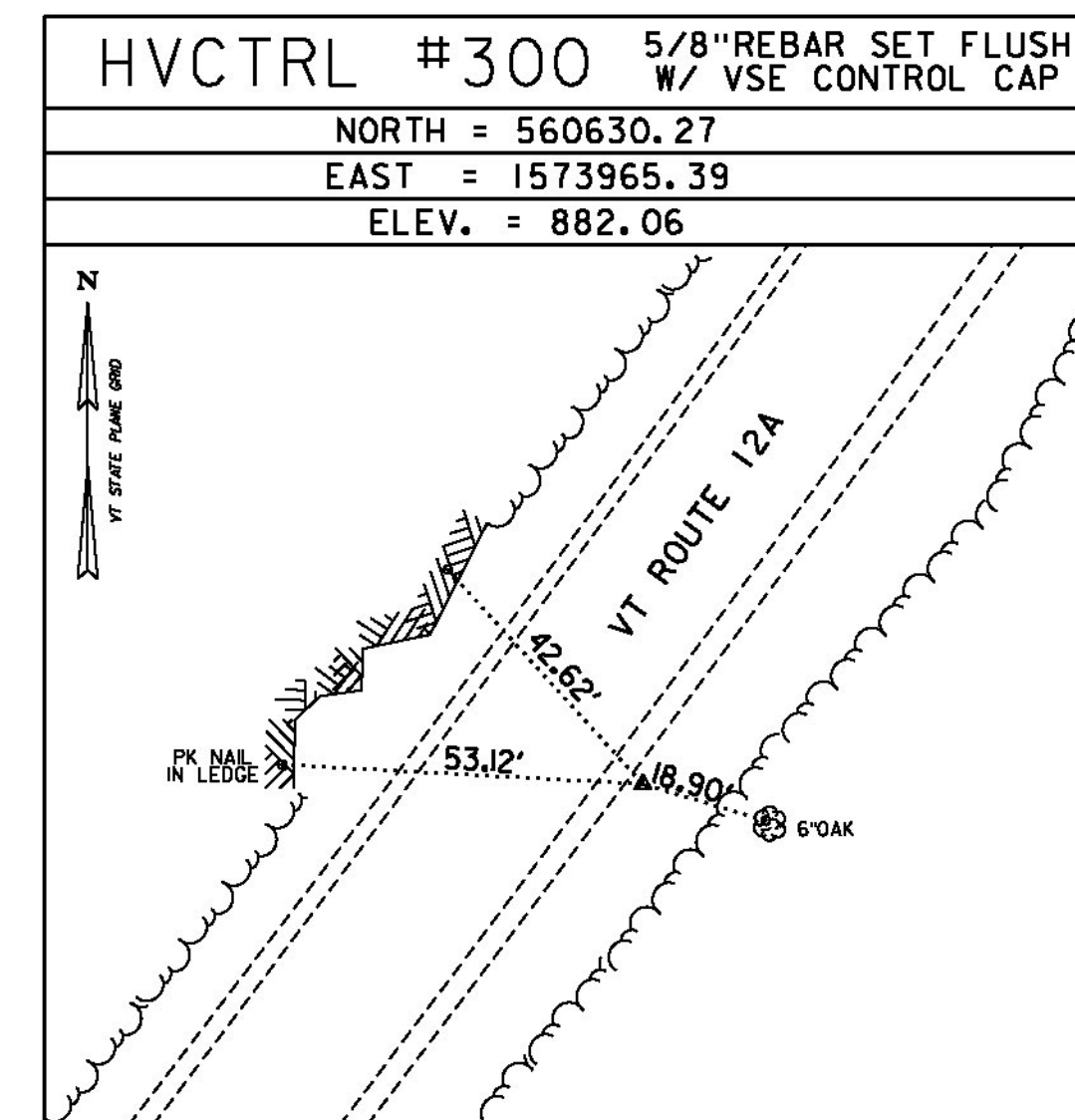
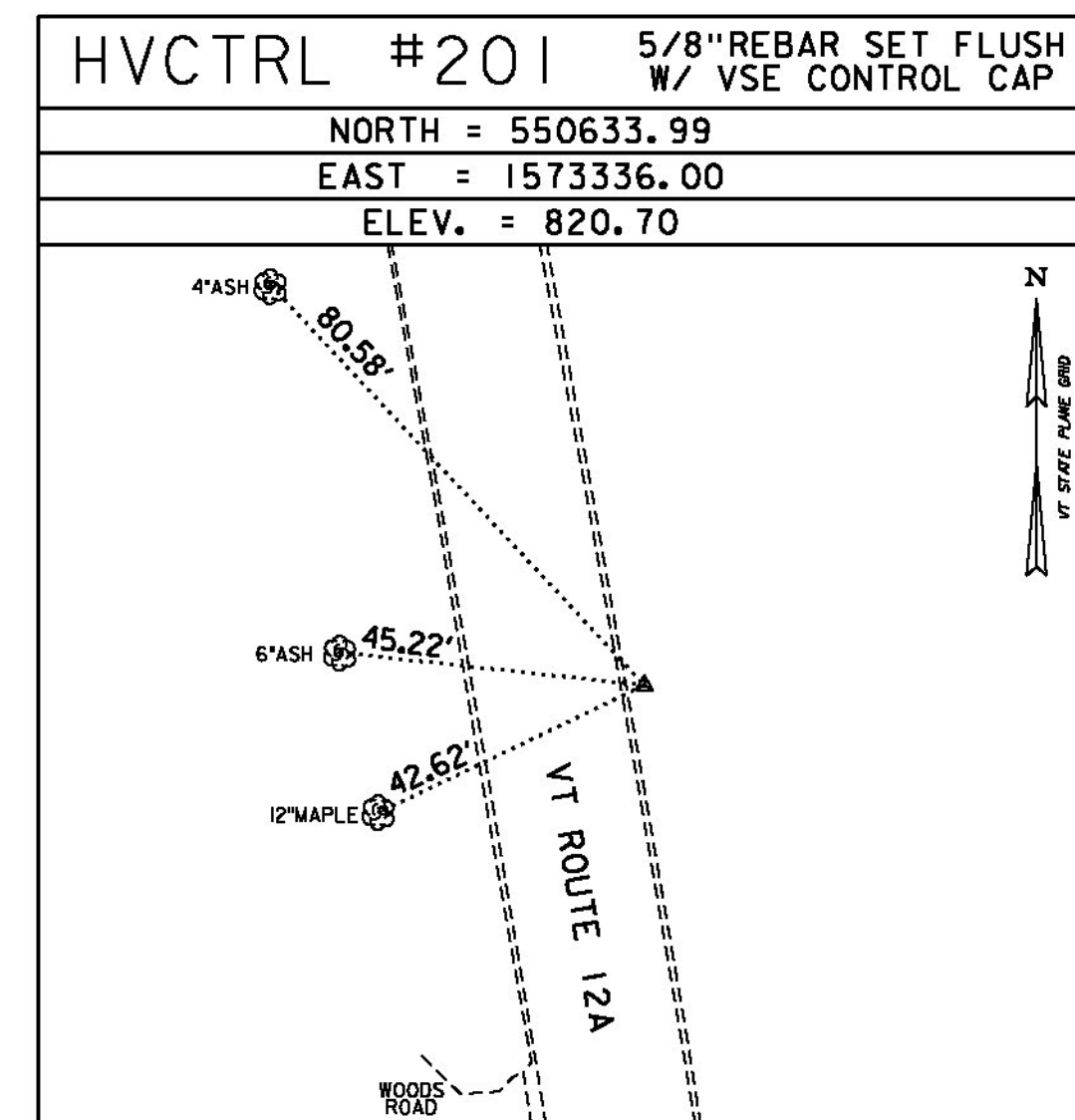
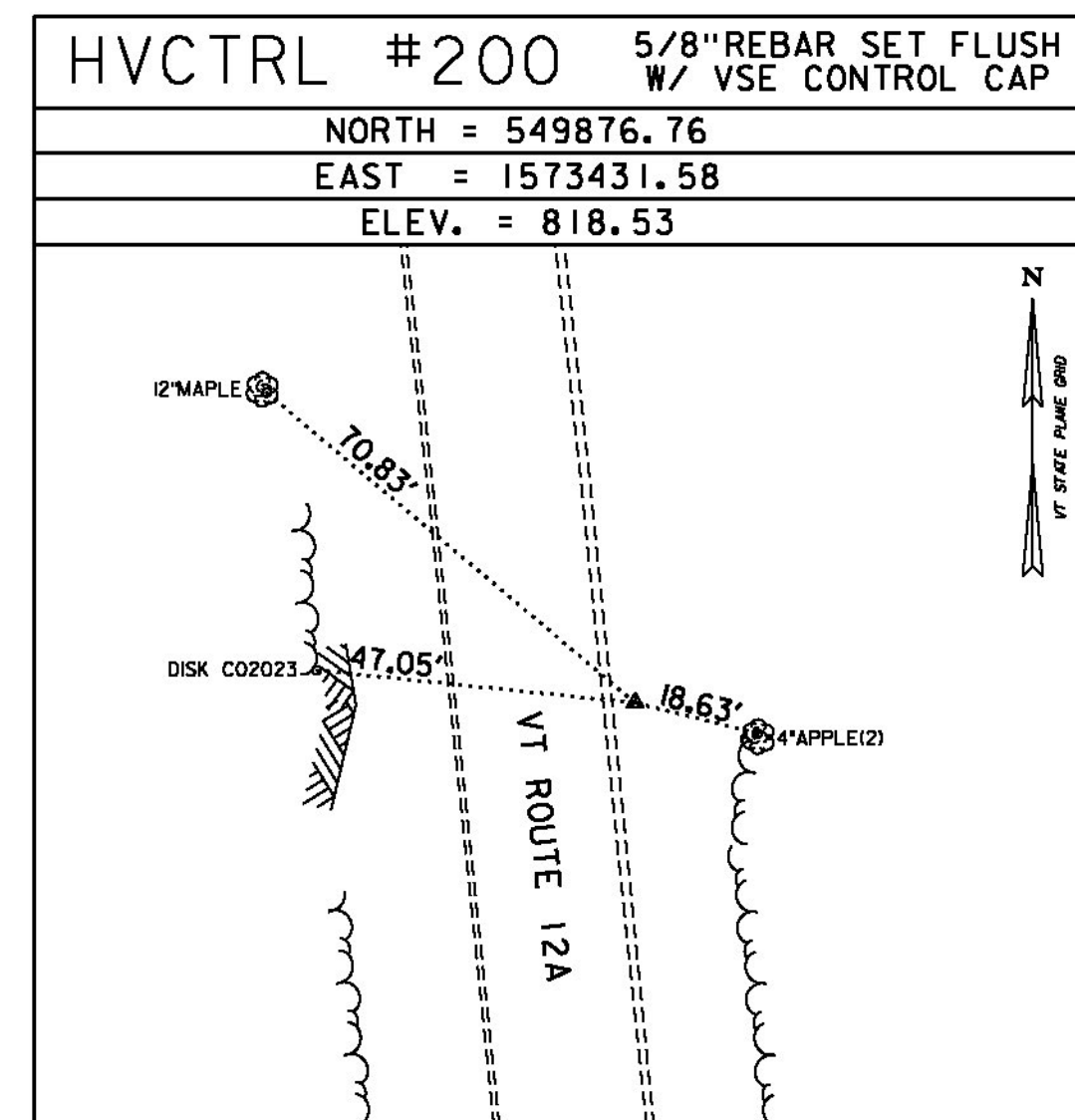
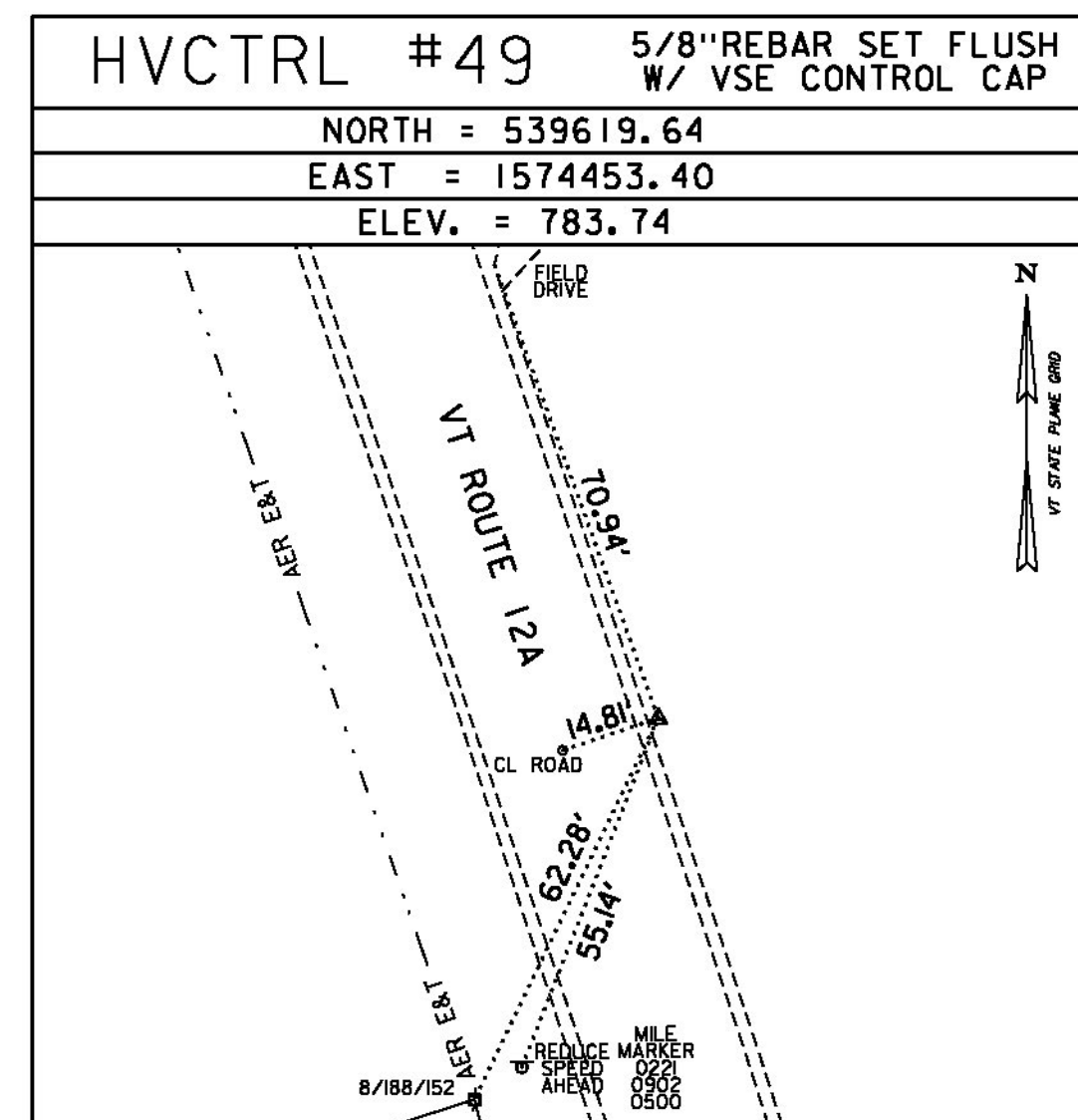
RECOVERY NOTE BY VERMONT GEODETIC SURVEY 2002 (CHR). GENERAL LOCATION, BRAINTREE, VT, IN WEST BRAINTREE. TO REACH FROM THE INTERSECTION OF VT ROUTE 12 AND VT ROUTE 12A IN RANDOLPH GO NORTH ALONG VT ROUTE 12A FOR 6.8 MI (10.9 KM) TO THE INTERSECTION OF THRESHER ROAD RIGHT. CONTINUE STRAIGHT AHEAD AND GO NORTH ALONG VT ROUTE 12A FOR 0.1 MI (0.2 KM) TO THE SITE OF THE MARK ON THE LEFT. TO REACH FROM THE INTERSECTION OF VT ROUTE 12 AND VT ROUTE 12A, SOUTH OF NORTHFIELD VILLAGE, GO SOUTH ALONG VT ROUTE 12A FOR 6.0 MI (9.7 KM) TO THE INTERSECTION OF WARREN MOUNTAIN ROAD RIGHT, IN ROXBURY VILLAGE. CONTINUE STRAIGHT AHEAD AND GO SOUTH ALONG VT ROUTE 12A FOR 7.8 MI (12.6 KM) TO THE SITE OF THE MARK ON THE RIGHT. THE MARK IS SET FLUSH WITH THE GROUND SURFACE IN THE TOP OF A 30 CM (12 INCHES) DIAMETER CONCRETE MONUMENT. IT IS 6.0 M (19.7 FT) WEST OF AND ABOUT 0.1 M (0.3 FT) LOWER THAN THE CENTERLINE OF VT ROUTE 12A, 13.6 M (44.6 FT) NORTH NORTHEAST OF POLE NO 206/169, 67.2 M (220.5 FT) SOUTH OF POLE NO 207/6P170, 29.5 M (96.8 FT) SOUTH SOUTHEAST OF THE CENTER OF THE WEST (INLET) END OF A 30 CM (12 INCHES) DIAMETER METAL CULVERT, AND 0.3 M (1.0 FT) EAST OF A FIBERGLASS WITNESS POST.

VTGS DISK WEST BRAINTREE AZ MK

PID DM1752
 N = 545959.40
 E = 1574010.21
 ELEV = 810.84

DESCRIBED BY VERMONT GEODETIC SURVEY 2002. GENERAL LOCATION, BRAINTREE VT. TO REACH FROM THE INTERSECTION OF VT ROUTE 12 AND VT ROUTE 12A IN RANDOLPH, GO NORTH ALONG VT ROUTE 12A FOR 5.8 MI (9.3 KM) TO THE INTERSECTION OF LEMERY ROAD RIGHT. TURN RIGHT AND GO EAST ALONG LEMERY ROAD FOR ABOUT 10 M (32.8 FT) TO THE LEMERY ROAD GRADE CROSSING OF THE NEW ENGLAND CENTRAL RAILROAD AND THE SITE OF THE MARK ON THE LEFT, JUST WEST OF THE RAILWAY. THE MARK IS SET FLUSH WITH THE GROUND SURFACE IN THE TOP OF A 30 CM (12 INCH) DIAMETER CONCRETE MONUMENT POURED 1.3 M (4.3 FT) DEEP. IT IS 17.0 M (55.8 FT) EAST OF AND ABOUT 2.0 M (6.6 FT) LOWER THAN THE CENTERLINE OF VT ROUTE 12A, 3.2 M (10.5 FT) WEST OF THE WEST RAIL OF THE RAILROAD, 3.3 M (10.8 FT) NORTH OF THE CENTERLINE OF LEMERY ROAD AND 23.3 M (76.4 FT) WEST-SOUTHWEST OF POLE NO 8/218/184.

TRAVERSE TIES



DATUM	
VERTICAL	NAVD 88 FT
HORIZONTAL	NAD 83(2011)SFT
ADJUSTMENT	LSQ



PROJECT NAME:	RANDOLPH-ROXBURY
PROJECT NUMBER:	ER STP 0187(II)
FILE NAME:	z13ci82+1e.dgn
PROJECT LEADER:	M. FOISY
DESIGNED BY:	L. MAYNARD
TIE SHEET 2	
PLOT DATE:	11/17/2014
DRAWN BY:	A. BACKMAN
CHECKED BY:	A. MCQUEENEY
SHEET	30 OF 545