

GPS/NGS CONTROL POINTS

VTGS DISK C02035

PID DMI737
 N = 520394.56
 E = 1596738.25
 ELEV = 681.76

DESCRIBED BY VERMONT GEODETIC SURVEY 2002. GENERAL LOCATION, RANDOLPH, VT. THE MARK IS SET IN THE CONCRETE FOUNDATION OF THE RANDOLPH FIRE STATION AT THE INTERSECTION OF VT ROUTE 12 AND VT ROUTE 12A IN RANDOLPH. IT IS IN THE SOUTHWEST CORNER OF THE BUILDING, ON THE WEST SIDE OF THE MOST WESTERLY GARAGE BAY. IT IS 1.2 M (3.9 FT) EAST OF THE SOUTHWEST CORNER OF THE BUILDING, 0.4 M (1.3 FT) EAST OF THE EAST FACE OF A BRICK WALL EXTENSION, 0.8 M (2.6 FT) SOUTH OF THE SOUTH (FRONT) SIDE OF AN OVERHEAD DOOR, AND 0.2 M (0.7 FT) NORTH OF THE SOUTH EDGE OF THE CONCRETE FOUNDATION.

VTGS DISK C02033

PID DMI735
 N = 520531.55
 E = 1594354.81
 ELEV = 688.99

DESCRIBED BY VERMONT GEODETIC SURVEY 2002. GENERAL LOCATION, RANDOLPH, VT. OWNERSHIP, HELEN RATTEE, 39 PARK STREET, 82 VT ROUTE 12A, RANDOLPH, VT 05060. TO REACH FROM THE INTERSECTION OF VT ROUTE 12 AND VT ROUTE 12A IN RANDOLPH, GO NORTH ALONG VT ROUTE 12A FOR 0.5 MI (0.8 KM) TO MRS. RATTEE'S HOUSE ON THE RIGHT AND THE SITE OF THE MARK ON THE RIGHT IN A LAWN SOUTHEAST OF THE HOUSE. THE MARK IS SET IN THE TOP OF A 0.7 M (2.3 FT) X 1.3 M (4.3 FT) ROCK OUTCROP WHICH PROJECTS 0.1 M (0.3 FT) ABOVE GROUND SURFACE. IT IS 25.4 M (83.3 FT) NORTHEAST OF AND ABOUT 5.0 M (16.4 FT) HIGHER THAN THE CENTERLINE OF VT ROUTE 12A, 7.2 M (23.6 FT) SOUTHEAST OF THE EAST CORNER OF THE HOUSE, 12.3 M (40.4 FT) EAST OF THE SOUTH CORNER OF THE HOUSE, AND 19.6 M (64.3 FT) EAST NORTHEAST OF POLE NO 807/10 AND A FIBERGLASS WITNESS POST.

VTGS DISK C02031

PID DMI733
 N = 522302.90
 E = 1587829.82
 ELEV = 718.96

DESCRIBED BY VERMONT GEODETIC SURVEY 2002. GENERAL LOCATION, BRAINTREE VT. TO REACH FROM THE INTERSECTION OF VT ROUTE 12 AND VT ROUTE 12A IN RANDOLPH, GO NORTH ALONG VT ROUTE 12A FOR 1.9 MI (3.1 KM) TO THE SITE OF THE MARK ON THE RIGHT. IT IS 0.1 MI (0.2 KM) SOUTHEAST OF THE INTERSECTION OF VT ROUTE 12A AND MOBILE ACRES ROAD. THE MARK IS SET IN THE TOP OF A 4.6 M (15.1 FT) X 2.5 M (8.2 FT) ROCK OUTCROP WHICH PROJECTS ABOUT 0.5 M (1.6 FT) ABOVE GROUND SURFACE. IT IS 11.3 M (37.1 FT) NORTHEAST OF AND ABOUT LEVEL WITH THE CENTERLINE OF VT ROUTE 12A, 13.2 M (43.3 FT) NORTH NORTHWEST OF POLE NO 77/59, 48.8 M (160.1 FT) SOUTHEAST OF POLE NO 8/78/59 1/2, AND 0.5 M (1.6 FT) NORTH OF A FIBERGLASS WITNESS POST.

VTGS DISK C02029

PID DMI731
 N = 528223.90
 E = 1584417.65
 ELEV = 753.81

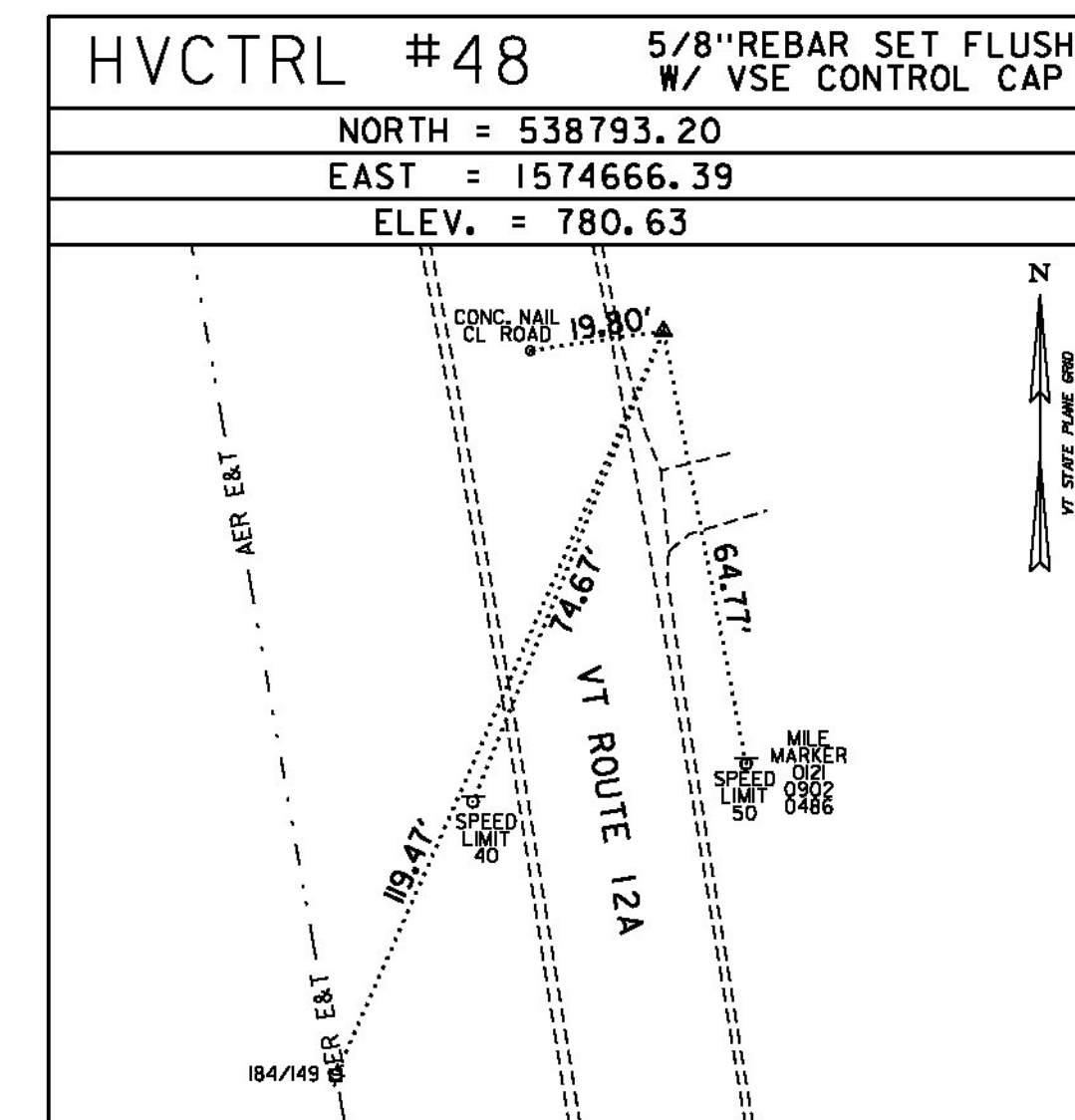
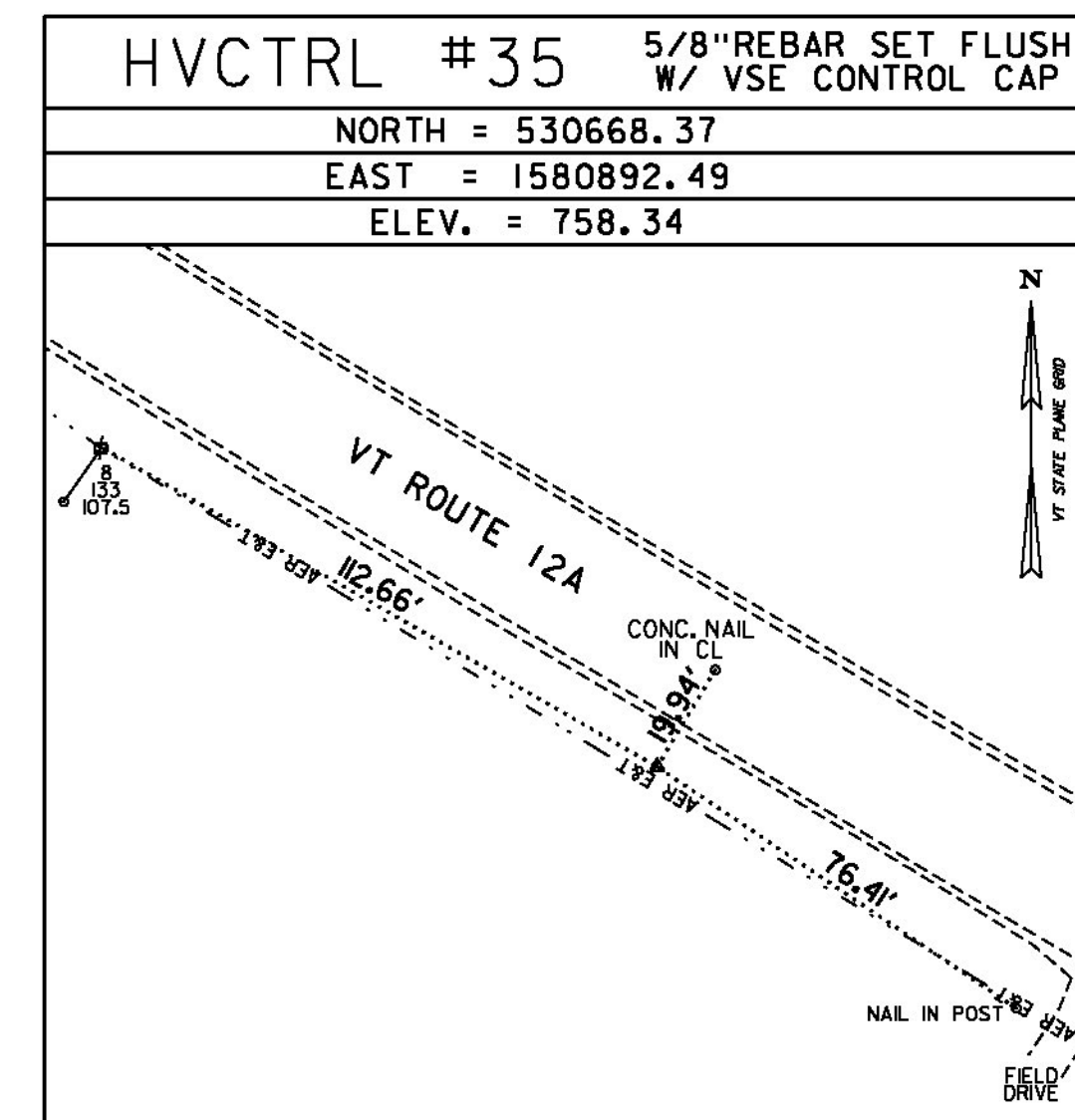
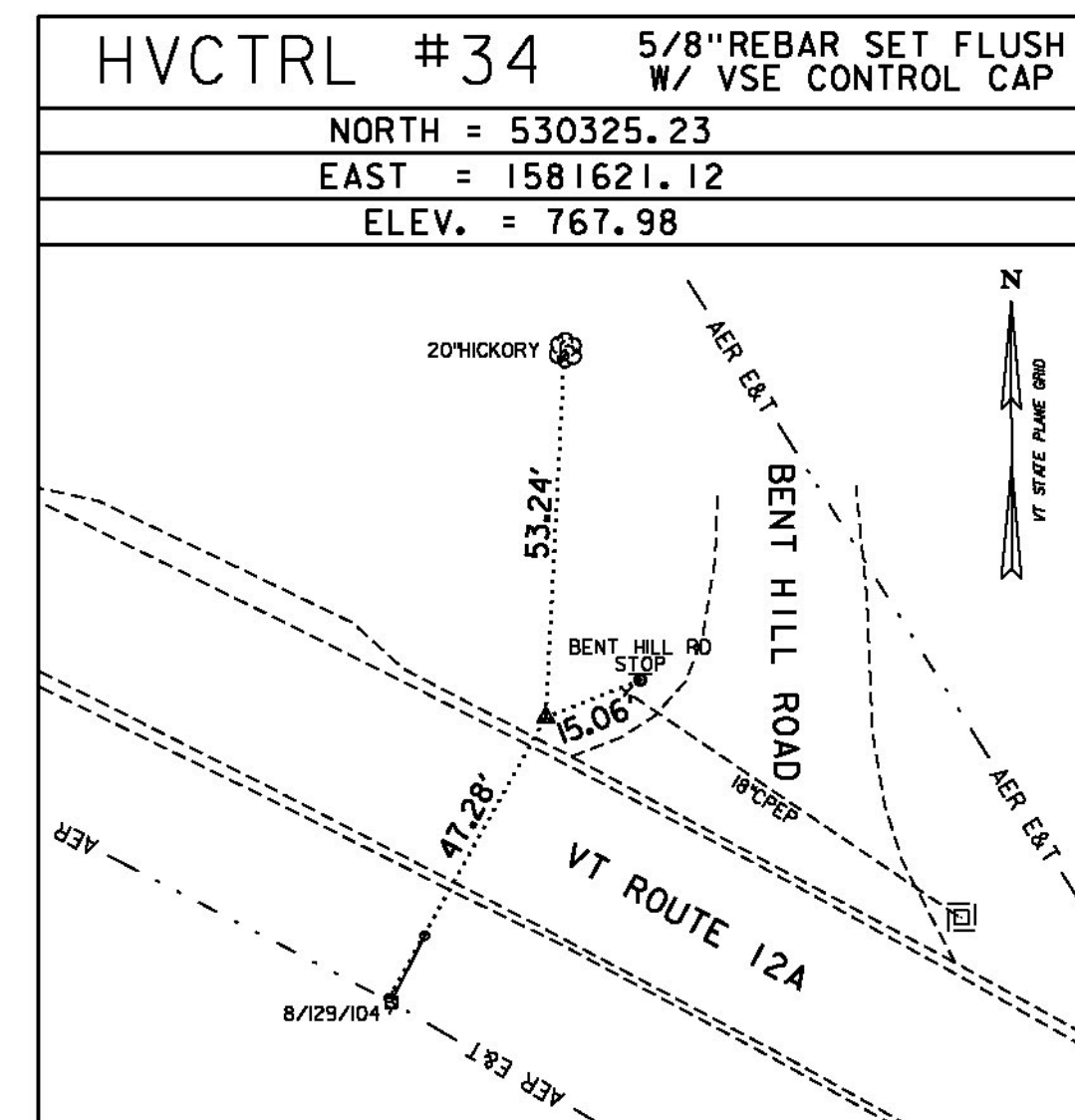
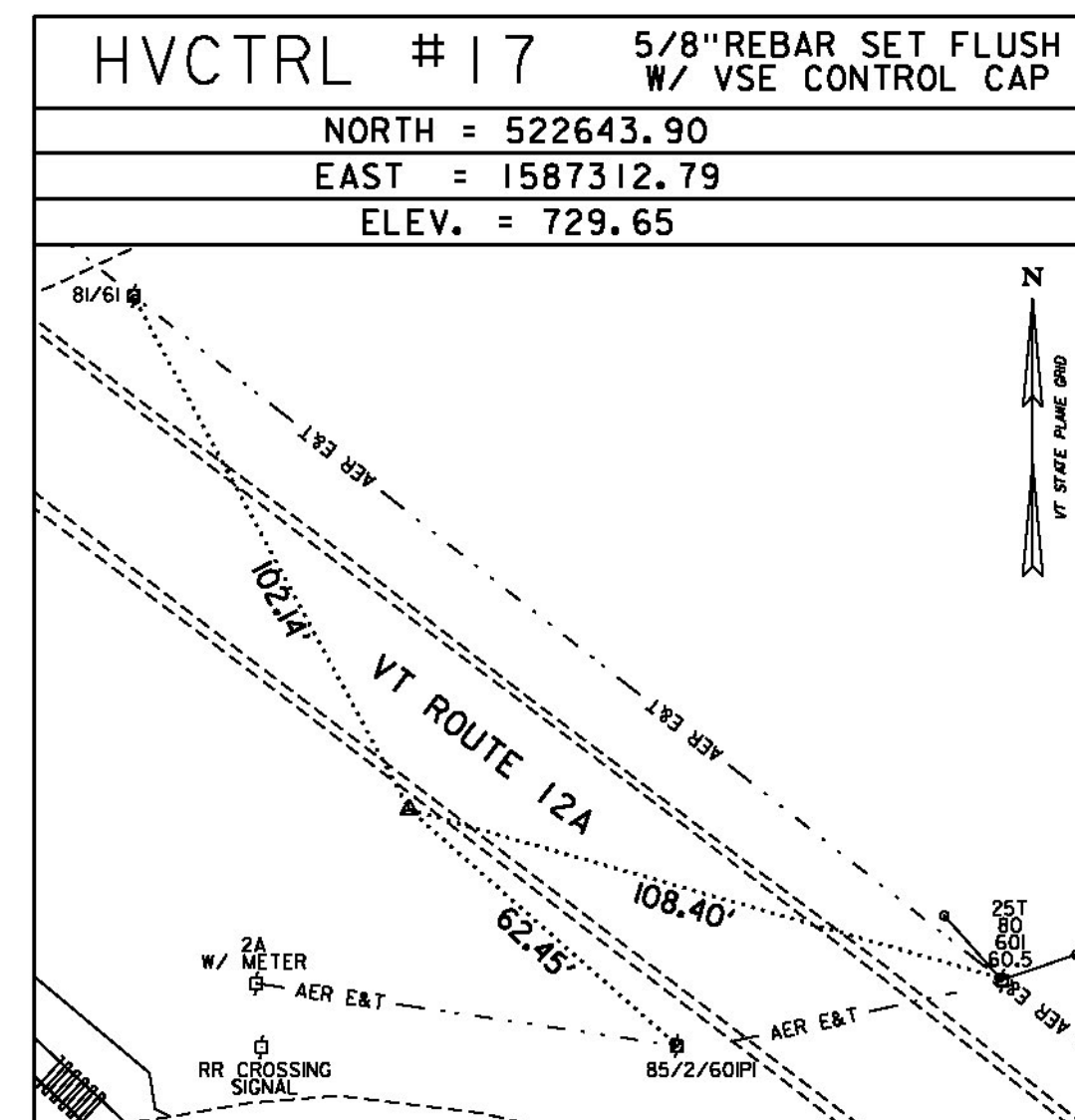
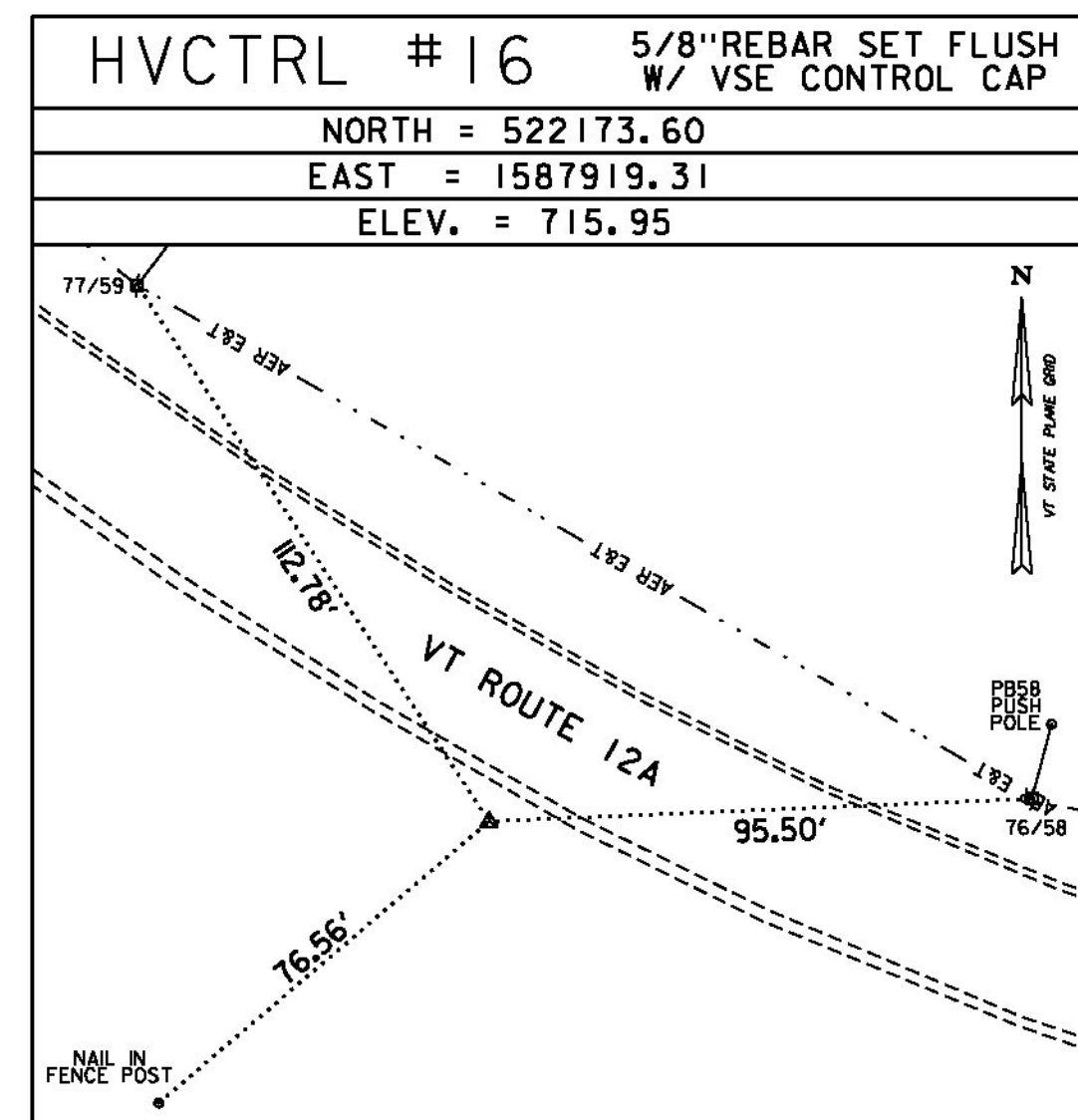
DESCRIBED BY VERMONT GEODETIC SURVEY 2002. GENERAL LOCATION, BRAINTREE VT. OWNERSHIP, RON WARNER, 2814 VT ROUTE 12A, BRAINTREE, VT 05060. TO REACH FROM THE INTERSECTION OF VT ROUTE 12 AND VT ROUTE 12A IN RANDOLPH, GO NORTH ALONG VT ROUTE 12A FOR 3.3 MI (5.3 KM) TO THE SITE OF THE MARK ON THE RIGHT, JUST NORTHWEST OF MR. WARNER'S HOUSE AND BARN, AND OPPOSITE A CEMETERY. THE MARK IS SET IN THE TOP OF A MASSIVE ROCK OUTCROP. IT IS 9.6 M (31.5 FT) NORTHEAST OF AND ABOUT 1.5 M (4.9 FT) HIGHER THAN THE CENTERLINE OF VT ROUTE 12A, 20.7 M (67.9 FT) WEST NORTHWEST OF THE NORTHWEST CORNER OF THE BARN, 6.0 M (19.7 FT) WEST OF A 30 CM (12 INCHES) TRIPLE TRUNK APPLE, AND 9.0 M (29.5 FT) EAST SOUTHEAST OF POLE NO 8/111/6P90 AND A FIBERGLASS WITNESS POST.

VTGS DISK C02028

PID DMI730
 N = 530439.38
 E = 1581597.71
 ELEV = 770.71

DESCRIBED BY VERMONT GEODETIC SURVEY 2002. GENERAL LOCATION, BRAINTREE VT. OWNERSHIP, SALLY ABEL, 87 BENT HILL ROAD, BRAINTREE, VT 05060. TO REACH FROM THE INTERSECTION OF VT ROUTE 12 AND VT ROUTE 12A IN RANDOLPH, GO NORTH ALONG VT ROUTE 12A FOR 4.1 MI (6.6 KM) TO THE INTERSECTION OF BENT HILL ROAD RIGHT. TURN RIGHT AND GO NORTHEAST ALONG BENT HILL ROAD FOR ABOUT 35 M (114.8 FT) TO THE SITE OF THE MARK ON THE LEFT IN A LAWN. THE MARK IS SET FLUSH WITH THE GROUND SURFACE IN THE TOP OF A 0.6 M (2.0 FT) X 0.3 M (1.0 FT) ROCK OUTCROP. IT IS 32.9 M (107.9 FT) EAST-NORTHEAST OF AND ABOUT 2.0 M (6.6 FT) HIGHER THAN THE CENTERLINE OF VT ROUTE 12A, 11.8 M (38.7 FT) WEST OF AND ABOUT 2.0 M (6.6 FT) LOWER THAN THE CENTERLINE OF BENT HILL ROAD, 19.1 M (62.7 FT) SOUTHWEST OF THE SOUTHWEST CORNER A SMALL GARAGE, 9.2 M (30.2 FT) NORTHWEST OF POLE NO XX1/16API AND A FIBERGLASS WITNESS POST.

TRAVERSE TIES



* MAIN TRAVERSE COMPLETED: FEBRUARY 1, 2013 BY VSE, M. YEFCHAK-PC, T. YEFCHAK

DATUM	
VERTICAL	NAVD 88 FT
HORIZONTAL	NAD 83(2011)SFT
ADJUSTMENT	LSQ



PROJECT NAME:	RANDOLPH-ROXBURY
PROJECT NUMBER:	ER STP 0187(II)
FILE NAME:	z13ci82+1e.dgn
PROJECT LEADER:	M. FOISY
DESIGNED BY:	L. MAYNARD
TIE SHEET 1	
PLOT DATE:	11/17/2014
DRAWN BY:	A. BACKMAN
CHECKED BY:	A. MCQUEENEY
SHEET	29 OF 545