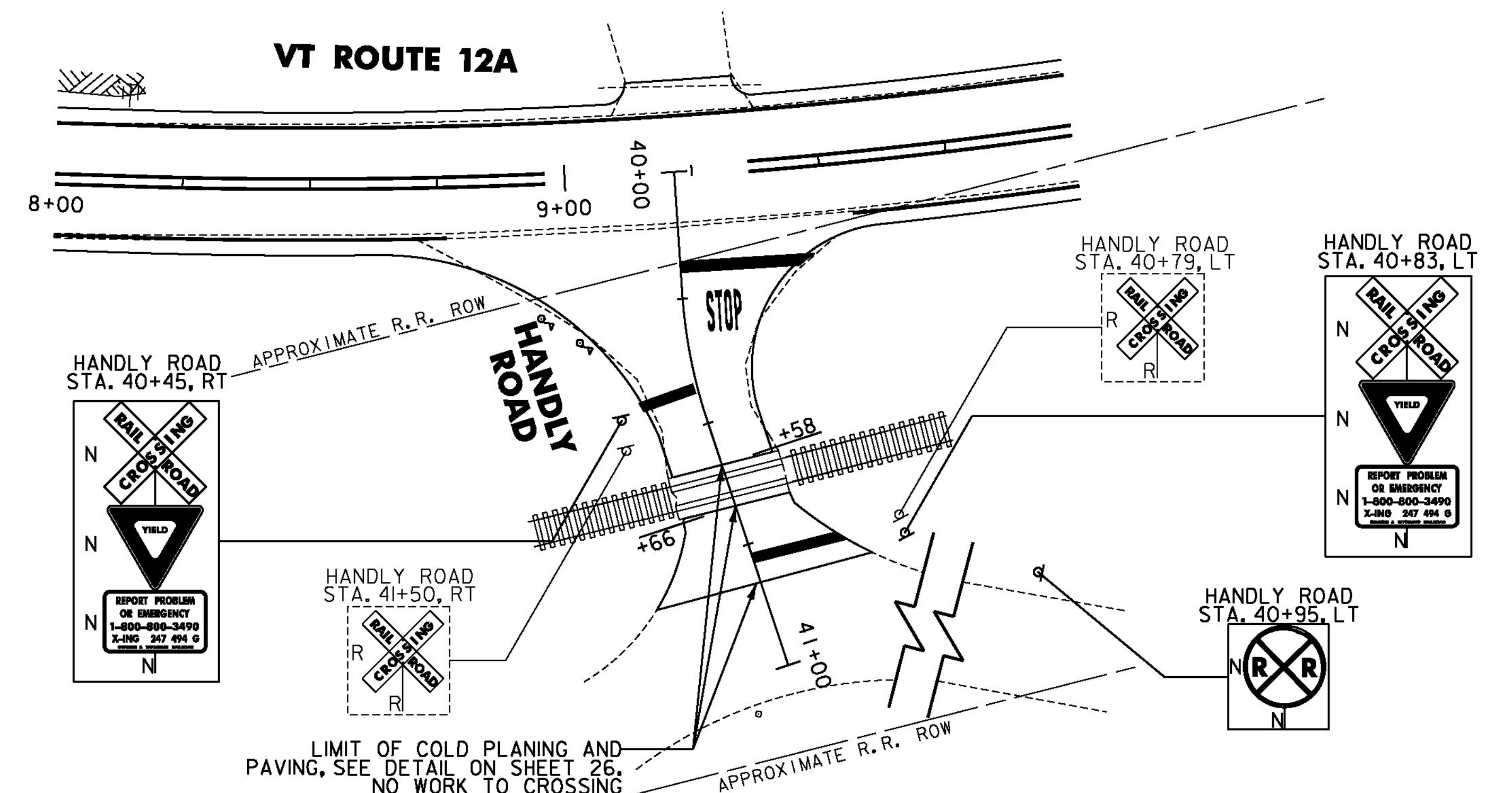
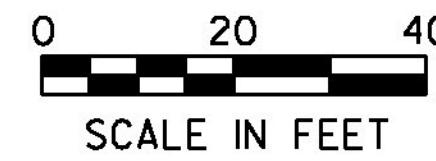


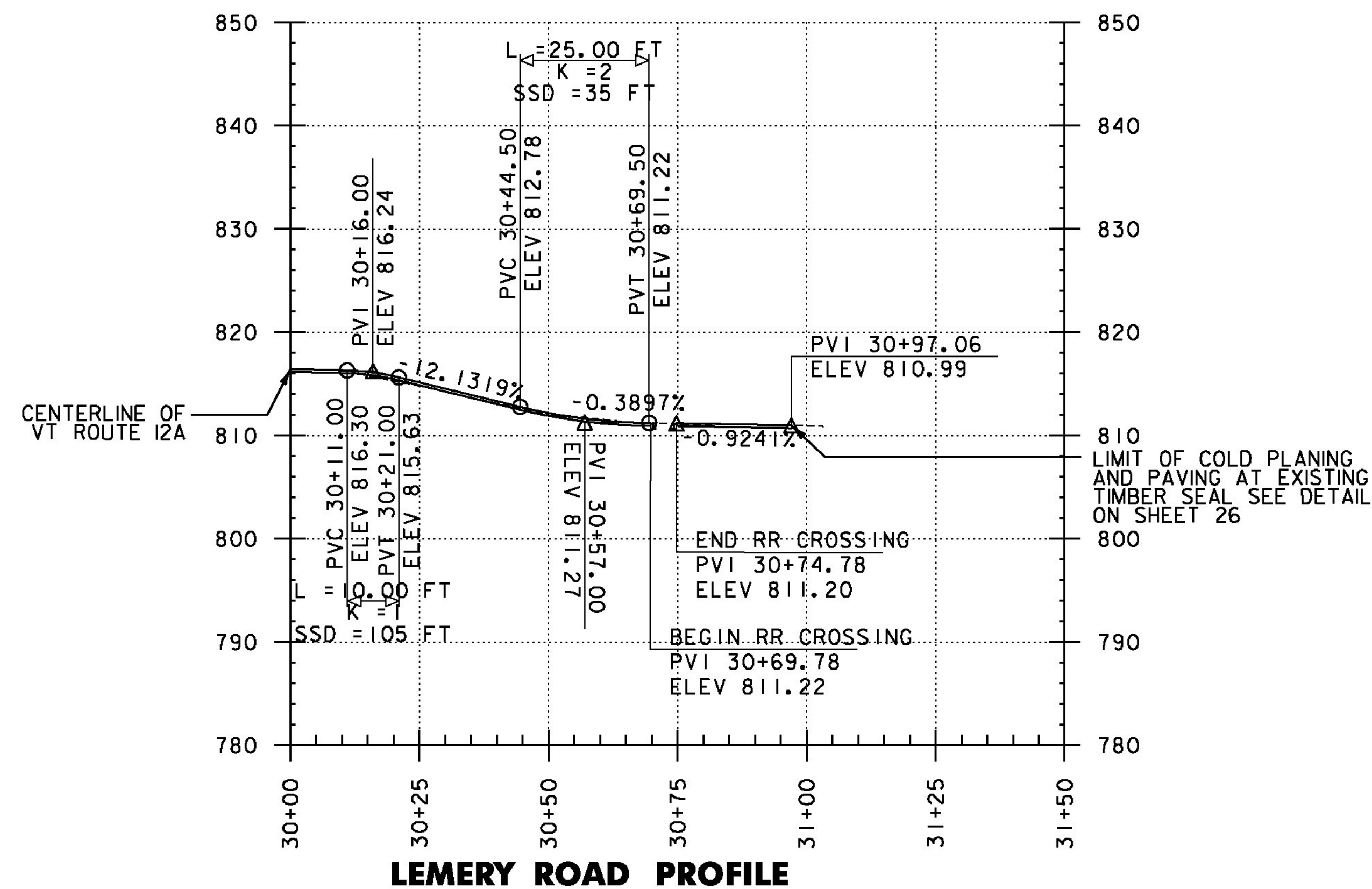
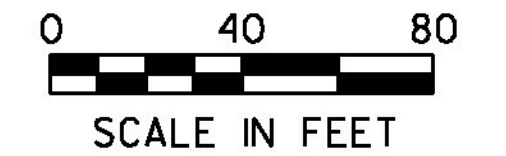
LEMERY ROAD RAILROAD CROSSING #247-493A DETAIL
BRAINTREE STA. 329+84, RT

DURABLE 24 INCH STOP BAR, THERMOPLASTIC
 DURABLE 24 INCH STOP BAR, POLYUREA
 TEMPORARY 24 INCH STOP BAR, PAINT
 LEMERY ROAD STA. 30+53, LT (8 LF)
 LEMERY ROAD STA. 30+92, LT (11.5 LF)
 REMOVING SIGNS
 AS SHOWN - 3

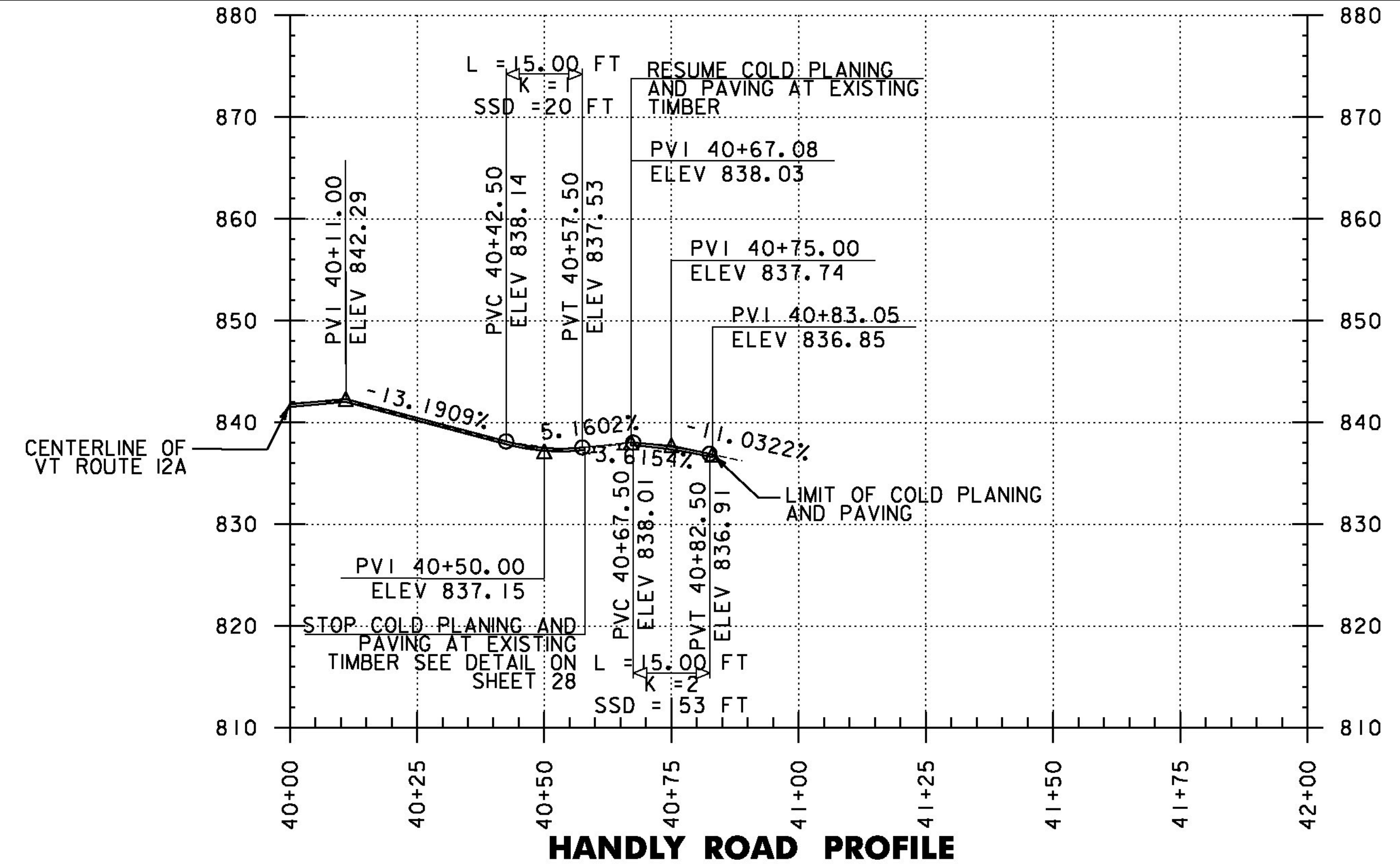
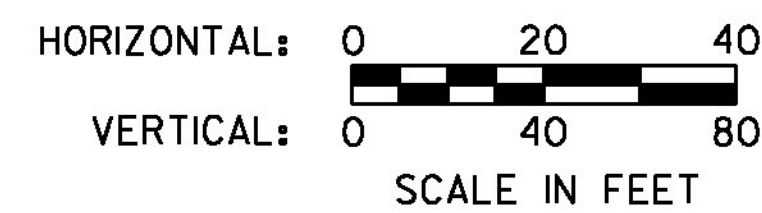


HANDLY ROAD RAILROAD CROSSING #247-494G DETAIL
GRANVILLE STA. 9+13, RT

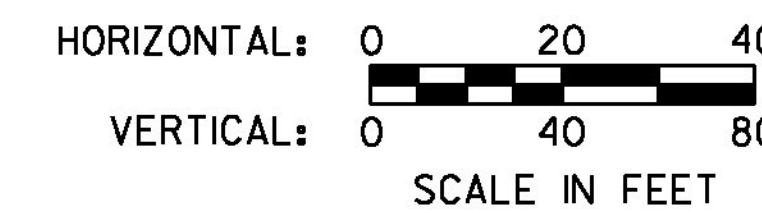
DURABLE 24 INCH STOP BAR, THERMOPLASTIC
 DURABLE 24 INCH STOP BAR, POLYUREA
 TEMPORARY 24 INCH STOP BAR, PAINT
 HANDLY ROAD STA. 40+45, RT (11 LF)
 HANDLY ROAD STA. 40+78, LT (18.5 LF)
 REMOVING SIGNS
 AS SHOWN - 2



LEMERY ROAD PROFILE



HANDLY ROAD PROFILE



PROJECT NAME: RANDOLPH-ROXBURY	
PROJECT NUMBER: ER STP 0187(II)	
FILE NAME: z13c182frm.dgn	PLOT DATE: 11/17/2014
PROJECT LEADER: M. FOISY	DRAWN BY: I. MAYNARD
DESIGNED BY: I. MAYNARD	CHECKED BY: M. FOISY
RAILROAD CROSSING DETAIL SHEET 3 SHEET 25 OF 545	

