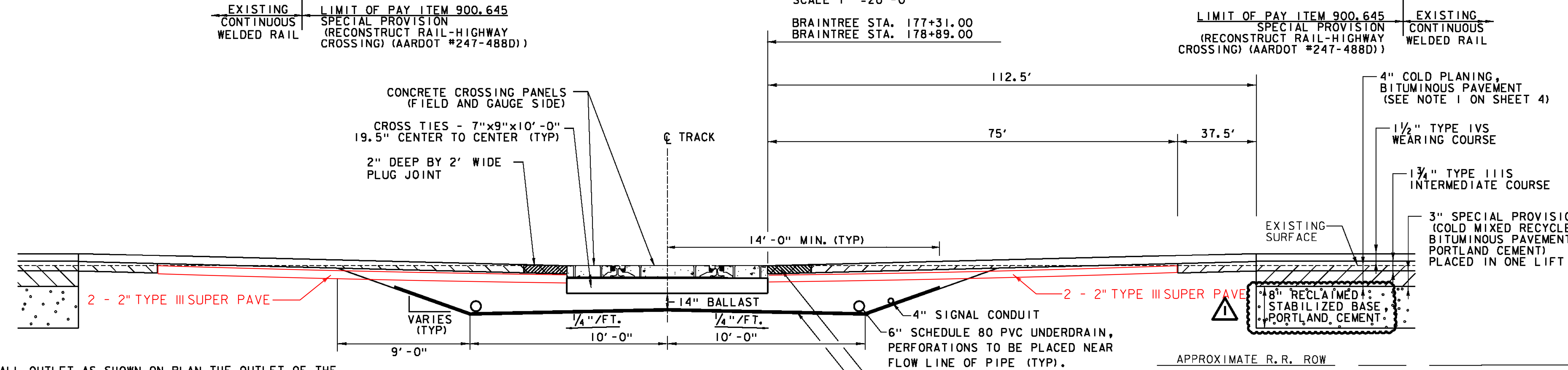


**TYPICAL PLAN VIEW**  
SCALE 1" = 20'-0"

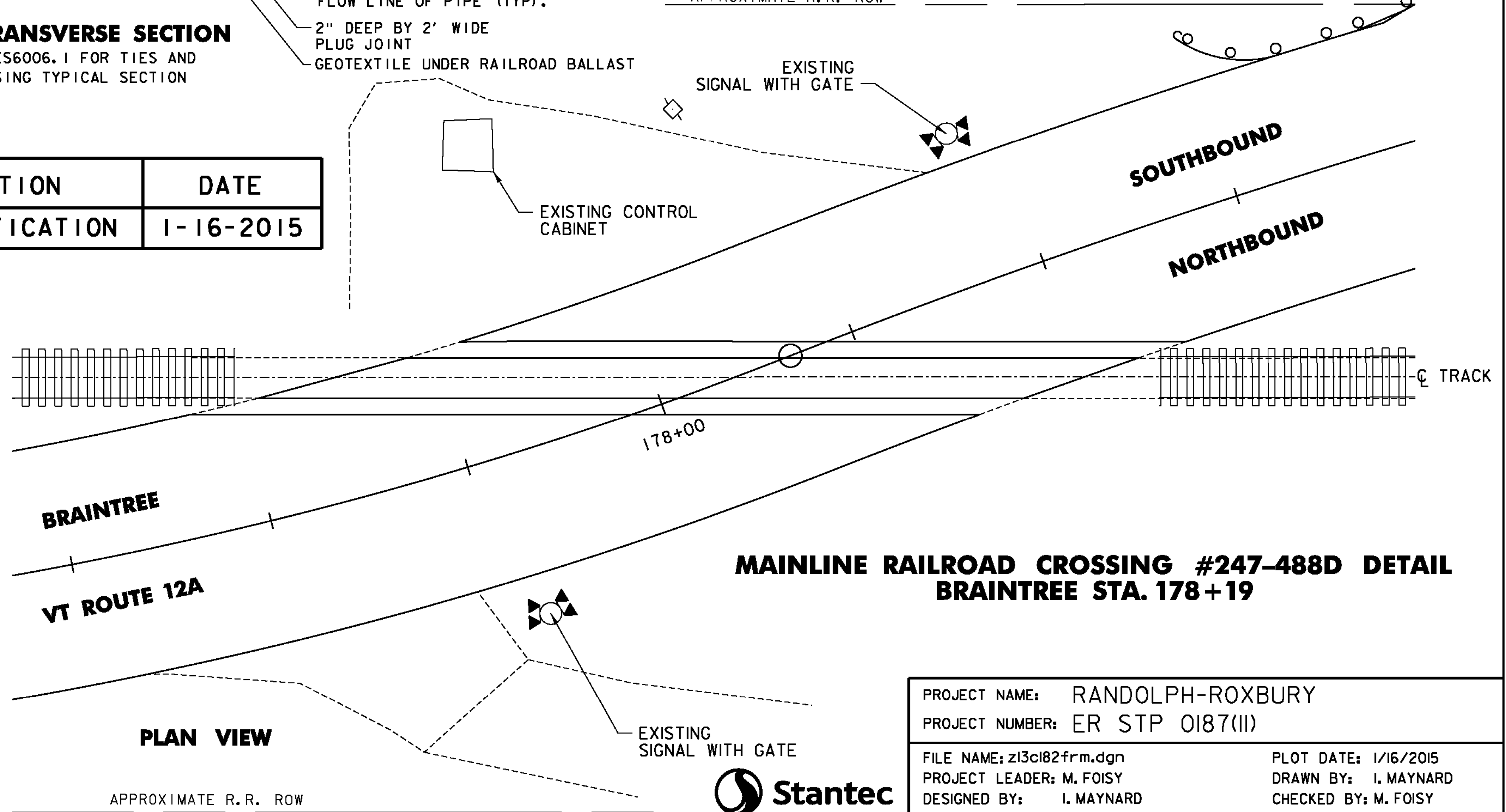


**TYPICAL TRANSVERSE SECTION**  
REFER TO ES6006.1 FOR TIES AND ROAD CROSSING TYPICAL SECTION

REV	DESCRIPTION	DATE
1	NOTE CLARIFICATION	1-16-2015

**GENERAL NOTES**

1. NEW UNDERDRAIN PIPE SHALL OUTLET AS SHOWN ON PLAN. THE OUTLET OF THE UNDERDRAIN SHALL BE ADJUSTED IN THE FIELD AS DIRECTED BY THE ENGINEER. PERFORATIONS TO BE PLACED NEAR FLOW LINE OF PIPE. GEOTEXTILE SHALL BE GEOTEXTILE UNDER RAILROAD BALLAST. UNDERDRAIN PIPE SHALL BE SCHEDULE 80 PVC PERFORATED PIPE.
2. ALL RAIL JOINTS WITHIN THE PROJECT LIMITS WILL BE CROPPED AND WELDED IN ACCORDANCE WITH THE LATEST REVISION OF A.R.E.M.A. SPECIFICATIONS AT AN OFF-SITE ELECTRIC WELDING PLANT. WELDING CAN BE DONE IN FIELD UTILIZING THERMITE WELDING WITH ADVANCE APPROVAL FROM THE AGENCY. WELDED JOINTS SHALL BE GROUND TO CONFORM TO THE SHAPE OF THE RAIL ON GAUGE AND FIELD SIDES.
3. TIES SHALL BE PLACED IN ACCORDANCE TO ES6007.1. TIES IN CROSSING AREAS SHALL BE REPLACED AS RECOMMENDED BY THE RAILROAD AND APPROVED BY THE ENGINEER (INCLUDED IN THE UNIT PRICE BID FOR ITEM 900.645 SPECIAL PROVISION (RECONSTRUCT RAIL HIGHWAY CROSSING)). TIES REQUIRED OUTSIDE OF CROSSING AREA SHALL BE PAID AS ITEM 900.620 SPECIAL PROVISION (REMOVAL AND REPLACEMENT OF CROSS TIES).
4. BALLAST OUTSIDE THE FULL DEPTH RAILROAD CONSTRUCTION AREA SHALL EXTEND 12" BEYOND END OF TIES AND BE SLOPED 1:2 TO THE ROADBED.
5. TYPE AND DESIGN OF COMMERCIAL FLANGWAY MATERIALS SHALL RECEIVE APPROVAL FROM THE ENGINEER.
6. MANUFACTURER'S SPECIFICATIONS SHALL BE FOLLOWED FOR THE INSTALLATION OF COMMERCIAL FLANGWAY MATERIALS AND INSULATED JOINTS.
7. CONTRACTOR SHALL ADD BALLAST, LINE, TAMP, AND SURFACE TRACK IN APPROACH AREAS TO OBTAIN A SMOOTH TRANSITION BETWEEN EXISTING AND PROPOSED TRACK TO THE SATISFACTION OF THE ENGINEER AND RAILROAD. THIS WORK IS INCLUDED IN THE UNIT PRICE BID FOR ITEM 900.645 (RECONSTRUCT RAIL-HIGHWAY CROSSING).
8. EXCAVATION, UNDERDRAIN, BALLAST, GEOTEXTILE, FLANGWAY MATERIALS AND TIES ARE INCLUDED IN THE UNIT PRICE BID FOR ITEM 900.645 SPECIAL PROVISION (RECONSTRUCT RAIL-HIGHWAY CROSSING).
9. SAW CUTTING SHALL NOT BE PAID SEPARATELY BUT BE INCIDENTAL TO ITEM 210.10.
10. ALL COSTS ASSOCIATED WITH REMOVAL AND REPLACEMENT OF BALLAST AND GEOTEXTILE OUTSIDE THE RAIL-HIGHWAY CROSSING LIMITS SHALL BE PAID UNDER ITEM 900.608 SPECIAL PROVISION (RAILROAD BALLAST).
11. PREFERRED RAIL LAYING TEMPERATURE (PRLT) SHALL BE BETWEEN 105 DEGREES AND 120 DEGREES FAHRENHEIT.
12. 4" SCH 80 PVC CONDUIT FOR ELECTRICAL SERVICE TO THE SIGNAL CABINET. 12" HORIZONTAL SEPARATION FROM OTHER UTILITIES AND 36" MINIMUM COVER.



**PLAN VIEW**

**MAINLINE RAILROAD CROSSING #247-488D DETAIL  
BRAintree STA. 178+19**

PROJECT NAME: RANDOLPH-ROXBURY	PLOT DATE: 1/16/2015
PROJECT NUMBER: ER STP 0187(II)	DRAWN BY: I. MAYNARD
FILE NAME: z13c182frm.dgn	CHECKED BY: M. FOISY
PROJECT LEADER: M. FOISY	DESIGNED BY: I. MAYNARD
<b>RAILROAD CROSSING DETAIL SHEET 1</b>	
SHEET 23 OF 545	

