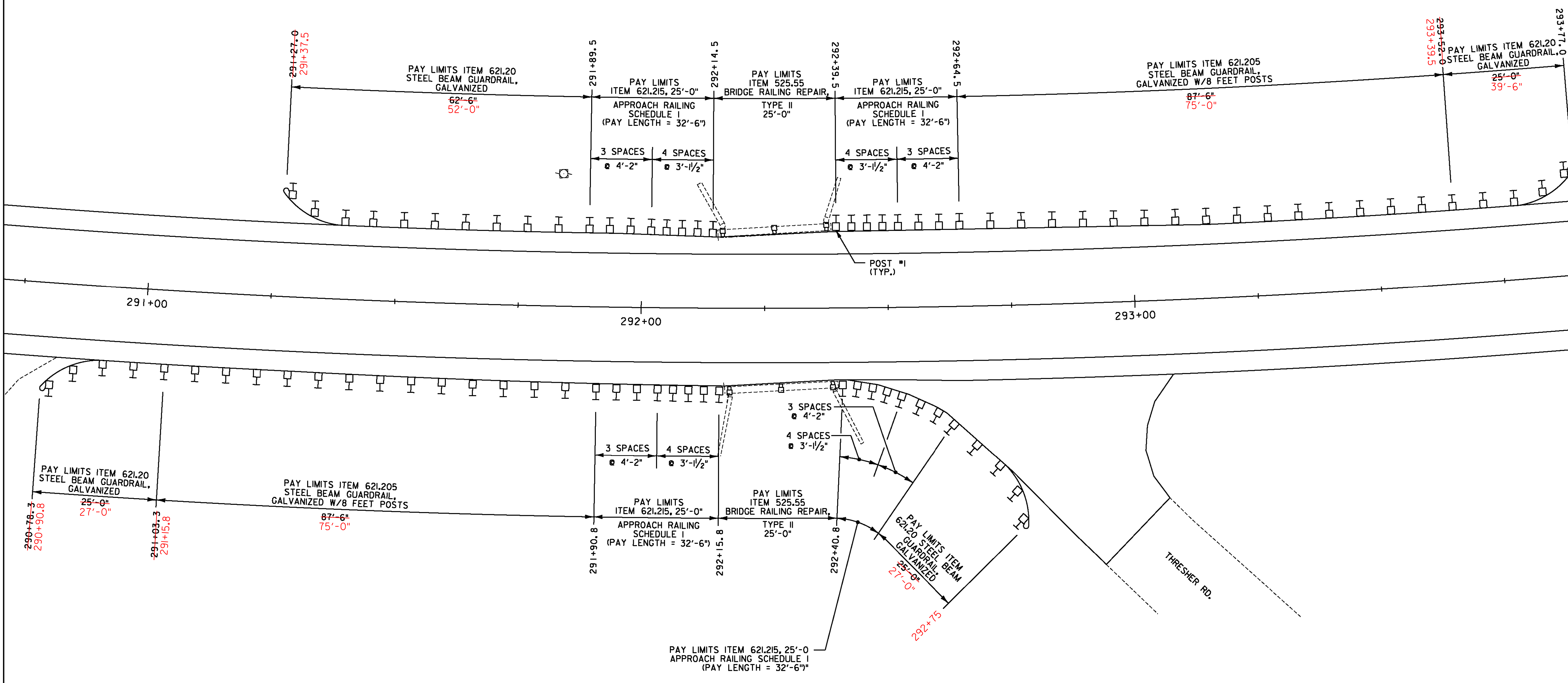


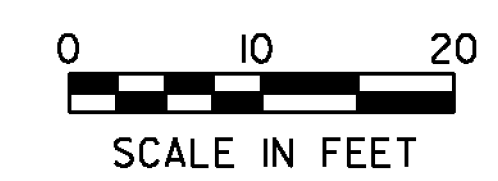
REMOVAL OF EXISTING BRIDGE RAILING  
 STA. 292+14.5 TO 292+39.5, LT  
 STA. 292+15.8 TO 292+40.8, RT

BRIDGE RAILING REPAIR, TYPE II  
 STA. 292+14.5 TO 292+39.5, LT  
 STA. 292+15.8 TO 292+40.8, RT

RAPID SETTING CONCRETE REPAIR MATERIAL WITH COARSE AGGREGATE  
 STA. 292+15.1 TO 292+40.2



BR 10 BRAINTREE MM 5.536 = STA. 292+30



PROJECT NAME: RANDOLPH-ROXBURY	
PROJECT NUMBER: ER STP 0187(II)	
FILE NAME: z13cl82frm.dgn	PLOT DATE: 11/17/2014
PROJECT LEADER: M. FOISY	DRAWN BY: I. MAYNARD
DESIGNED BY: I. MAYNARD	CHECKED BY: M. FOISY
<b>GUARDRAIL DETAIL SHEET 6</b>	SHEET 16 OF 545