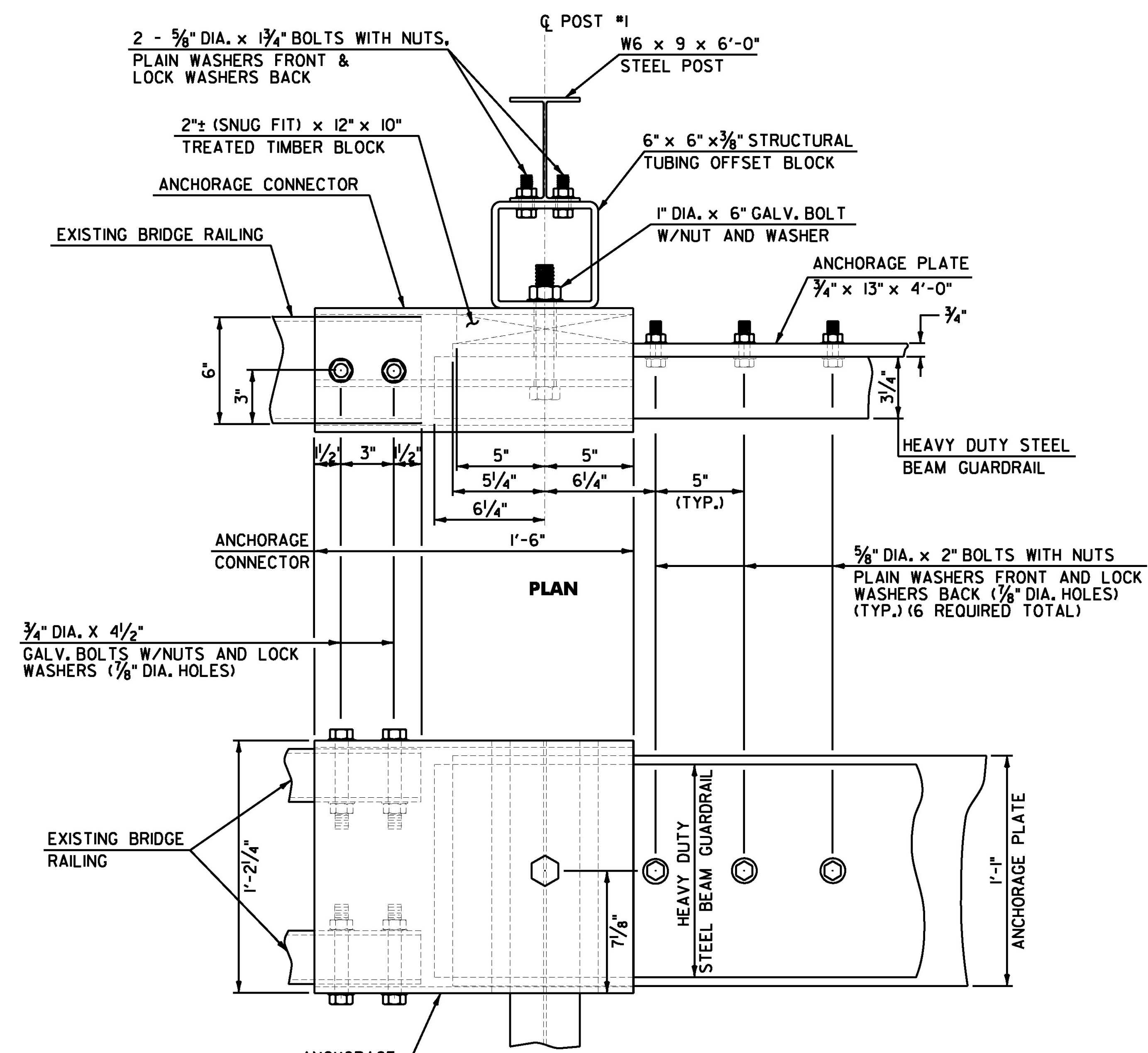
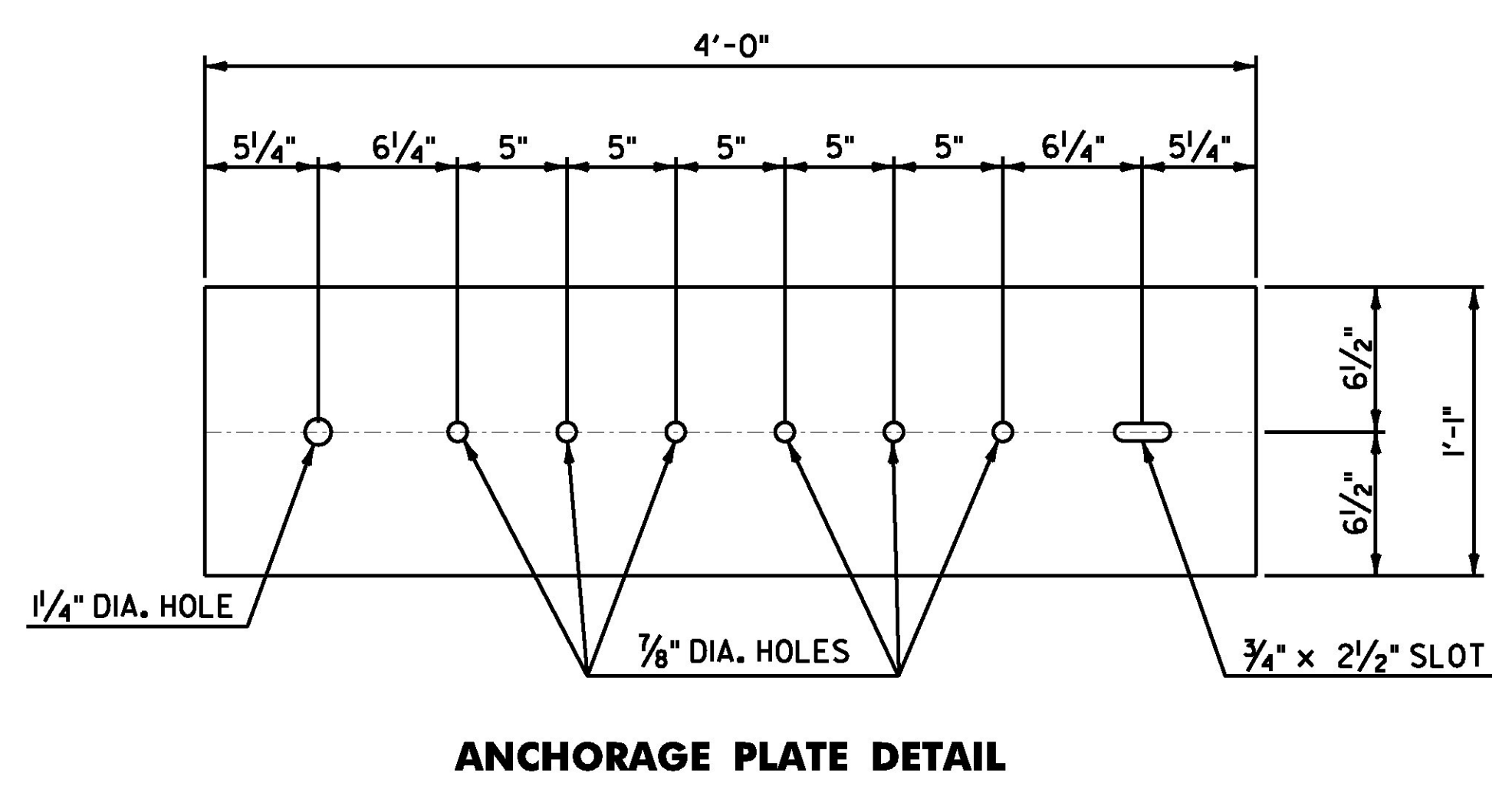


NOTES

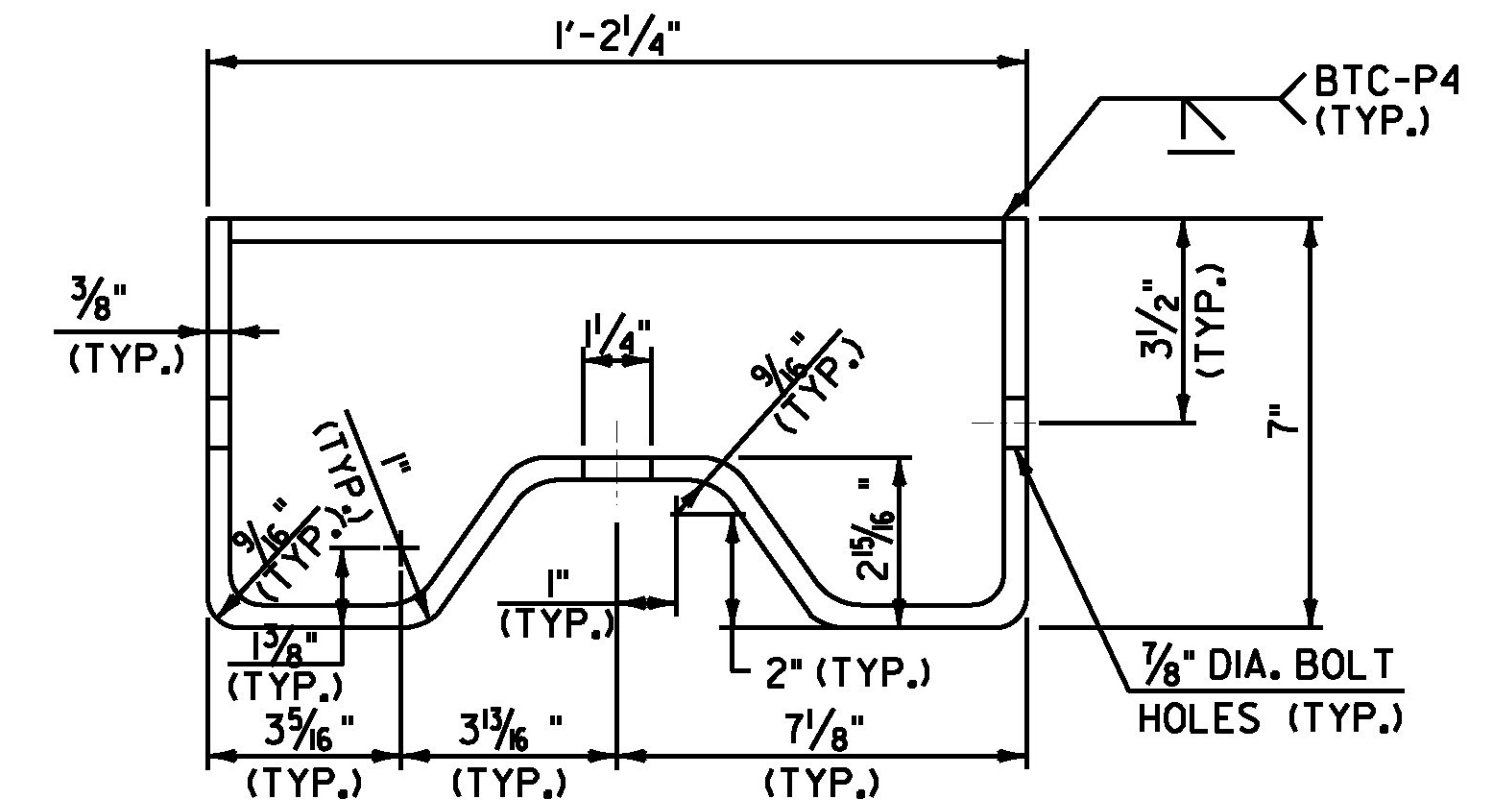
1. REFER TO VAOT STANDARD G-1 FOR ADDITIONAL RAIL DETAILS.
2. ALL POSTS FOR HEAVY DUTY STEEL BEAM GUARDRAIL SHALL BE STEEL IN ACCORDANCE WITH SUBSECTION 728.01(c) UNLESS OTHERWISE SPECIFIED IN THE CONTRACT.
3. APPROACH RAIL SPLICES SHALL LAP IN DIRECTION OF TRAFFIC FLOW.
4. ANCHORAGE CONNECTOR AND ANCHORAGE PLATE SHALL CONFORM TO SUBSECTION 728.01(c).
5. ALL BOLTS, NUTS AND WASHERS SHALL CONFORM TO SUBSECTION 728.03(c).
6. STRUCTURAL TUBING OFFSET BLOCK SHALL CONFORM TO SUBSECTION 728.01(c).
7. APPROACH RAILING SHALL BE HEAVY DUTY STEEL BEAM FOR 50'-0" FROM THE ϕ OF POST #1 FOR TYPE I AND 12'-6" FROM THE ϕ OF POST #1 FOR TYPE II.
8. ALLOWABLE DIMENSIONAL TOLERANCE FOR BENT SECTIONS IS $\pm 1/16"$.
9. THE UNIT PRICES BID FOR EITHER TYPE OF GUARDRAIL APPROACH SECTION SHALL INCLUDE ANCHORAGE CONNECTOR, ANCHORAGE PLATE, HEAVY DUTY STEEL BEAM GUARDRAIL, POSTS, OFFSET BLOCKS, BLOCKING, BOLTS, AND ALL NECESSARY HARDWARE.



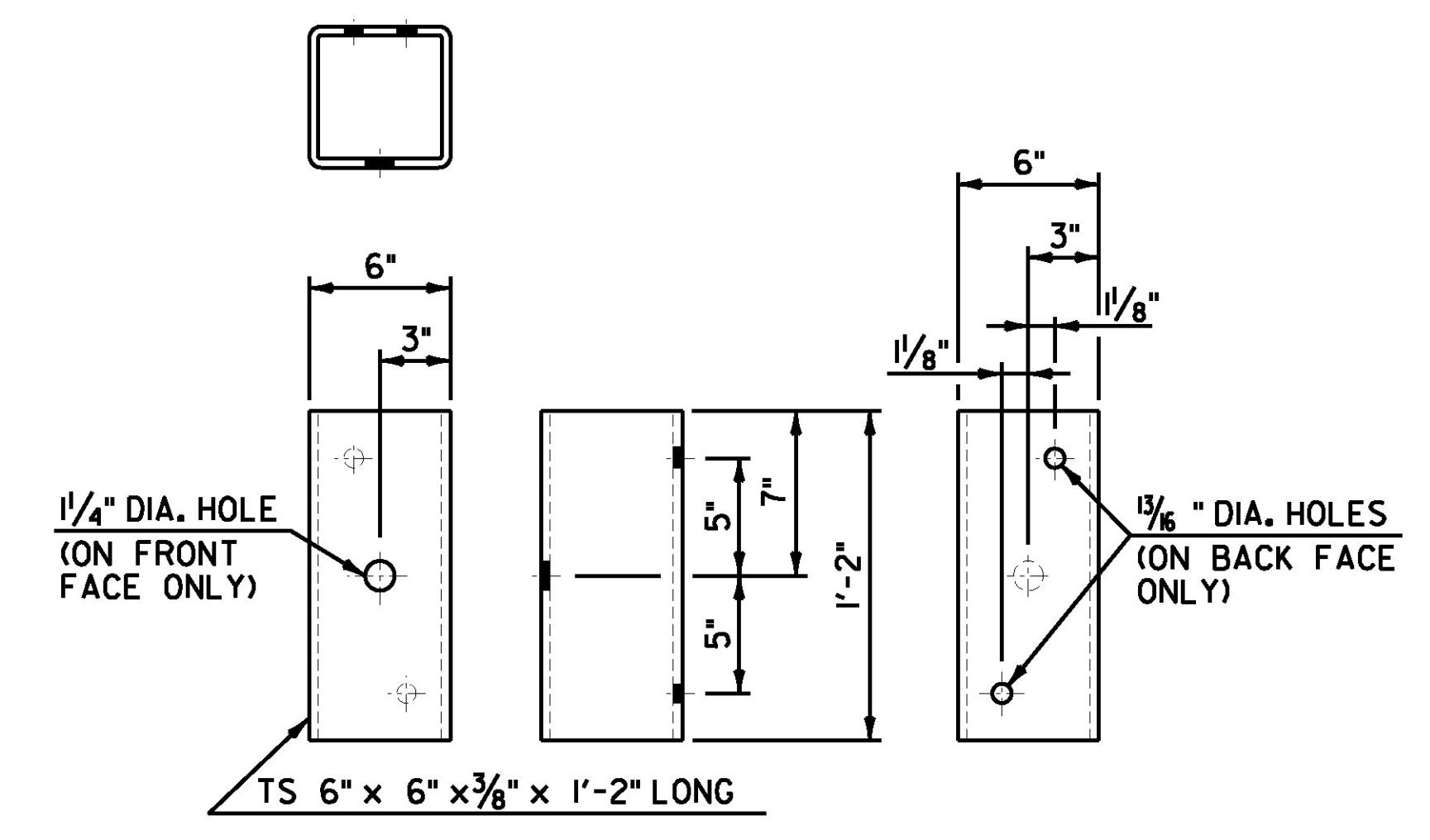
CONNECTION DETAILS AT POST #1



ANCHORAGE PLATE DETAIL



ANCHORAGE CONNECTOR DETAIL
(SEE NOTE 8)



STRUCTURAL TUBING OFFSET BLOCK DETAILS
(OCCURS AT POST #1 WHEN USING APPROACH RAIL UTILIZING STEEL POSTS)

NOTE:
1. REFERENCE THIS SHEET WITH SHEET 356 ALONG WITH SHEET 359 FOR BR 14 DETAILS AND SHEET 360 FOR BR 17 DETAILS.

NOT TO SCALE



PROJECT NAME: ROCHESTER	
PROJECT NUMBER: ER STP 0162(21)	
FILE NAME: z13cl76grapr02.dgn	PLOT DATE: 1/11/2017
PROJECT LEADER: D. GOZALKOWSKI	DRAWN BY: J. HEALD
DESIGNED BY: J. OLSEN	CHECKED BY: J. SHIELDS
GUARDRAIL APPROACH SECTION DETAIL SHEET 2 SHEET 357 OF 360	