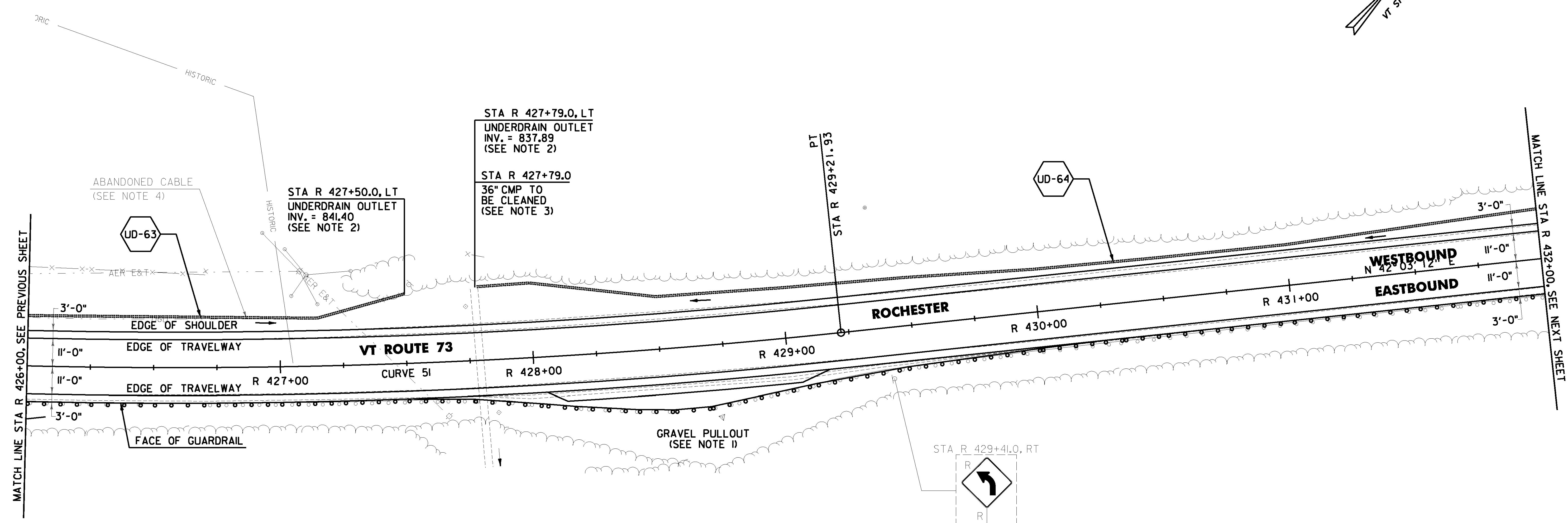
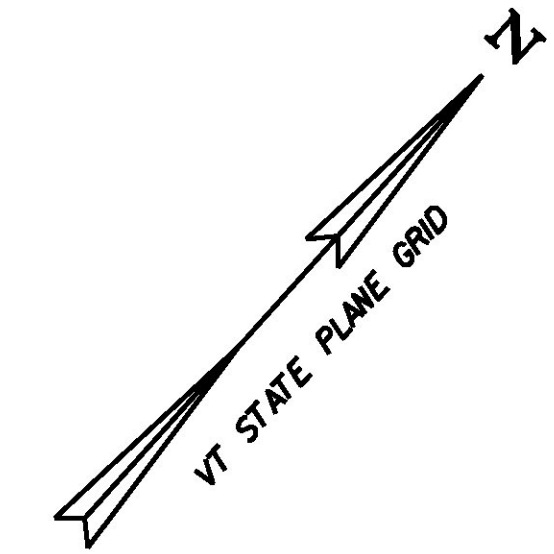


DURABLE 4 INCH WHITE LINE (OPTION ITEM) AND TEMPORARY 4 INCH WHITE LINE, PAINT (ALL LINES WILL INCLUDE EDGE LINE BREAKS AND RADIUS FOR TOWN HIGHWAYS)
 ROCHESTER:
 STA R 426+00.00 - STA R 432+00.00 LT & RT

DURABLE 4 INCH YELLOW LINE, (OPTION ITEM) AND TEMPORARY 4 INCH YELLOW LINE, PAINT (ALL LINES WILL INCLUDE C/L BREAKS FOR TOWN HIGHWAYS) S = SOLID, D = DASHED
 ROCHESTER:
 STA R 426+00.00 - STA R 432+00.00 LT & RT
 S - S

CLEANING CULV. PIPE IN-PLACE (GREATER THAN 24 IN.)
 ROCHESTER:
 STA R 427+79.0 LT/RT

REMOVING SIGNS AS SHOWN - 1



MATCH LINE STA R 426+00, SEE PREVIOUS SHEET

MATCH LINE STA R 432+00, SEE NEXT SHEET

6 INCH UNDERDRAIN PIPE
 ROCHESTER:
 STA R 426+00.0 - STA R 427+50.0 LT
 STA R 427+79.0 - STA R 432+00.0 LT

STEEL BEAM GUARDRAIL, GALVANIZED W/ 8 FEET POSTS
 ROCHESTER:
 STA R 426+00.0 - STA R 432+00.0 RT

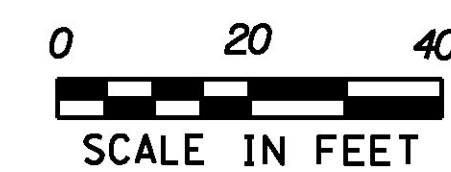
REMOVAL AND DISPOSAL OF GUARDRAIL
 ROCHESTER:
 STA R 426+00.0 - STA R 432+00.0 RT

PROJECT DEMARCATION FENCE
 ROCHESTER:
~~STA R 426+00.0 - STA R 432+00.0 LT~~
~~STA R 426+00.0 - STA R 428+13.0 RT~~
~~STA R 429+05.0 - STA R 432+00.0 RT~~

BARRIER FENCE
 ROCHESTER:
~~STA R 426+00.0 - STA R 428+05.0 LT~~

CURVE 51
 $\Delta = 15^{\circ}04'49''$ LT
 $D = 2^{\circ}17'31''$
 $R = 2500.00'$
 $T = 330.92'$
 $L = 658.01'$
 $E = 21.81'$
 $e = 0.044$ FT/FT

SIGN LEGEND
 R = REMOVE
 S = SALVAGE
 N = NEW
 RET = RETAIN
 B-B = BACK TO BACK
 EXISTING = _____
 NEW = _____
 R = RETURN TO TOWN OF ROCHESTER



NOTES:

1. PROVIDE A FOUR FT WIDE, 1/2" TYPE IVS APRON FOR THE EXISTING GRAVEL PULLOUT, ANY REQUIRED EXCAVATION SHALL BE PERFORMED AS DIRECTED BY THE ENGINEER AND PAID FOR UNDER ITEM 608.25 ALL PURPOSE EXCAVATOR RENTAL, TYPE I.
2. SEE SHEETS 26 & 27 FOR UNDERDRAIN DETAILS.
3. THE CONTRACTOR SHALL ADJUST THE PROPOSED SIDE SLOPE TO AVOID FILLING IN THE EXISTING PIPE AS DIRECTED BY THE ENGINEER.
4. THE CONTRACTOR SHALL CALL DIG SAFE AT 811 TO VERIFY LOCATION OF BURIED ABANDONED CABLE.

PROJECT NAME: ROCHESTER
 PROJECT NUMBER: ER STP 0162(21)

FILE NAME: z13cl76bdr.dgn
 PROJECT LEADER: D. GOZALKOWSKI
 DESIGNED BY: J. OLSEN
 PROJECT LAYOUT SHEET #74

PLOT DATE: 1/11/2017
 DRAWN BY: J. HEALD
 CHECKED BY: J. SHIELDS
 SHEET 106 OF 360