

DURABLE 4 INCH WHITE LINE (OPTION ITEM) AND TEMPORARY 4 INCH WHITE LINE PAINT (ALL LINES WILL INCLUDE EDGE LINE BREAKS AND RADIUS FOR TOWN HIGHWAYS)
 ROCHESTER:
 STA R 396+00.00 - STA R 402+00.00 LT & RT
 STA R 397+00.32 EDGE LINES LT, TH-33

DURABLE 4 INCH YELLOW LINE (OPTION ITEM) AND TEMPORARY 4 INCH YELLOW LINE PAINT (ALL LINES WILL INCLUDE C/L BREAKS FOR TOWN HIGHWAYS) S = SOLID, D = DASHED
 ROCHESTER:
 STA R 396+00.00 - STA R 402+00.00 LT & RT
 STA R 397+00.32 DOUBLE SOLID LT, TH-33

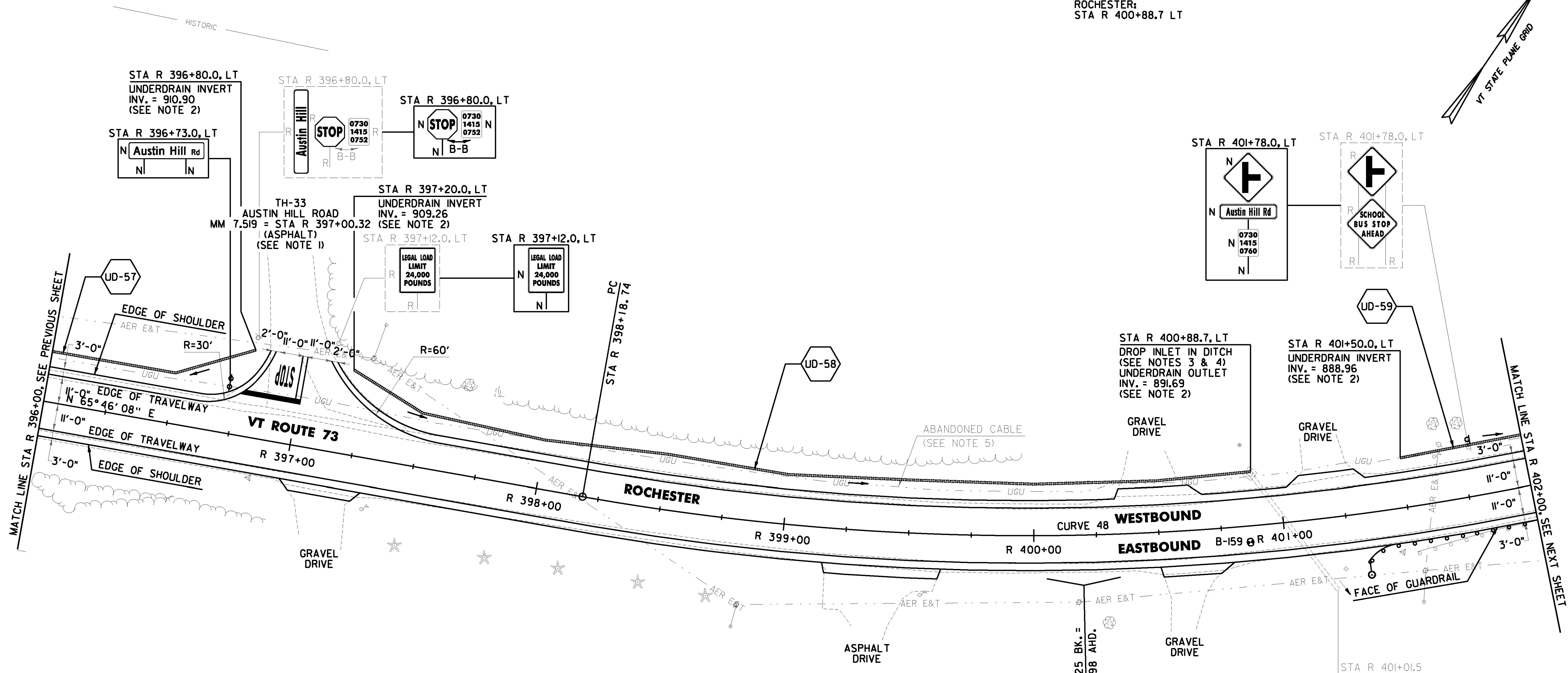
DURABLE 24 INCH STOP BAR (OPTION ITEM) AND TEMPORARY 24 INCH STOP BAR, PAINT
 ROCHESTER:
 STA R 397+00.32 LT, TH-33

DURABLE LETTER OR SYMBOL (OPTION ITEM)
 ROCHESTER:
 STA R 397+00.32 LT, TH-33, "S,T,O,P" (4 EA)

TEMPORARY LETTER OR SYMBOL, PAINT
 ROCHESTER:
 STA R 397+00.32 LT, TH-33, "S,T,O,P" (8 EA)

SPECIAL PROVISION (CORING CONCRETE)
 ROCHESTER:
 STA R 400+88.7 LT

REMOVING SIGNS AS SHOWN - 6



PROJECT DEMARCATION FENCE
 ROCHESTER:
 STA R 396+00.0 - STA R 402+00.0
 STA R 396+00.0 - STA R 396+86.0 LT
 STA R 397+00.0 - STA R 397+02.0 RT
 STA R 397+13.0 - STA R 400+34.0 LT
 STA R 397+27.0 - STA R 399+17.0 RT
 STA R 399+62.0 - STA R 400+51.0 RT
 STA R 400+63.0 - STA R 401+08.0 LT
 STA R 400+74.0 - STA R 402+00.0 RT
 STA R 401+30.0 - STA R 402+00.0 LT

REHAB DROP INLETS, CATCH BASINS OR MANHOLES CLASS I, II OR III (SEE NOTE 4)
 ROCHESTER:
 STA R 400+88.7, LT

STEEL BEAM GUARDRAIL, GALVANIZED W/ 8 FEET POSTS
 ROCHESTER:
 STA R 401+31.8 - STA R 402+00.0 RT

ANCHOR FOR STEEL BEAM RAIL
 ROCHESTER:
 STA R 401+40.3 RT

6 INCH UNDERDRAIN PIPE
 ROCHESTER:
 STA R 396+00.0 - STA R 396+80.0 LT
 STA R 397+20.0 - STA R 400+88.7 LT
 STA R 401+50.0 - STA R 402+00.0 LT

BARRIER FENCE
 ROCHESTER:
 STA R 396+00.0 - STA R 396+86.0 LT
 STA R 396+00.0 - STA R 397+02.0 RT
 STA R 397+13.0 - STA R 397+93.0 LT
 STA R 397+27.0 - STA R 399+17.0 RT
 STA R 399+62.0 - STA R 400+51.0 RT
 STA R 400+74.0 - STA R 402+00.0 RT

REMOVAL AND DISPOSAL OF GUARDRAIL
 ROCHESTER:
 STA R 401+51.0 - STA R 402+00.0 RT

DELINEATOR WITH STEEL POST
 ROCHESTER:
 STA R 401+31.8 RT

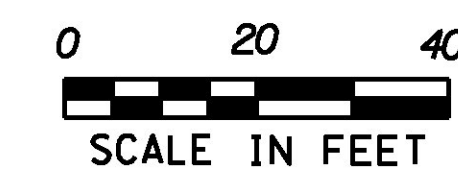
NOTES:

- PAVING LIMIT ON ALL TOWN HIGHWAYS SHALL BE MEASURED 25 FT BACK FROM VT. ROUTE 73 EDGE OF SHOULDER UNLESS DENOTED OTHERWISE ON THE PLANS OR AS DIRECTED BY THE ENGINEER.
- SEE SHEETS 26 & 27 FOR UNDERDRAIN DETAILS.
- THE CONTRACTOR SHALL ADJUST THE PROPOSED SIDE SLOPE TO AVOID FILLING IN THE EXISTING DROP INLET AS DIRECTED BY THE ENGINEER.
- THE CONTRACTOR SHALL REHABILITATE THE EXISTING DROP INLETS, CATCH BASINS OR MANHOLES TO A DEPTH AS DIRECTED BY THE ENGINEER. ALL REHABILITATION WORK WILL BE PAID FOR UNDER THE APPLICABLE REHABILITATION ITEM AS DIRECTED BY THE ENGINEER. ALL EXISTING UTILITIES MARKED "TO REMAIN" SHALL NOT BE ALTERED OR REHABILITATED UNLESS DIRECTED OTHERWISE BY THE ENGINEER.
- THE CONTRACTOR SHALL CALL DIG SAFE AT 811 TO VERIFY LOCATION OF BURIED ABANDONED CABLE.

P.I. STA R 400+22.25 BK. =
 P.T. STA R 400+16.98 AHD.

CURVE 48
 $\Delta = 22^\circ 34' 02''$ LT
 $D = 5^\circ 37' 02''$
 $R = 1020.00'$
 $T = 203.51'$
 $L = 401.75'$
 $E = 20.10'$
 $e = 0.076$ FT/FT

SOIL BORING DATA			
BORING #	DEPTH (FT.)	PCC	COMMENTS
B-159	5.0	NO	



PROJECT NAME: ROCHESTER
 PROJECT NUMBER: ER STP 0162(21)
 FILE NAME: z13cl76bdr.dgn
 PROJECT LEADER: D. GOZALKOWSKI
 DESIGNED BY: J. OLSEN
 PROJECT LAYOUT SHEET #69
 PLOT DATE: 1/11/2017
 DRAWN BY: J. HEALD
 CHECKED BY: J. SHIELDS
 SHEET 101 OF 360