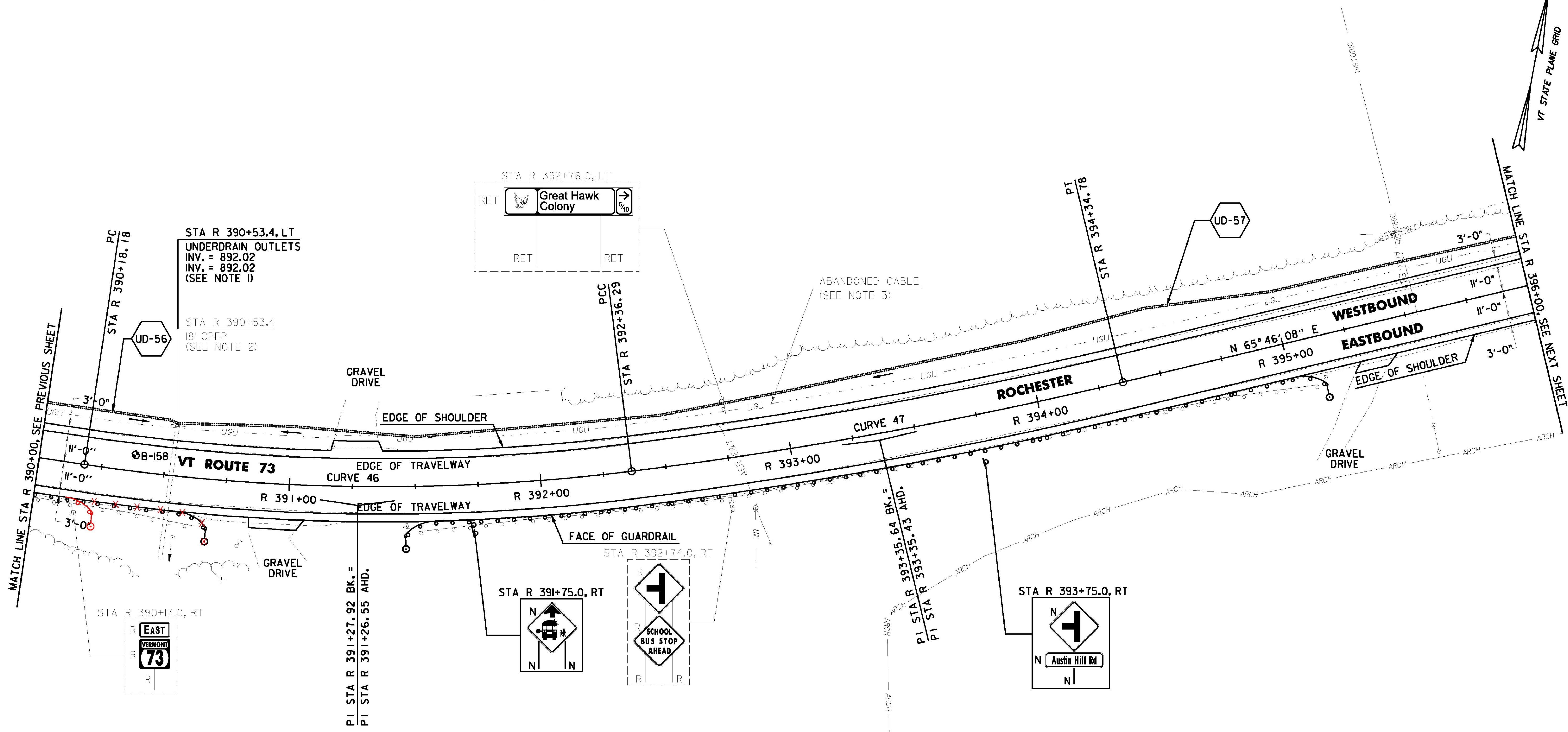
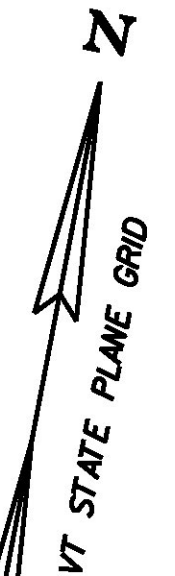


DURABLE 4 INCH WHITE LINE (OPTION ITEM) AND TEMPORARY 4 INCH WHITE LINE, PAINT (ALL LINES WILL INCLUDE C/L BREAKS AND RADIUS FOR TOWN HIGHWAYS)  
 ROCHESTER:  
 STA R 390+00.00 - STA 396+00.00 LT & RT

DURABLE 4 INCH YELLOW LINE (OPTION ITEM) AND TEMPORARY 4 INCH YELLOW LINE, PAINT (ALL LINES WILL INCLUDE C/L BREAKS FOR TOWN HIGHWAYS) S = SOLID, D = DASHED  
 ROCHESTER:  
 STA R 390+00.00 - STA 396+00.00 LT S - S  
 RT S - S

REMOVING SIGNS AS SHOWN - 4



**PROJECT DEMARCATION FENCE**  
 ROCHESTER:  
 STA R 390+00.0 - STA R 396+00.0  
 STA R 390+00.0 - STA R 391+17.0 LT  
 STA R 390+00.0 - STA R 390+85.0 RT  
 STA R 391+03.0 - STA R 395+25.0 RT  
 STA R 391+35.0 - STA R 396+00.0 LT  
 STA R 395+39.0 - STA R 396+00.0 RT

**STEEL BEAM GUARDRAIL, GALVANIZED W/ 8 FEET POSTS**  
 ROCHESTER:  
 STA R 390+00.0 - STA R 390+60.5 RT  
 STA R 391+45.5 - STA R 395+12.0 RT

**ANCHOR FOR STEEL BEAM RAIL**  
 ROCHESTER:  
 STA R 390+52.0 RT  
 STA R 391+54.0 RT  
 STA R 395+03.5 RT

**6 INCH UNDERDRAIN PIPE**  
 ROCHESTER:  
 STA R 390+00.0 - STA R 390+53.4 LT  
 STA R 390+53.4 - STA R 396+00.0 LT

**BARRIER FENCE**  
 ROCHESTER:  
 STA R 392+20.0 - STA R 395+25.0 RT  
 STA R 394+54.0 - STA R 396+00.0 LT  
 STA R 395+39.0 - STA R 396+00.0 RT

**REMOVAL AND DISPOSAL OF GUARDRAIL**  
 ROCHESTER:  
 STA R 390+00.0 - STA R 390+64.0 RT  
 STA R 391+51.0 - STA R 395+10.0 RT

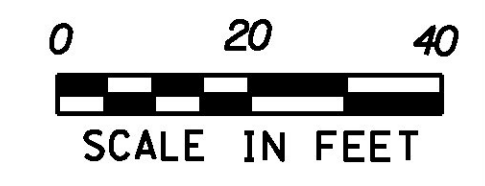
**DELINEATOR WITH STEEL POST**  
 ROCHESTER:  
 STA R 390+60.5 RT  
 STA R 391+45.5 RT  
 STA R 395+12.0 RT

SOIL BORING DATA			
BORING #	DEPTH (FT.)	PCC	COMMENTS
B-158	5.0	NO	

**CURVE 46**  
 $\Delta = 15^{\circ}37'16''$  LT  
 $D = 7^{\circ}09'43''$   
 $R = 800.00$   
 $T = 109.74'$   
 $L = 218.11'$   
 $E = 7.49'$   
 $e = 0.080$  FT/FT

**CURVE 47**  
 $\Delta = 6^{\circ}19'06''$  LT  
 $D = 3^{\circ}10'59''$   
 $R = 1800.00'$   
 $T = 99.35'$   
 $L = 198.49'$   
 $E = 2.74'$   
 $e = 0.056$  FT/FT

**SIGN LEGEND**  
 R = REMOVE  
 S = SALVAGE  
 N = NEW  
 RET = RETAIN  
 B-B = BACK TO BACK  
 EXISTING = \_\_\_\_\_  
 NEW = \_\_\_\_\_  
 R = RETURN TO TOWN OF ROCHESTER



- NOTES:**
- SEE SHEETS 26 & 27 FOR UNDERDRAIN DETAILS.
  - THE CONTRACTOR SHALL ADJUST THE PROPOSED SIDE SLOPE TO AVOID FILLING IN THE EXISTING PIPE AS DIRECTED BY THE ENGINEER.
  - THE CONTRACTOR SHALL CALL DIG SAFE AT 811 TO VERIFY LOCATION OF BURIED ABANDONED CABLE.

<b>PROJECT NAME:</b> ROCHESTER	
<b>PROJECT NUMBER:</b> ER STP 0162(21)	
<b>FILE NAME:</b> z13cl76bdr.dgn	<b>PLOT DATE:</b> 1/11/2017
<b>PROJECT LEADER:</b> D. GOZALKOWSKI	<b>DRAWN BY:</b> J. HEALD
<b>DESIGNED BY:</b> J. OLSEN	<b>CHECKED BY:</b> J. SHIELDS
<b>PROJECT LAYOUT SHEET #68</b>	<b>SHEET 100 OF 360</b>