

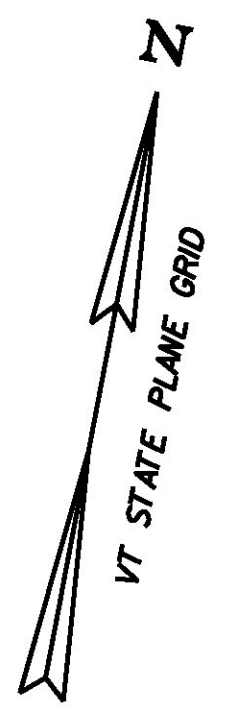
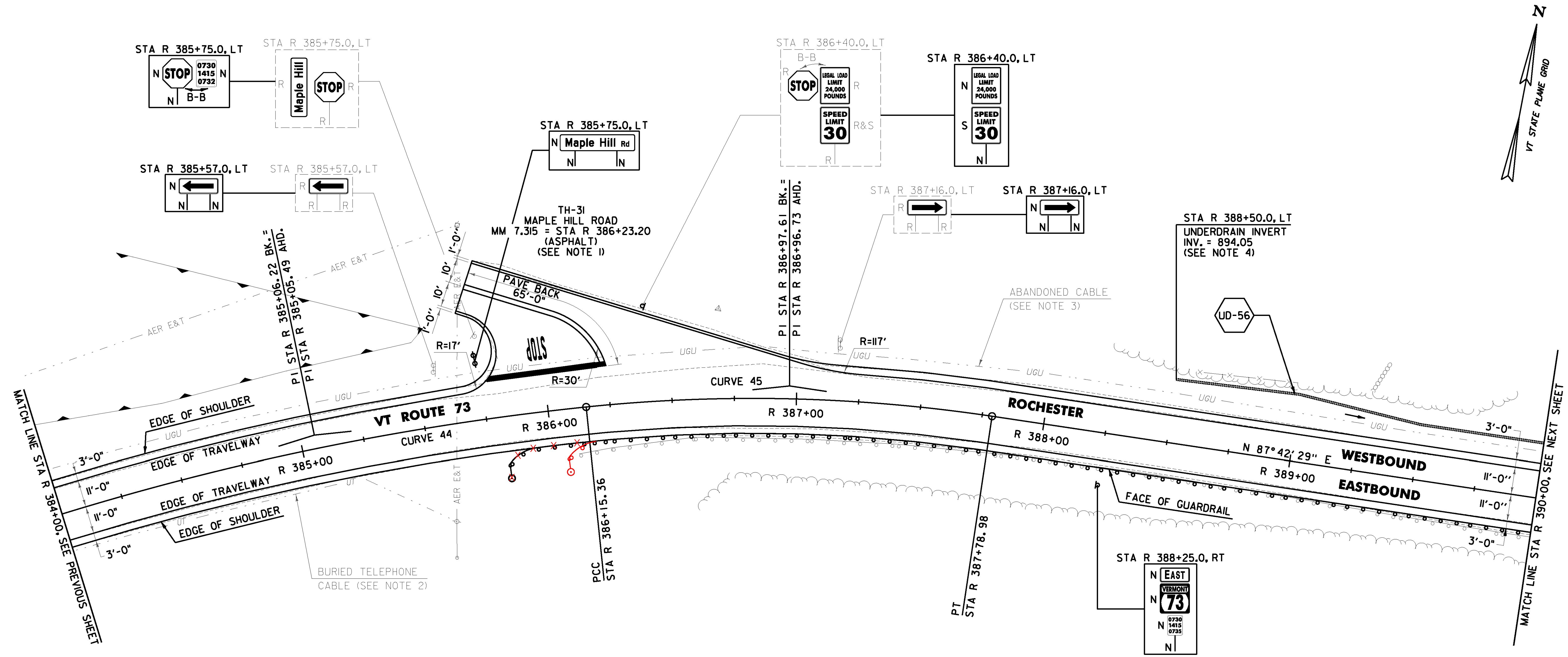
DURABLE 4 INCH WHITE LINE (OPTION ITEM) AND TEMPORARY 4 INCH WHITE LINE, PAINT (ALL LINES WILL INCLUDE EDGE LINE BREAKS AND RADIUS FOR TOWN HIGHWAYS)
 ROCHESTER:
 STA R 384+00.00 - STA R 390+00.00 LT & RT
 STA R 386+23.20 EDGE LINED LT, TH-3I

DURABLE 4 INCH YELLOW LINE (OPTION ITEM) AND TEMPORARY 4 INCH YELLOW LINE, PAINT (ALL LINES WILL INCLUDE C/L BREAKS FOR TOWN HIGHWAYS) S = SOLID, D = DASHED
 ROCHESTER:
 STA R 384+00.00 - STA R 390+00.00 LT & RT
 STA R 386+23.20 DOUBLE SOLID LT, TH-3I

DURABLE 24 INCH STOP BAR (OPTION ITEM) AND TEMPORARY 24 INCH STOP BAR, PAINT
 ROCHESTER:
 STA R 386+23.20 LT, TH-3I

DURABLE LETTER OR SYMBOL (OPTION ITEM) ROCHESTER:
 STA R 386+23.20 LT, TH-3I, "S,T,O,P" (4 EA)
 TEMPORARY LETTER OR SYMBOL, PAINT ROCHESTER:
 STA R 386+23.20 LT, TH-3I, "S,T,O,P" (8 EA)

REMOVING SIGNS AS SHOWN - 7
 ERECTING SALVAGED SIGNS AS SHOWN - 1



6 INCH UNDERDRAIN PIPE
 ROCHESTER:
 STA R 388+50.0 - STA R 390+00.0 LT
 STEEL BEAM GUARDRAIL, GALVANIZED W/ 8 FEET POSTS
 ROCHESTER:
 STA R 385+81.5 - STA R 390+00.0 RT
 ANCHOR FOR STEEL BEAM RAIL
 ROCHESTER:
 STA R 385+90.0 RT

PROJECT DEMARCATION FENCE
 ROCHESTER:
 STA R 384+00.0 - STA R 385+76.0 LT
 STA R 384+00.0 - STA R 390+00.0 RT
 STA R 385+77.0 - STA R 390+00.0 LT
 R 388+50.0
 BARRIER FENCE
 ROCHESTER:
 STA R 384+00.0 - STA R 385+77.0 LT
 REMOVAL AND DISPOSAL OF GUARDRAIL
 ROCHESTER:
 STA R 386+11.0 - STA R 390+00.0 RT
 DELINEATOR WITH STEEL POST
 ROCHESTER:
 STA R 385+81.5 RT

CURVE 44
 $\Delta = 11^{\circ}24'27''$ RT
 $D = 5^{\circ}12'31''$
 $R = 1100.00'$
 $T = 109.87'$
 $L = 219.01'$
 $E = 5.47'$
 $e = 0.058$ FT/FT

CURVE 45
 $\Delta = 14^{\circ}25'23''$ RT
 $D = 8^{\circ}48'53''$
 $R = 650.00'$
 $T = 82.25'$
 $L = 163.62'$
 $E = 5.18'$
 $e = 0.060$ FT/FT

SIGN LEGEND
 R = REMOVE
 S = SALVAGE
 N = NEW
 RET = RETAIN
 B-B = BACK TO BACK
 EXISTING =
 NEW =
 R = RETURN TO TOWN OF ROCHESTER



- NOTES:
- PAVING LIMIT ON ALL TOWN HIGHWAYS SHALL BE MEASURED 25 FT BACK FROM VT. ROUTE 73 EDGE OF SHOULDER UNLESS DENOTED OTHERWISE ON THE PLANS OR AS DIRECTED BY THE ENGINEER.
 - THE CONTRACTOR SHALL CALL DIG SAFE AT 811 TO VERIFY LOCATION OF BURIED TELEPHONE CABLE.
 - THE CONTRACTOR SHALL CALL DIG SAFE AT 811 TO VERIFY LOCATION OF BURIED ABANDONED CABLE.
 - SEE SHEETS 26 & 27 FOR UNDERDRAIN DETAILS.

PROJECT NAME: ROCHESTER
 PROJECT NUMBER: ER STP 0162(21)
 FILE NAME: z13cl76bdr.dgn
 PROJECT LEADER: D. GOZALKOWSKI
 DESIGNED BY: J. OLSEN
 PROJECT LAYOUT SHEET #67
 PLOT DATE: 1/11/2017
 DRAWN BY: J. HEALD
 CHECKED BY: J. SHIELDS
 SHEET 99 OF 360