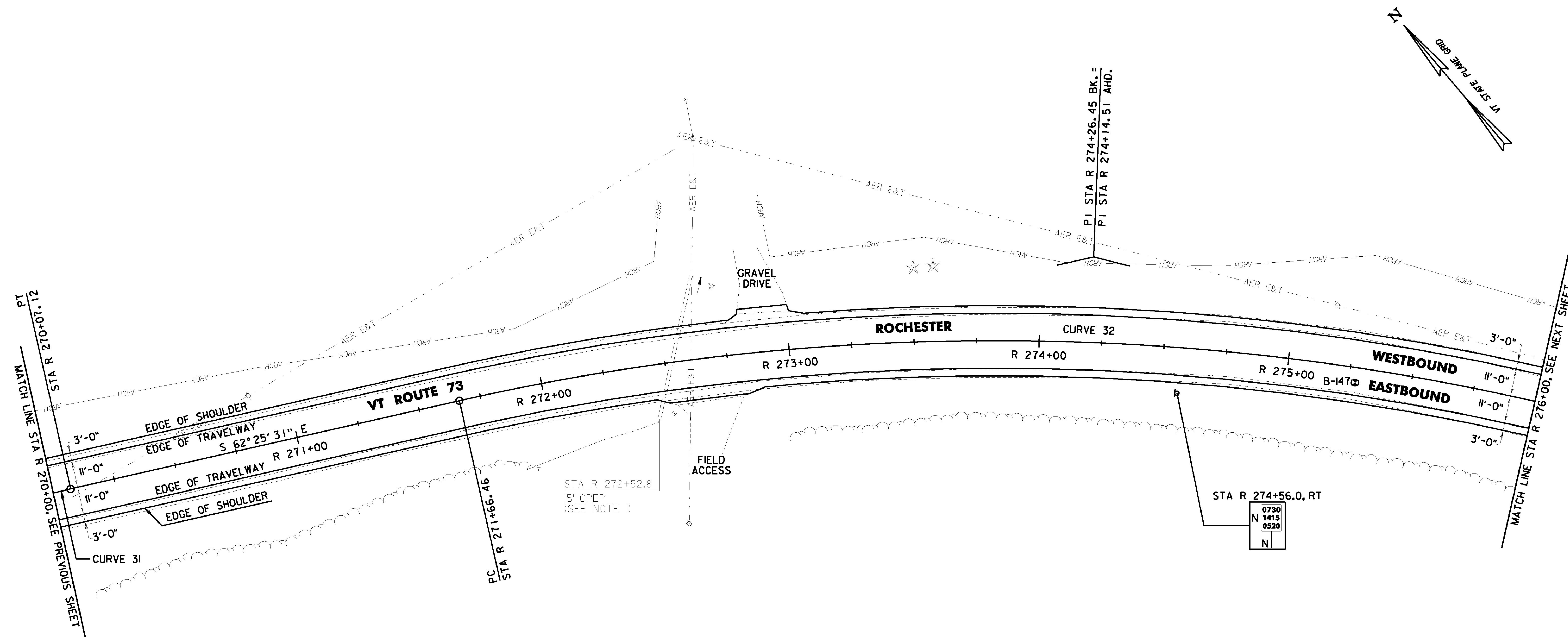


DURABLE 4 INCH WHITE LINE (OPTION ITEM)
AND TEMPORARY 4 INCH WHITE LINE, PAINT
(ALL LINES WILL INCLUDE EDGE LINE BREAKS AND
RADIUS FOR TOWN HIGHWAYS)
ROCHESTER:
STA R 270+00.00 - STA R 276+00.00 LT & RT

DURABLE 4 INCH YELLOW LINE (OPTION ITEM) AND
TEMPORARY 4 INCH YELLOW LINE, PAINT
(ALL LINES WILL INCLUDE C/L BREAKS FOR TOWN
HIGHWAYS) S = SOLID, D = DASHED
ROCHESTER:
STA R 270+00.00 - STA R 276+00.00 LT ☐ RT
S - S



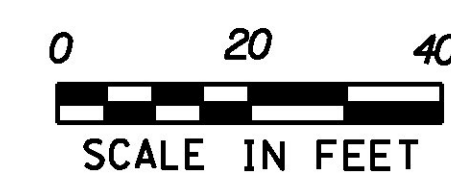
PROJECT DEMARCATION FENCE
ROCHESTER:
~~STA R 270+00.0 - STA R 272+81.0 LT~~
~~STA R 270+00.0 - STA R 272+50.0 RT~~
~~STA R 272+82.0 - STA R 276+00.0 RT~~
~~STA R 273+00.0 - STA R 276+00.0 LT~~

BARRIER FENCE
ROCHESTER:
~~STA R 270+00.0 - STA R 270+26.0 RT~~
~~STA R 270+00.0 - STA R 272+81.0 LT~~
~~STA R 273+00.0 - STA R 276+00.0 LT~~

SOIL BORING DATA			
BORING #	DEPTH (FT.)	PCC	COMMENTS
B-147	5.0	NO	

CURVE 31	CURVE 32
Δ = 15° 47' 56" LT	Δ = 30° 00' 32" RT
D = 3° 22' 13"	D = 5° 54' 24"
R = 1700.00'	R = 970.00'
T = 235.88'	T = 259.99'
L = 468.76'	L = 508.04'
E = 16.29'	E = 34.24'
e = 0.058 FT/FT	e = 0.078 FT/FT

SIGN LEGEND
R = REMOVE
S = SALVAGE
N = NEW
RET = RETAIN
B-B = BACK TO BACK
EXISTING = _____
NEW = _____
R = RETURN TO TOWN
☉ OF ROCHESTER



NOTE:

1. THE CONTRACTOR SHALL ADJUST THE PROPOSED SIDE SLOPE TO AVOID FILLING IN THE EXISTING PIPE AS DIRECTED BY THE ENGINEER.

PROJECT NAME: ROCHESTER	PLOT DATE: 1/11/2017
PROJECT NUMBER: ER STP 0162(21)	DRAWN BY: J. HEALD
FILE NAME: z13cl76bdr.dgn	CHECKED BY: J. SHIELDS
PROJECT LEADER: D. GOZALKOWSKI	PROJECT LAYOUT SHEET #48
DESIGNED BY: J. OLSEN	SHEET 80 OF 360