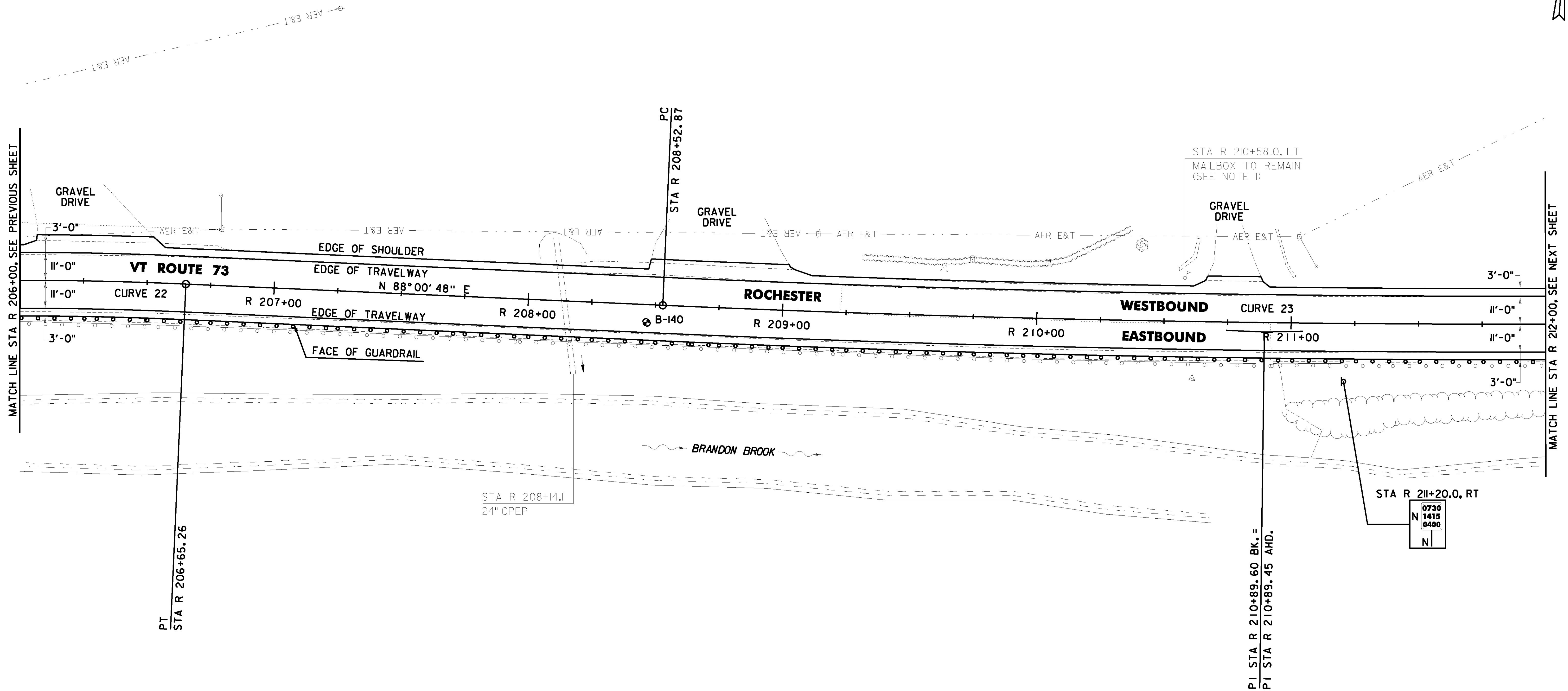


DURABLE 4 INCH WHITE LINE (OPTION ITEM) AND TEMPORARY 4 INCH WHITE LINE, PAINT (ALL LINES WILL INCLUDE EDGE LINE BREAKS AND RADIUS FOR TOWN HIGHWAYS)
 ROCHESTER:
 STA R 206+00.00 - STA R 212+00.00 LT & RT

DURABLE 4 INCH YELLOW LINE (OPTION ITEM) AND TEMPORARY 4 INCH YELLOW LINE, PAINT (ALL LINES WILL INCLUDE C/L BREAKS FOR TOWN HIGHWAYS) S = SOLID, D = DASHED
 ROCHESTER:
 STA R 206+00.00 - STA R 211+20.00 S - D
 STA R 211+20.00 - STA R 212+00.00 S - D

LT C RT
 S - D - D - D



PROJECT DEMARCATION FENCE
 ROCHESTER:
~~STA R 206+00.0 - STA R 206+07.0 LT~~
~~STA R 206+00.0 - STA R 212+00.0 RT~~
~~STA R 206+52.0 - STA R 208+48.0 LT~~
~~STA R 209+02.0 - STA R 210+67.0 LT~~
~~STA R 210+88.0 - STA R 212+00.0 LT~~

STEEL BEAM GUARDRAIL, GALVANIZED W/ 8 FEET POSTS
 ROCHESTER:
 STA R 206+00.0 - STA R 212+00.0 RT

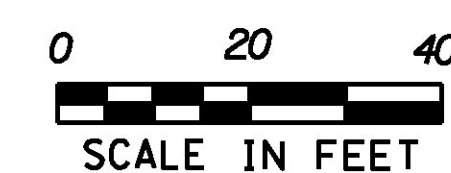
REMOVAL AND DISPOSAL OF GUARDRAIL
 ROCHESTER:
 STA R 206+00.0 - STA R 212+00.0 RT

SOIL BORING DATA			
BORING #	DEPTH (FT.)	PCC	COMMENTS
B-140	5.0	NO	

CURVE 22
 $\Delta = 15^\circ 48' 14''$ RT
 $D = 3^\circ 49' 11''$
 $R = 1500.00'$
 $T = 208.19'$
 $L = 413.74'$
 $E = 14.38'$
 $e = 0.062$ FT/FT

CURVE 23
 $\Delta = 3^\circ 36' 57''$ LT
 $D = 0^\circ 45' 50''$
 $R = 7500.00'$
 $T = 236.73'$
 $L = 473.31'$
 $E = 3.74'$
 $e = 0.020$ FT/FT

SIGN LEGEND
 R = REMOVE
 S = SALVAGE
 N = NEW
 RET = RETAIN
 B-B = BACK TO BACK
 EXISTING =
 NEW =
 R = RETURN TO TOWN OF ROCHESTER



NOTE:
 1. THE CONTRACTOR SHALL ADJUST THE PROPOSED SIDE SLOPE TO AVOID FILLING IN THE EXISTING MAILBOX AS DIRECTED BY THE ENGINEER.

PROJECT NAME: ROCHESTER
PROJECT NUMBER: ER STP 0162(21)
FILE NAME: z13cl76bdr.dgn
PROJECT LEADER: D. GOZALKOWSKI
DESIGNED BY: J. OLSEN
PROJECT LAYOUT SHEET #36
PLOT DATE: 1/11/2017
DRAWN BY: J. HEALD
CHECKED BY: J. SHIELDS
SHEET 68 OF 360