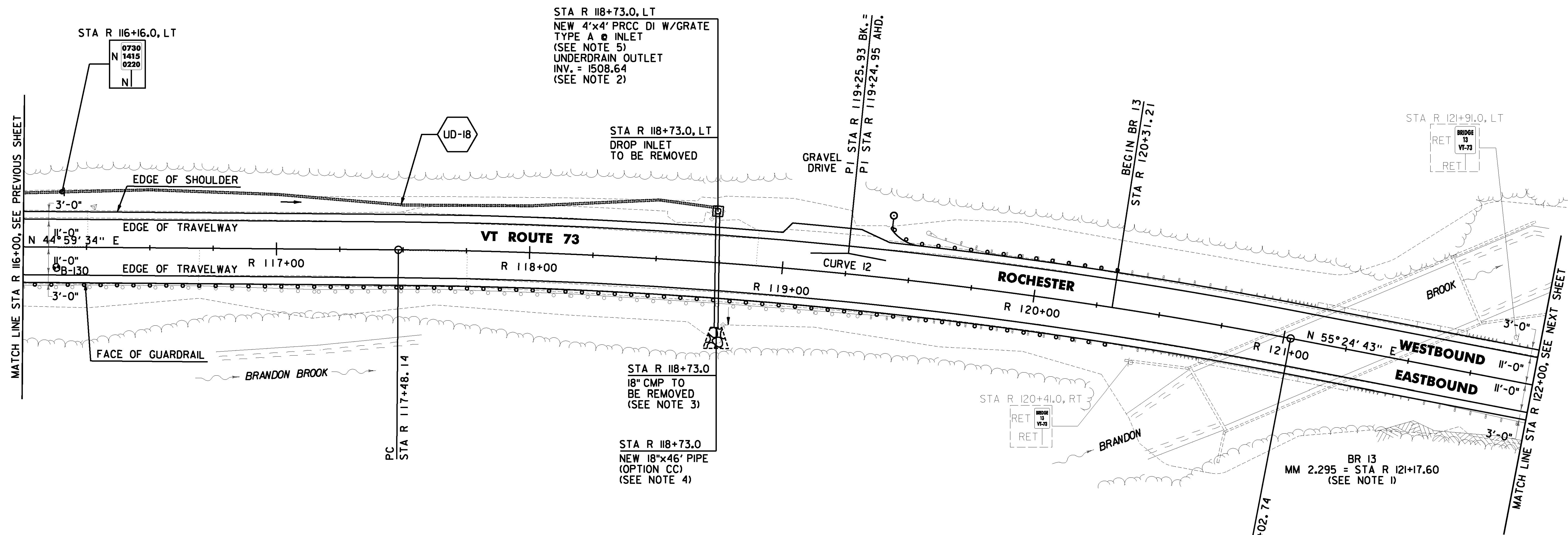
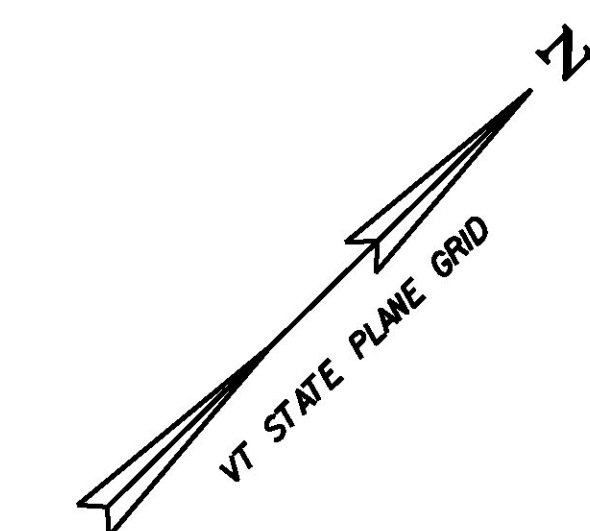


DURABLE 4 INCH WHITE LINE (OPTION ITEM)
AND TEMPORARY 4 INCH WHITE LINE, PAINT
(ALL LINES WILL INCLUDE EDGE LINE BREAKS AND
RADIUS FOR TOWN HIGHWAYS)
ROCHESTER:
STA R 116+00.00 - STA R 122+00.00 LT & RT

DURABLE 4 INCH YELLOW LINE (OPTION ITEM) AND
TEMPORARY 4 INCH YELLOW LINE, PAINT
(ALL LINES WILL INCLUDE C/L BREAKS FOR TOWN
HIGHWAYS) S = SOLID, D = DASHED
ROCHESTER:
STA R 116+00.00 - STA R 122+00.00 LT RT
S - S



6 INCH UNDERDRAIN PIPE
ROCHESTER:
STA R 116+00.0 - STA R 118+73.0 LT

PROJECT DEMARCATION FENCE
ROCHESTER:
~~STA R 116+00.0 - STA R 119+03.0 LT~~
~~STA R 116+00.0 - STA R 122+00.0 RT~~
~~STA R 119+30.0 - STA R 122+00.0 LT~~

STEEL BEAM GUARDRAIL, GALVANIZED
W/ 8 FEET POSTS
ROCHESTER:
STA R 116+00.0 - STA R 120+31.2 RT
~~STA R 119+41.7 - STA R 120+31.2 LT~~

REMOVAL AND DISPOSAL OF GUARDRAIL
ROCHESTER:
STA R 116+00.0 - STA R 120+31.2 RT
~~STA R 119+55.0 - STA R 120+31.2 LT~~

STONE FILL, TYPE II
ROCHESTER:
STA R 119+34.0 RT

DELINEATOR WITH STEEL POST
ROCHESTER:
STA R 119+41.7 LT

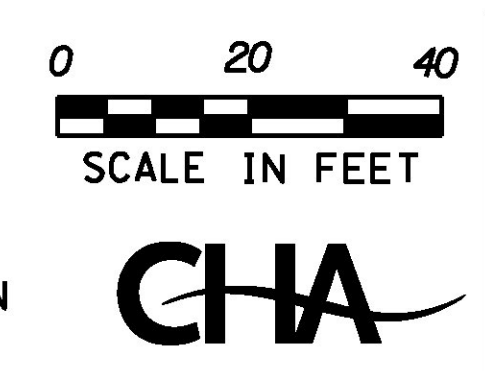
ANCHOR FOR STEEL BEAM RAIL
ROCHESTER:
STA R 119+50.2 LT

SOIL BORING DATA			
BORING #	DEPTH (FT.)	PCC	COMMENTS
B-130	5.0	NO	

CURVE 12
Δ = 10° 25' 09" RT
D = 2° 56' 18"
R = 1950.00'
T = 177.79'
L = 354.60'
E = 8.09'
e = 0.052 FT/FT

LEGEND
ITEM 613.11
STONE FILL, TYPE II

SIGN LEGEND
R = REMOVE
S = SALVAGE
N = NEW
RET = RETAIN
B-B = BACK TO BACK
EXISTING = - - - - -
NEW = _____
R = RETURN TO TOWN
OF ROCHESTER



- NOTES:
- SEE SHEET 19 FOR RECLAIM BRIDGE TRANSITION AREA DETAIL.
 - SEE SHEETS 26 & 27 FOR UNDERDRAIN DETAILS.
 - THE CONTRACTOR SHALL PERFORM ALL EXCAVATION REQUIRED TO REMOVE THE EXISTING PIPE AND INSTALL THE PROPOSED PIPE UNDER ITEM 204.20 TRENCH EXCAVATION OF EARTH AS DIRECTED BY THE ENGINEER.
 - SEE SHEET 24 FOR CULVERT ROADWAY CROSSING DETAIL.
 - THE CONTRACTOR SHALL ADJUST THE PROPOSED SIDE SLOPE IN ORDER TO PLACE DROP INLET IN PROPOSED LOCATION AS DIRECTED BY THE ENGINEER.

PROJECT NAME: ROCHESTER
PROJECT NUMBER: ER STP 0162(21)
FILE NAME: z13cl76bdr.dgn
PROJECT LEADER: D. GOZALKOWSKI
DESIGNED BY: J. OLSEN
PROJECT LAYOUT SHEET #21
PLOT DATE: 1/11/2017
DRAWN BY: J. HEALD
CHECKED BY: J. SHIELDS
SHEET 53 OF 360