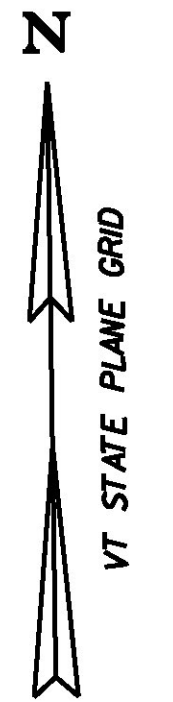


DURABLE 4 INCH WHITE LINE (OPTION ITEM) AND TEMPORARY 4 INCH WHITE LINE, PAINT (ALL LINES WILL INCLUDE EDGE LINE BREAKS AND RADIUS FOR TOWN HIGHWAYS)
 ROCHESTER:
 STA R 38+00.00 - STA R 44+00.00 LT & RT

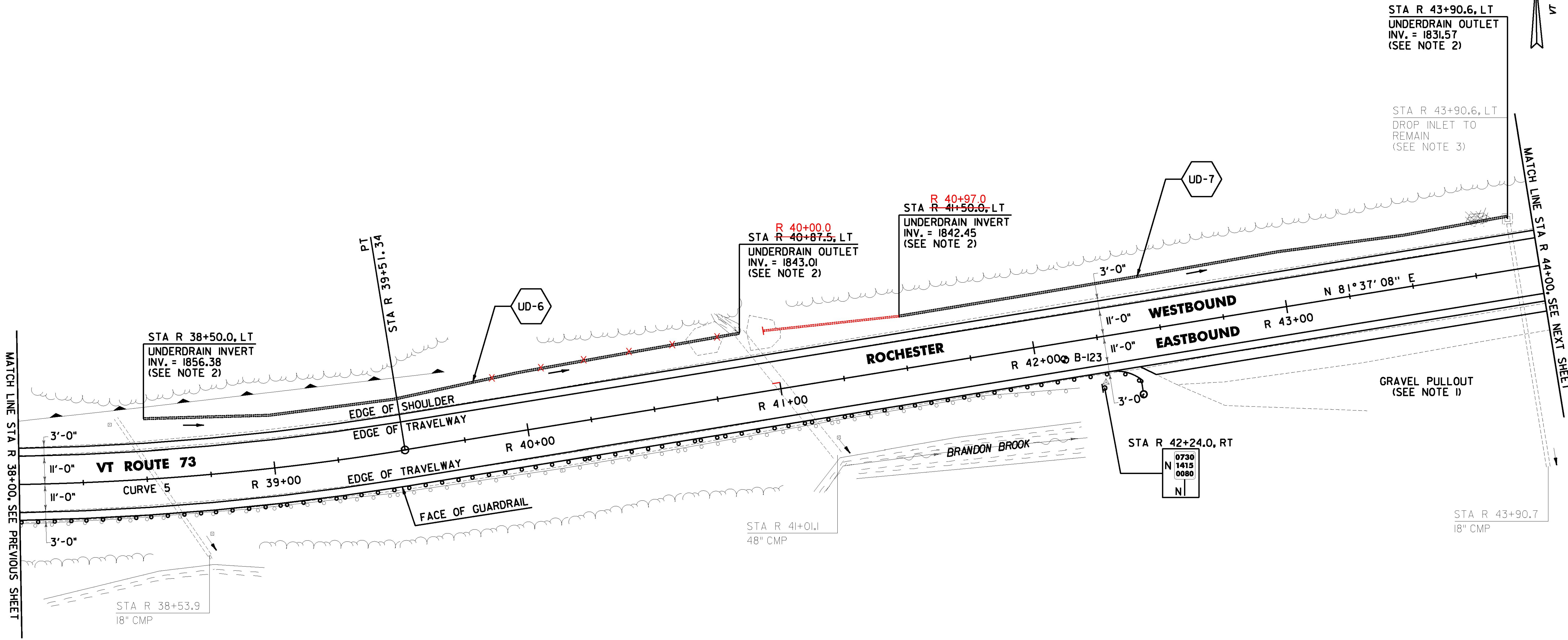
DURABLE 4 INCH YELLOW LINE, (OPTION ITEM) AND TEMPORARY 4 INCH YELLOW LINE, PAINT (ALL LINES WILL INCLUDE C/L BREAKS FOR TOWN HIGHWAYS) S = SOLID, D = DASHED
 ROCHESTER:
 STA R 38+00.00 - STA R 44+00.00 LT & RT
 S - S

SPECIAL PROVISION (CORING CONCRETE)
 ROCHESTER:
 STA R 43+90.6 LT



STA R 43+90.6, LT
 UNDERDRAIN OUTLET
 INV. = 1831.57
 (SEE NOTE 2)

STA R 43+90.6, LT
 DROP INLET TO REMAIN
 (SEE NOTE 3)



6 INCH UNDERDRAIN PIPE
 ROCHESTER:
 STA R 38+50.0 - STA R 40+87.5 LT
 STA R 41+50.0 - STA R 43+90.6 LT

PROJECT DEMARCATION FENCE
 ROCHESTER:
~~STA R 38+00.0 - STA R 44+00.0 LT~~
~~STA R 38+00.0 - STA R 42+46.0 RT~~

BARRIER FENCE
 ROCHESTER:
 STA R 38+00.0 - STA R 40+70.0 LT
 R 38+75 LT

ANCHOR FOR STEEL BEAM RAIL
 ROCHESTER:
 STA R 42+31.5 RT

STEEL BEAM GUARDRAIL, GALVANIZED W/ 8 FEET POSTS
 ROCHESTER:
 STA R 38+00.0 - STA R 42+40.0 RT

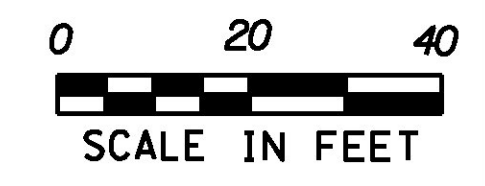
REMOVAL AND DISPOSAL OF GUARDRAIL
 ROCHESTER:
 STA R 38+00.0 - STA R 42+15.0 RT

DELINEATOR WITH STEEL POST
 ROCHESTER:
 STA R 42+40.0 RT

SOIL BORING DATA			
BORING #	DEPTH (FT.)	PCC	COMMENTS
B-123	5.0	NO	

CURVE 5
 $\Delta = 25^{\circ}04'12''$ LT
 $D = 5^{\circ}27'24''$
 $R = 1050.00'$
 $T = 233.45'$
 $L = 459.43'$
 $E = 25.64'$
 $e = 0.076$ FT/FT

SIGN LEGEND
 R = REMOVE
 S = SALVAGE
 N = NEW
 RET = RETAIN
 B-B = BACK TO BACK
 EXISTING =
 NEW =
 R = RETURN TO TOWN OF ROCHESTER



- NOTES:
1. PROVIDE A FOUR FT WIDE, 1/2" TYPE IVS APRON FOR THE EXISTING GRAVEL PULLOUT. ANY REQUIRED EXCAVATION SHALL BE PERFORMED AS DIRECTED BY THE ENGINEER AND PAID FOR UNDER ITEM 608.25 ALL PURPOSE EXCAVATOR RENTAL, TYPE I.
 2. SEE SHEETS 26 & 27 FOR UNDERDRAIN DETAILS.
 3. THE CONTRACTOR SHALL ADJUST THE PROPOSED SIDE SLOPE TO AVOID FILLING IN THE EXISTING DROP INLET AS DIRECTED BY THE ENGINEER.

PROJECT NAME: ROCHESTER	PLOT DATE: 1/11/2017
PROJECT NUMBER: ER STP 0162(21)	DRAWN BY: J. HEALD
FILE NAME: z13cl76bdr.dgn	CHECKED BY: J. SHIELDS
PROJECT LEADER: D. GOZALKOWSKI	PROJECT LAYOUT SHEET #8
DESIGNED BY: J. OLSEN	SHEET 40 OF 360