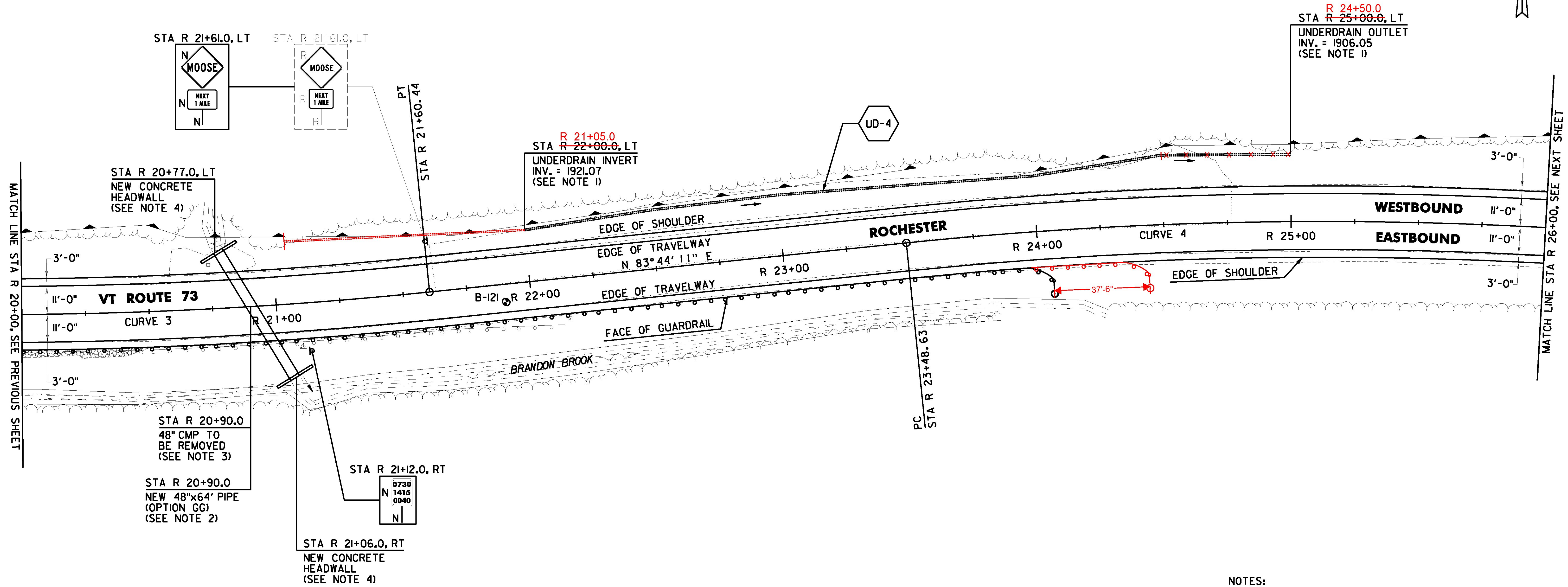
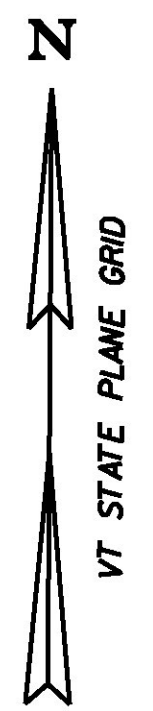


DURABLE 4 INCH WHITE LINE (OPTION ITEM) AND TEMPORARY 4 INCH WHITE LINE, PAINT (ALL LINES WILL INCLUDE EDGE LINE BREAKS AND RADIUS FOR TOWN HIGHWAYS)
 ROCHESTER:
 STA R 20+00.00 - STA R 26+00.00 LT & RT

DURABLE 4 INCH YELLOW LINE (OPTION ITEM) AND TEMPORARY 4 INCH YELLOW LINE, PAINT (ALL LINES WILL INCLUDE C/L BREAKS FOR TOWN HIGHWAYS) S = SOLID, D = DASHED
 ROCHESTER:
 STA R 20+00.00 - STA R 26+00.00 LT & RT
 S - S

REMOVING SIGNS AS SHOWN - 2



6 INCH UNDERDRAIN PIPE
 ROCHESTER:
 STA R 22+00.0 - STA R 25+00.0 LT

ANCHOR FOR STEEL BEAM RAIL
 ROCHESTER:
 STA R 23+97.5 LT

STONE FILL, TYPE I
 ROCHESTER:
 STA R 20+00.0 - STA R 20+50.0 RT

GRUBBING MATERIAL (6")
 ROCHESTER:
 STA R 20+00.0 - STA R 20+50.0 RT

STEEL BEAM GUARDRAIL, GALVANIZED W/ 8 FEET POSTS
 ROCHESTER:
 STA R 20+00.0 - STA R 24+06.0 RT

PROJECT DEMARCATION FENCE
 ROCHESTER:
 STA R 20+00.0 - STA R 26+00.0 LT & RT

BARRIER FENCE
 ROCHESTER:
 STA R 20+00.0 - STA R 26+00.0 LT & RT

GEOTEXTILE FOR SILT FENCE
 ROCHESTER:
 STA R 20+00.0 - STA R 20+50.0 RT

REMOVAL AND DISPOSAL OF GUARDRAIL
 ROCHESTER:
 STA R 20+00.0 - STA R 22+12.0 RT

DELINERATOR WITH STEEL POST
 ROCHESTER:
 STA R 24+06.0 LT

SOIL BORING DATA			
BORING #	DEPTH (FT.)	PCC	COMMENTS
B-121	5.0	NO	

CURVE 3
 $\Delta = 16^{\circ}22'26''$ LT
 $D = 3^{\circ}22'49''$
 $R = 1695.00'$
 $T = 243.86'$
 $L = 484.39'$
 $E = 17.45'$
 $e = 0.058$ FT/FT

CURVE 4
 $\Delta = 22^{\circ}57'09''$ RT
 $D = 3^{\circ}34'52''$
 $R = 1600.00'$
 $T = 324.83'$
 $L = 640.95'$
 $E = 32.64'$
 $e = 0.060$ FT/FT

LEGEND	
	ITEM 613JO STONE FILL, TYPE I

SIGN LEGEND
 R = REMOVE
 S = SALVAGE
 N = NEW
 RET = RETAIN
 B-B = BACK TO BACK
 EXISTING =
 NEW =
 R = RETURN TO TOWN OF ROCHESTER

0 20 40
 SCALE IN FEET

CHA

- NOTES:
- SEE SHEETS 26 & 27 FOR UNDERDRAIN DETAILS.
 - SEE SHEET 24 FOR CULVERT ROADWAY CROSSING DETAIL.
 - THE CONTRACTOR SHALL PERFORM ALL EXCAVATION REQUIRED TO REMOVE THE EXISTING PIPE AND INSTALL THE PROPOSED PIPE UNDER ITEM 204.20 TRENCH EXCAVATION OF EARTH AS DIRECTED BY THE ENGINEER.
 - THE CONTRACTOR SHALL ADJUST PROPOSED SIDE SLOPE IN ORDER TO PLACE HEADWALL IN PROPOSED LOCATION AS DIRECTED BY THE ENGINEER.

PROJECT NAME: ROCHESTER
 PROJECT NUMBER: ER STP 0162(21)

FILE NAME: z13cl76bdr.dgn
 PROJECT LEADER: D. GOZALKOWSKI
 DESIGNED BY: J. OLSEN
 PROJECT LAYOUT SHEET #5

PLOT DATE: 1/11/2017
 DRAWN BY: J. HEALD
 CHECKED BY: J. SHIELDS
 SHEET 37 OF 360