

GPS/NGS CONTROL POINTS

VTGS DISK ROBINSON AZ MK

PID BBCK13
 N = 492231.24
 E = 1545550.85
 ELEV = 948.94

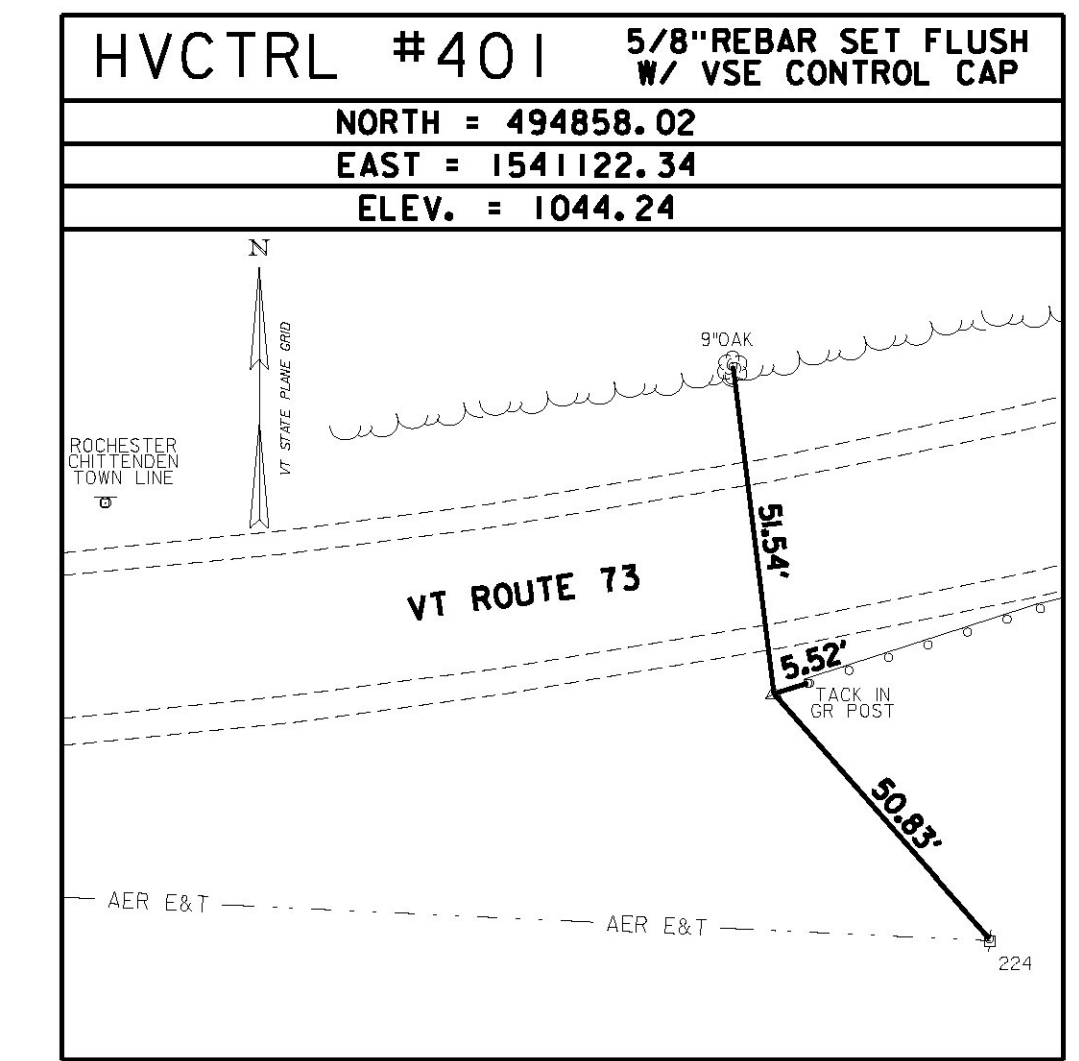
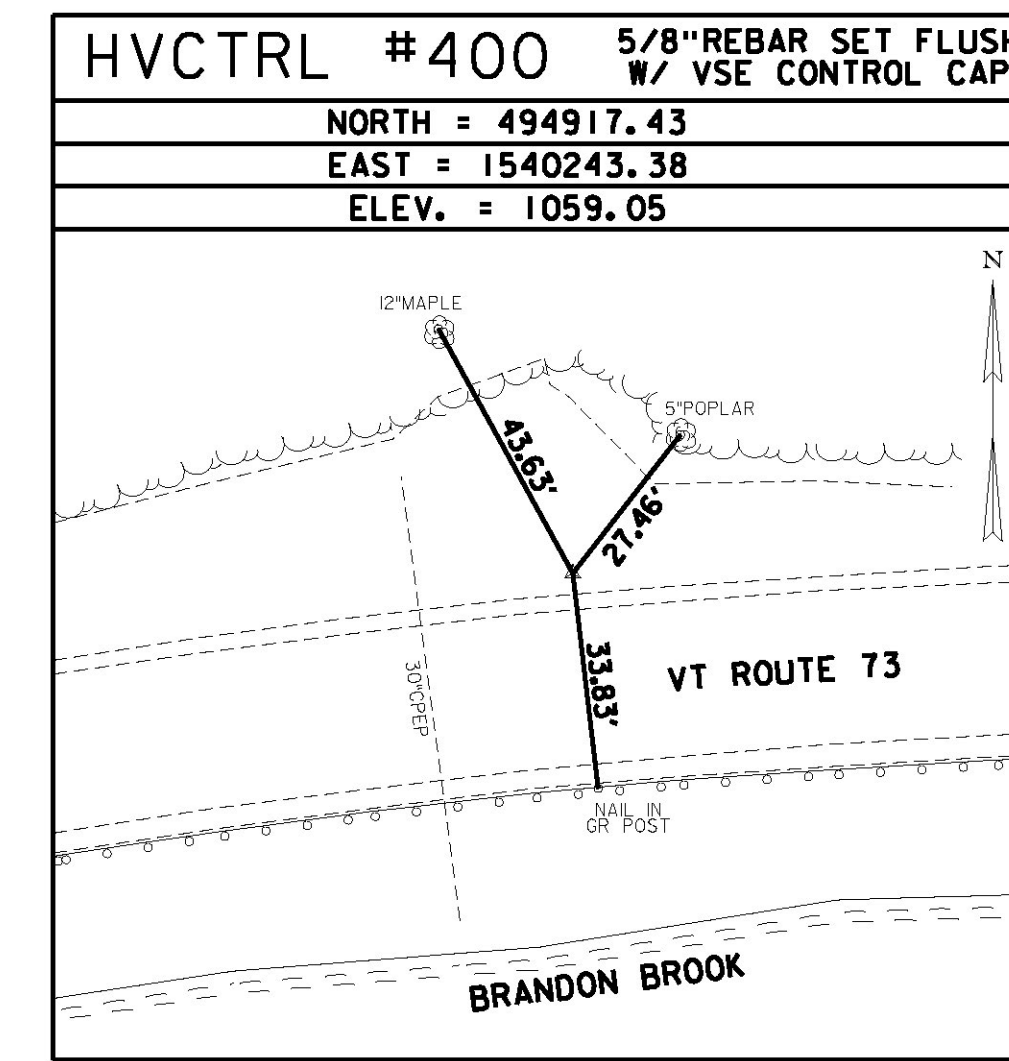
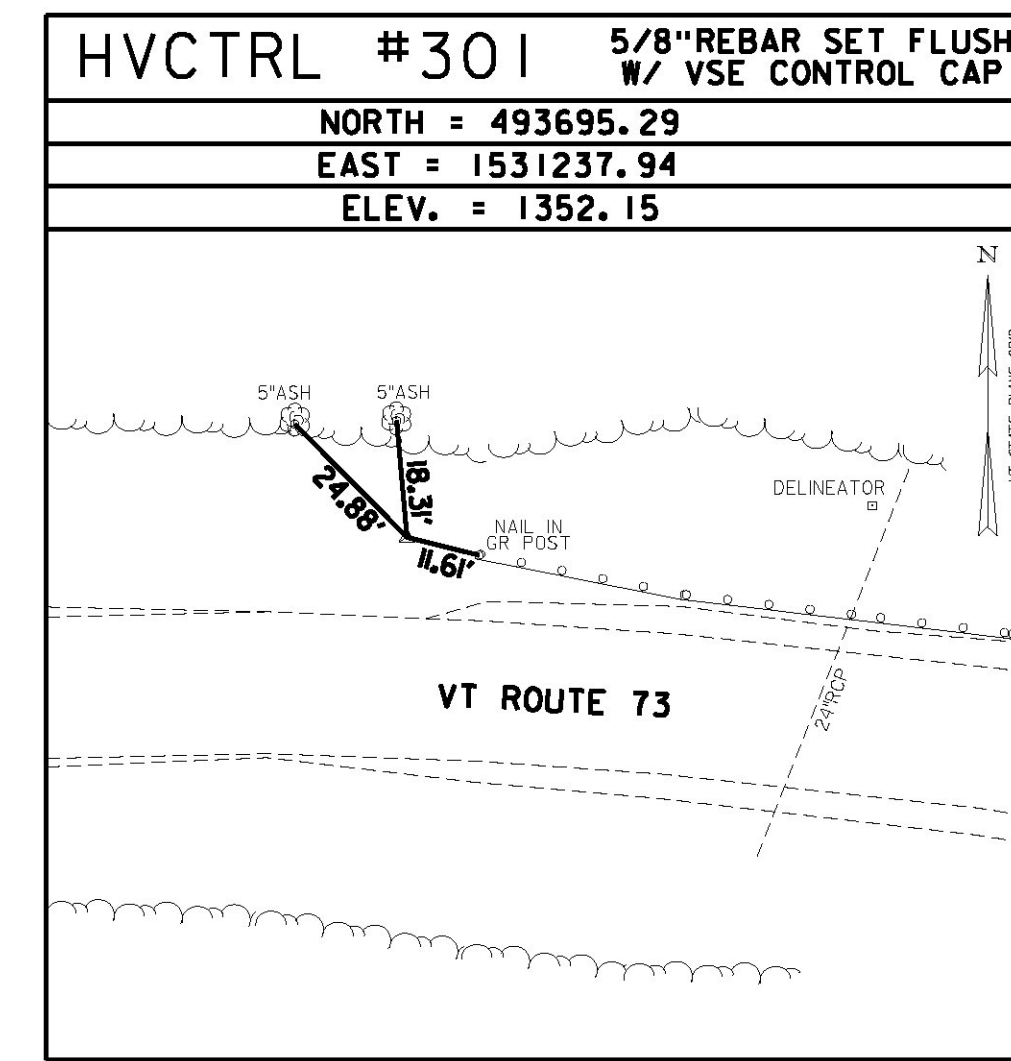
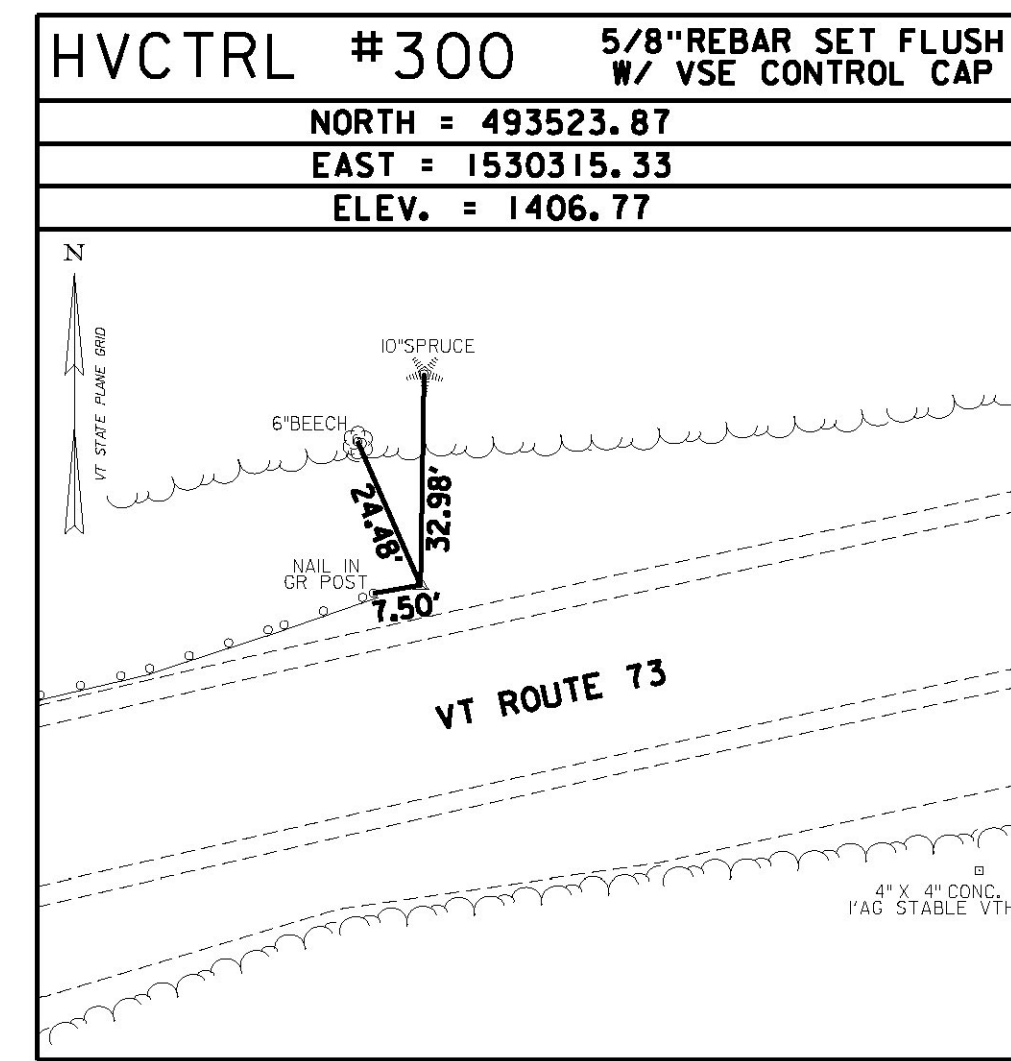
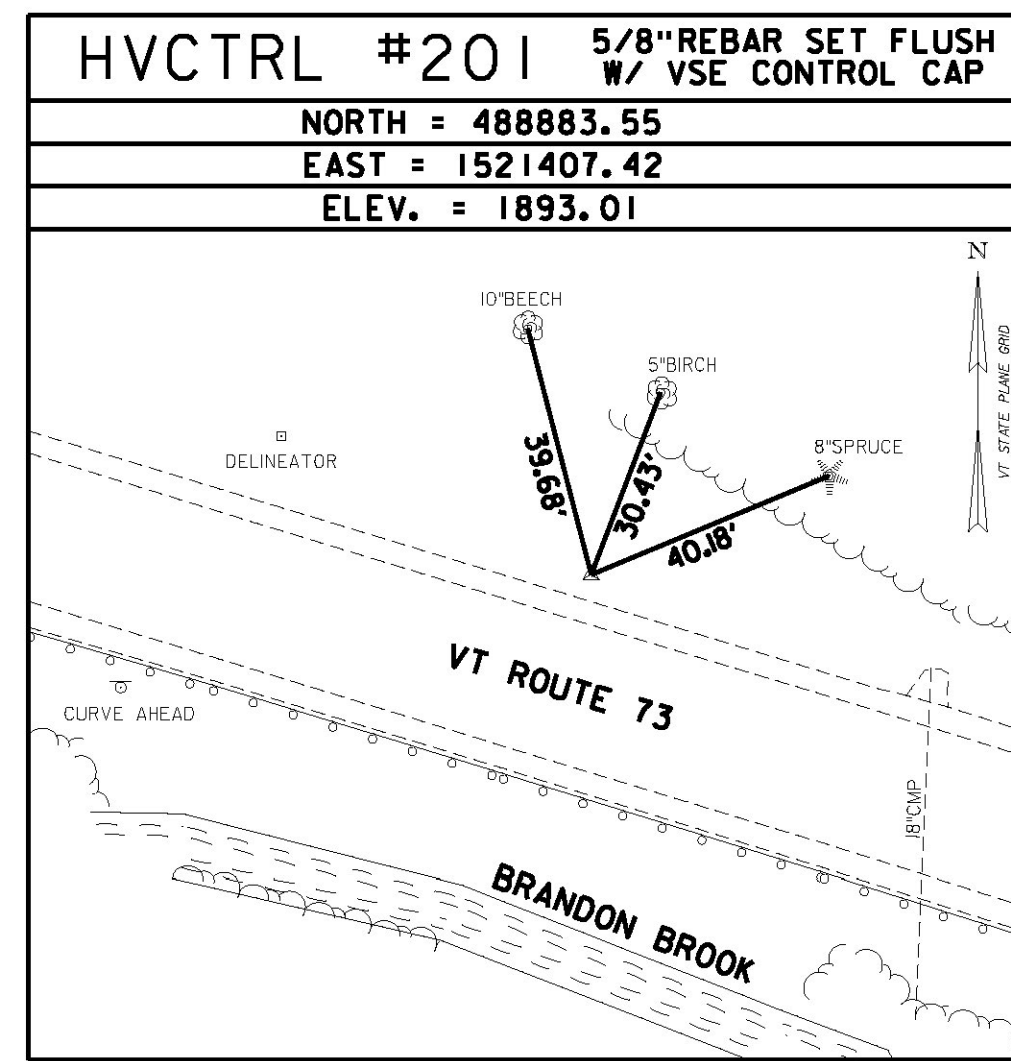
ROCHESTER, VT. ABOUT 150 M NORTHWEST OF THE DRIVE LEADING TO A PARKING AREA FOR THE WHITE RIVER TRAVELWAY AND ABOUT 60 M WEST OF THE CENTER OF A SMALL BRIDGE WITH STONE HEADWALL. THE MARK IS SET 10 CM BELOW GROUND SURFACE IN THE TOP OF A 30 CM DIAMETER CONCRETE MONUMENT. IT IS 7.2 M NORTHEAST OF THE CENTERLINE OF VT ROUTE 73, 21.0 M NORTHWEST OF THE CENTER OF THE NORTHEAST (OUTLET) END OF A 90 CM DIAMETER PLASTIC CULVERT AND 25.6 M EAST OF AND ACROSS THE ROAD FROM POLE NO 88/5/90.

USGS DISK 8 AIM

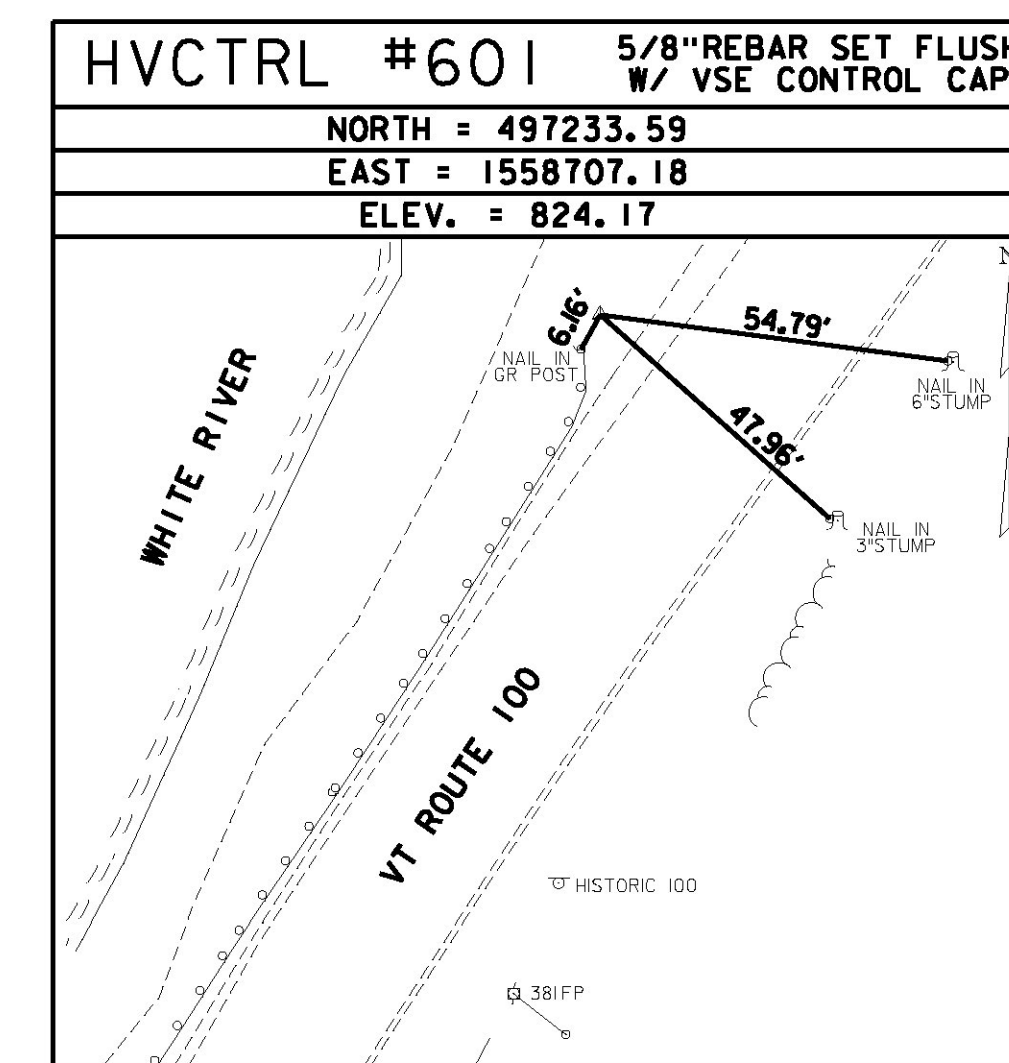
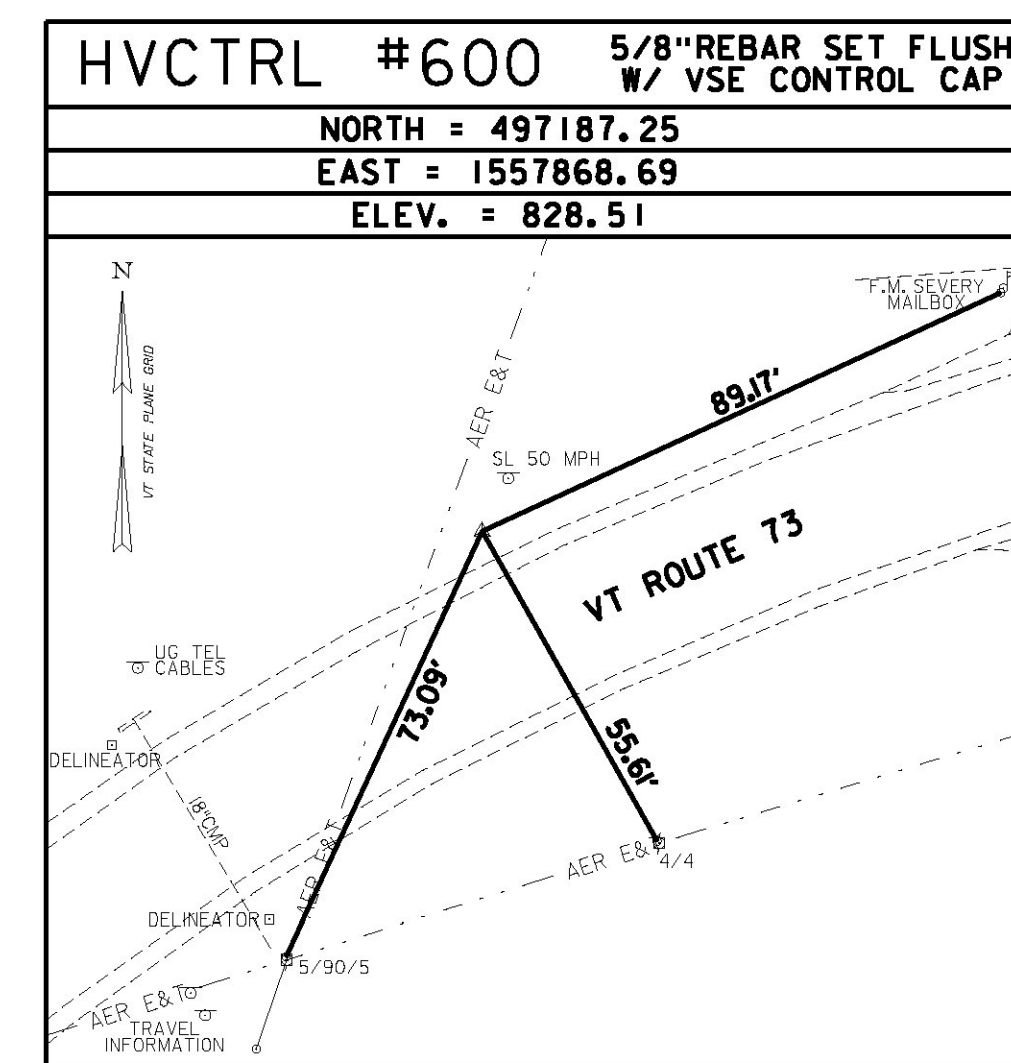
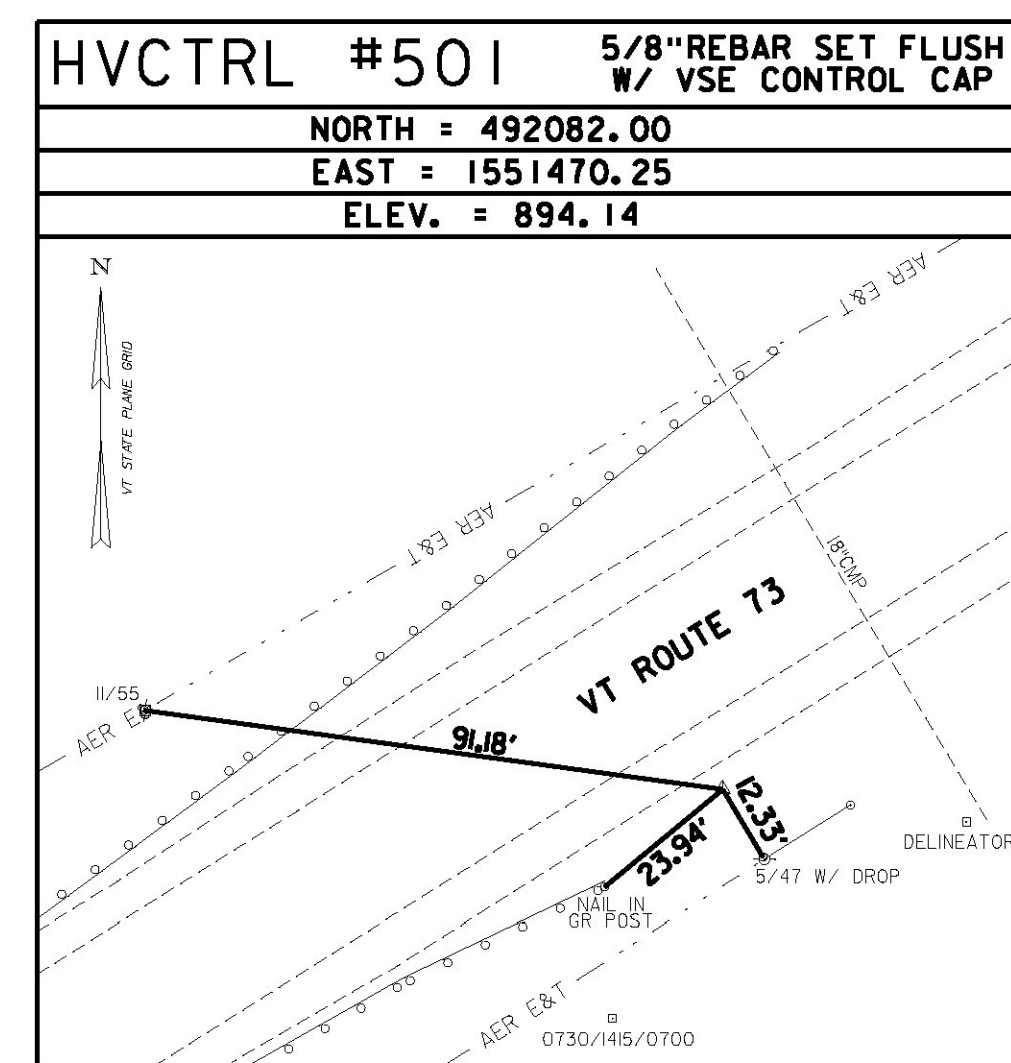
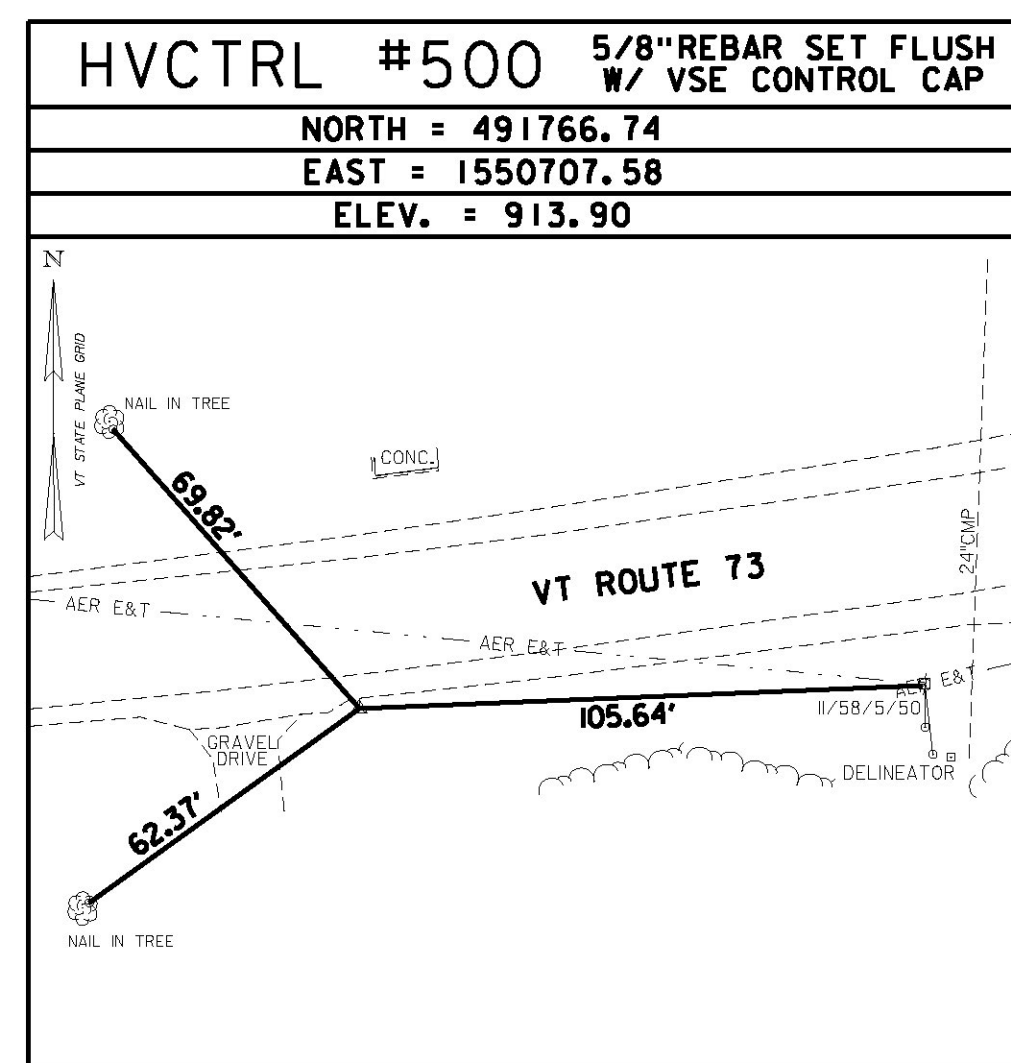
PID GS0345
 N = 491691.85
 E = 1548199.98
 ELEV = 952.32

GENERAL LOCATION, ROBINSON, VT. 1.3 MI (2.1 KM) SOUTHEAST OF, IN NORTH END OF EAST CONCRETE WINGWALL OF BRIDGE. MARK FOUND OKAY IN NOVEMBER 1985, BRIDGE CURBS ARE IN BAD CONDITION.

TRAVERSE TIES



TRAVERSE TIES



• MAIN TRAVERSE COMPLETED: JANUARY 18, 2013 BY VSE, T. CATTANEO-PC, R. GAUVIN

DATUM	
VERTICAL	NAVD 88 FT
HORIZONTAL	NAD 83(2011) sFT
ADJUSTMENT	LSQ



PROJECT NAME: ROCHESTER
 PROJECT NUMBER: ER STP 0162(21)

FILE NAME: z13cl76blt02.dgn
 PROJECT LEADER: D. GOZALKOWSKI
 DESIGNED BY: J. OLSEN
 TIE SHEET #2

PLOT DATE: 1/11/2017
 DRAWN BY: J. HEALD
 CHECKED BY: J. SHIELDS
 SHEET 5 OF 360